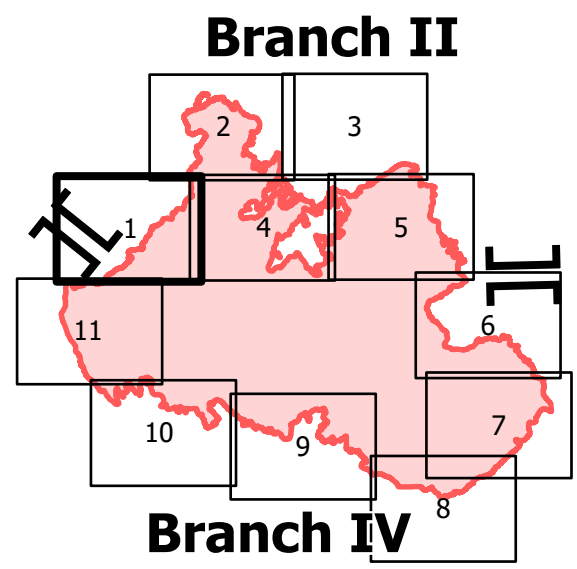
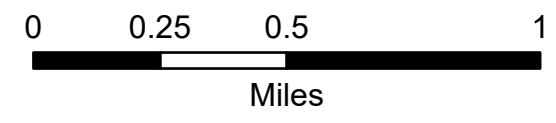


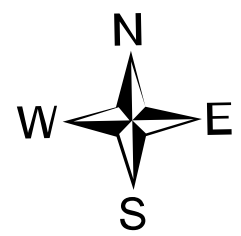
IAP

7/28/2021 24hr
Bootleg Fire
OR-FWF-210321
413,400 acres at 07/26/2021
@ 2330

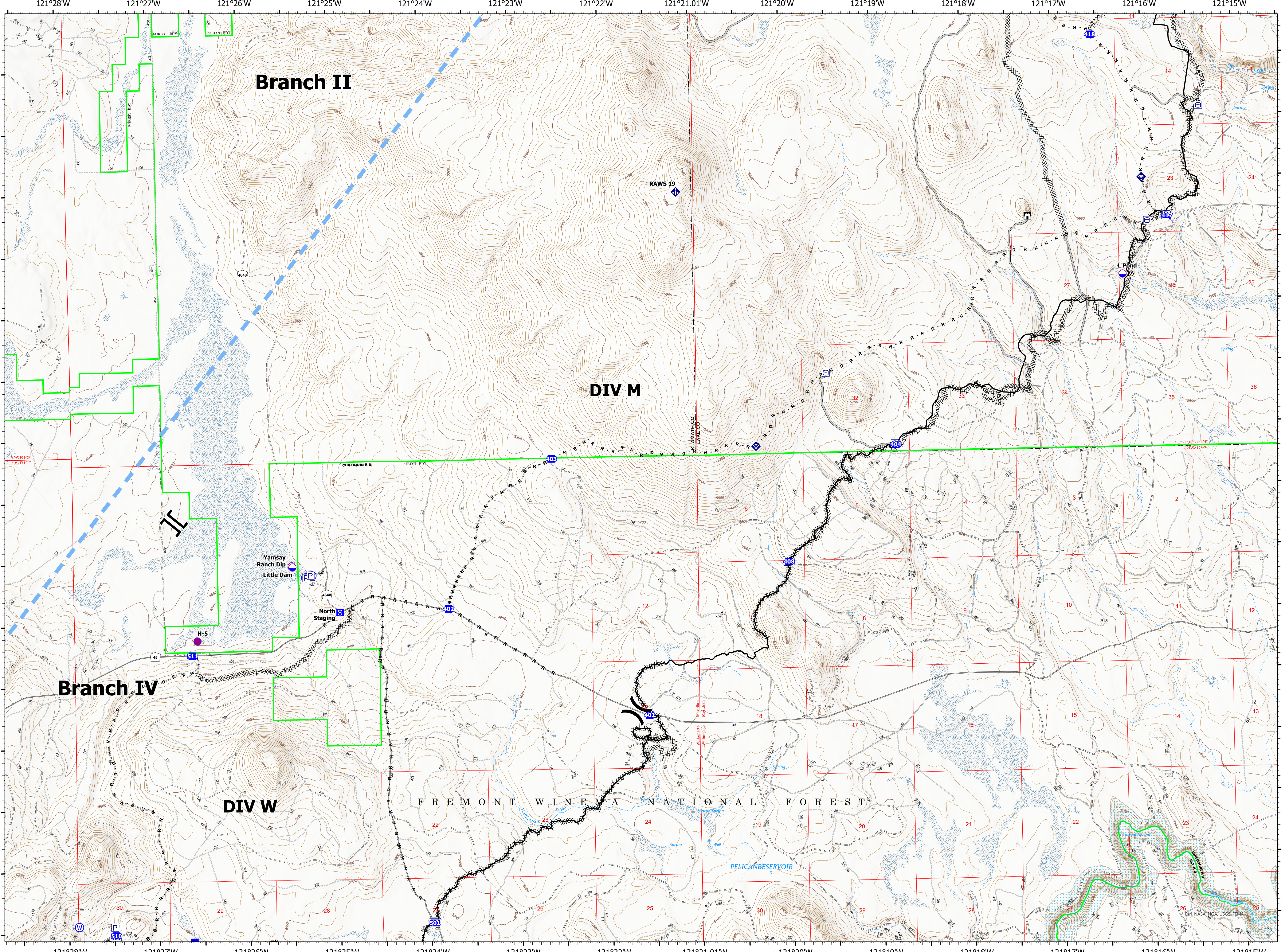


Branch IV
Page 1 of 11

- Dip Site
- Helispot
- Division Break
- Branch Break
- Drop Point
- Staging Area
- Lookout
- Mobile Weather Unit
- Internet Access
- Water Source
- Paved Road
- Gravel Road
- Unimproved Roads
- Closed Roads

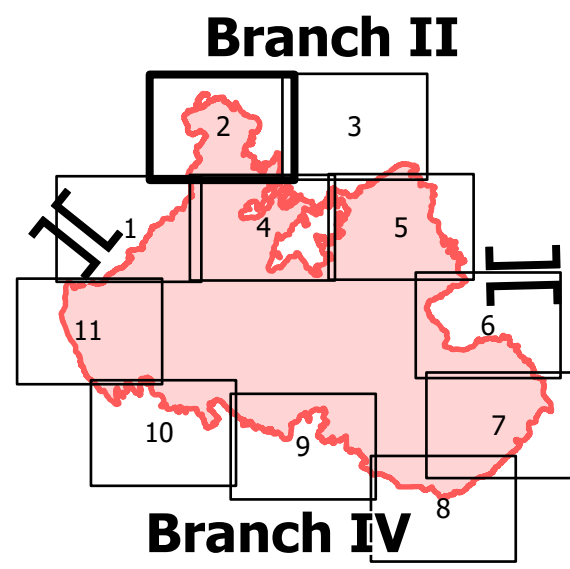
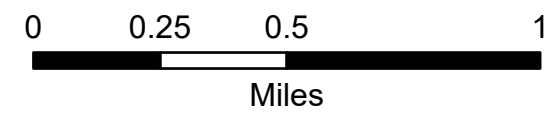


7/27/2021 2115
Acres estimate from IR
North American 1983 Datum, Lat/Long
Grid

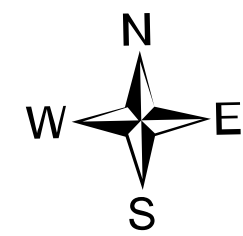


IAP

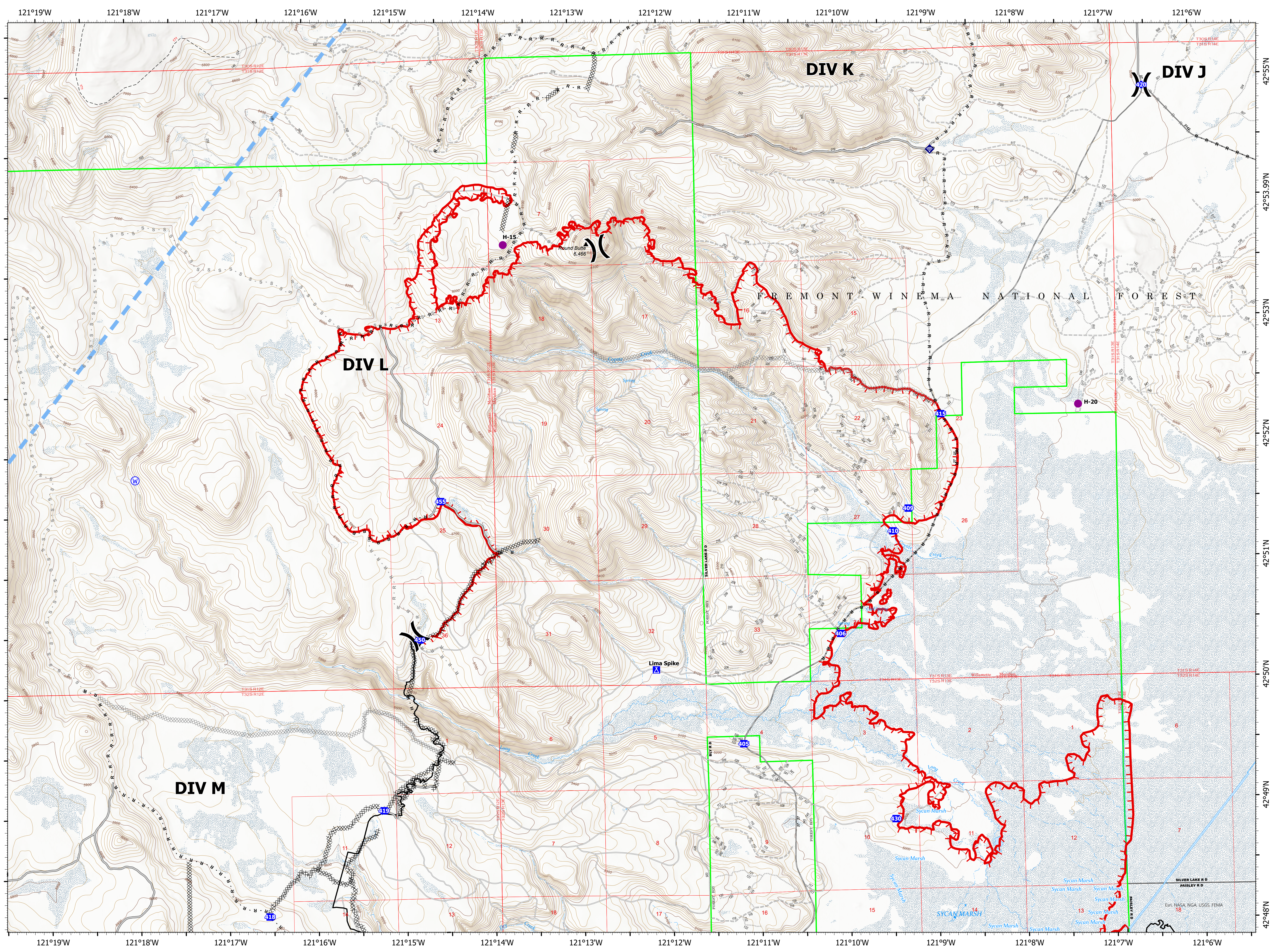
7/28/2021 24hr
Bootleg Fire
OR-FWF-210321
413,400 acres at 07/26/2021
@ 2330



- Helispot
-) Division Break
- Drop Point
- ▲ Camp
- ◆ Internet Access
- ⊙ Water Source
- Paved Road
- Gravel Road
- - - Unimproved Roads
- ⋯ Closed Roads

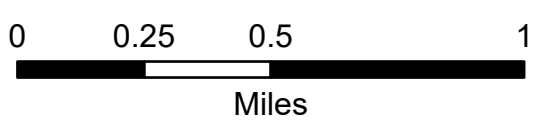


7/27/2021 2115
Acres estimate from IR
North American 1983 Datum, Lat/Long
Grid

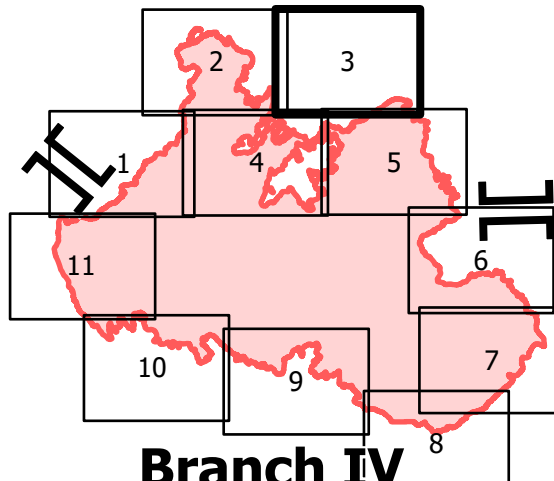


IAP

7/28/2021 24hr
Bootleg Fire
OR-FWF-210321
413,400 acres at 07/26/2021
@ 2330



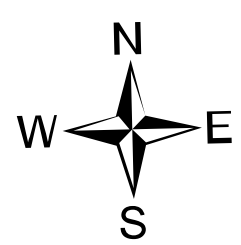
Branch II



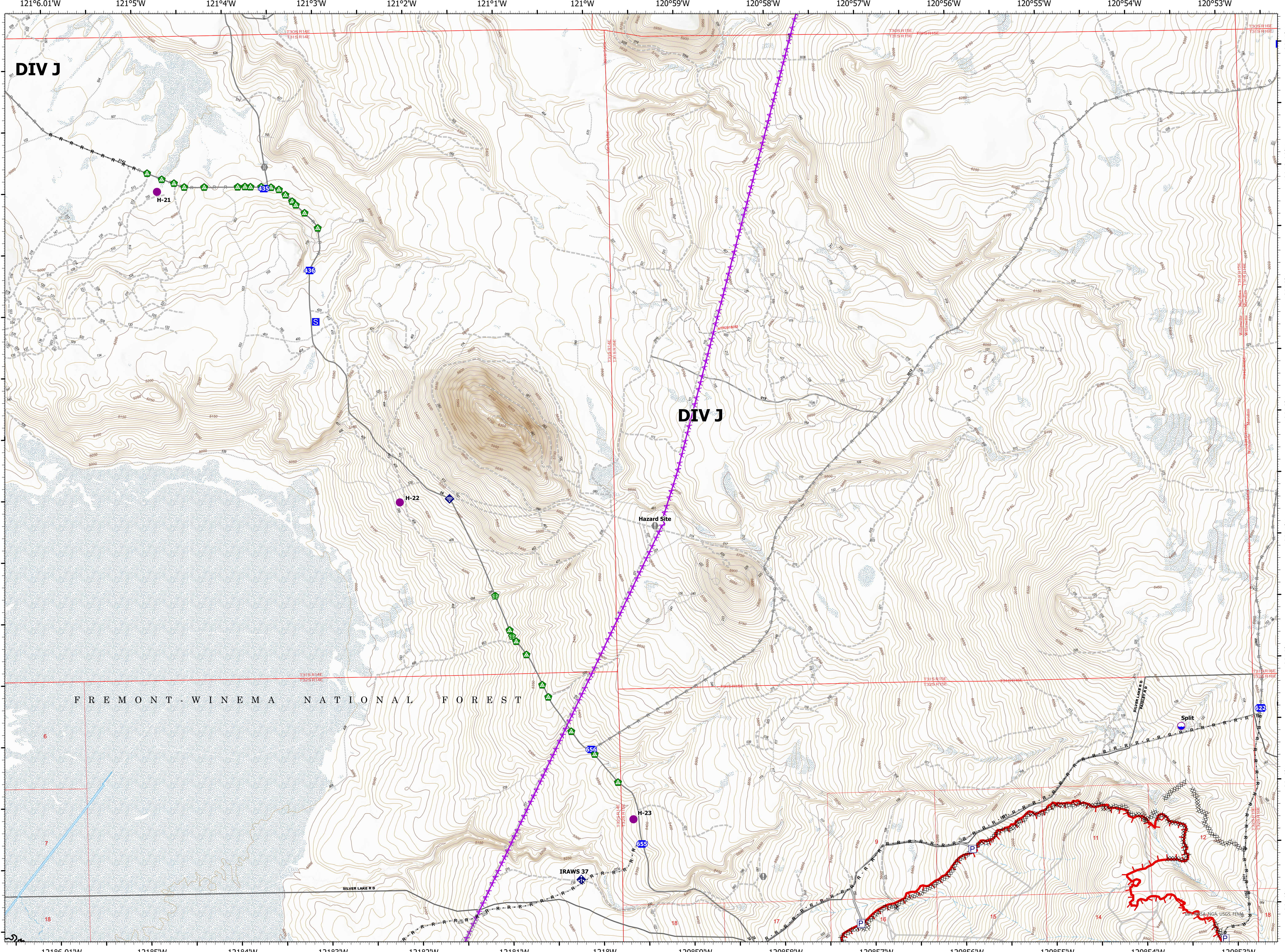
Branch IV

Page 3 of 11

- Dip Site
- Helispot
- Division Break
- Drop Point
- Staging Area
- Value at Risk
- Bridge
- Stream Crossing
- Landing or Log Deck
- Mobile Weather Unit
- Internet Access
- Paved Road
- Gravel Road
- Dirt Roads
- Unimproved Roads
- Closed Roads
- Paved Road
- Gravel Road
- Dirt Roads
- Unimproved Roads
- Closed Roads

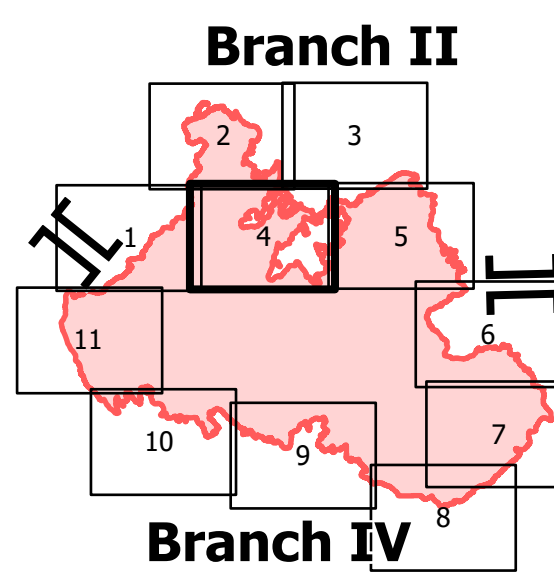
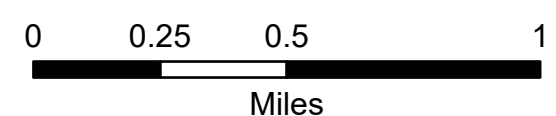


7/27/2021 2115
Acres estimate from IR
North American 1983 Datum, Lat/Long
Grid



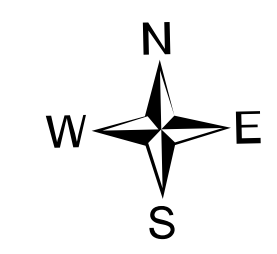
IAP

7/28/2021 24hr
Bootleg Fire
OR-FWF-210321
413,400 acres at 07/26/2021
@ 2330

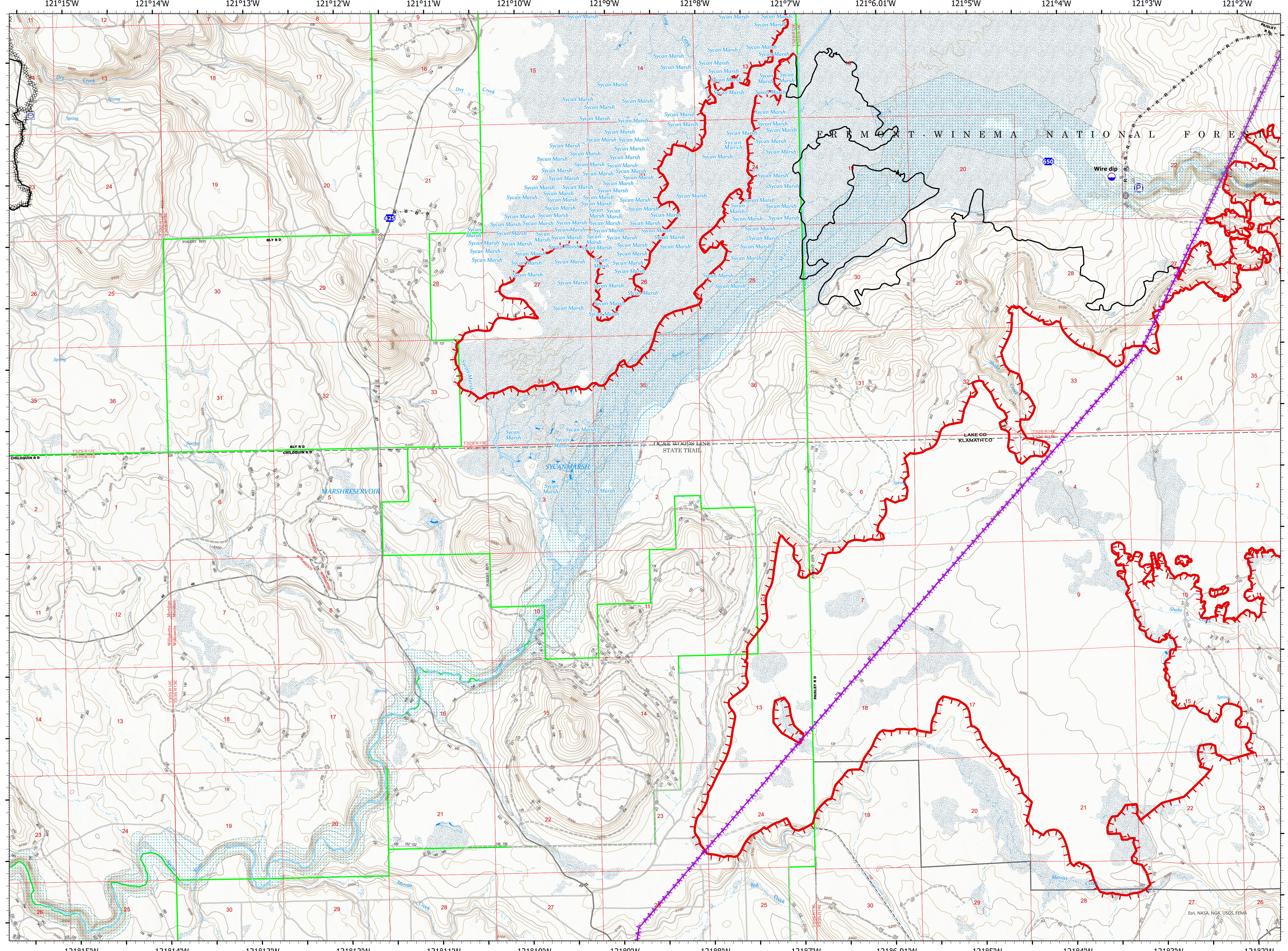


Branch IV
Page 4 of 11

- Dip Site
- Drop Point
- Bridge
- Water Source
- Paved Road
- Gravel Road
- Unimproved Roads
- Closed Roads
- Paved Road
- Gravel Road
- Unimproved Roads
- Closed Roads

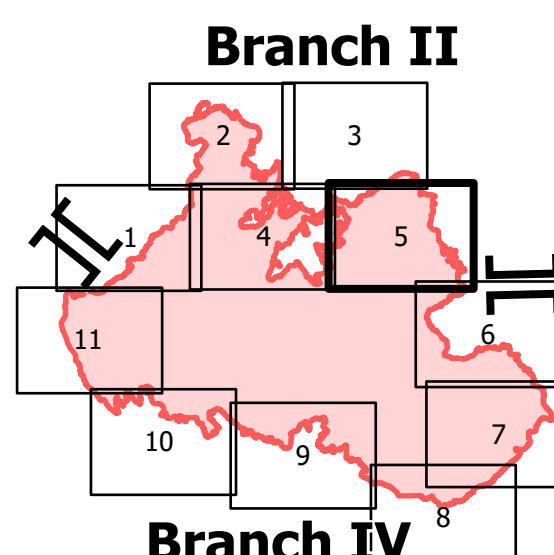
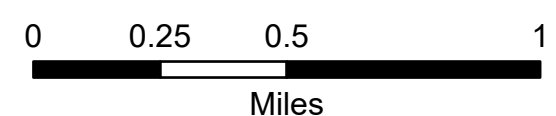


7/27/2021 2115
Acres estimate from IR
North American 1983 Datum, Lat/Long
Grid



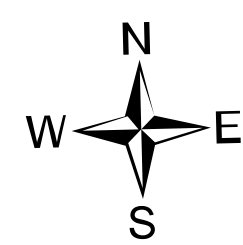
IAP

7/28/2021 24hr
Bootleg Fire
OR-FWF-210321
413,400 acres at 07/26/2021
@ 2330

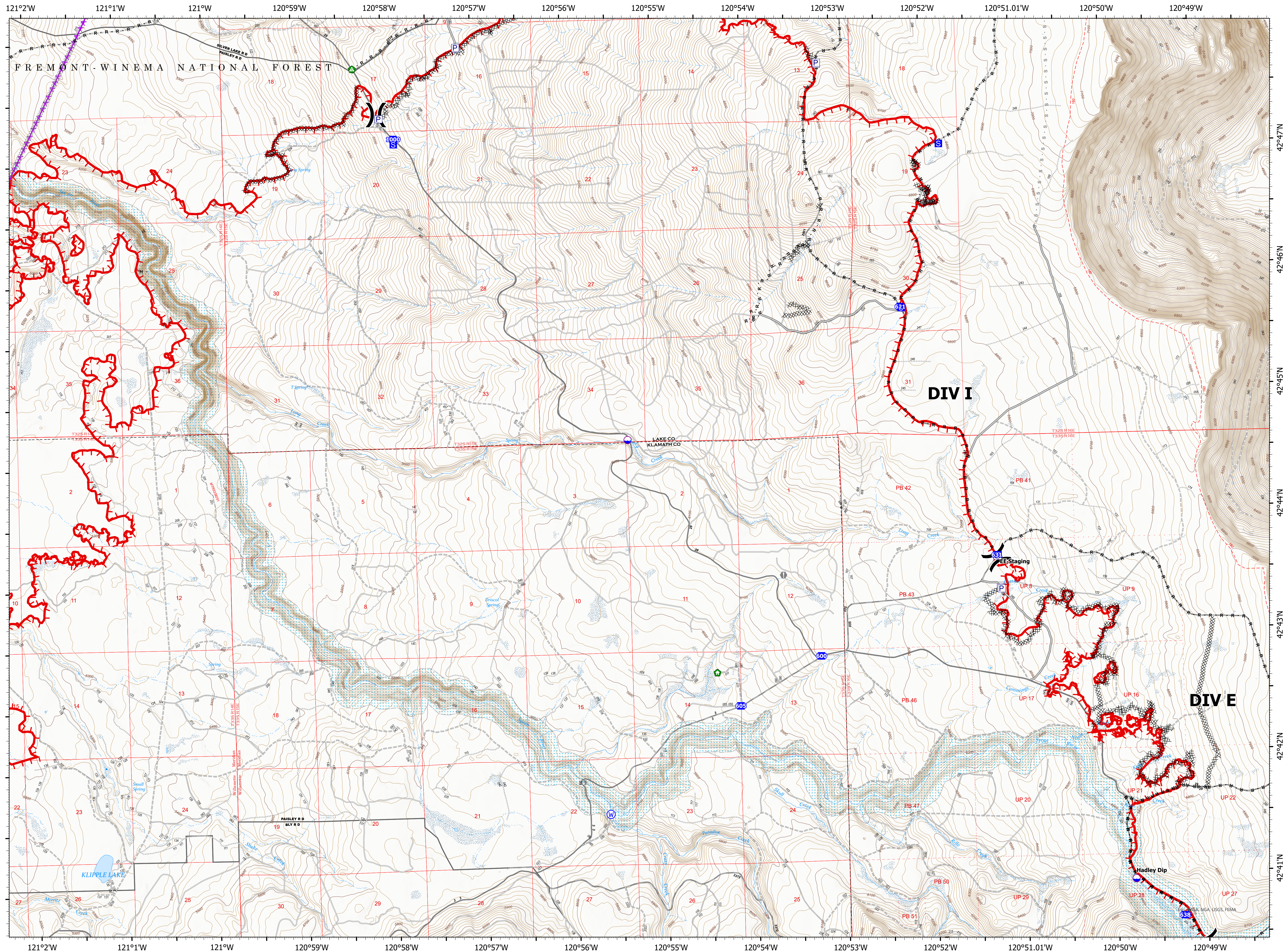


Branch IV
Page 5 of 11

- Dip Site
- Helispot
- Division Break
- Drop Point
- Staging Area
- Value at Risk
- Bridge
- Structure Wrap
- Stream Crossing
- Landing or Log Deck
- Water Source
- Paved Road
- Gravel Road
- Unimproved Roads
- Closed Roads
- Paved Road
- Gravel Road
- Unimproved Roads
- Closed Roads

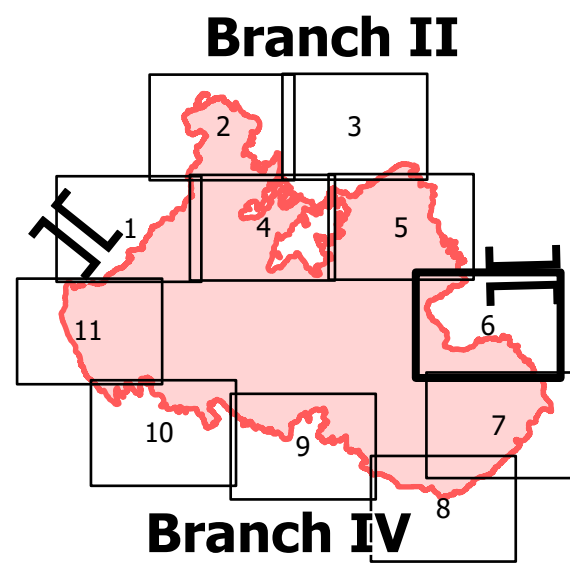
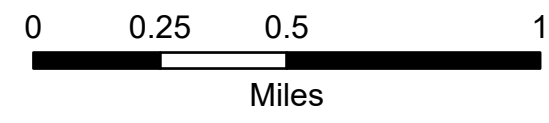


7/27/2021 2116
Acres estimate from IR
North American 1983 Datum, Lat/Long
Grid



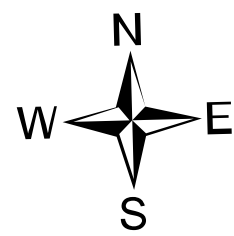
IAP

7/28/2021 24hr
Bootleg Fire
OR-FWF-210321
413,400 acres at 07/26/2021
@ 2330

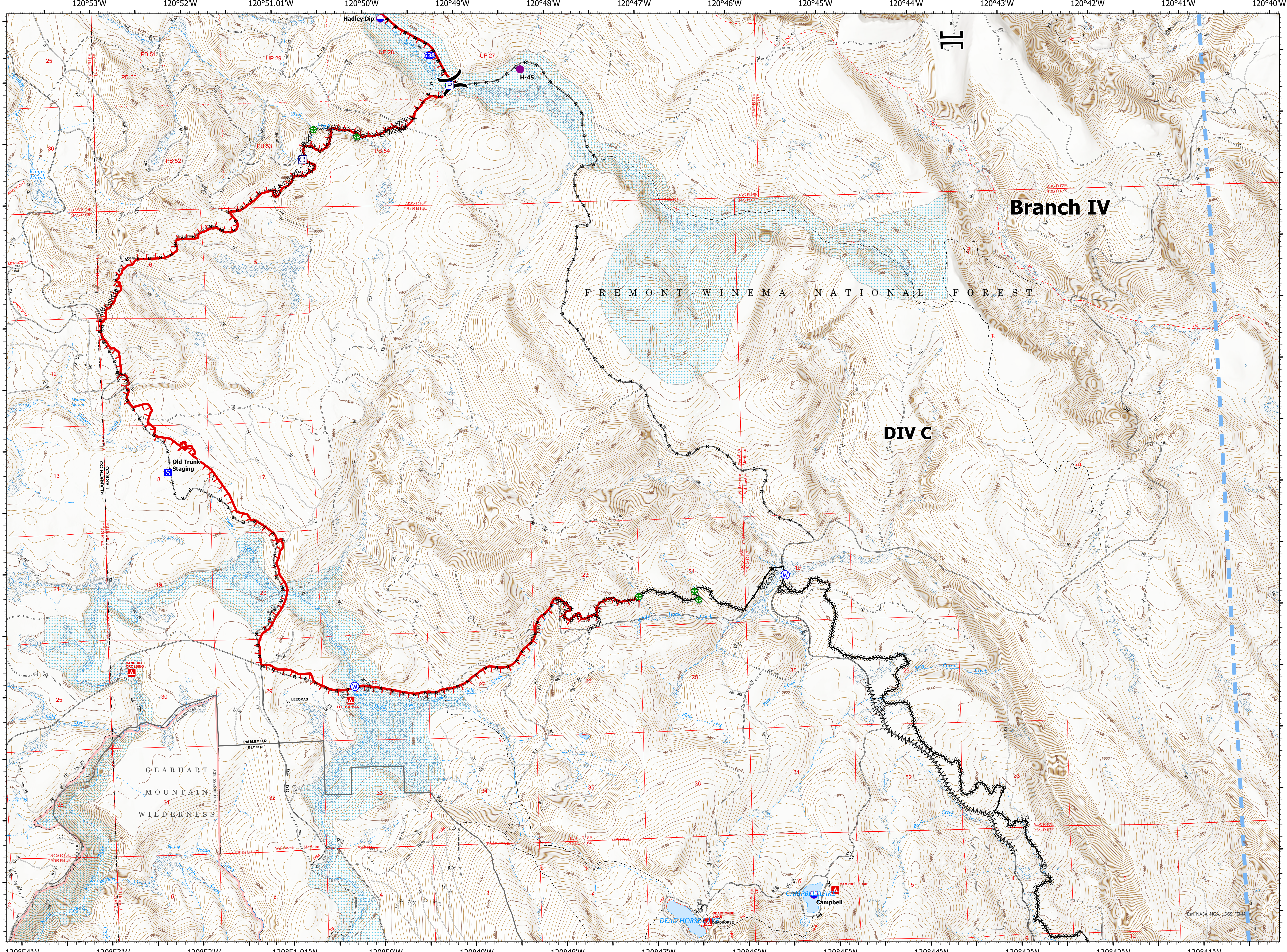


Branch IV
Page 6 of 11

- Dip Site
- Helispot
- Division Break
- Branch Break
- Drop Point
- Staging Area
- Bridge
- Stream Crossing
- Water Source
- Paved Road
- Gravel Road
- Unimproved Roads
- Closed Roads
- Paved Road
- Gravel Road
- Unimproved Roads
- Closed Roads

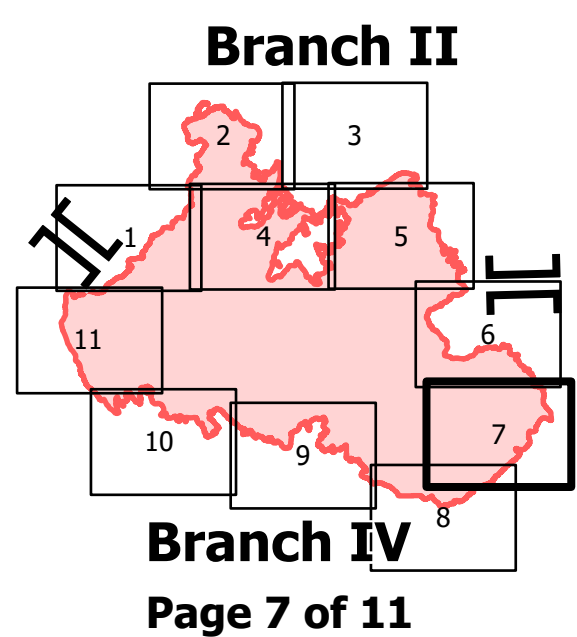
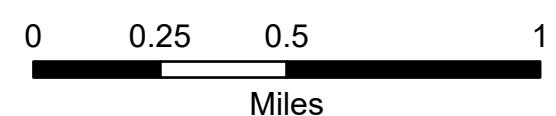


7/27/2021 2116
Acres estimate from IR
North American 1983 Datum, Lat/Long
Grid

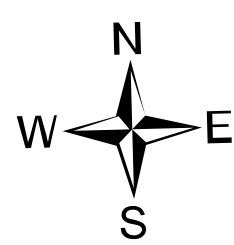


IAP

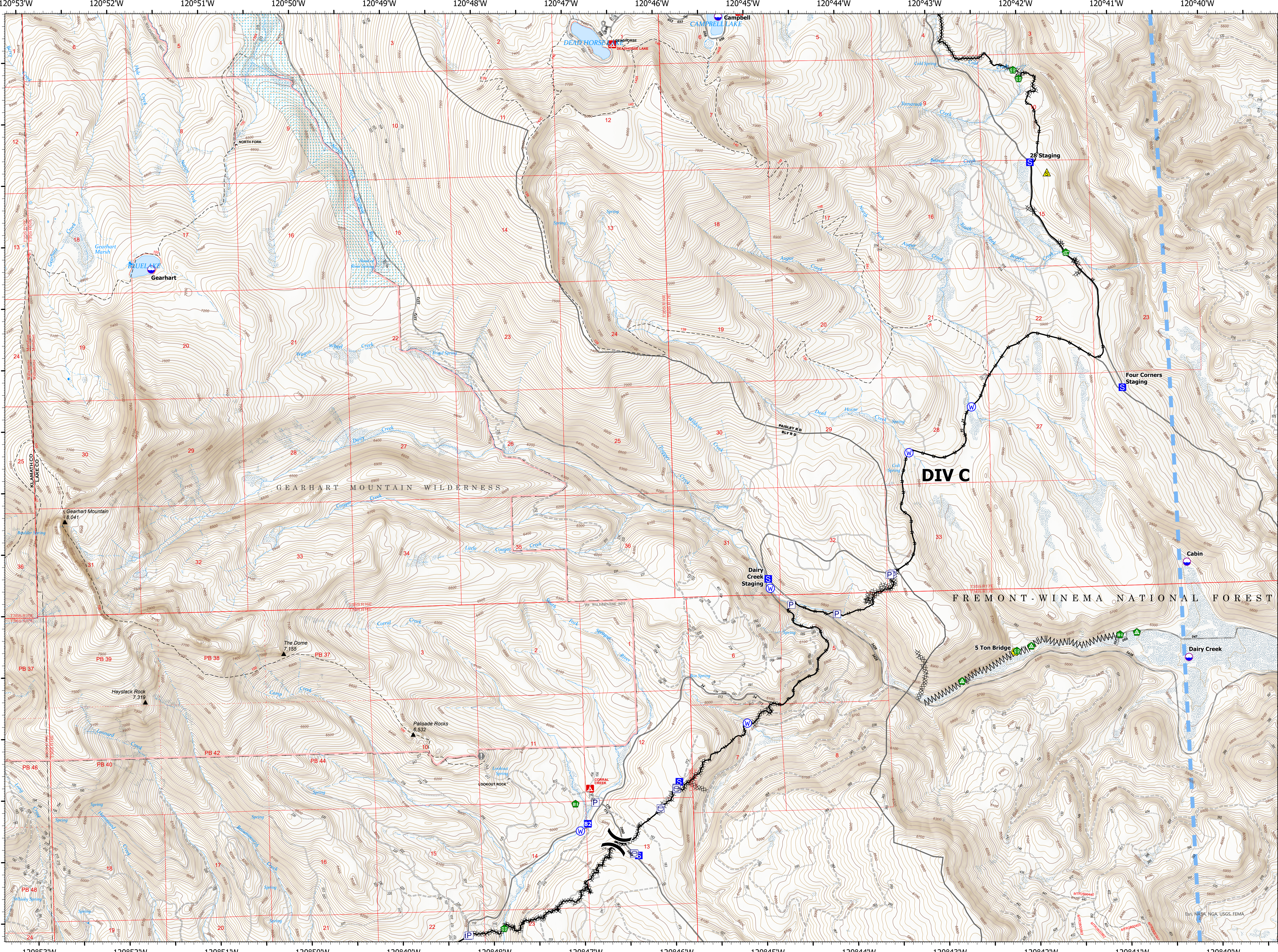
7/28/2021 24hr
Bootleg Fire
OR-FWF-210321
413,400 acres at 07/26/2021
@ 2330



- Dip Site
- Division Break
- Drop Point
- Staging Area
- Value at Risk
- Water Development or Draft Site
- Stream Crossing
- Landing or Log Deck
- Fence - Cut/Damaged
- Safety Zone
- Hazard
- Water Source
- Paved Road
- Gravel Road
- Unimproved Roads
- Closed Roads



7/27/2021 2117
Acres estimate from IR
North American 1983 Datum, Lat/Long
Grid

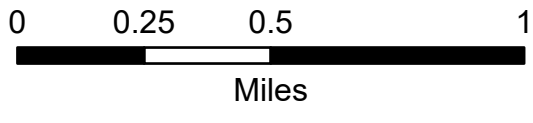


120°53'W 120°52'W 120°51'W 120°50'W 120°49'W 120°48'W 120°47'W 120°46'W 120°45'W 120°44'W 120°43'W 120°42'W 120°41'W 120°40'W

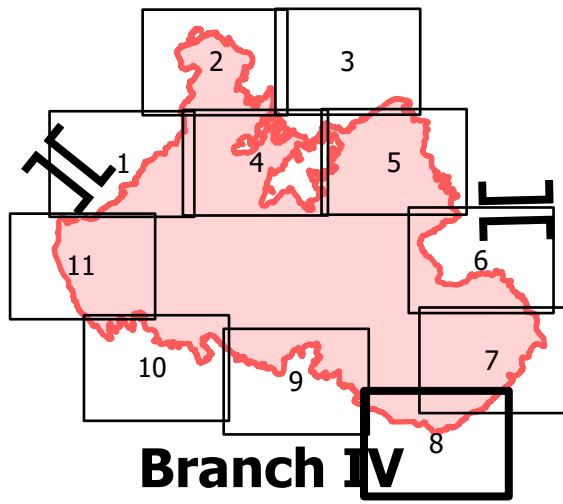
42°33'N
42°32'N
42°31'N
42°30'N
42°29'N
42°28'N
42°27'N

IAP

7/28/2021 24hr
Bootleg Fire
OR-FWF-210321
413,400 acres at 07/26/2021
@ 2330



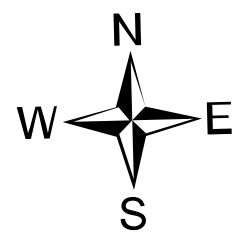
Branch II



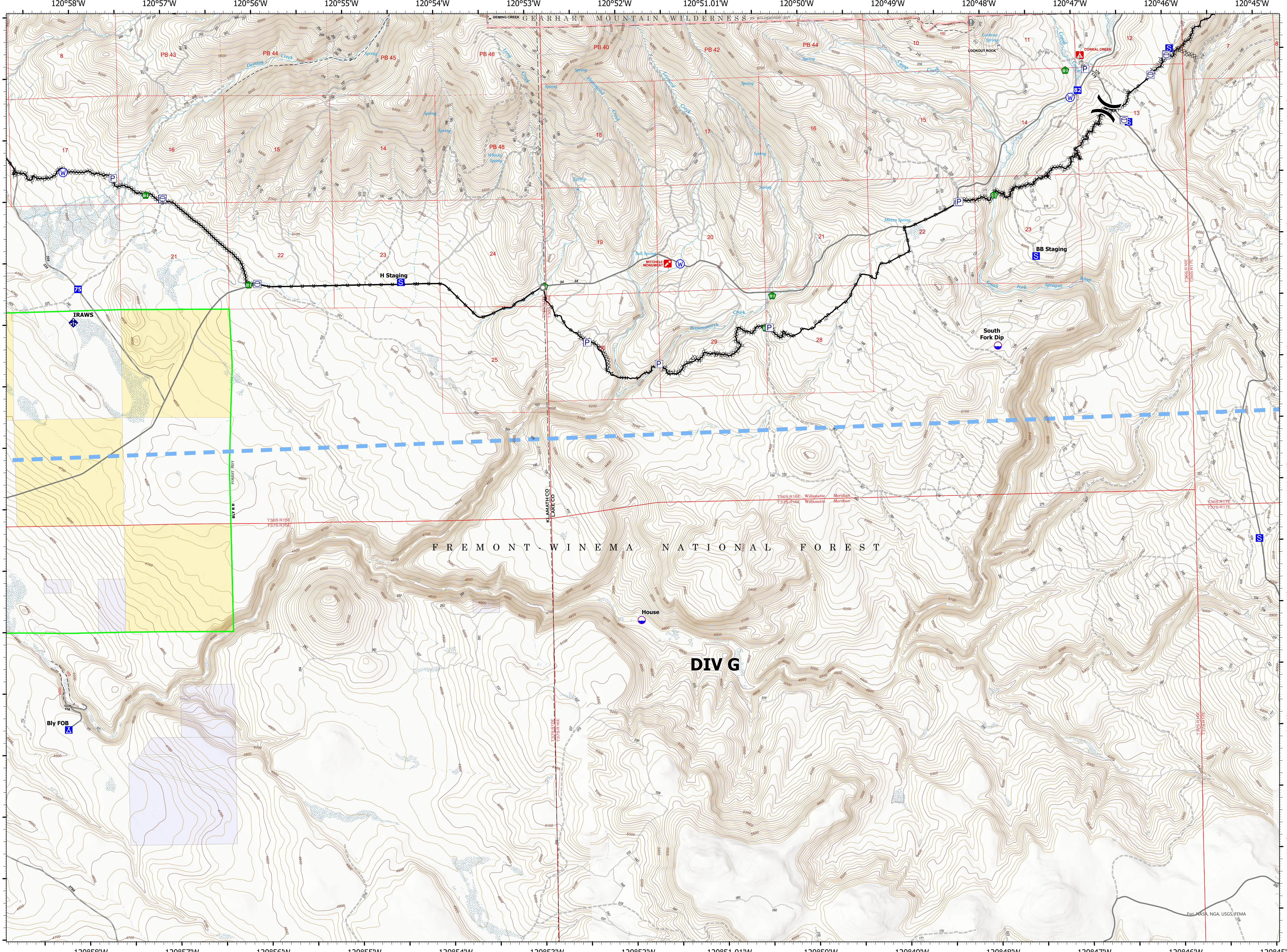
Branch IV

Page 8 of 11

- Dip Site
- Division Break
- Drop Point
- Camp
- Staging Area
- Value at Risk
- Landmark
- Water Development or Draft Site
- Stream Crossing
- Fence - Cut/Damaged
- Mobile Weather Unit
- Water Source
- Paved Road
- Gravel Road
- Unimproved Roads
- Closed Roads
- Paved Road
- Gravel Road
- Unimproved Roads
- Closed Roads

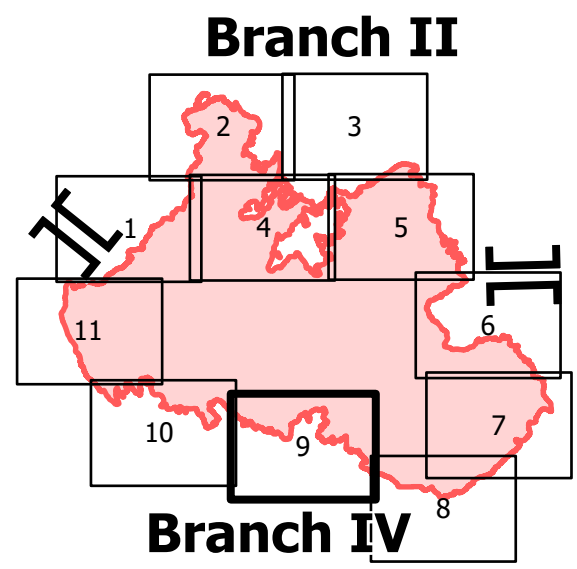
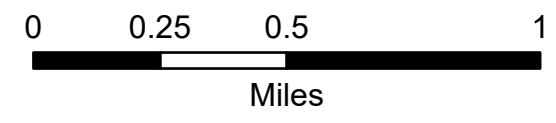


7/27/2021 2117
Acres estimate from IR
North American 1983 Datum, Lat/Long
Grid



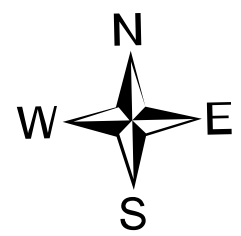
IAP

7/28/2021 24hr
Bootleg Fire
OR-FWF-210321
413,400 acres at 07/26/2021
@ 2330

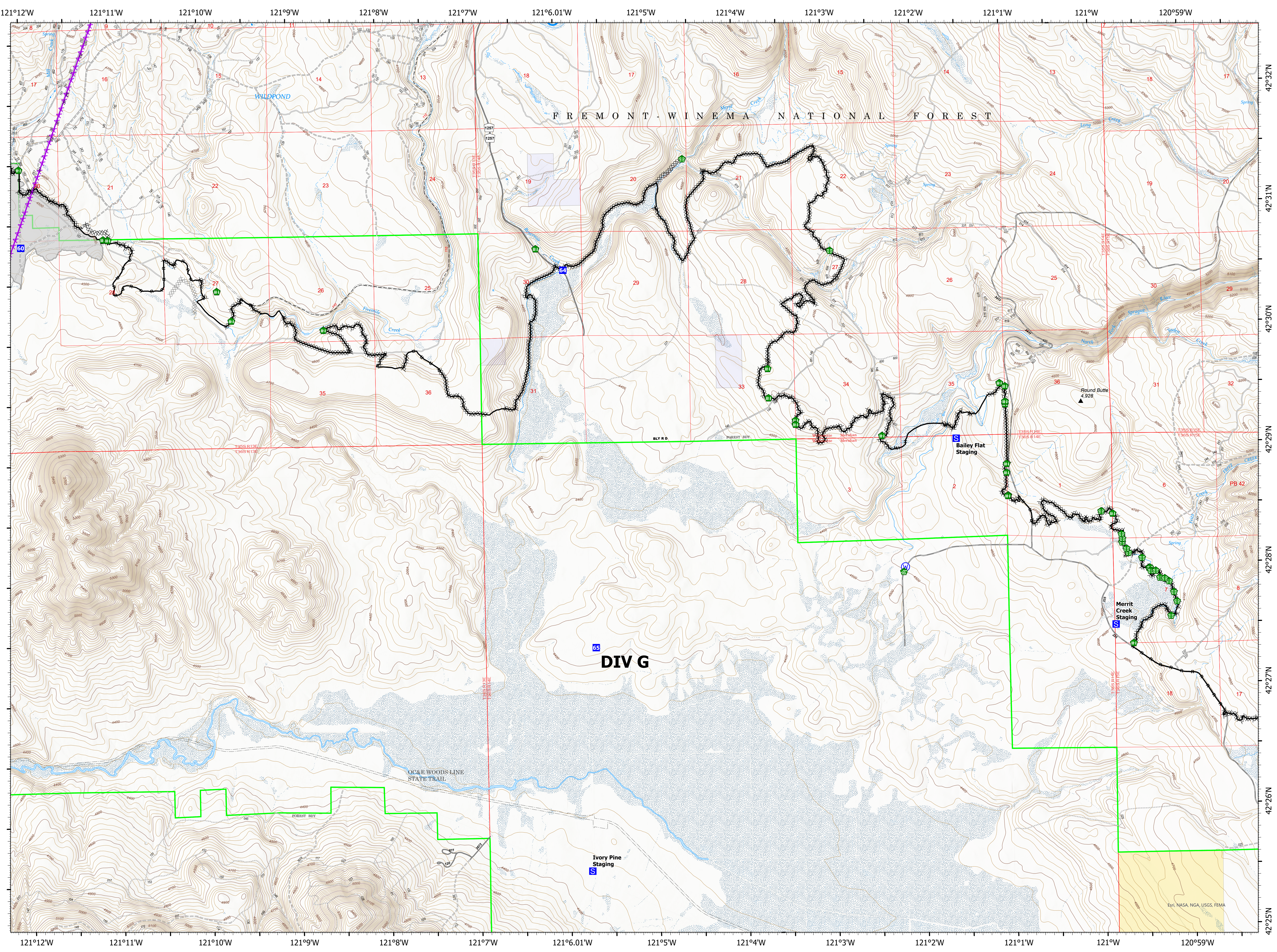


Branch IV
Page 9 of 11

- Drop Point
- Staging Area
- Water Development or Draft Site
- Stream Crossing
- Fence - Cut/Damaged
- Water Source
- Paved Road
- Gravel Road
- Unimproved Roads
- Closed Roads

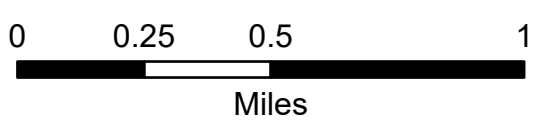


7/27/2021 2117
Acres estimate from IR
North American 1983 Datum, Lat/Long
Grid

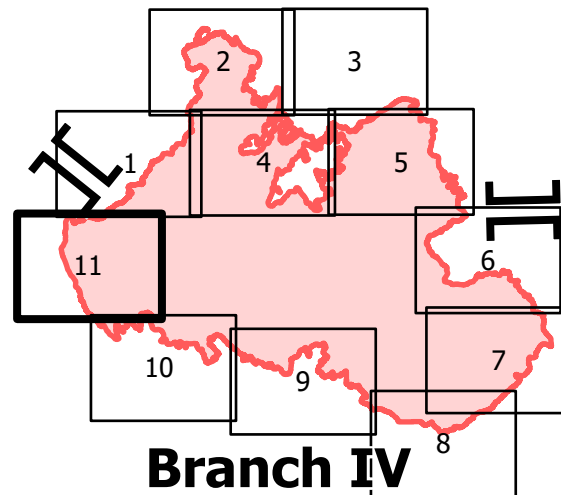


IAP

7/28/2021 24hr
Bootleg Fire
OR-FWF-210321
413,400 acres at 07/26/2021
@ 2330



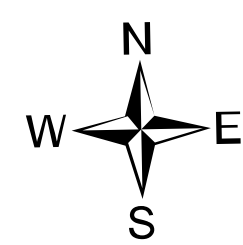
Branch II



Branch IV

Page 11 of

- Helispot
- Drop Point
- 🚚 Landing or Log Deck
- 🚧 Fence - Cut/Damaged
- 📍 Water Source
- Gravel Road
- Unimproved Roads
- Closed Roads
- Gravel Road
- Unimproved Roads
- Closed Roads



7/27/2021 2117
Acres estimate from IR
North American 1983 Datum, Lat/Long
Grid

