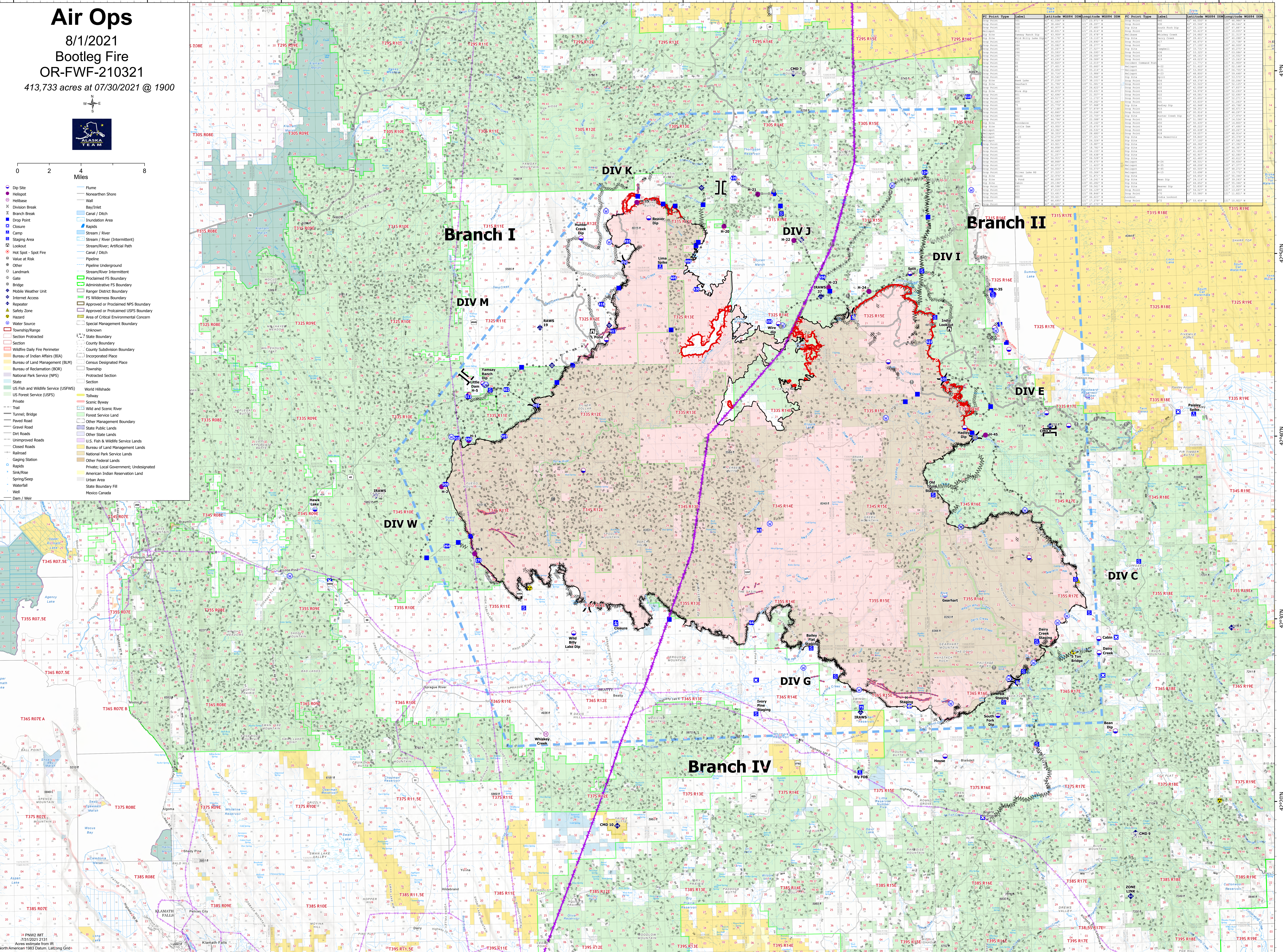


Air Ops

8/1/2021
Bootleg Fire
OR-FWF-210321
413,733 acres at 07/30/2021 @ 1900



- Dip Site
- Helispot
- Helibase
- Division Break
- Branch Break
- Drop Point
- Closure
- Camp
- Staging Area
- Lookout
- Hot Spot - Spot Fire
- Value at Risk
- Other
- Landmark
- Gate
- Bridge
- Mobile Weather Unit
- Internet Access
- Repeater
- Hazard
- Water Source
- Turntable/Ramp
- Section Protected
- Section
- Wildfire Daily Fire Perimeter
- Bureau of Indian Affairs (BIA)
- Bureau of Land Management (BLM)
- Bureau of Reclamation (BOR)
- National Park Service (NPS)
- State
- US Fish and Wildlife Service (USFWS)
- US Forest Service (USFS)
- Private
- Trail
- Tunnel; Bridge
- Paved Road
- Gravel Road
- Dirt Roads
- Unimproved Roads
- Closed Roads
- Railroad
- Gaging Station
- Rapids
- Sink/Rise
- Spring/Seep
- Waterfall
- Dam / Weir
- Flume
- Nonearthen Shore
- Wall
- Bay/Inlet
- Canal / Ditch
- Inundation Area
- Rapids
- Stream / River
- Stream / River (Intermittent)
- Stream/River, Artificial Path
- Canal / Ditch
- Pipeline
- Pipeline Underground
- Stream/River Intermittent
- Proclaimed FS Boundary
- Administrative FS Boundary
- Ranger District Boundary
- FS Wilderness Boundary
- Approved or Proclaimed NPS Boundary
- Approved or Proclaimed USFS Boundary
- Area of Critical Environmental Concern
- Special Management Boundary
- Unknown
- State Boundary
- County Boundary
- County Subdivision Boundary
- Incorporated Place
- Other State Lands
- Other Federal Lands
- U.S. Fish & Wildlife Service Lands
- Bureau of Land Management Lands
- National Park Service Lands
- Other Federal Lands
- Private; Local Government; Undesignated
- American Indian Reservation Land
- Urban Area
- State Boundary Fill
- Mexico Canada
- World Hillshade
- Tollway
- Scenic Byway
- Wild and Scenic River
- Forest Service Land
- Other Management Boundary
- State Public Lands
- Other State Lands
- U.S. Fish & Wildlife Service Lands
- Bureau of Land Management Lands
- National Park Service Lands
- Other Federal Lands
- Private; Local Government; Undesignated
- American Indian Reservation Land
- Urban Area
- State Boundary Fill
- Mexico Canada



PC Point Type	Label	Latitude	WGS84	DEM	Longitude	WGS84	DEM	PC Point Type	Label	Latitude	WGS84	DEM	Longitude	WGS84	DEM
Drop Point	101	42.14444	121.14444	5000	121.14444	5000	Drop Point	102	42.14444	121.14444	5000	121.14444	5000	5000	
Drop Point	103	42.14444	121.14444	5000	121.14444	5000	Drop Point	104	42.14444	121.14444	5000	121.14444	5000	5000	
Drop Point	105	42.14444	121.14444	5000	121.14444	5000	Drop Point	106	42.14444	121.14444	5000	121.14444	5000	5000	
Drop Point	107	42.14444	121.14444	5000	121.14444	5000	Drop Point	108	42.14444	121.14444	5000	121.14444	5000	5000	
Drop Point	109	42.14444	121.14444	5000	121.14444	5000	Drop Point	110	42.14444	121.14444	5000	121.14444	5000	5000	
Drop Point	111	42.14444	121.14444	5000	121.14444	5000	Drop Point	112	42.14444	121.14444	5000	121.14444	5000	5000	
Drop Point	113	42.14444	121.14444	5000	121.14444	5000	Drop Point	114	42.14444	121.14444	5000	121.14444	5000	5000	
Drop Point	115	42.14444	121.14444	5000	121.14444	5000	Drop Point	116	42.14444	121.14444	5000	121.14444	5000	5000	
Drop Point	117	42.14444	121.14444	5000	121.14444	5000	Drop Point	118	42.14444	121.14444	5000	121.14444	5000	5000	
Drop Point	119	42.14444	121.14444	5000	121.14444	5000	Drop Point	120	42.14444	121.14444	5000	121.14444	5000	5000	
Drop Point	121	42.14444	121.14444	5000	121.14444	5000	Drop Point	122	42.14444	121.14444	5000	121.14444	5000	5000	
Drop Point	123	42.14444	121.14444	5000	121.14444	5000	Drop Point	124	42.14444	121.14444	5000	121.14444	5000	5000	
Drop Point	125	42.14444	121.14444	5000	121.14444	5000	Drop Point	126	42.14444	121.14444	5000	121.14444	5000	5000	
Drop Point	127	42.14444	121.14444	5000	121.14444	5000	Drop Point	128	42.14444	121.14444	5000	121.14444	5000	5000	
Drop Point	129	42.14444	121.14444	5000	121.14444	5000	Drop Point	130	42.14444	121.14444	5000	121.14444	5000	5000	
Drop Point	131	42.14444	121.14444	5000	121.14444	5000	Drop Point	132	42.14444	121.14444	5000	121.14444	5000	5000	
Drop Point	133	42.14444	121.14444	5000	121.14444	5000	Drop Point	134	42.14444	121.14444	5000	121.14444	5000	5000	
Drop Point	135	42.14444	121.14444	5000	121.14444	5000	Drop Point	136	42.14444	121.14444	5000	121.14444	5000	5000	
Drop Point	137	42.14444	121.14444	5000	121.14444	5000	Drop Point	138	42.14444	121.14444	5000	121.14444	5000	5000	
Drop Point	139	42.14444	121.14444	5000	121.14444	5000	Drop Point	140	42.14444	121.14444	5000	121.14444	5000	5000	
Drop Point	141	42.14444	121.14444	5000	121.14444	5000	Drop Point	142	42.14444	121.14444	5000	121.14444	5000	5000	
Drop Point	143	42.14444	121.14444	5000	121.14444	5000	Drop Point	144	42.14444	121.14444	5000	121.14444	5000	5000	
Drop Point	145	42.14444	121.14444	5000	121.14444	5000	Drop Point	146	42.14444	121.14444	5000	121.14444	5000	5000	
Drop Point	147	42.14444	121.14444	5000	121.14444	5000	Drop Point	148	42.14444	121.14444	5000	121.14444	5000	5000	
Drop Point	149	42.14444	121.14444	5000	121.14444	5000	Drop Point	150	42.14444	121.14444	5000	121.14444	5000	5000	
Drop Point	151	42.14444	121.14444	5000	121.14444	5000	Drop Point	152	42.14444	121.14444	5000	121.14444	5000	5000	
Drop Point	153	42.14444	121.14444	5000	121.14444	5000	Drop Point	154	42.14444	121.14444	5000	121.14444	5000	5000	
Drop Point	155	42.14444	121.14444	5000	121.14444	5000	Drop Point	156	42.14444	121.14444	5000	121.14444	5000	5000	
Drop Point	157	42.14444	121.14444	5000	121.14444	5000	Drop Point	158	42.14444	121.14444	5000	121.14444	5000	5000	
Drop Point	159	42.14444	121.14444	5000	121.14444	5000	Drop Point	160	42.14444	121.14444	5000	121.14444	5000	5000	
Drop Point	161	42.14444	121.14444	5000	121.14444	5000	Drop Point	162	42.14444	121.14444	5000	121.14444	5000	5000	
Drop Point	163	42.14444	121.14444	5000	121.14444	5000	Drop Point	164	42.14444	121.14444	5000	121.14444	5000	5000	
Drop Point	165	42.14444	121.14444	5000	121.14444	5000	Drop Point	166	42.14444	121.14444	5000	121.14444	5000	5000	
Drop Point	167	42.14444	121.14444	5000	121.14444	5000	Drop Point	168	42.14444	121.14444	5000	121.14444	5000	5000	
Drop Point	169	42.14444	121.14444	5000	121.14444	5000	Drop Point	170	42.14444	121.14444	5000	121.14444	5000	5000	
Drop Point	171	42.14444	121.14444	5000	121.14444	5000	Drop Point	172	42.14444	121.14444	5000	121.14444	5000	5000	
Drop Point	173	42.14444	121.14444	5000	121.14444	5000	Drop Point	174	42.14444	121.14444	5000	121.14444	5000	5000	
Drop Point	175	42.14444	121.14444	5000	121.14444	5000	Drop Point	176	42.14444	121.14444	5000	121.14444	5000	5000	
Drop Point	177	42.14444	121.14444	5000	121.14444	5000	Drop Point	178	42.14444	121.14444	5000	121.14444	5000	5000	
Drop Point	179	42.14444	121.14444	5000	121.14444	5000	Drop Point	180	42.14444	121.14444	5000	121.14444	5000	5000	
Drop Point	181	42.14444	121.14444	5000	121.14444	5000	Drop Point	182	42.14444	121.14444	5000	121.14444	5000	5000	
Drop Point	183	42.14444	121.14444	5000	121.14444	5000	Drop Point	184	42.14444	121.14444	5000	121.14444	5000	5000	
Drop Point	185	42.14444	121.14444	5000	121.14444	5000	Drop Point	186	42.14444	121.14444	5000	121.14444	5000	5000	
Drop Point	187	42.14444	121.14444	5000	121.14444	5000	Drop Point	188	42.14444	121.14444	5000	121.14444	5000	5000	
Drop Point	189	42.14444	121.14444	5000	121.14444	5000	Drop Point	190	42.14444	121.14444	5000	121.14444	5000	5000	
Drop Point	191	42.14444	121.14444	5000	121.14444	5000	Drop Point	192	42.14444	121.14444	5000	121.14444	5000	5000	
Drop Point	193	42.14444	121.14444	5000	121.14444	5000	Drop Point	194	42.14444	121.14444	5000	121.14444	5000	5000	
Drop Point	195	42.14444	121.14444	5000	121.14444	5000	Drop Point	196	42.14444	121.14444	5000	121.14444	5000	5000	
Drop Point	197	42.14444	121.14444	5000	121.14444	5000	Drop Point	198	42.14444	121.14444	5000	121.14444	5000	5000	
Drop Point	199	42.14444	121.14444	5000	121.14444	5000	Drop Point	200	42.14444	121.14444	5000	121.14444	5000	5000	