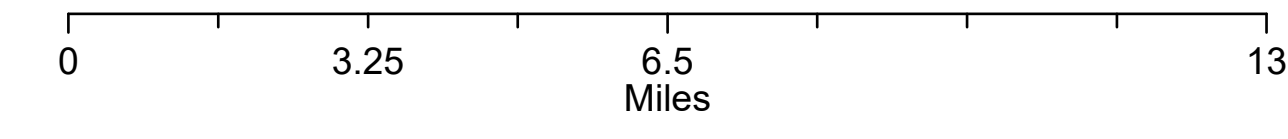
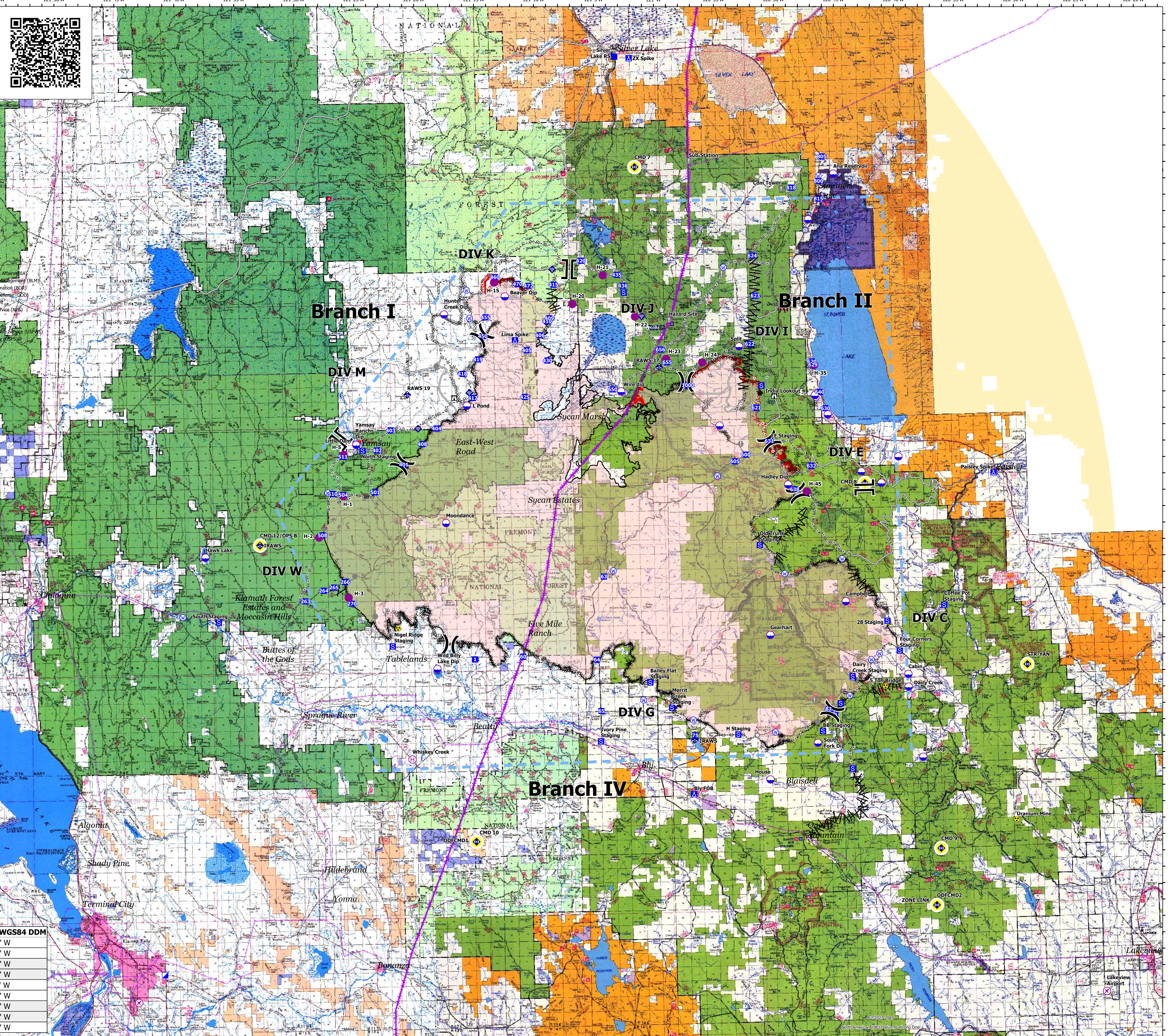


Communications

8/2/2021
 Bootleg Fire
 OR-FWF-210321
 413,762 acres at 08/01/2021 @ 0335



- Airstrip or Airport
- Dip Site
- Helibase
- Helibase
- X Division Break
- || Branch Break
- Incident Command Post
- Drop Point
- Camp
- Staging Area
- Lookout
- Hot Spot - Spot Fire
- Value at Risk
- Other
- Landmark
- Gate
- Bridge
- Mobile Weather Unit
- Internet Access
- Repeater
- Safety Zone
- Hazard
- Water Source
- Completed Dozer Line
- Completed Fuel Break
- Completed Hand Line
- Completed Mixed Construction Line
- Completed Plow Line
- Planned Dozer Line
- Planned Fuel Break
- Planned Hand Line
- Planned Mixed Construction Line
- Planned Road as Line
- Planned Secondary Line
- Access or Improved Road
- Other
- Repair Line
- Aerial Hazard
- Temporary Flight Restriction
- Fire Edge
- Contained Line
- Wildfire Daily Fire Perimeter
- Transmission Lines
- Zone Break
- FVM_WIN_S.tif
- RGB
- FVM_WIN_N.tif
- RGB
- Red: Band_1
- Green: Band_2
- Blue: Band_3
- FVM_FRE_N.tif
- RGB
- Red: Band_1
- Green: Band_2
- Blue: Band_3
- FVM_FRE_S.tif
- RGB
- SMA
- GRP
- Bureau of Indian Affairs (BIA)
- Bureau of Land Management (BLM)
- Bureau of Reclamation (BOR)
- Department of Agriculture (USDA)
- Local Government
- National Park Service (NPS)
- Other Federal
- State
- US Fish and Wildlife Service (USFWS)
- US Forest Service (USFS)
- Private
- Undetermined



FC Point Type	Label	Latitude WGS84 DDM	Longitude WGS84 DDM
Repeater	CMD 10	42° 19.581' N	121° 16.175' W
Repeater	CMD 12/OPS B	42° 37.907' N	121° 33.568' W
Repeater	CMD 7	43° 00.553' N	121° 01.900' W
Repeater	CMD 8	42° 40.916' N	120° 43.449' W
Repeater	CMD 9	42° 18.513' N	120° 37.970' W
Repeater	ODFCMD1	42° 19.581' N	121° 16.175' W
Repeater	ODFCMD2	42° 15.050' N	120° 38.455' W
Repeater	STR-YAN	42° 29.596' N	120° 30.450' W
Repeater	ZONE LINK	42° 15.050' N	120° 38.455' W