

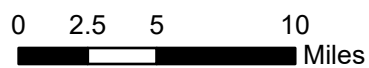
# Repeaters

8/8/2021  
 Bootleg Fire  
 OR-FWF-210321

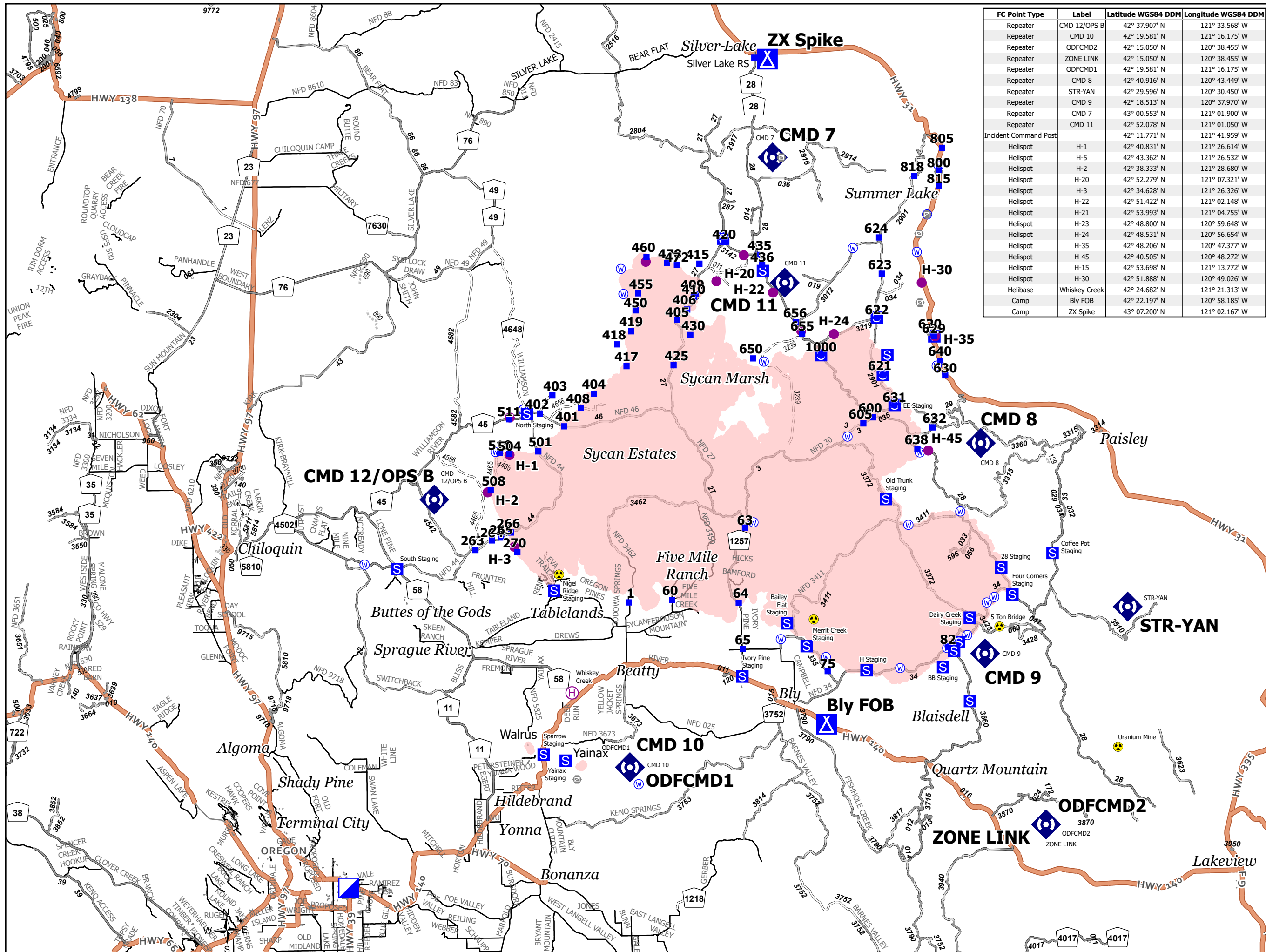
413,765 acres  
 at 08/03/2021 @ 0220



- Camp
- Drop Point
- Gate
- Hazard
- Helibase
- Helispot
- Incident Command Post
- Repeater
- Staging Area
- Water Source
- Road
- Wildfire Perimeter



PNW2 IMT  
 8/7/2021 2313  
 Acres estimate from IR  
 North American 1983 Datum. LatLong Grid



FC Point Type	Label	Latitude WGS84 DDM	Longitude WGS84 DDM
Repeater	CMD 12/OPS B	42° 37.907' N	121° 33.568' W
Repeater	CMD 10	42° 19.581' N	121° 16.175' W
Repeater	ODFCMD2	42° 15.050' N	120° 38.455' W
Repeater	ZONE LINK	42° 15.050' N	120° 38.455' W
Repeater	ODFCMD1	42° 19.581' N	121° 16.175' W
Repeater	CMD 8	42° 40.916' N	120° 43.449' W
Repeater	STR-YAN	42° 29.596' N	120° 30.450' W
Repeater	CMD 9	42° 18.513' N	120° 37.970' W
Repeater	CMD 7	43° 00.553' N	121° 01.900' W
Repeater	CMD 11	42° 52.078' N	121° 01.050' W
Incident Command Post	H-1	42° 11.771' N	121° 41.959' W
Helispot	H-1	42° 40.831' N	121° 26.614' W
Helispot	H-5	42° 43.362' N	121° 26.532' W
Helispot	H-2	42° 38.333' N	121° 28.680' W
Helispot	H-20	42° 52.279' N	121° 07.321' W
Helispot	H-3	42° 34.628' N	121° 26.326' W
Helispot	H-22	42° 51.422' N	121° 02.148' W
Helispot	H-21	42° 53.993' N	121° 04.755' W
Helispot	H-23	42° 48.800' N	120° 59.648' W
Helispot	H-24	42° 48.531' N	120° 56.654' W
Helispot	H-35	42° 48.206' N	120° 47.377' W
Helispot	H-45	42° 40.505' N	120° 48.272' W
Helispot	H-15	42° 53.698' N	121° 13.772' W
Helispot	H-30	42° 51.888' N	120° 49.026' W
Helibase	Whiskey Creek	42° 24.682' N	121° 21.313' W
Camp	Bly FOB	42° 22.197' N	120° 58.185' W
Camp	ZX Spike	43° 07.200' N	121° 02.167' W