

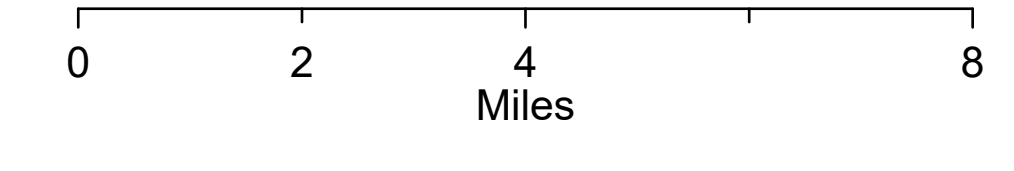
Air Ops

8/8/2021

Bootleg Fire

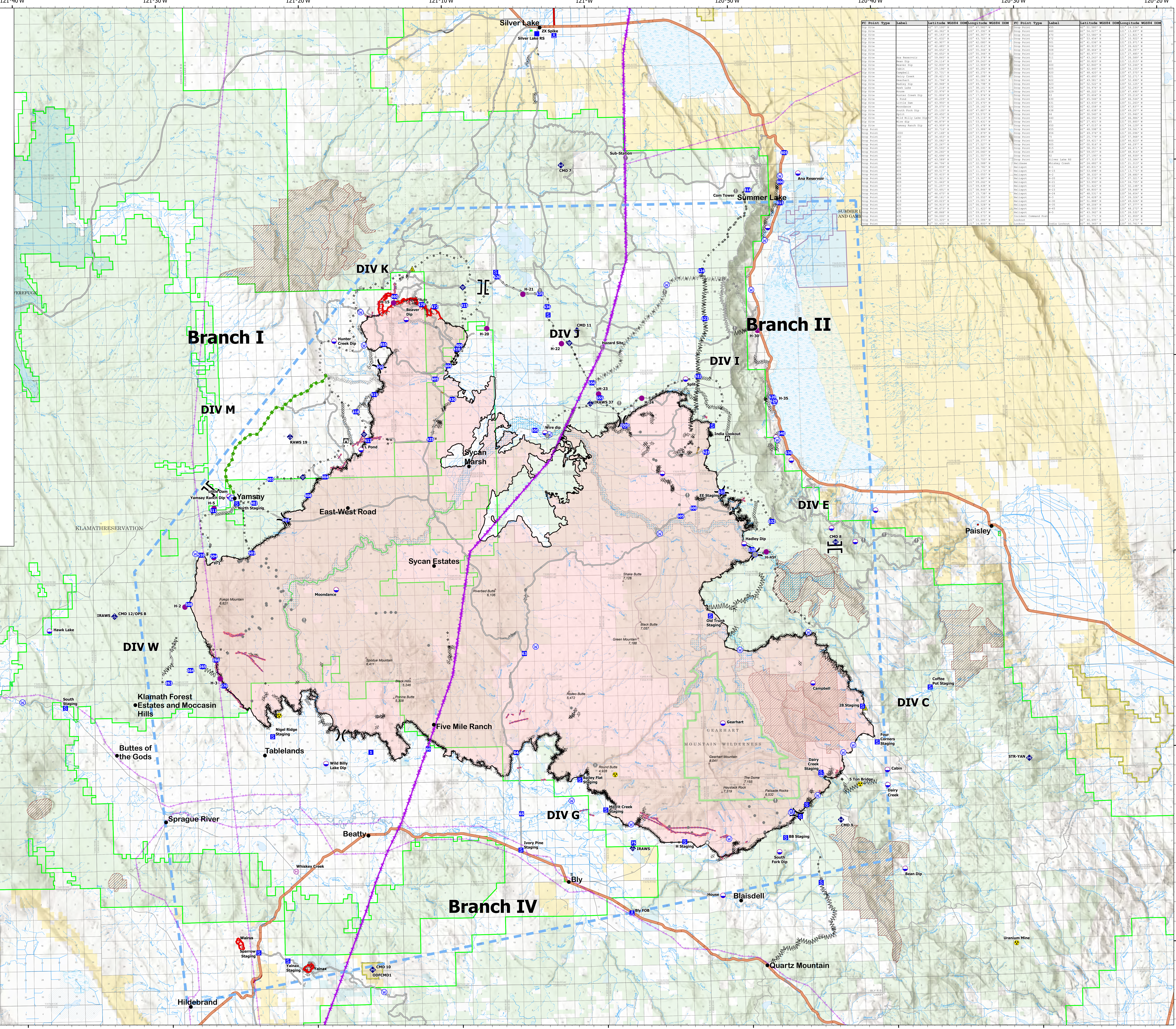
OR-FWF-210321

413,765 acres at 08/03/2021 @ 0220



PC Point Type	Label	Latitude	WGS84	Longitude	WGS84	DCR	PC Point Type	Label	Latitude	WGS84	Longitude	WGS84	DCR
Drop Point	1	42.30197	N	120.54101	W	0	Drop Point	100	42.30197	N	120.54101	W	0
Drop Point	2	42.30197	N	120.54101	W	0	Drop Point	101	42.30197	N	120.54101	W	0

- Populated Places
- Helipad
- Dip Site
- Helibase
- Assignment Breaks
- Logistics
- Operations
- Reference
- Communications
- Safety
- Water
- Ops Completed
- Ops Planned



Shady Pine
OFFICE OF Klamath NATIONAL
WILDLIFE REFUGES

PNW2 IMT
8/7/2021 2:11
Aces estimate from IR
North American 1983 Datum, Lat, Long Grid