

Pilot Map

8/8/2021

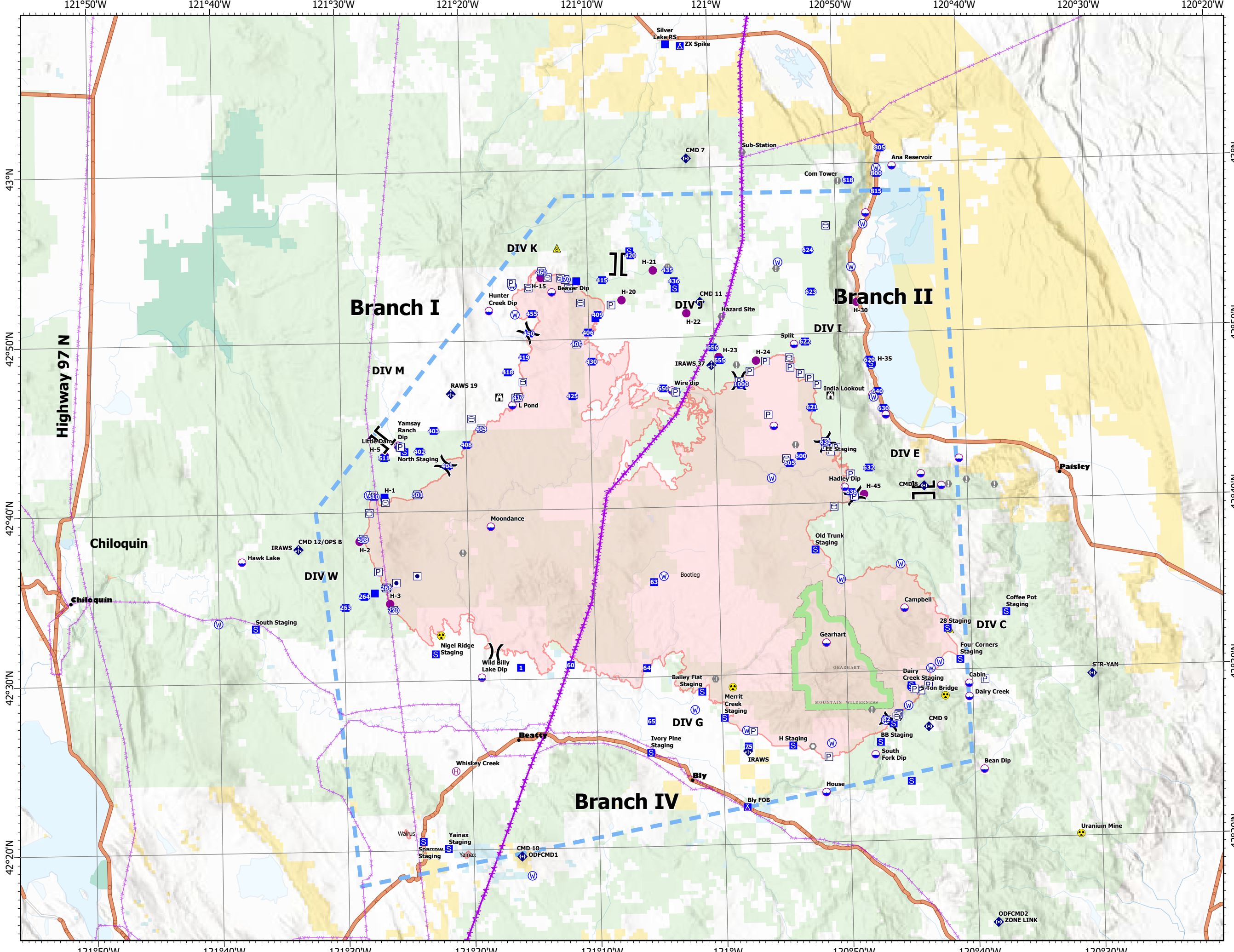
Bootleg Fire

OR-FWF-210321

413,765 acres at 08/03/2021 @ 0220



- Dip Site
- Helispot
- Helibase
- Division Break
- Branch Break
- Drop Point
- Camp
- Staging Area
- Lookout
- Value at Risk
- Landmark
- Bridge
- Mobile Weather Unit
- Repeater
- Safety Zone
- Hazard
- Water Source
- Transmission Lines
- Aerial Hazard
- TFR 1/5613 10500 MSL
- Wildfire Daily Fire Perimeter
- Bureau of Indian Affairs (BIA)
- Bureau of Land Management (BLM)
- State
- US Fish and Wildlife Service (USFWS)
- US Forest Service (USFS)
- Private
- HWY
- Populated Places
- FS Wilderness Boundary



Pilot Map

Bootleg Fire
OR-FWF-210321
8/8/2021

413,765 acres at 08/03/2021 @ 0220

FC Point Type	Label	Latitude WGS84 DDM	Longitude WGS84 DDM
Dip Site		42° 57.100' N	120° 47.582' W
Dip Site		42° 46.362' N	120° 47.392' W
Dip Site		42° 45.163' N	120° 46.367' W
Dip Site		42° 41.632' N	120° 43.705' W
Dip Site		42° 40.907' N	120° 42.080' W
Dip Site		42° 42.485' N	120° 40.612' W
Dip Site		42° 44.652' N	120° 55.346' W
Dip Site		42° 44.652' N	120° 55.346' W
Dip Site	Ana Reservoir	42° 59.845' N	120° 45.378' W
Dip Site	Bean Dip	42° 24.114' N	120° 39.243' W
Dip Site	Beaver Dip	42° 52.830' N	121° 12.909' W
Dip Site	Cabin	42° 29.196' N	120° 40.282' W
Dip Site	Campbell	42° 33.731' N	120° 45.275' W
Dip Site	Dairy Creek	42° 28.421' N	120° 40.288' W
Dip Site	Gearhart	42° 31.794' N	120° 51.581' W
Dip Site	Hadley Dip	42° 40.948' N	120° 49.798' W
Dip Site	Hawk Lake	42° 37.218' N	121° 38.101' W
Dip Site	House	42° 22.976' N	120° 51.871' W
Dip Site	Hunter Creek Dip	42° 51.804' N	121° 17.974' W
Dip Site	L Pond	42° 46.209' N	121° 16.241' W
Dip Site	Little Dam	42° 43.950' N	121° 25.470' W
Dip Site	Moondance	42° 39.075' N	121° 18.162' W
Dip Site	South Fork Dip	42° 25.135' N	120° 47.887' W
Dip Site	Split	42° 49.450' N	120° 53.570' W
Dip Site	Wild Billy Lake Dip	42° 30.178' N	121° 19.110' W
Dip Site	Wire dip	42° 46.879' N	121° 03.431' W
Dip Site	Yamsay Ranch Dip	42° 43.959' N	121° 25.478' W
Drop Point	1	42° 30.716' N	121° 15.986' W
Drop Point	1000	42° 47.168' N	120° 57.879' W
Drop Point	263	42° 34.453' N	121° 29.890' W
Drop Point	264	42° 35.082' N	121° 28.377' W
Drop Point	265	42° 35.267' N	121° 27.527' W
Drop Point	266	42° 35.593' N	121° 26.595' W
Drop Point	270	42° 34.260' N	121° 26.060' W
Drop Point	401	42° 42.696' N	121° 21.557' W
Drop Point	402	42° 43.589' N	121° 23.755' W
Drop Point	403	42° 44.794' N	121° 22.588' W
Drop Point	404	42° 44.858' N	121° 18.782' W
Drop Point	405	42° 49.517' N	121° 11.173' W
Drop Point	406	42° 50.415' N	121° 10.055' W
Drop Point	408	42° 43.921' N	121° 19.987' W
Drop Point	409	42° 51.443' N	121° 09.262' W
Drop Point	410	42° 51.257' N	121° 09.438' W
Drop Point	415	42° 53.491' N	121° 08.846' W
Drop Point	417	42° 46.675' N	121° 15.738' W
Drop Point	418	42° 48.161' N	121° 16.552' W
Drop Point	419	42° 49.023' N	121° 15.243' W
Drop Point	420	42° 54.915' N	121° 06.528' W
Drop Point	425	42° 46.673' N	121° 11.423' W
Drop Point	430	42° 48.868' N	121° 09.475' W
Drop Point	435	42° 54.000' N	121° 03.573' W
Drop Point	436	42° 53.325' N	121° 03.086' W
Drop Point	450	42° 50.435' N	121° 14.800' W
Drop Point	455	42° 51.580' N	121° 14.534' W
Drop Point	460	42° 54.027' N	121° 13.697' W
Drop Point	470	42° 53.580' N	121° 11.821' W
Drop Point	472	42° 53.454' N	121° 10.922' W
Drop Point	501	42° 41.036' N	121° 23.971' W
Drop Point	504	42° 40.915' N	121° 26.622' W
Drop Point	508	42° 38.464' N	121° 28.397' W
Drop Point	510	42° 40.977' N	121° 27.485' W
Drop Point	511	42° 43.243' N	121° 26.589' W
Drop Point	60	42° 30.820' N	121° 12.015' W
Drop Point	600	42° 42.840' N	120° 53.244' W
Drop Point	605	42° 42.445' N	120° 54.155' W
Drop Point	620	42° 48.420' N	120° 47.570' W
Drop Point	621	42° 45.693' N	120° 52.271' W
Drop Point	622	42° 49.581' N	120° 52.690' W
Drop Point	623	42° 52.522' N	120° 52.125' W
Drop Point	624	42° 54.976' N	120° 52.293' W
Drop Point	629	42° 48.222' N	120° 47.490' W
Drop Point	63	42° 35.604' N	121° 05.214' W
Drop Point	630	42° 45.546' N	120° 46.544' W
Drop Point	631	42° 43.633' N	120° 51.263' W
Drop Point	632	42° 42.058' N	120° 47.837' W
Drop Point	638	42° 40.638' N	120° 49.267' W
Drop Point	64	42° 30.540' N	121° 05.940' W
Drop Point	640	42° 46.550' N	120° 46.986' W
Drop Point	65	42° 27.401' N	121° 05.660' W
Drop Point	650	42° 47.015' N	121° 04.129' W
Drop Point	655	42° 48.598' N	120° 59.561' W
Drop Point	656	42° 49.376' N	121° 00.096' W
Drop Point	75	42° 25.779' N	120° 57.968' W
Drop Point	800	42° 59.421' N	120° 46.623' W
Drop Point	805	43° 00.916' N	120° 46.297' W
Drop Point	815	42° 58.351' N	120° 46.671' W
Drop Point	818	42° 59.057' N	120° 48.914' W
Drop Point	82	42° 27.195' N	120° 46.939' W
Drop Point	Silver Lake RS	43° 07.315' N	121° 03.364' W
Helibase	Whiskey Creek	42° 24.682' N	121° 21.313' W
Helispot	H-1	42° 40.831' N	121° 26.614' W
Helispot	H-15	42° 53.698' N	121° 13.772' W
Helispot	H-2	42° 38.333' N	121° 28.680' W
Helispot	H-20	42° 52.279' N	121° 07.321' W
Helispot	H-21	42° 53.993' N	121° 04.755' W
Helispot	H-22	42° 51.422' N	121° 02.148' W
Helispot	H-23	42° 48.800' N	120° 59.648' W
Helispot	H-24	42° 48.531' N	120° 56.654' W
Helispot	H-3	42° 34.628' N	121° 26.326' W
Helispot	H-30	42° 51.888' N	120° 49.026' W
Helispot	H-35	42° 48.206' N	120° 47.377' W
Helispot	H-45	42° 40.505' N	120° 48.272' W
Helispot	H-5	42° 43.362' N	121° 26.532' W
Incident Command Post		42° 11.771' N	121° 41.959' W
Lookout		42° 46.695' N	121° 17.279' W
Lookout	India Lookout	42° 46.365' N	120° 50.761' W