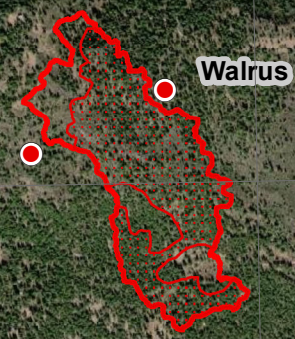


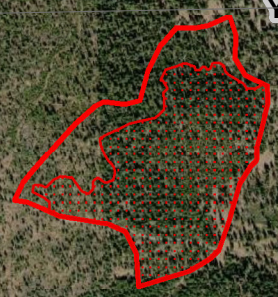
121°26'0"W 121°25'0"W 121°24'0"W 121°23'0"W 121°22'0"W 121°21'0"W 121°20'0"W

42°22'0"N
42°21'0"N
42°20'0"N
42°19'0"N







Bootleg
 OR-FWF-210321
Infrared Map - NIROPS
 Infrared Map for 8/08/2021
 Imagery Acquired: 8/08/2021 @ 0027 PDT
 IRIN: Trisha Boll (t)/Jen Frazer
 Interpreted Acres:
 Walrus: 75 acres (+ 0)
 Yainax: 88 acres (+ 0)
 UTM Zone 10N NAD83



Walrus



Yainax

-  IR Isolated Heat
-  Area Covered by IR Flight
-  Cloud Cover
-  IR Heat Perimeter
-  IR Intense Heat
-  IR Scattered Heat



Source: Esri, Maxar, GeoEye, Earthstar Geographics, CNES/Airbus DS, USDA, USGS, AeroGRID, IGN, and the GIS User Community

121°26'0"W 121°25'0"W 121°24'0"W 121°23'0"W 121°22'0"W 121°21'0"W 121°20'0"W

42°21'0"N
42°20'0"N
42°19'0"N