

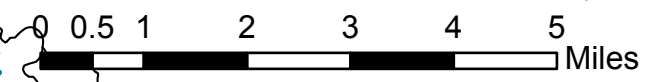
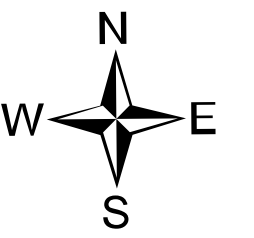
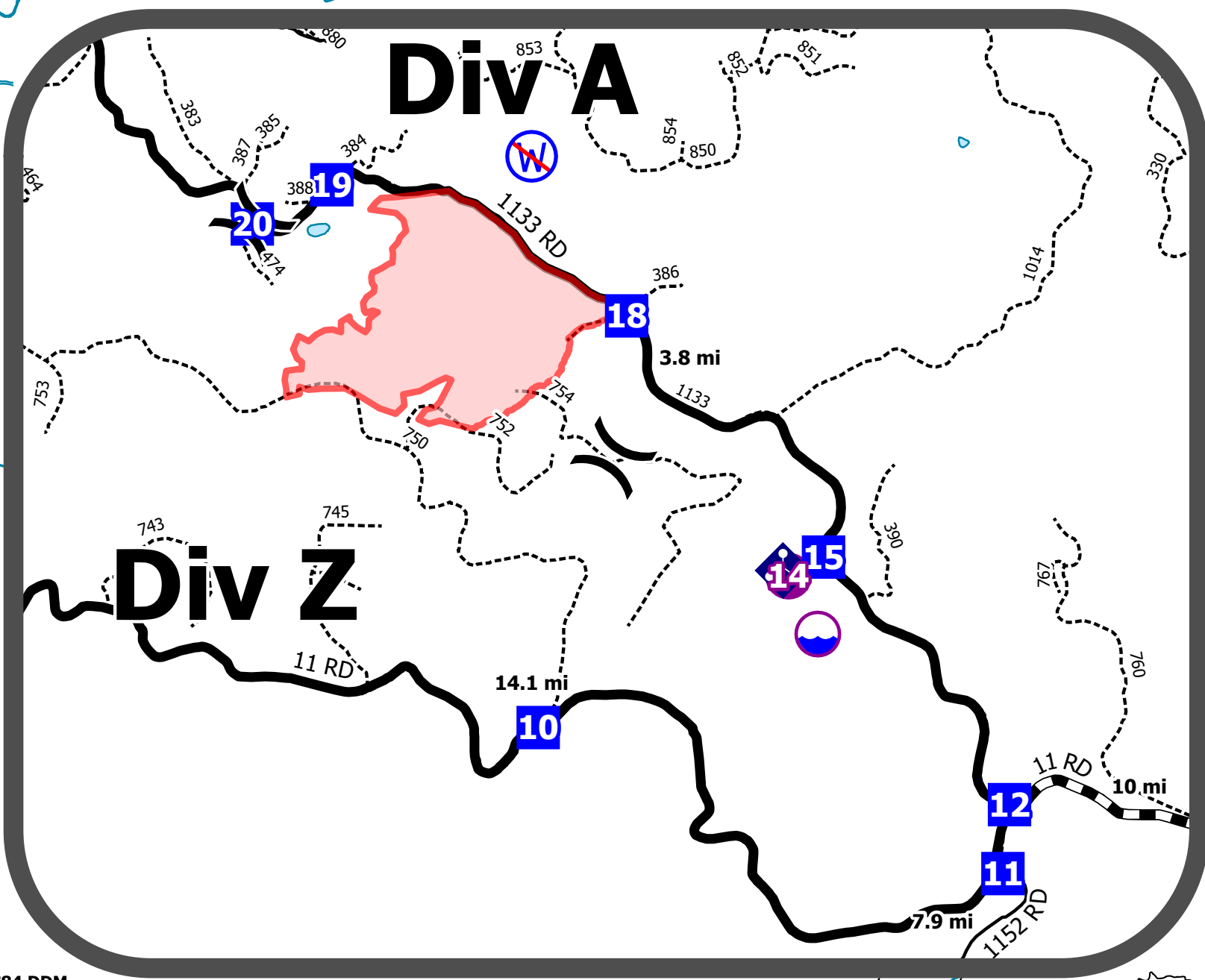
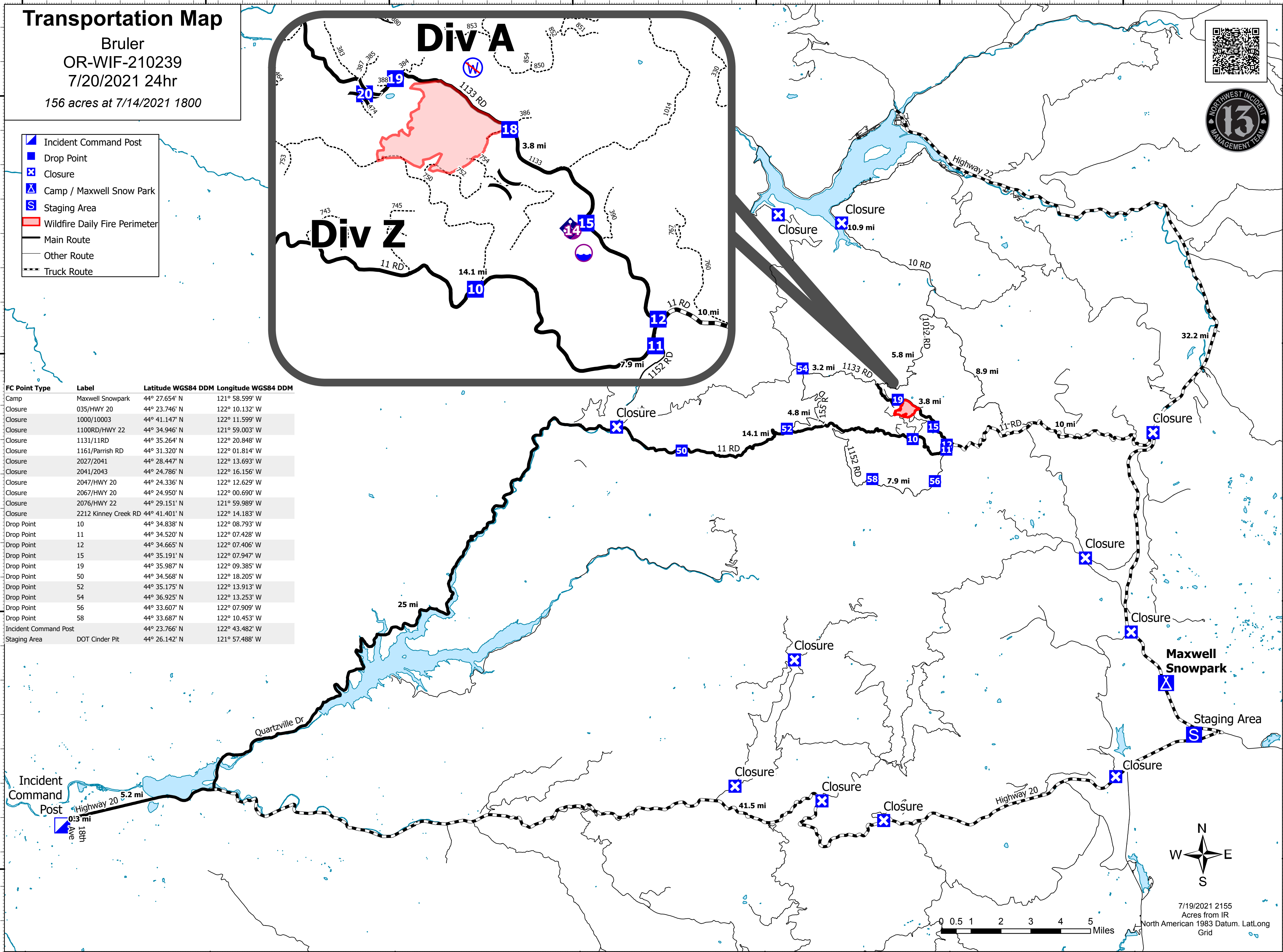
Transportation Map

Bruler
 OR-WIF-210239
 7/20/2021 24hr
 156 acres at 7/14/2021 1800



- Incident Command Post
- Drop Point
- Closure
- Camp / Maxwell Snow Park
- Staging Area
- Wildfire Daily Fire Perimeter
- Main Route
- Other Route
- Truck Route

FC Point Type	Label	Latitude WGS84 DDM	Longitude WGS84 DDM
Camp	Maxwell Snowpark	44° 27.654' N	121° 58.599' W
Closure	035/HWY 20	44° 23.746' N	122° 10.132' W
Closure	1000/10003	44° 41.147' N	122° 11.599' W
Closure	1100RD/HWY 22	44° 34.946' N	121° 59.003' W
Closure	1131/11RD	44° 35.264' N	122° 20.848' W
Closure	1161/Parrish RD	44° 31.320' N	122° 01.814' W
Closure	2027/2041	44° 28.447' N	122° 13.693' W
Closure	2041/2043	44° 24.786' N	122° 16.156' W
Closure	2047/HWY 20	44° 24.336' N	122° 12.629' W
Closure	2067/HWY 20	44° 24.950' N	122° 00.690' W
Closure	2076/HWY 22	44° 29.151' N	121° 59.989' W
Closure	2212 Kinney Creek RD	44° 41.401' N	122° 14.183' W
Drop Point	10	44° 34.838' N	122° 08.793' W
Drop Point	11	44° 34.520' N	122° 07.428' W
Drop Point	12	44° 34.665' N	122° 07.406' W
Drop Point	15	44° 35.191' N	122° 07.947' W
Drop Point	19	44° 35.987' N	122° 09.385' W
Drop Point	50	44° 34.568' N	122° 18.205' W
Drop Point	52	44° 35.175' N	122° 13.913' W
Drop Point	54	44° 36.925' N	122° 13.253' W
Drop Point	56	44° 33.607' N	122° 07.909' W
Drop Point	58	44° 33.687' N	122° 10.453' W
Incident Command Post		44° 23.766' N	122° 43.482' W
Staging Area	DOT Cinder Pit	44° 26.142' N	121° 57.488' W



7/19/2021 2155
 Acres from IR
 North American 1983 Datum. Lat/Long
 Grid