

122°10.5'W 122°10'W 122°9.5'W 122°9'W 122°8.5'W 122°8'W 122°7.5'W 122°7'W

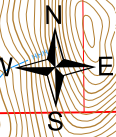
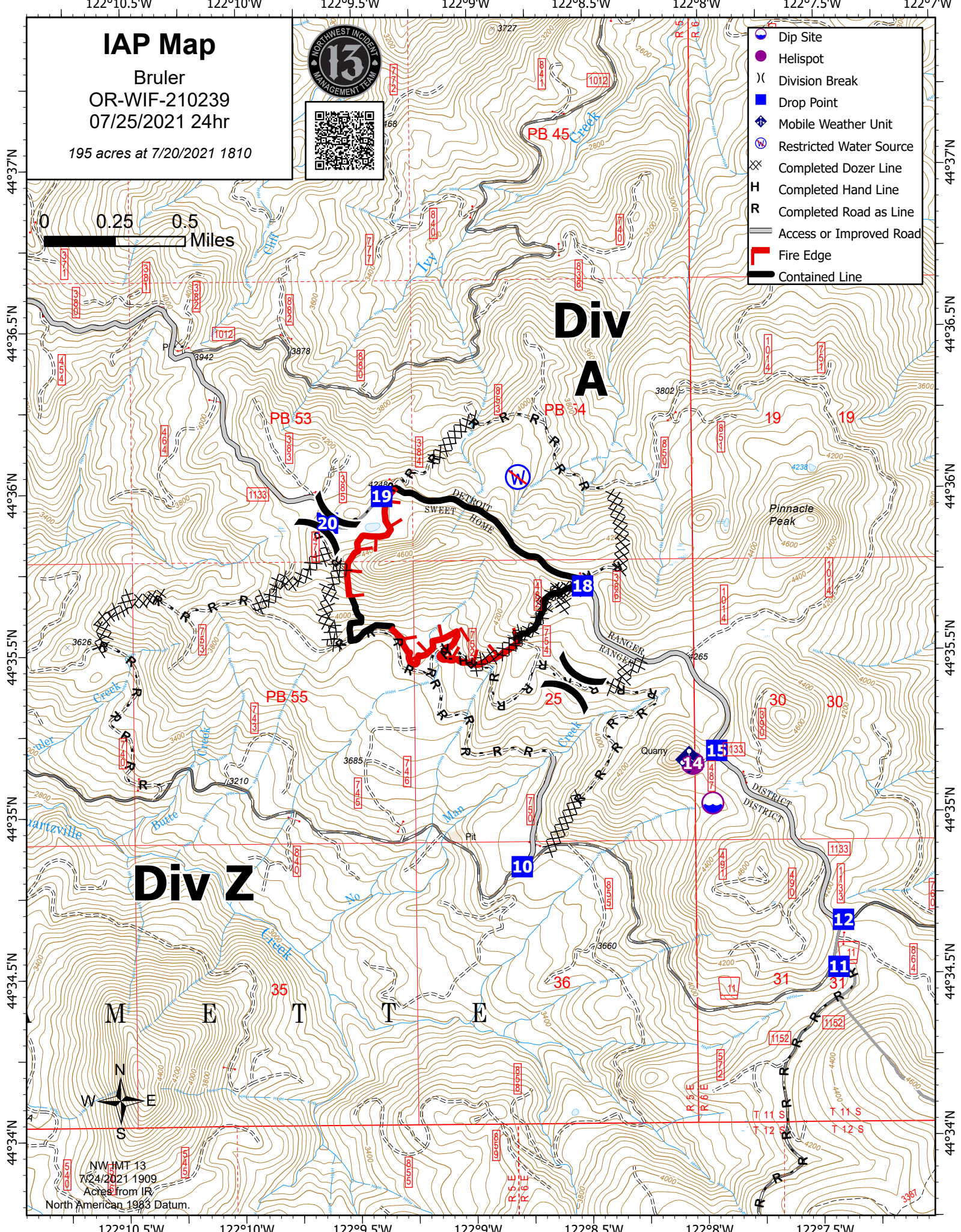
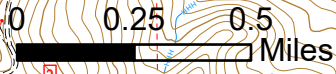
# IAP Map

Bruler  
OR-WIF-210239  
07/25/2021 24hr

195 acres at 7/20/2021 1810



- Dip Site
- Helispot
- Division Break
- Drop Point
- Mobile Weather Unit
- Restricted Water Source
- Completed Dozer Line
- Completed Hand Line
- Completed Road as Line
- Access or Improved Road
- Fire Edge
- Contained Line



NWMT 13  
7/24/2021 1909  
Acres from IR  
North American 1983 Datum.

44°37'N 44°36.5'N 44°36'N 44°35.5'N 44°35'N 44°34.5'N 44°34'N

122°10.5'W 122°10'W 122°9.5'W 122°9'W 122°8.5'W 122°8'W 122°7.5'W 122°7'W