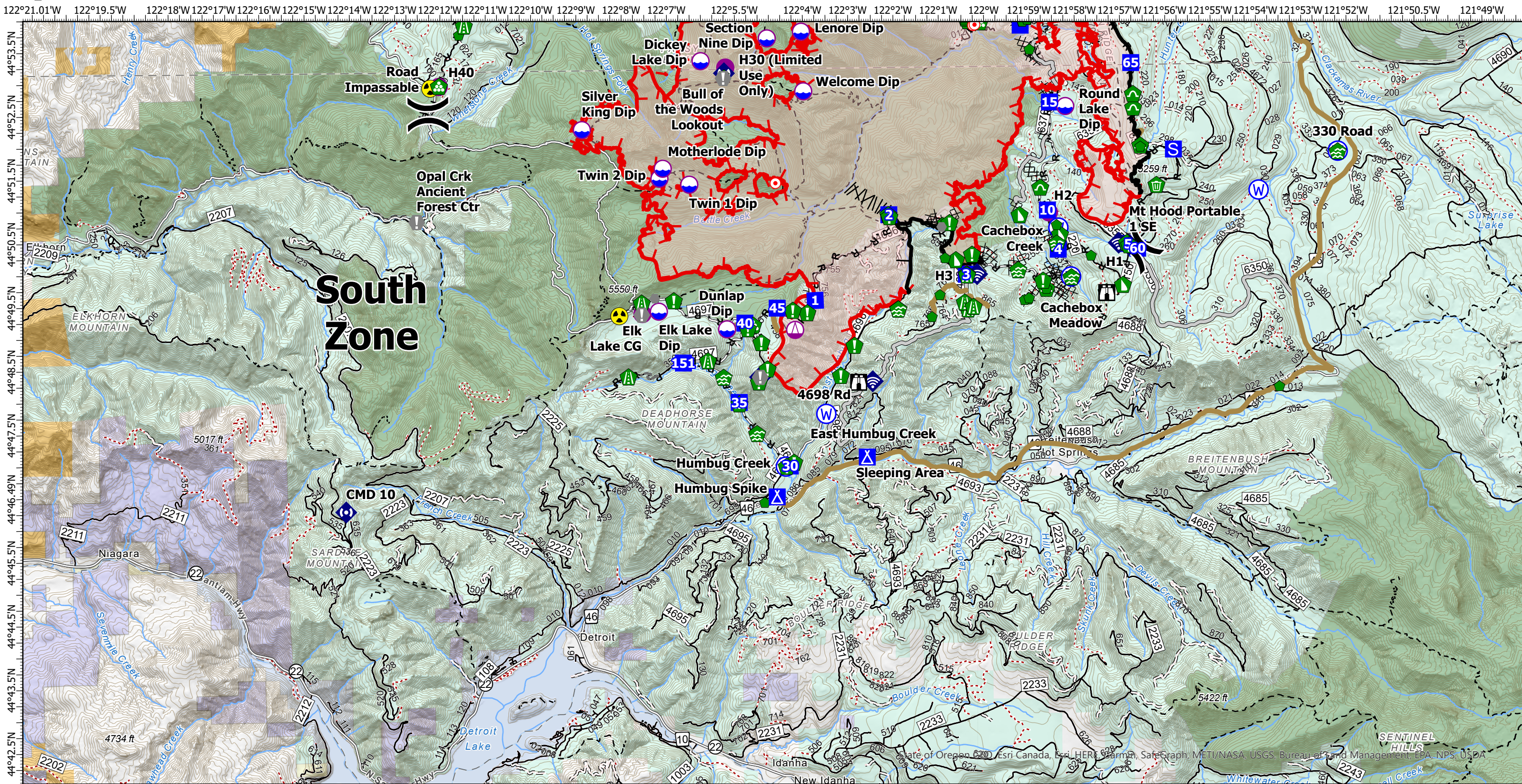


Operations - South



Bull Complex OR-MHF-000753

24,894 acres at
9/25/2021 @ 2004

Dip Site	Staging Area	Stream Crossing	Culvert	Water Source	Access or Improved Road	County Roads
Helispot	Lookout	Road Repair	Clean Up Area	Completed Burnout	Other	High Clearance Vehicles: 2
Sling Site	Hot Spot - Spot Fire	Resource Location	Internet Access	Completed Dozer Line	Repair Line	Open Roads
Division Break	Value at Risk	Repair Point	Mobile Weather Unit	Completed Hand Line	Fire Edge	Closed Roads
Drop Point	Other	Landing or Log Deck	Repeater	Completed Road as Line	Contained Line	Trails
Camp	Water Development or Draft Site	Dozer Push	Hazard		Major Roads	0 0.5 1 2 Miles

NAD83 - Lat/Long Grid

