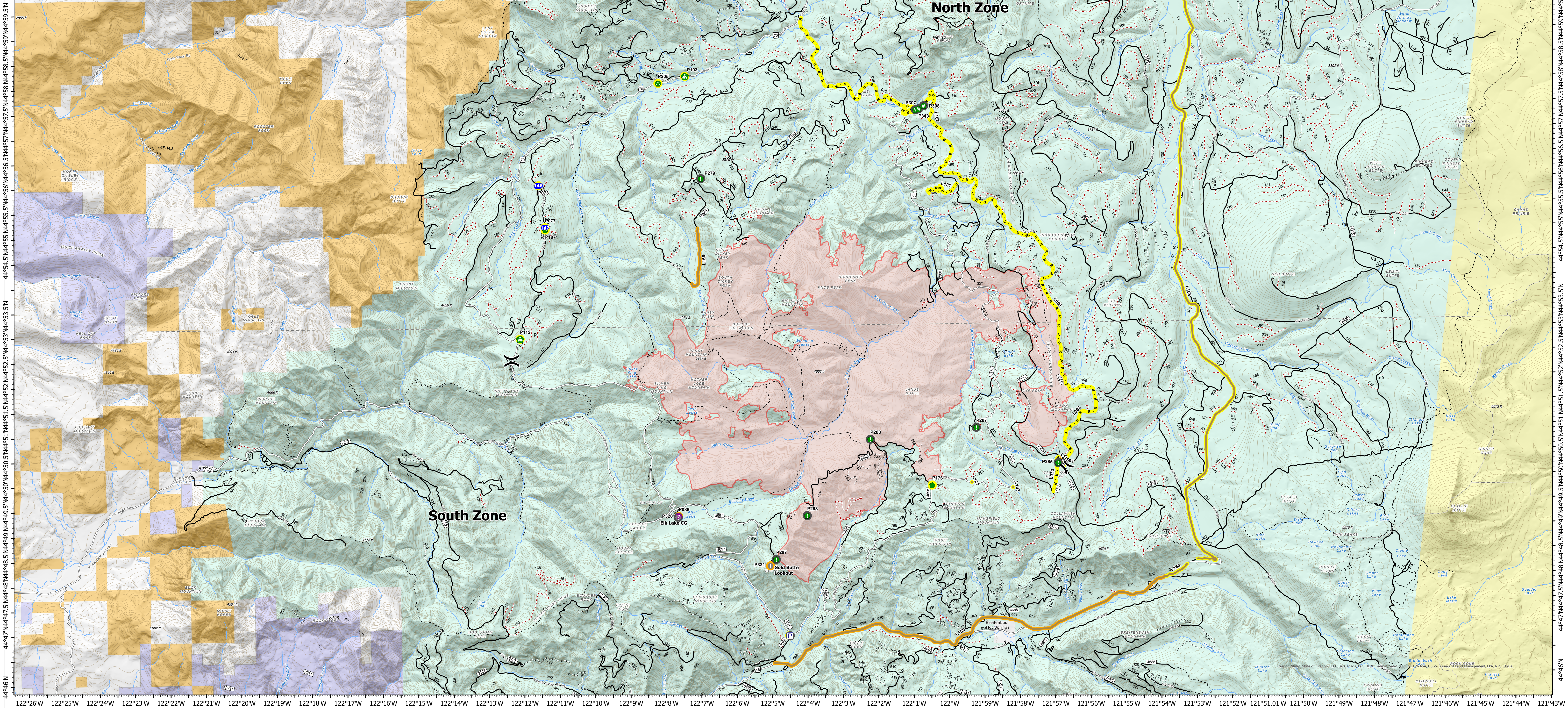


# Other Repair

122°26'W 122°25'W 122°24'W 122°23'W 122°22'W 122°21'W 122°20'W 122°19'W 122°18'W 122°17'W 122°16'W 122°15'W 122°14'W 122°13'W 122°12'W 122°11'W 122°10'W 122°9'W 122°8'W 122°7'W 122°6'W 122°5'W 122°4'W 122°3'W 122°2'W 122°1'W 122°W 121°59'W 121°58'W 121°57'W 121°56'W 121°55'W 121°54'W 121°53'W 121°52'W 121°51.01'W 121°50'W 121°49'W 121°48'W 121°47'W 121°46'W 121°45'W 121°44'W 121°43'W

Point Name	Feature Category	Comments	Latitude NAD83	Longitude NAD83	Repair Status	Repair Comments
P107	Culvert	replace smashed culvert indicator	44° 55.131' N	122° 11.297' W	In Progress	install culvert. Replace smashed culvert indicator
P108	Culvert	metal culvert indicator embedded	44° 58.045' N	122° 08.096' W	In Progress	Replace sign. New T post needed. replace damaged culvert indicator to meet sign specifications
P109	Drop Point		44° 55.012' N	122° 14.452' W	In Progress	Remove signage
P107	Drop Point		44° 55.165' N	122° 11.307' W	In Progress	remove sign
P103	Drop Point	Also a water site	44° 51.565' N	122° 09.470' W	In Progress	add flagging and sign
P106	Helispot	13, 12 frames on west removed	44° 49.323' N	122° 07.598' W	Completed - Ready for Inspection	Throw out trees and slash out of meadow into forest line
P110	Landing or Log Deck	MEIGS/COC Clear place to deck 30 loads of logs, adjacent location for curtain burner, but slash would need hauled down	44° 58.184' N	122° 07.294' W	In Progress	Logs are decked, slash is piled and ready for ACB, scarify seed, and slash
P112	Landing or Log Deck	helicopter expanded for deck ramp; slash. Process whole tree deck. Potential curtain burner location. Pile slash to back end of ramp to leave area for curtain burner.	44° 52.926' N	122° 12.836' W	In Progress	Trees are processed and decked. treat slash cutburner remove decks. Reestablish ditch to overwater. Reestablish ditch, reestablish seed and slash.
P116	Repair Point	pavement ends sign on 6370, 469550 junction	44° 49.907' N	122° 00.418' W	In Progress	Ordered sign and materials
P219	Resource Location	No Go. Sensitive wetland. Consult with RMACS if damaged or used	44° 56.122' N	122° 08.874' W	Other - See Comments	
P285	Resource Location	Invasive plants Tarry ragwort, Birds foot trefoil, Scented geranium with gravel parked where tree logs and log trucks parked	44° 50.318' N	121° 56.848' W	Other - See Comments	Wash equipment. Pull back gravel and grade. Reseed with native species
P287	Resource Location	Spotted knapweed, middle of road in flower 5 plants	44° 51.051' N	121° 59.150' W	Other - See Comments	Clean equipment before leaving area, cover in slash and seed if soil is disturbed
P288	Resource Location	4686 and 4686-800 junction. Invasive blackberry area appears to be hand planted/maintained already	44° 50.838' N	122° 02.153' W	Other - See Comments	add to weed concerns
P293	Resource Location	Alaskan yellow cedar grove on Ridgeband between 800 and 459 stumps	44° 49.313' N	122° 03.964' W	Other - See Comments	inspect mitigate tree mortality
P297	Resource Location	worksite at the base of gold butte trail, generator, toolbox with shop saw and other tools, wood supplies, update generator, toolbox, and other materials are being stored at Detroit Ranger Station warehouse	44° 48.438' N	122° 04.854' W	Other - See Comments	
P307	Road Repair		44° 57.459' N	122° 00.789' W	Other - See Comments	Engineer needed to give specs to repairing shoulder lost to skidding, spring aggregate
P308	Road Repair		44° 57.549' N	122° 00.530' W	Other - See Comments	Remove rounded edges to create a defined 3 plane road prism on edges, spring aggregate
P313	Road Repair		44° 57.478' N	122° 00.681' W	Other - See Comments	Use gradier to pull material back to road surface from fill slope. Remove rounded edges to create a defined 3 plane road prism on edges, spring aggregate
P320	Value at Risk	old lake campground at the end of the 4687 rd, access road is not great quality - 12 picnic tables, 300+ feet of boatramp, 1000+ feet of back and rail, two cars and three scooters, pulled kiosks on 8/15 taken to Detroit ranger station, distic to re-install	44° 49.308' N	122° 03.614' W	Other - See Comments	Wrap removed, staples pulled, material collected and packed out. Tools belong to Sand Mtn Society, leave in place. Arch in place.
P321	Value at Risk	gold butte historic lookout. Wrapped 8/11/21 CK	44° 48.310' N	122° 05.019' W	Completed - Ready for Inspection	
P13	Pump	Volume Pump. Removes any debris when removing pump	44° 46.905' N	122° 04.488' W	In Progress	
P30	Pump	iron work 3 pumps, no longer in field, volume pump still in use	44° 46.899' N	122° 04.488' W	Other - See Comments	

Label	Feature Category	Comments	Latitude NAD83	Longitude NAD83	Repair Status	Repair Comment	Length/Foot	Length/Miles
L127	Repair Line	access line to pumpchance on 6370 between 250 and 253			In Progress	hour on post, make rd of obscure trail to prevent future user trail, water bars to specs, cover with slash	46	0.01
L106	Repair Line	Manicured			Completed - Ready for Inspection		7924	1.31



## Bull Complex OR-MHF-000753 10/17/2021

Pump	Road Repair	Completed - Ready for Inspection	Repair Line	Open Roads	BIA
Helispot	Resource Location	In Progress	Completed - Ready for Inspection	Closed Roads	BLM
Division Break	Repair Point	Other - See Comments	In Progress	Decommissioned Roads	Private
Drop Point	Landing or Log Deck	Completed Road as Line	Major Roads	FS_Road_Decomm	State Forestry
Value at Risk	Culvert	Access or Improved Road	County Roads	Trails	USFS

24,894 acres at 9/25/2021 @ 2004  
North American 1983 Datum. LatLong Grid

0 0.4 0.8 1.6 Miles