

122°2'0"W 122°1'0"W 122°0'0"W 121°59'0"W 121°58'0"W

**Janus Complex**  
 OR-MHF-000738  
*Infrared Map - NIROPS*  
 Infrared Map for 8/05/2021  
 Imagery Acquired: 8/04/2021 @ 0057 PDT  
 IRIN: Trisha Boll (t)/Jen Frazer  
 Interpreted Acres:  
 Janus: 350 (+ 170)  
 UTM Zone 11N NAD83

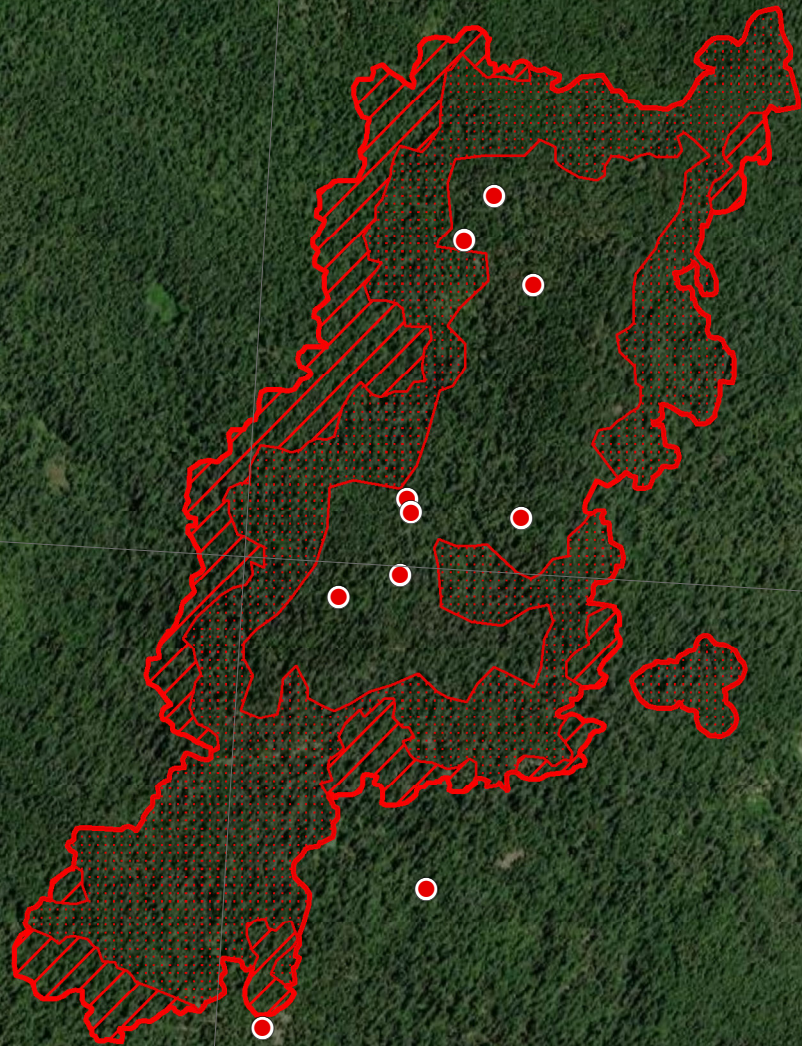






44°53'0"N

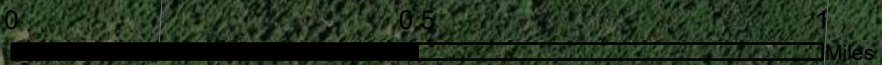
44°52'0"N

44°53'0"N

44°52'0"N



-  IR Isolated Heat
-  IR Heat Perimeter
-  IR Intense Heat
-  IR Scattered Heat



Source: Esri, Maxar, GeoEye, Earthstar Geographics, CNES/Airbus DS, USDA, USGS, AeroGRID, IGN, and the GIS User Community

122°2'0"W 122°1'0"W 122°0'0"W 121°59'0"W 121°58'0"W