

122°3'0"W

122°2'0"W

122°1'0"W

122°0'0"W

121°59'0"W

121°58'0"W

Bull Complex
 OR-MHF-000738
Infrared Map - NIROPS
 Infrared Map for 8/14/2021
 Imagery Acquired: 8/14/2021 @ 0015 PDT
 IRIN: Trisha Boll (t)/Jen Frazer
 Interpreted Acres:
 Bull Complex: 1280 (+81)
 UTM Zone 10N NAD83



44°53'0"N

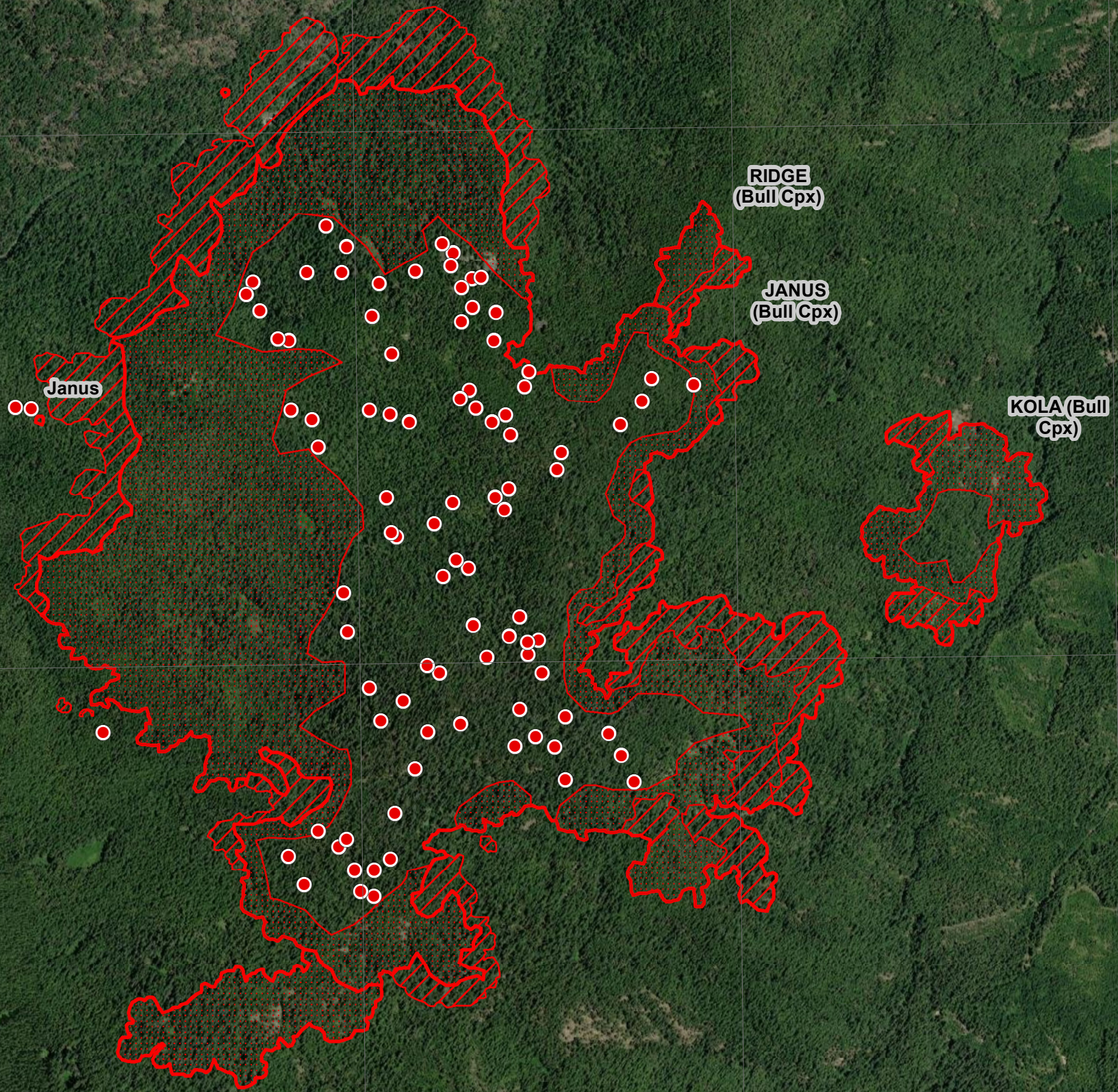
44°53'0"N





44°52'0"N

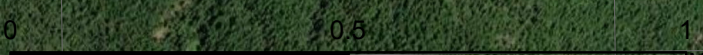
44°52'0"N

44°51'0"N

44°51'0"N



-  IR Isolated Heat
-  IR Heat Perimeter
-  IR Intense Heat
-  IR Scattered Heat



Source: Esri, Maxar, GeoEye, Earthstar Geographics, CNES/Airbus DS, USDA, USGS, AeroGRID, IGN, and the GIS User Community, Copyright:© 2013 National Geographic Society, i-cubed

122°3'0"W

122°2'0"W

122°1'0"W

122°0'0"W

121°59'0"W

121°58'0"W