

-122°9'30" -122°9' -122°8'30" -122°8' -122°7'30" -122°7' -122°6'30" -122°6' -122°5'30" -122°5' -122°4'30" -122°4' -122°3'30" -122°3' -122°2'30" -122°2' -122°1'30" -122°1' -122°0'30" -122° -121°59'30" -121°59' -121°58'30" -121°58' -121°57'30" -121°57' -121°56'30" -121°56' -121°55'30" -121°55' -121°54'30" -121°54'

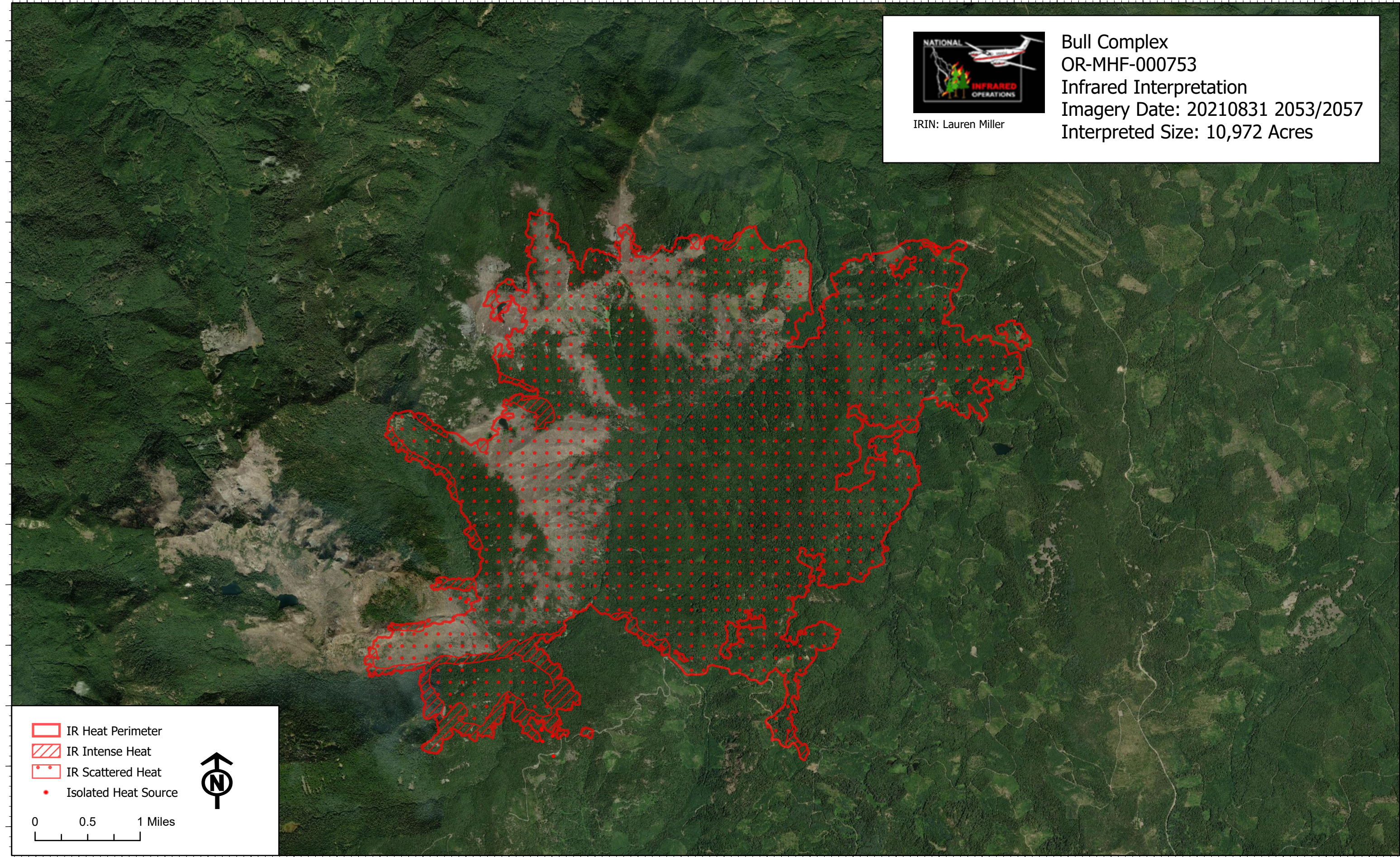
44°56'
44°55'30"
44°55'
44°54'30"
44°54'
44°53'30"
44°53'
44°52'30"
44°52'
44°51'30"
44°51'
44°50'30"
44°50'
44°49'30"





44°56'
44°55'30"
44°55'
44°54'30"
44°54'
44°53'30"
44°53'
44°52'30"
44°52'
44°51'30"
44°51'
44°50'30"
44°50'
44°49'30"



IRIN: Lauren Miller

Bull Complex
OR-MHF-000753
Infrared Interpretation
Imagery Date: 20210831 2053/2057
Interpreted Size: 10,972 Acres



-  IR Heat Perimeter
-  IR Intense Heat
-  IR Scattered Heat
-  Isolated Heat Source



0 0.5 1 Miles

-122°9'30" -122°9' -122°8'30" -122°8' -122°7'30" -122°7' -122°6'30" -122°6' -122°5'30" -122°5' -122°4'30" -122°4' -122°3'30" -122°3' -122°2'30" -122°2' -122°1'30" -122°1' -122°0'30" -122° -121°59'30" -121°59' -121°58'30" -121°58' -121°57'30" -121°57' -121°56'30" -121°56' -121°55'30" -121°55' -121°54'30" -121°54'