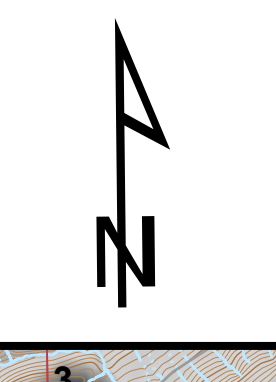
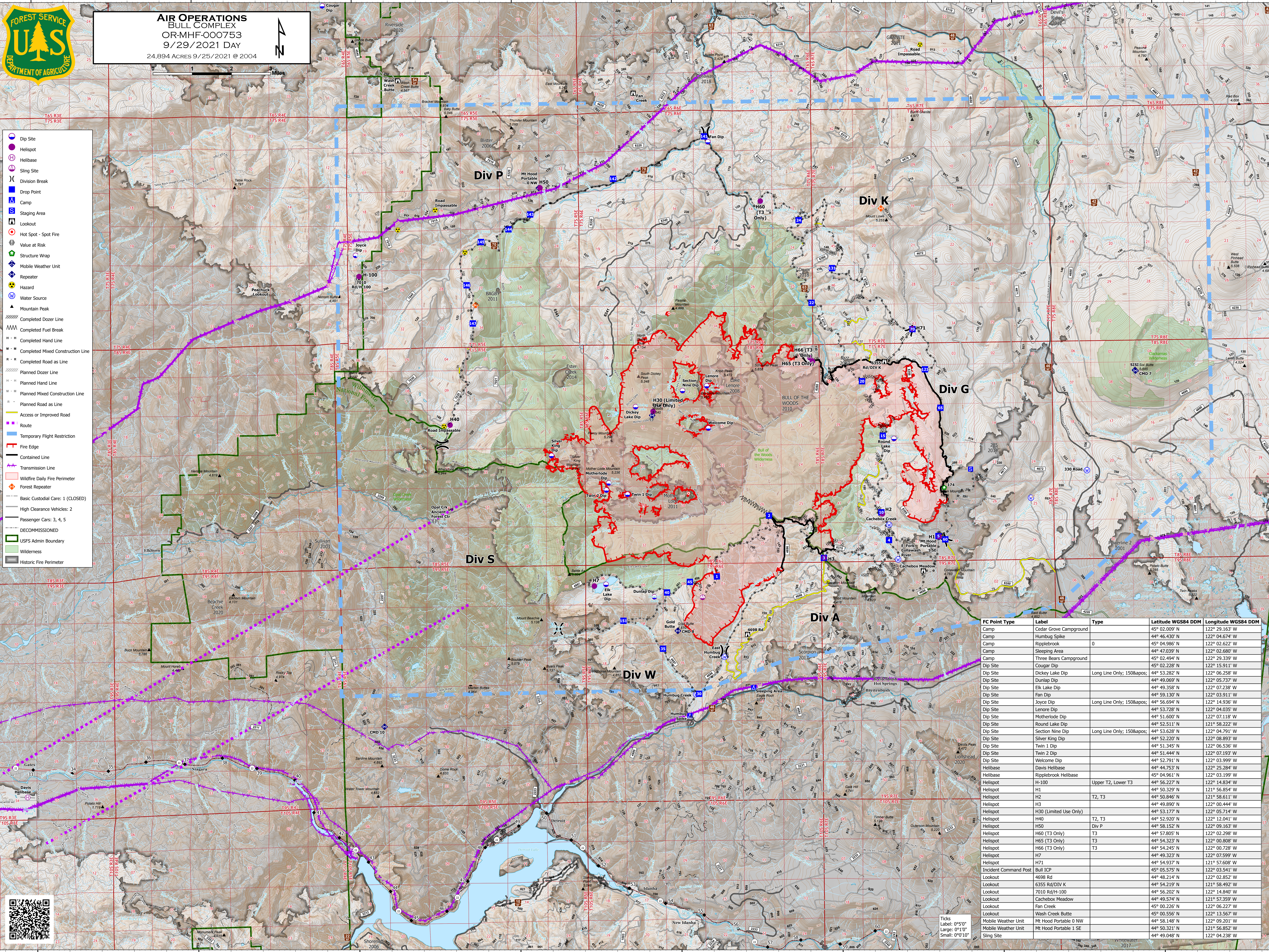




AIR OPERATIONS
BULL COMPLEX
 OR-MHF-000753
 9/29/2021 DAY
 24,894 ACRES 9/25/2021 @ 2004



- Dip Site
- Helibase
- Sling Site
- Division Break
- Drop Point
- Camp
- Staging Area
- Lookout
- Hot Spot - Spot Fire
- Value at Risk
- Structure Wrap
- Mobile Weather Unit
- Repeater
- Hazard
- Water Source
- Mountain Peak
- Completed Dozer Line
- Completed Fuel Break
- Completed Hand Line
- Completed Mixed Construction Line
- Planned Dozer Line
- Planned Hand Line
- Planned Mixed Construction Line
- Planned Road as Line
- Access or Improved Road
- Route
- Temporary Flight Restriction
- Fire Edge
- Contained Line
- Transmission Line
- Wildfire Daily Fire Perimeter
- Forest Repeater
- Basic Custodial Care: 1 (CLOSED)
- High Clearance Vehicles: 2
- Passenger Cars: 3, 4, 5
- DECOMMISSIONED
- USFS Admin Boundary
- Wilderness
- Historic Fire Perimeter



FC Point Type	Label	Type	Latitude WGS84 DDM	Longitude WGS84 DDM
Camp	Cedar Grove Campground		45° 02.009' N	122° 29.163' W
Camp	Humbug Spike		44° 46.430' N	122° 04.674' W
Camp	Ripplebrook	0	45° 04.986' N	122° 02.622' W
Camp	Sleeping Area		44° 47.039' N	122° 02.680' W
Camp	Three Bears Campground		45° 02.494' N	122° 29.339' W
Dip Site	Cougar Dip		45° 02.228' N	122° 15.911' W
Dip Site	Dickey Lake Dip	Long Line Only; 1508apcs;	44° 53.282' N	122° 06.258' W
Dip Site	Dunlap Dip		44° 49.069' N	122° 05.737' W
Dip Site	Elk Lake Dip		44° 49.358' N	122° 07.238' W
Dip Site	Fan Dip		44° 59.130' N	122° 03.911' W
Dip Site	Joyce Dip	Long Line Only; 1508apcs;	44° 56.694' N	122° 14.936' W
Dip Site	Lenore Dip		44° 53.728' N	122° 04.035' W
Dip Site	Motherlode Dip		44° 51.600' N	122° 07.118' W
Dip Site	Round Lake Dip		44° 52.511' N	121° 58.222' W
Dip Site	Section Nine Dip	Long Line Only; 1508apcs;	44° 53.628' N	122° 04.791' W
Dip Site	Silver King Dip		44° 52.220' N	122° 08.893' W
Dip Site	Twin 1 Dip		44° 51.345' N	122° 06.536' W
Dip Site	Twin 2 Dip		44° 51.444' N	122° 07.193' W
Dip Site	Welcome Dip		44° 52.791' N	122° 03.999' W
Helibase	Davis Helibase		44° 44.753' N	122° 25.284' W
Helibase	Ripplebrook Helibase		45° 04.961' N	122° 03.199' W
Helispot	H-100	Upper T2, Lower T3	44° 56.227' N	122° 14.834' W
Helispot	H1		44° 50.329' N	121° 56.854' W
Helispot	H2	T2, T3	44° 50.846' N	121° 58.611' W
Helispot	H3		44° 49.890' N	122° 00.444' W
Helispot	H30 (Limited Use Only)		44° 53.177' N	122° 05.714' W
Helispot	H40	T2, T3	44° 52.920' N	122° 12.041' W
Helispot	H50	Div P	44° 58.152' N	122° 09.163' W
Helispot	H60 (T3 Only)	T3	44° 57.805' N	122° 02.298' W
Helispot	H65 (T3 Only)	T3	44° 54.323' N	122° 00.808' W
Helispot	H66 (T3 Only)	T3	44° 54.245' N	122° 00.728' W
Helispot	H7		44° 49.323' N	122° 07.599' W
Helispot	H71		44° 54.937' N	121° 57.608' W
Incident Command Post	Bull ICP		45° 05.575' N	122° 03.541' W
Lookout	4698 Rd		44° 48.214' N	122° 02.852' W
Lookout	6355 Rd/DIV K		44° 54.219' N	121° 58.492' W
Lookout	7010 Rd/H-100		44° 56.202' N	122° 14.840' W
Lookout	Cachebox Meadow		44° 49.574' N	121° 57.359' W
Lookout	Fan Creek		45° 00.226' N	122° 06.227' W
Lookout	Wash Creek Butte		45° 00.556' N	122° 13.567' W
Mobile Weather Unit	Mt Hood Portable 0 NW		44° 58.148' N	122° 09.201' W
Mobile Weather Unit	Mt Hood Portable 1 SE		44° 50.321' N	121° 56.852' W
Sling Site			44° 49.048' N	122° 04.238' W

Ticks
 Label: 0'50"
 Large: 0'10"
 Small: 0'010"

