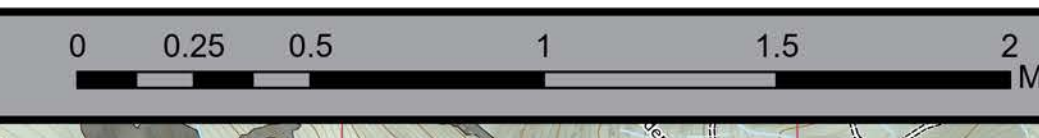




**SUPPRESSION REPAIR**  
**BULL COMPLEX**  
**OR-MHF-000753**  
**9/29/2021 DAY**  
 24,894 ACRES ON 9/25/2021 @ 2004



**Summary of Total Fire** \*does not include NF46

| Repair Status                    | Length (mi)   | Percent |
|----------------------------------|---------------|---------|
| Completed - Inspected            | 16.97         | 10.99%  |
| Completed - Ready for Inspection | 48.07         | 31.14%  |
| In Progress                      | 41.44         | 26.84%  |
| Repair Needed                    | 46.42         | 30.07%  |
| <b>Total Line</b>                | <b>154.39</b> |         |

**Summary of Div K**

| Repair Status                    | Percent | Length (mi)  | Length (ft)   |
|----------------------------------|---------|--------------|---------------|
| Completed - Ready for Inspection | 5.26%   | 2.10         | 11087         |
| In Progress                      | 30.18%  | 12.04        | 63558         |
| Repair Needed                    | 61.58%  | 24.56        | 129693        |
| <b>Div K</b>                     |         | <b>39.89</b> | <b>210593</b> |

| Access or Improved Road          | Length (mi)  | Length (ft)   |
|----------------------------------|--------------|---------------|
| Repair Needed                    | 2.11         | 11147         |
| <b>Completed Dozer Line</b>      | <b>2.18</b>  | <b>11488</b>  |
| Completed - Ready for Inspection | 0.17         | 875           |
| In Use - Fire Management         | 0.37         | 1967          |
| Repair Needed                    | 1.64         | 8646          |
| <b>Completed Hand Line</b>       | <b>2.64</b>  | <b>13935</b>  |
| Completed - Ready for Inspection | 1.67         | 8794          |
| In Use - Fire Management         | 0.05         | 238           |
| Repair Needed                    | 0.93         | 4903          |
| <b>Completed Road as Line</b>    | <b>25.71</b> | <b>135735</b> |
| Completed - Ready for Inspection | 0.27         | 1418          |
| In Progress                      | 11.87        | 62689         |
| In Use - Fire Management         | 0.58         | 3087          |
| Repair Needed                    | 12.98        | 68541         |
| <b>Other</b>                     | <b>0.18</b>  | <b>963</b>    |
| Unknown                          | 0.18         | 963           |
| <b>Repair Line</b>               | <b>6.94</b>  | <b>36651</b>  |
| In Progress                      | 0.16         | 869           |
| Repair Needed                    | 6.78         | 35782         |
| <b>Road Repair</b>               | <b>0.13</b>  | <b>674</b>    |
| Repair Needed                    | 0.13         | 674           |

**Summary of Div P**

| Repair Status                    | Percent | Length (mi)  | Length (ft)   |
|----------------------------------|---------|--------------|---------------|
| Completed - Inspected            | 0.16%   | 0.06         | 322           |
| Completed - Ready for Inspection | 71.63%  | 26.51        | 139969        |
| In Progress                      | 26.35%  | 9.75         | 51486         |
| Repair Needed                    | 1.23%   | 0.46         | 2413          |
| <b>Div P</b>                     |         | <b>37.01</b> | <b>195418</b> |

| Access or Improved Road          | Length (mi)  | Length (ft)   |
|----------------------------------|--------------|---------------|
| In Progress                      | 0.26         | 1368          |
| In Progress                      | 0.26         | 1368          |
| <b>Completed Hand Line</b>       | <b>0.57</b>  | <b>3010</b>   |
| In Progress                      | 0.11         | 597           |
| Repair Needed                    | 0.46         | 2413          |
| <b>Completed Road as Line</b>    | <b>27.60</b> | <b>145751</b> |
| Completed - Ready for Inspection | 18.23        | 96230         |
| In Progress                      | 9.38         | 49521         |
| <b>Other</b>                     | <b>0.23</b>  | <b>1228</b>   |
| Unknown                          | 0.23         | 1228          |
| <b>Repair Line</b>               | <b>8.34</b>  | <b>44061</b>  |
| Completed - Inspected            | 0.06         | 322           |
| Completed - Ready for Inspection | 8.28         | 43739         |

**Summary of Div G**

| Repair Status                    | Percent | Length (mi)  | Length (ft)   |
|----------------------------------|---------|--------------|---------------|
| Completed - Ready for Inspection | 15.78%  | 3.52         | 18563         |
| In Progress                      | 23.54%  | 5.25         | 27725         |
| Repair Needed                    | 60.72%  | 13.54        | 71468         |
| <b>Div G</b>                     |         | <b>22.30</b> | <b>117756</b> |

| Access or Improved Road          | Length (mi)  | Length (ft)  |
|----------------------------------|--------------|--------------|
| Repair Needed                    | 1.87         | 9881         |
| <b>Completed Dozer Line</b>      | <b>2.27</b>  | <b>11999</b> |
| Completed - Ready for Inspection | 0.24         | 1261         |
| In Progress                      | 1.30         | 6853         |
| Repair Needed                    | 0.74         | 3885         |
| <b>Completed Hand Line</b>       | <b>0.63</b>  | <b>3344</b>  |
| Repair Needed                    | 0.63         | 3344         |
| <b>Completed Road as Line</b>    | <b>16.45</b> | <b>86846</b> |
| Completed - Ready for Inspection | 3.28         | 17302        |
| In Progress                      | 3.95         | 20872        |
| Repair Needed                    | 9.22         | 48672        |
| <b>Repair Line</b>               | <b>1.08</b>  | <b>5686</b>  |
| Repair Needed                    | 1.08         | 5686         |

**Summary of Div A**

| Repair Status                    | Percent | Length (mi)  | Length (ft)   |
|----------------------------------|---------|--------------|---------------|
| Completed - Inspected            | 12.49%  | 5.20         | 27438         |
| Completed - Ready for Inspection | 37.85%  | 15.75        | 83183         |
| In Progress                      | 34.59%  | 14.40        | 76018         |
| Repair Needed                    | 15.06%  | 6.27         | 33099         |
| <b>Div A</b>                     |         | <b>41.62</b> | <b>219749</b> |

| Access or Improved Road                  | Length (mi)  | Length (ft)   |
|--|--------------|---------------|
| Completed - Ready for Inspection         | 0.23         | 1199          |
| In Progress                              | 6.26         | 33073         |
| Repair Needed                            | 4.85         | 25584         |
| <b>Completed Dozer Line</b>              | <b>5.78</b>  | <b>30506</b>  |
| Completed - Inspected                    | 0.29         | 1543          |
| Completed - Ready for Inspection         | 0.81         | 4259          |
| In Progress                              | 3.98         | 20989         |
| Repair Needed                            | 0.70         | 3715          |
| <b>Completed Fuel Break</b>              | <b>0.90</b>  | <b>4742</b>   |
| Completed - Inspected                    | 0.90         | 4742          |
| <b>Completed Hand Line</b>               | <b>0.28</b>  | <b>1481</b>   |
| Completed - Inspected                    | 0.17         | 906           |
| In Progress                              | 1.16         | 6117          |
| Repair Needed                            | 0.04         | 216           |
| <b>Completed Mixed Construction Line</b> | <b>0.04</b>  | <b>186</b>    |
| Repair Needed                            | 0.04         | 186           |
| <b>Completed Road as Line</b>            | <b>20.67</b> | <b>109146</b> |
| Completed - Ready for Inspection         | 2.48         | 13070         |
| Completed - Ready for Inspection         | 14.58        | 77004         |
| In Progress                              | 3.63         | 18664         |
| Repair Needed                            | 6.27         | 33099         |
| <b>Other</b>                             | <b>0.08</b>  | <b>408</b>    |
| Unknown                                  | 0.00         | 11            |
| <b>Repair Line</b>                       | <b>2.62</b>  | <b>13821</b>  |
| Completed - Inspected                    | 1.36         | 7177          |
| Completed - Ready for Inspection         | 0.14         | 721           |
| In Progress                              | 0.51         | 2717          |
| Repair Needed                            | 0.61         | 3206          |

**Summary of Div W**

| Repair Status                    | Percent | Length (mi)  | Length (ft)  |
|----------------------------------|---------|--------------|--------------|
| Completed - Inspected            | 85.01%  | 11.54        | 60921        |
| Completed - Ready for Inspection | 8.43%   | 1.14         | 6042         |
| Repair Needed                    | 6.01%   | 0.82         | 4306         |
| <b>Div W</b>                     |         | <b>13.57</b> | <b>71660</b> |

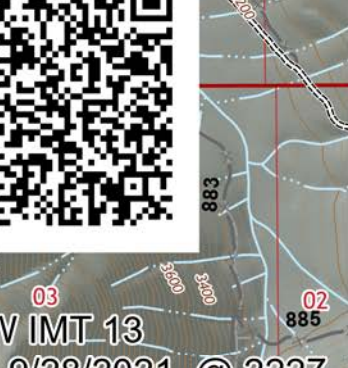
  

| Completed Hand Line              | Length (mi) | Length (ft)  |
|----------------------------------|-------------|--------------|
| Completed - Inspected            | 1.30        | 6879         |
| Completed - Inspected            | 1.23        | 6488         |
| Other - See Comments             | 0.07        | 391          |
| <b>Completed Road as Line</b>    | <b>9.81</b> | <b>51797</b> |
| Completed - Inspected            | 9.55        | 50431        |
| Completed - Ready for Inspection | 0.26        | 1366         |
| <b>Other</b>                     | <b>1.01</b> | <b>5324</b>  |
| Completed - Inspected            | 0.52        | 2750         |
| Repair Needed                    | 0.49        | 2574         |
| <b>Repair Line</b>               | <b>1.45</b> | <b>7660</b>  |
| Completed - Inspected            | 0.24        | 1252         |
| Completed - Ready for Inspection | 0.89        | 4676         |
| Repair Needed                    | 0.33        | 1732         |

**Repair Status Point**

- Completed - Inspected
- In Use - Fire Management
- Completed - Ready for Inspection
- In Progress
- Repair Needed
- No Repair Needed
- Other - See Comments
- Unknown

- Dip Site
- Heliport
- Sling Site
- Division Break
- Drop Point
- Camp
- Staging Area
- Lookout
- Value at Risk
- Other
- Water Development or Draft Site
- Structure Wrap
- Stream Crossing
- Road Repair
- Resource Location
- Repair Point
- Fencing or Log Deck
- Landing - Cut/Damaged
- Dozer Push
- Culvert
- Clean Up Area
- Mobile Weather Unit
- Hazard
- Water Source
- Completed Dozer Line
- Completed Fuel Break
- Completed Hand Line
- Completed Mixed Construction Line
- Completed Road as Line
- Access or Improved Road
- Other
- Repair Line
- Road Repair
- Wildfire Daily Fire Perimeter
- Basic Custodial Care: 1 (CLOSED)
- High Clearance Vehicles: 2
- Passenger Cars: 3, 4, 5
- DECOMMISSIONED
- Wilderness
- USFS Admin Boundary
- Historic Fire Perimeter
- Bureau of Land Management (BLM)
- Department of Defense (DOD)
- State
- US Forest Service (USFS)
- Private
- County Boundary



NW 101-10  
 Map Created: 9/28/2021 @ 2227  
 Acres from IR  
 North American 1983 Datum