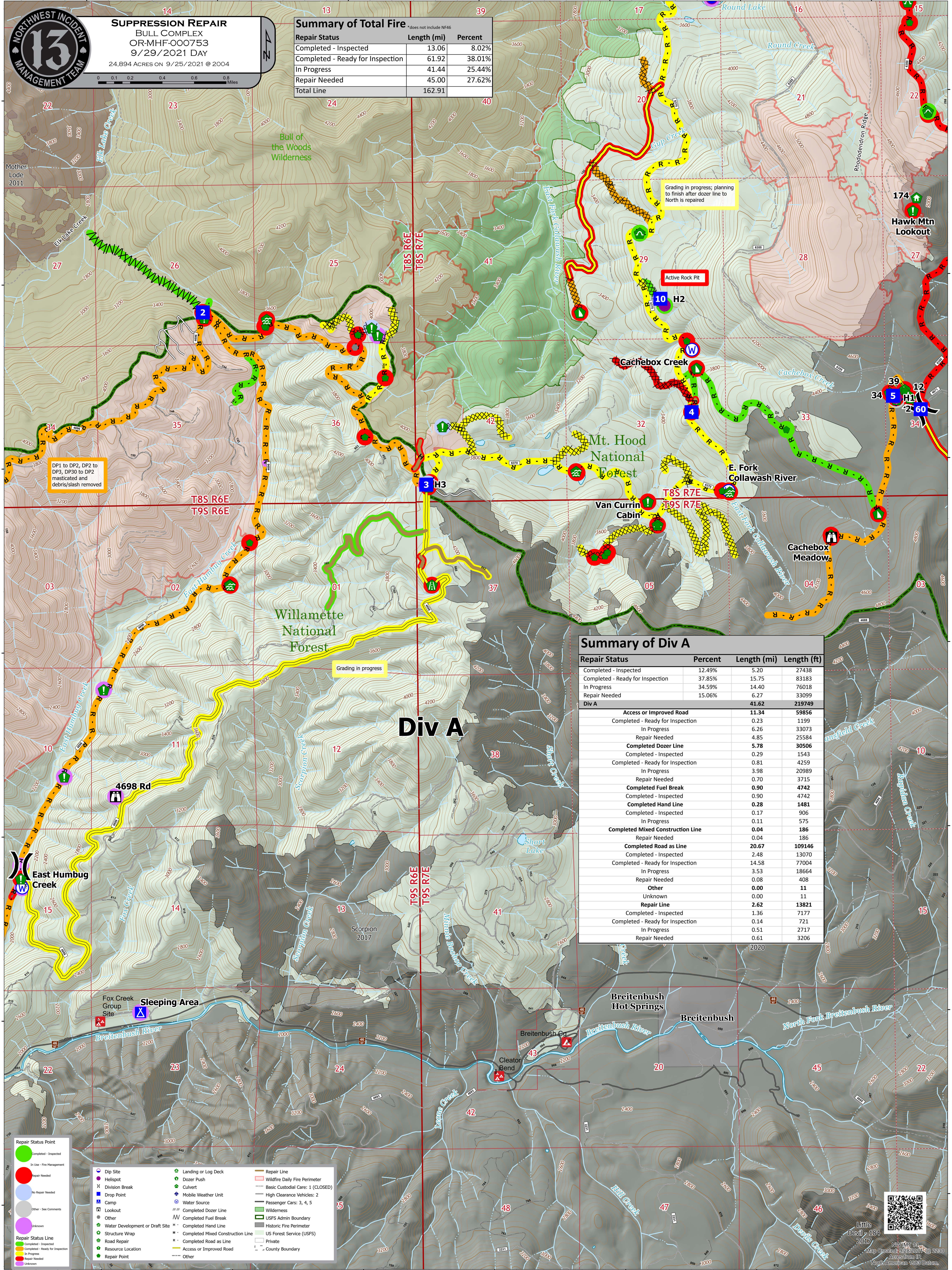




**SUPPRESSION REPAIR**  
**BULL COMPLEX**  
 OR-MHF-000753  
 9/29/2021 DAY  
 24,894 ACRES ON 9/25/2021 @ 2004

**Summary of Total Fire** \*does not include NF46

Repair Status	Length (mi)	Percent
Completed - Inspected	13.06	8.02%
Completed - Ready for Inspection	61.92	38.01%
In Progress	41.44	25.44%
Repair Needed	45.00	27.62%
<b>Total Line</b>	<b>162.91</b>	



**Summary of Div A**

Repair Status	Percent	Length (mi)	Length (ft)
Completed - Inspected	12.49%	5.20	27438
Completed - Ready for Inspection	37.85%	15.75	83183
In Progress	34.59%	14.40	76018
Repair Needed	15.06%	6.27	33099
<b>Div A</b>		<b>41.62</b>	<b>219749</b>
<b>Access or Improved Road</b>		<b>11.34</b>	<b>59856</b>
Completed - Ready for Inspection		0.23	1199
In Progress		6.26	33073
Repair Needed		4.85	25584
<b>Completed Dozer Line</b>		<b>5.78</b>	<b>30506</b>
Completed - Inspected		0.29	1543
Completed - Ready for Inspection		0.81	4259
In Progress		3.98	20989
Repair Needed		0.70	3715
<b>Completed Fuel Break</b>		<b>0.90</b>	<b>4742</b>
Completed - Inspected		0.90	4742
<b>Completed Hand Line</b>		<b>0.28</b>	<b>1481</b>
Completed - Inspected		0.17	906
In Progress		0.11	575
<b>Completed Mixed Construction Line</b>		<b>0.04</b>	<b>186</b>
Repair Needed		0.04	186
<b>Completed Road as Line</b>		<b>20.67</b>	<b>109146</b>
Completed - Inspected		2.48	13070
Completed - Ready for Inspection		14.58	77004
In Progress		3.53	18664
Repair Needed		0.08	408
<b>Other</b>		<b>0.00</b>	<b>11</b>
Unknown		0.00	11
<b>Repair Line</b>		<b>2.62</b>	<b>13821</b>
Completed - Inspected		1.36	7177
Completed - Ready for Inspection		0.14	721
In Progress		0.51	2717
Repair Needed		0.61	3206

**Repair Status Point**

- Green circle: Completed - Inspected
- Red circle: Repair Needed
- Blue circle: In Use - Fire Management
- White circle: No Repair Needed
- Grey circle: Other - See Comments
- Purple circle: Unknown

**Repair Status Line**

- Green line: Completed - Inspected
- Yellow line: Completed - Ready for Inspection
- Orange line: In Progress
- Red line: Repair Needed
- White line: Unknown

**Other Symbols**

- Dip Site
- Helispot
- Division Break
- Drop Point
- Camp
- Lookout
- Other
- Water Development or Draft Site
- Structure Wrap
- Road Repair
- Resource Location
- Repair Point
- Landing or Log Deck
- Dozer Push
- Culvert
- Mobile Weather Unit
- Water Source
- Completed Dozer Line
- Completed Fuel Break
- Completed Hand Line
- Completed Mixed Construction Line
- Completed Road as Line
- Access or Improved Road
- Other
- Repair Line
- Wildfire Daily Fire Perimeter
- Basic Custodial Care: 1 (CLOSED)
- High Clearance Vehicles: 2
- Passenger Cars: 3, 4, 5
- Wilderness
- USFS Admin Boundary
- Historic Fire Perimeter
- US Forest Service (USFS)
- Private
- County Boundary

