



SUPPRESSION REPAIR
BULL COMPLEX
 OR-MHF-000753
 9/29/2021 DAY
 24,894 ACRES ON 9/25/2021 @ 2004

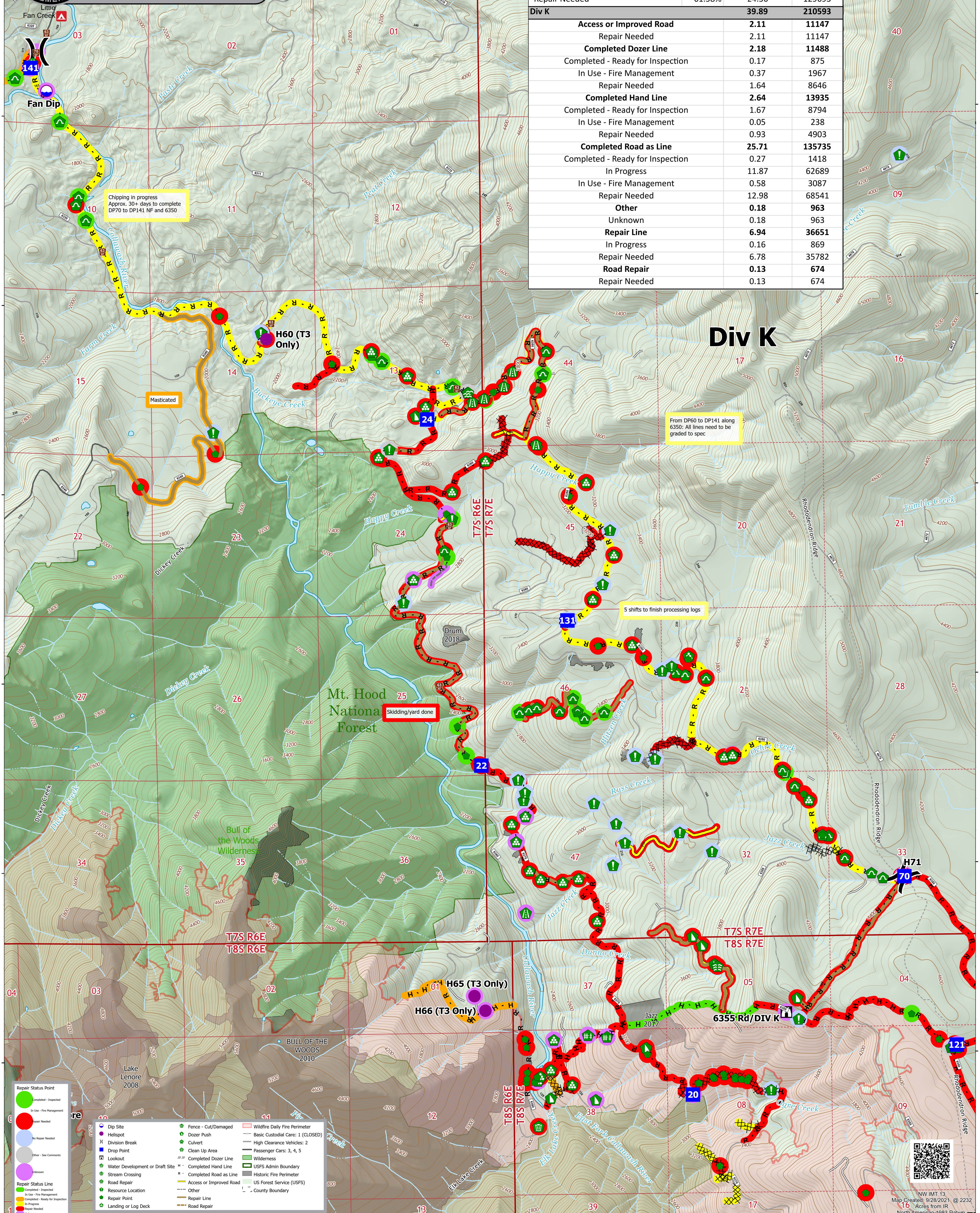


Summary of Total Fire *does not include NF46

Repair Status	Length (mi)	Percent
Completed - Inspected	16.97	10.99%
Completed - Ready for Inspection	48.07	31.14%
In Progress	41.44	26.84%
Repair Needed	46.42	30.07%
Total Line	154.39	

Summary of Div K

Repair Status	Percent	Length (mi)	Length (ft)
Completed - Ready for Inspection	5.26%	2.10	11087
In Progress	30.18%	12.04	63558
Repair Needed	61.58%	24.56	129693
Div K		39.89	210593
Access or Improved Road		2.11	11147
Repair Needed		2.11	11147
Completed Dozer Line		2.18	11488
Completed - Ready for Inspection		0.17	875
In Use - Fire Management		0.37	1967
Repair Needed		1.64	8646
Completed Hand Line		2.64	13935
Completed - Ready for Inspection		1.67	8794
In Use - Fire Management		0.05	238
Repair Needed		0.93	4903
Completed Road as Line		25.71	135735
Completed - Ready for Inspection		0.27	1418
In Progress		11.87	62689
In Use - Fire Management		0.58	3087
Repair Needed		12.98	68541
Other		0.18	963
Unknown		0.18	963
Repair Line		6.94	36651
In Progress		0.16	869
Repair Needed		6.78	35782
Road Repair		0.13	674
Repair Needed		0.13	674



Repair Status Point

- Completed - Inspected (Green circle)
- Completed - Ready for Inspection (Yellow circle)
- In Progress (Red circle)
- Repair Needed (Red circle with exclamation mark)
- No Repair Needed (Blue circle)
- Other - See Comments (Grey circle)
- Unknown (Purple circle)

Repair Status Line

- Completed - Inspected (Green line)
- In Use - Fire Management (Blue line)
- Completed - Ready for Inspection (Yellow line)
- In Progress (Red line)
- Repair Needed (Red line with exclamation mark)
- Unknown (Purple line)

Legend

- Dip Site (Blue circle)
- Helispot (Purple circle)
- Division Break (X)
- Drop Point (Blue square)
- Lookout (Green triangle)
- Water Development or Draft Site (Green circle)
- Stream Crossing (Blue line)
- Road Repair (Red line)
- Resource Location (Green circle)
- Repair Point (Red circle)
- Landing or Log Deck (Green circle)
- Fence - Cut/Damaged (Green line)
- Dozer Push (Green triangle)
- Culvert (Green circle)
- Clean Up Area (Green circle)
- Completed Dozer Line (Green line)
- Completed Hand Line (Green line)
- Completed Road as Line (Green line)
- Access or Improved Road (Yellow line)
- Repair Line (Red line)
- Road Repair (Red line)
- Wildfire Daily Fire Perimeter (Red line)
- Basic Custodial Care: 1 (CLOSED) (Red line)
- High Clearance Vehicles: 2 (Red line)
- Passenger Cars: 3, 4, 5 (Red line)
- Wilderness (Green area)
- USFS Admin Boundary (Green line)
- Historic Fire Perimeter (Red line)
- US Forest Service (USFS) (Green area)
- Other (Red line)
- County Boundary (Dashed line)

Div K

From DP60 to DP141 along 6350: All lines need to be graded to spec

5 shifts to finish processing logs

Skidding/yard done

