

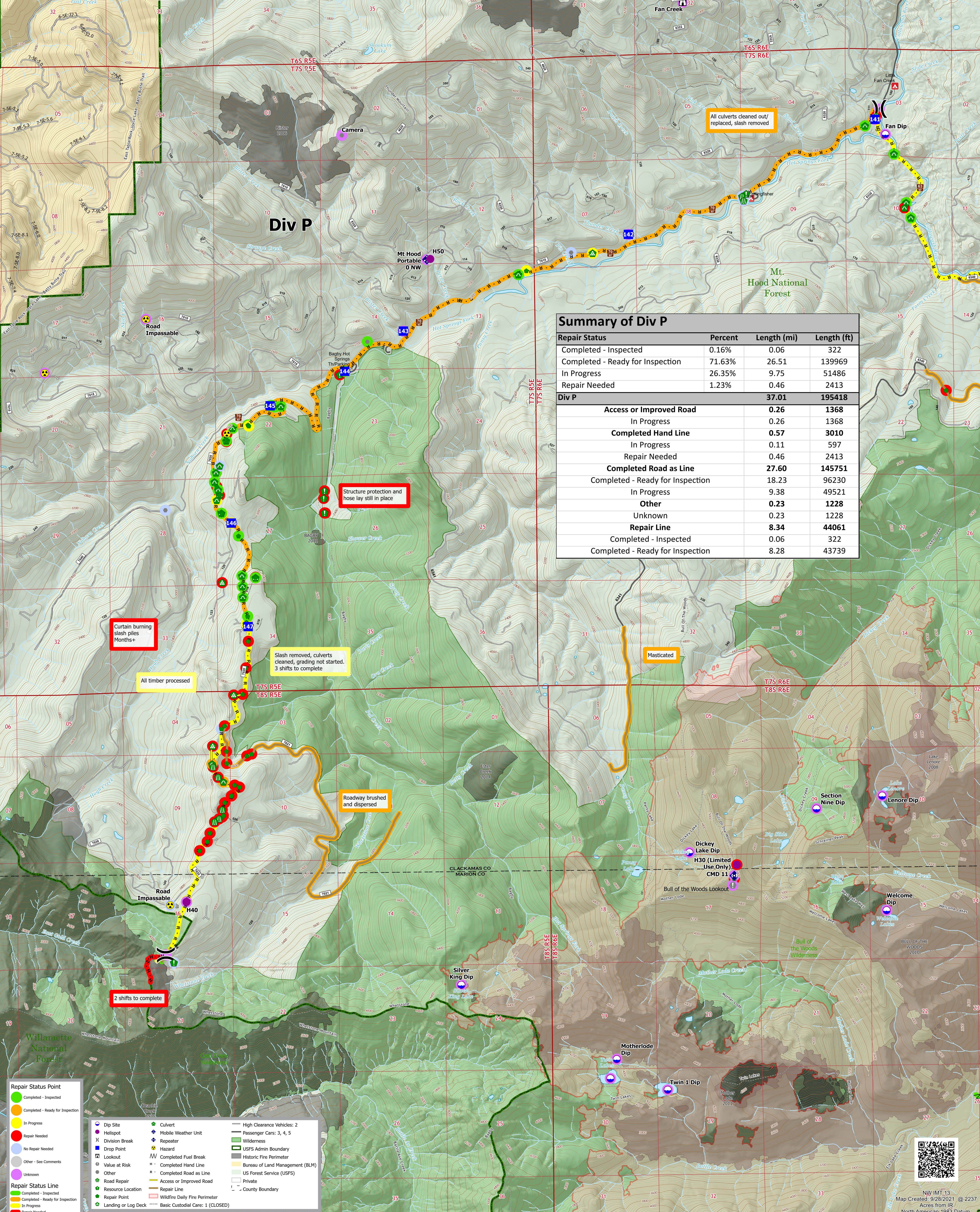


**SUPPRESSION REPAIR**  
**BULL COMPLEX**  
**OR-MHF-000753**  
**9/29/2021 DAY**  
 24,894 ACRES ON 9/25/2021 @ 2004



**Summary of Total Fire** \*does not include NF46

Repair Status	Length (mi)	Percent
Completed - Inspected	16.97	10.99%
Completed - Ready for Inspection	48.07	31.14%
In Progress	41.44	26.84%
Repair Needed	46.42	30.07%
<b>Total Line</b>	<b>154.39</b>	



**Div P**

**Summary of Div P**

Repair Status	Percent	Length (mi)	Length (ft)
Completed - Inspected	0.16%	0.06	322
Completed - Ready for Inspection	71.63%	26.51	139969
In Progress	26.35%	9.75	51486
Repair Needed	1.23%	0.46	2413
<b>Div P</b>		<b>37.01</b>	<b>195418</b>
<b>Access or Improved Road</b>		<b>0.26</b>	<b>1368</b>
In Progress		0.26	1368
<b>Completed Hand Line</b>		<b>0.57</b>	<b>3010</b>
In Progress		0.11	597
Repair Needed		0.46	2413
<b>Completed Road as Line</b>		<b>27.60</b>	<b>145751</b>
Completed - Ready for Inspection		18.23	96230
In Progress		9.38	49521
<b>Other</b>		<b>0.23</b>	<b>1228</b>
Unknown		0.23	1228
<b>Repair Line</b>		<b>8.34</b>	<b>44061</b>
Completed - Inspected		0.06	322
Completed - Ready for Inspection		8.28	43739

Curtain burning slash piles Months+

Slash removed, culverts cleaned, grading not started. 3 shifts to complete

All timber processed

Roadway brushed and dispersed

Masticated

2 shifts to complete

**Repair Status Point**

- Completed - Inspected
- Completed - Ready for Inspection
- In Progress
- Repair Needed
- No Repair Needed
- Other - See Comments
- Unknown

**Repair Status Line**

- Completed - Inspected
- Completed - Ready for Inspection
- In Progress
- Repair Needed

- Dip Site
- Heliport
- Division Break
- Drop Point
- Lookout
- Value at Risk
- Other
- Road Repair
- Resource Location
- Landing or Log Deck
- High Clearance Vehicles: 2
- Passenger Cars: 3, 4, 5
- Wilderness
- USFS Admin Boundary
- Historic Fire Perimeter
- Bureau of Land Management (BLM)
- US Forest Service (USFS)
- Private
- County Boundary
- Completed Fuel Break
- Completed Hand Line
- Completed Road as Line
- Access or Improved Road
- Repair Line
- Wildfire Daily Fire Perimeter
- Basic Custodial Care: 1 (CLOSED)

