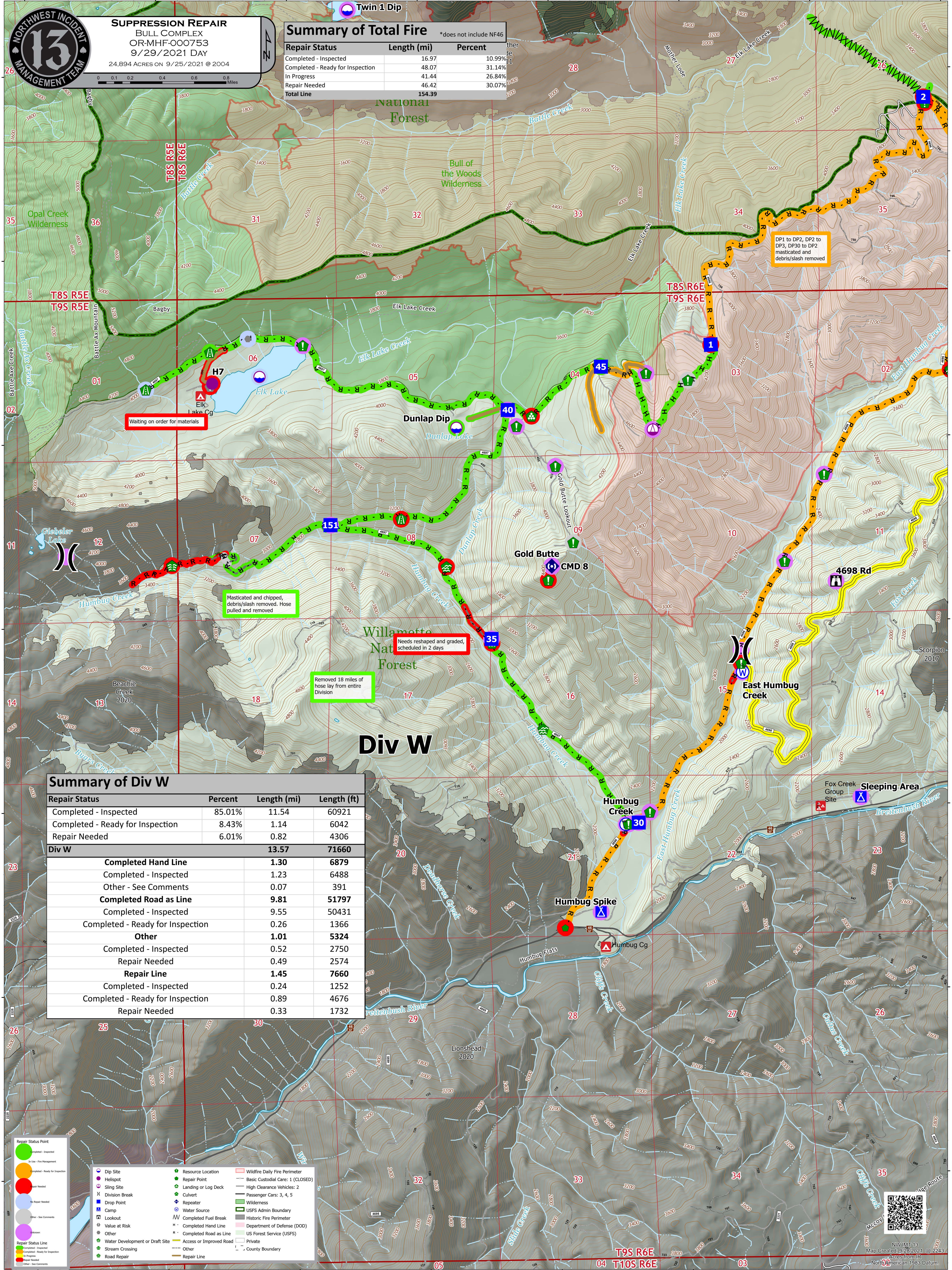




SUPPRESSION REPAIR
BULL COMPLEX
 OR-MHF-000753
 9/29/2021 DAY
 24,894 ACRES ON 9/25/2021 @ 2004

Summary of Total Fire *does not include NF46

Repair Status	Length (mi)	Percent
Completed - Inspected	16.97	10.99%
Completed - Ready for Inspection	48.07	31.14%
In Progress	41.44	26.84%
Repair Needed	46.42	30.07%
Total Line	154.39	



Waiting on order for materials

Masticated and chipped, debris/slash removed. Hose pulled and removed

Needs reshaped and graded, scheduled in 2 days

Removed 18 miles of hose lay from entire Division

DP1 to DP2, DP2 to DP3, DP30 to DP2 masticated and debris/slash removed

Div W

Summary of Div W

Repair Status	Percent	Length (mi)	Length (ft)
Completed - Inspected	85.01%	11.54	60921
Completed - Ready for Inspection	8.43%	1.14	6042
Repair Needed	6.01%	0.82	4306
Div W		13.57	71660
Completed Hand Line		1.30	6879
Completed - Inspected		1.23	6488
Other - See Comments		0.07	391
Completed Road as Line		9.81	51797
Completed - Inspected		9.55	50431
Completed - Ready for Inspection		0.26	1366
Other		1.01	5324
Completed - Inspected		0.52	2750
Repair Needed		0.49	2574
Repair Line		1.45	7660
Completed - Inspected		0.24	1252
Completed - Ready for Inspection		0.89	4676
Repair Needed		0.33	1732

Repair Status Point

- Completed - Inspected
- Ready for Inspection
- In Progress
- Repair Needed
- Other - See Comments

Legend

- Dip Site
- Helispot
- Sling Site
- Division Break
- Drop Point
- Camp
- Lookout
- Value at Risk
- Other
- Water Development or Draft Site
- Stream Crossing
- Road Repair
- Resource Location
- Repair Point
- Landing or Log Deck
- Culvert
- Repeater
- Water Source
- Completed Fuel Break
- Completed Hand Line
- Completed Road as Line
- Access or Improved Road
- Other
- Repair Line
- Wildfire Daily Fire Perimeter
- Basic Custodial Care: 1 (CLOSED)
- High Clearance Vehicles: 2
- Passenger Cars: 3, 4, 5
- Culvert
- Wilderness
- USFS Admin Boundary
- Historic Fire Perimeter
- Department of Defense (DOD)
- US Forest Service (USFS)
- Private
- County Boundary

