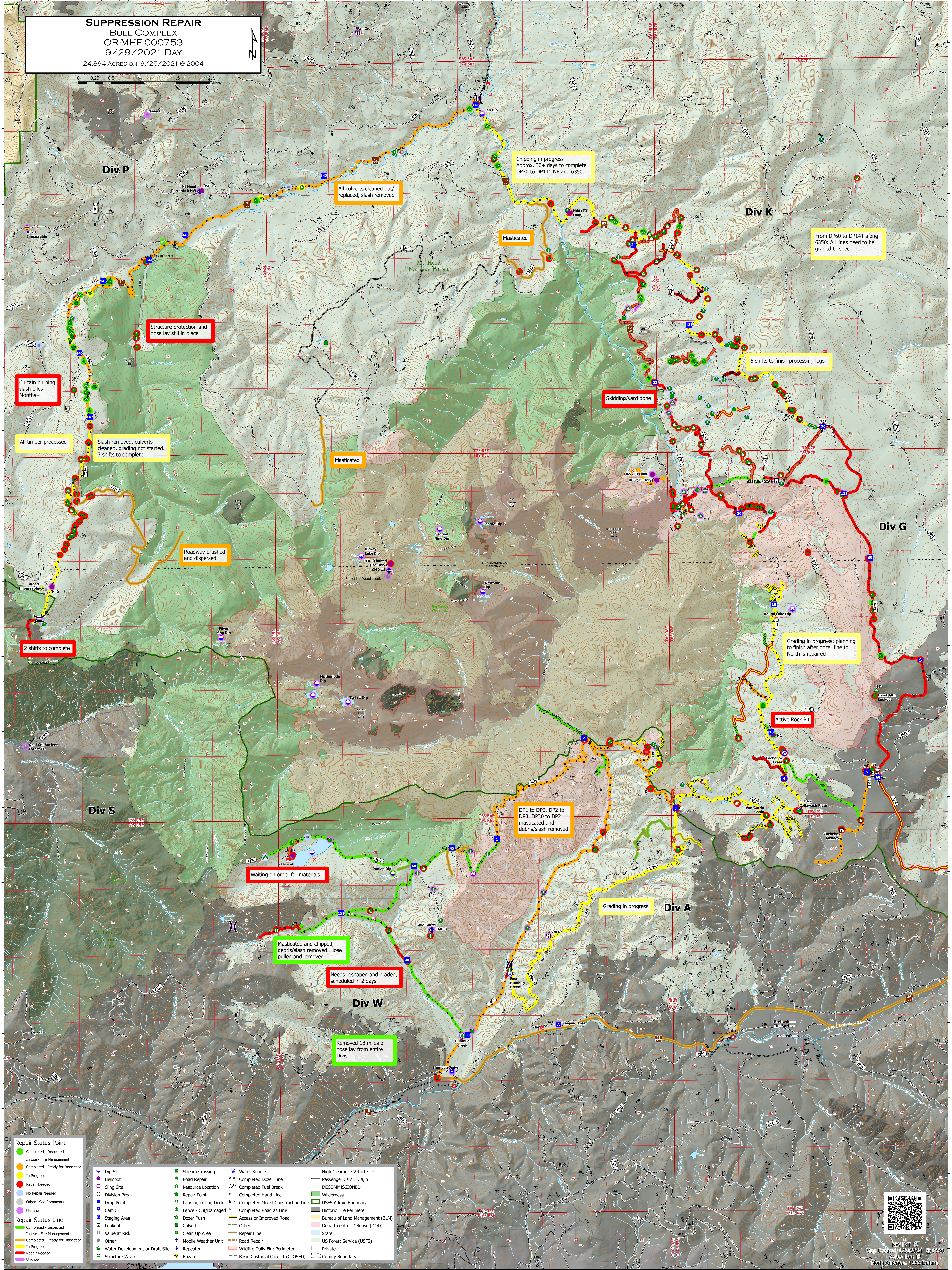
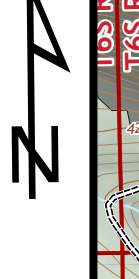


**SUPPRESSION REPAIR
BULL COMPLEX
OR-MHF-000753
9/29/2021 DAY**

24,894 ACRES ON 9/25/2021 @ 2004

0 0.25 0.5 1 1.5 Miles



Curtain burning slash piles
Months+

All timber processed

Structure protection and hose lay still in place

Slash removed, culverts cleaned, grading not started. 3 shifts to complete

All culverts cleaned out/replaced, slash removed

Chipping in progress
Approx. 30+ days to complete
DP70 to DP141 NF and 6350

Masticated

From DP60 to DP141 along 6350: All lines need to be graded to spec

5 shifts to finish processing logs

Skidding/yard done

Masticated

Roadway brushed and dispersed

2 shifts to complete

Grading in progress; planning to finish after dozer line to North is repaired

Active Rock Pit

DP1 to DP2, DP2 to DP3, DP30 to DP2 masticated and debris/slash removed

Grading in progress

Waiting on order for materials

Masticated and chipped, debris/slash removed. Hose pulled and removed

Needs reshaped and graded, scheduled in 2 days

Removed 18 miles of hose lay from entire Division

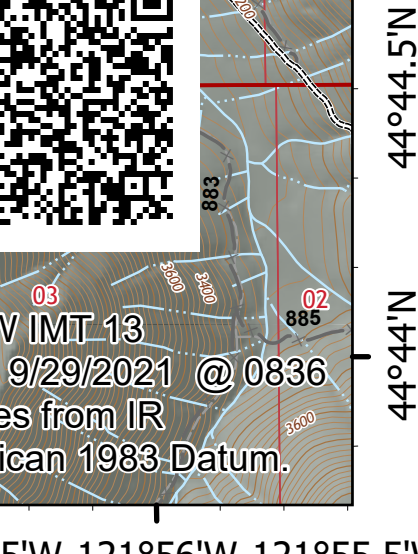
Repair Status Point

- Completed - Inspected
- In Use - Fire Management
- Completed - Ready for Inspection
- In Progress
- Repair Needed
- No Repair Needed
- Other - See Comments
- Unknown

Repair Status Line

- Completed - Inspected
- In Use - Fire Management
- Completed - Ready for Inspection
- In Progress
- Repair Needed
- Unknown

Dip Site	Stream Crossing	Water Source	High Clearance Vehicles: 2
Heliport	Road Repair	Completed Dozer Line	Passenger Cars: 3, 4, 5
Sling Site	Resource Location	Completed Fuel Break	DECOMMISSIONED
Division Break	Repair Point	Completed Hand Line	Wilderness
Drop Point	Fencing or Log Deck	Completed Mixed Construction Line	USFS Admin Boundary
Camp	Land - Cut/Damaged	Completed Road as Line	Historic Fire Perimeter
Staging Area	Dozer Push	Access or Improved Road	Bureau of Land Management (BLM)
Lookout	Culvert	Other	Department of Defense (DOD)
Value at Risk	Clean Up Area	Repair Line	State
Other	Mobile Weather Unit	Road Repair	US Forest Service (USFS)
Water Development or Draft Site	Repeater	Wildfire Daily Fire Perimeter	Private
Structure Wrap	Hazard	Basic Custodial Care: 1 (CLOSED)	County Boundary



NW 1/4-1/4
Map Created 9/29/2021 @ 0836
Acres from IR
North American 1983 Datum