

BRIEFING

BULL COMPLEX

OR-MHF-000753

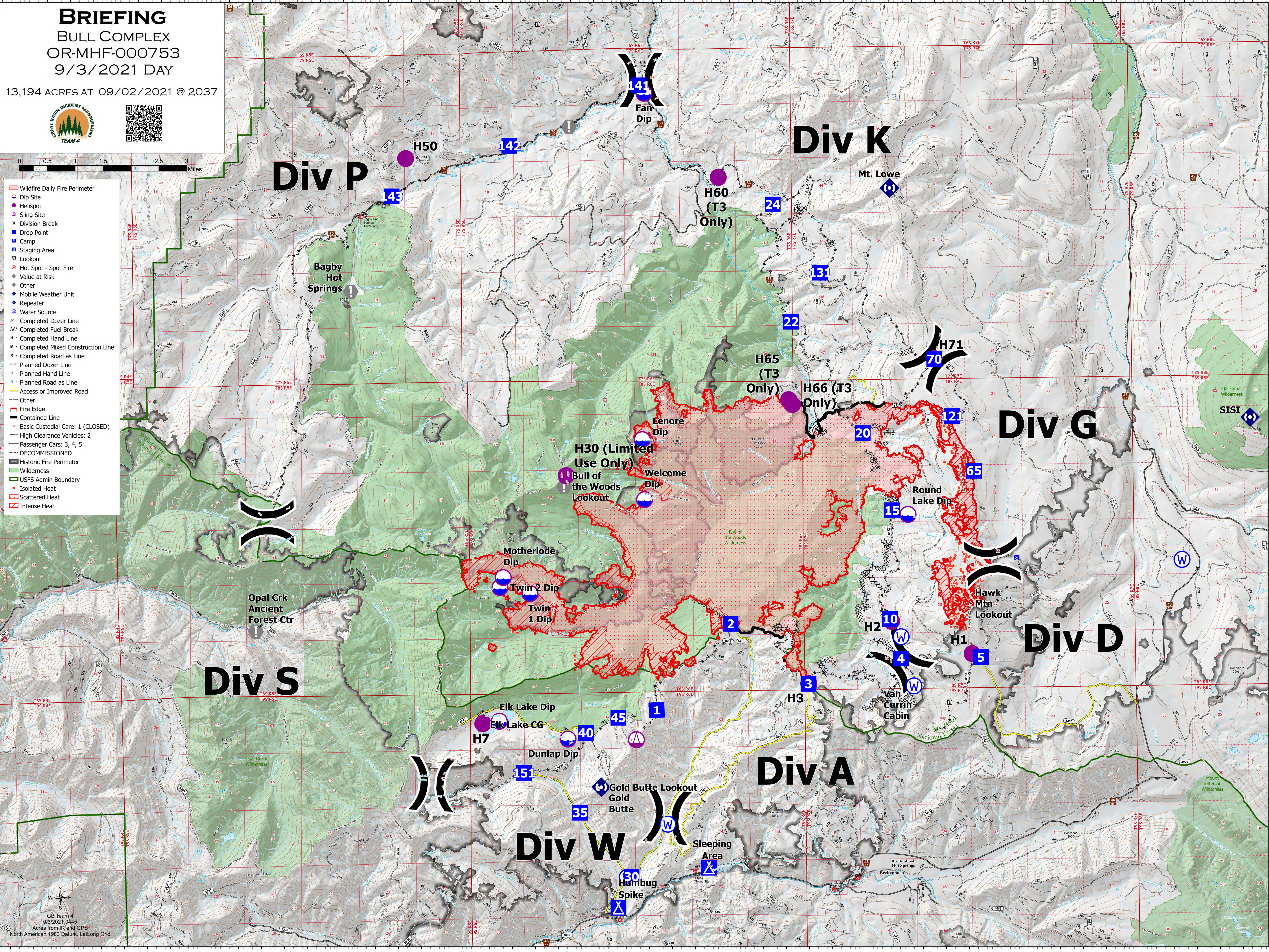
9/3/2021 DAY

13,194 ACRES AT 09/02/2021 @ 2037



- Wildfire Daily Fire Perimeter
- Dip Site
- Helispot
- Sling Site
- Division Break
- Drop Point
- Camp
- Staging Area
- Lookout
- Hot Spot - Spot Fire
- Value at Risk
- Other
- Mobile Weather Unit
- Repeater
- Water Source
- Completed Dozer Line
- Completed Fuel Break
- Completed Hand Line
- Completed Mixed Construction Line
- Completed Road as Line
- Planned Dozer Line
- Planned Hand Line
- Planned Road as Line
- Access or Improved Road
- Other
- Fire Edge
- Contained Line
- Basic Custodial Care: 1 (CLOSED)
- High Clearance Vehicles: 2
- Passenger Cars: 3, 4, 5
- DECOMMISSIONED
- Historic Fire Perimeter
- Wilderness
- USFS Admin Boundary
- Isolated Heat
- Scattered Heat
- Intense Heat

GB Team 4
9/3/2021 0445
Acres from IR and GPS
North American 1983 Datum, Lat/Long Grid



Bull Complex Incident General Weather Outlook

For Planning Purposes Only, see the IAP for the Official Forecast

Forecast made Thursday September 2, 2021 - IMET Jon Pelton

Day	Fri	Sat	Sun	Mon	Tue	Wed
	3-Sep	4-Sep	5-Sep	6-Sep	7-Sep	8-Sep
Clouds @ 1500 (%)	30	20	10	25	35	30
Avg. Max Temp (F)	79	79	78	82	83	75
Precip Chance (%)	0	0	0	0	5	20
LAL	1	1	1	1	1	1
Ridge Wind (mph)	7	9	10	7	8	10
Wind Direction*	ENE>NNW	WSW	W	NW	WNW	W
Min Humidity (%)	18	21	32	28	25	45
Haines Index	4	3	3	4	3	3

KEY:	Moderate Burning Conditions	Take Caution - Critical Burning Conditions	Extreme Burning Conditions
Clouds	>30%	20 to 30	<20%
Avg Max Temp	<75F	75 to 80	>80F
Precip Chance	>49%	15 to 49	<15%
LAL	< 5	5	> 5
Ridge Wind	<10mph	10 to 15	>15mph
*Wind Direction	Criticality of wind direction highly dependent on burn operations and/or structures threatened		
Min Humidity	>34%	25 to 34	<25%
Haines Index	< 4	5	6

Five or more EXTREME blocks in a day equals the potential for a Critical Weather Day

This forecast matrix was developed for the Bull Complex Wildfire and uses criteria specific for this incident. Every incident will respond to conditions differently and adjustments to the formulas and or categories used may be needed.