

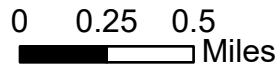
OPS DIV E

Bull Complex

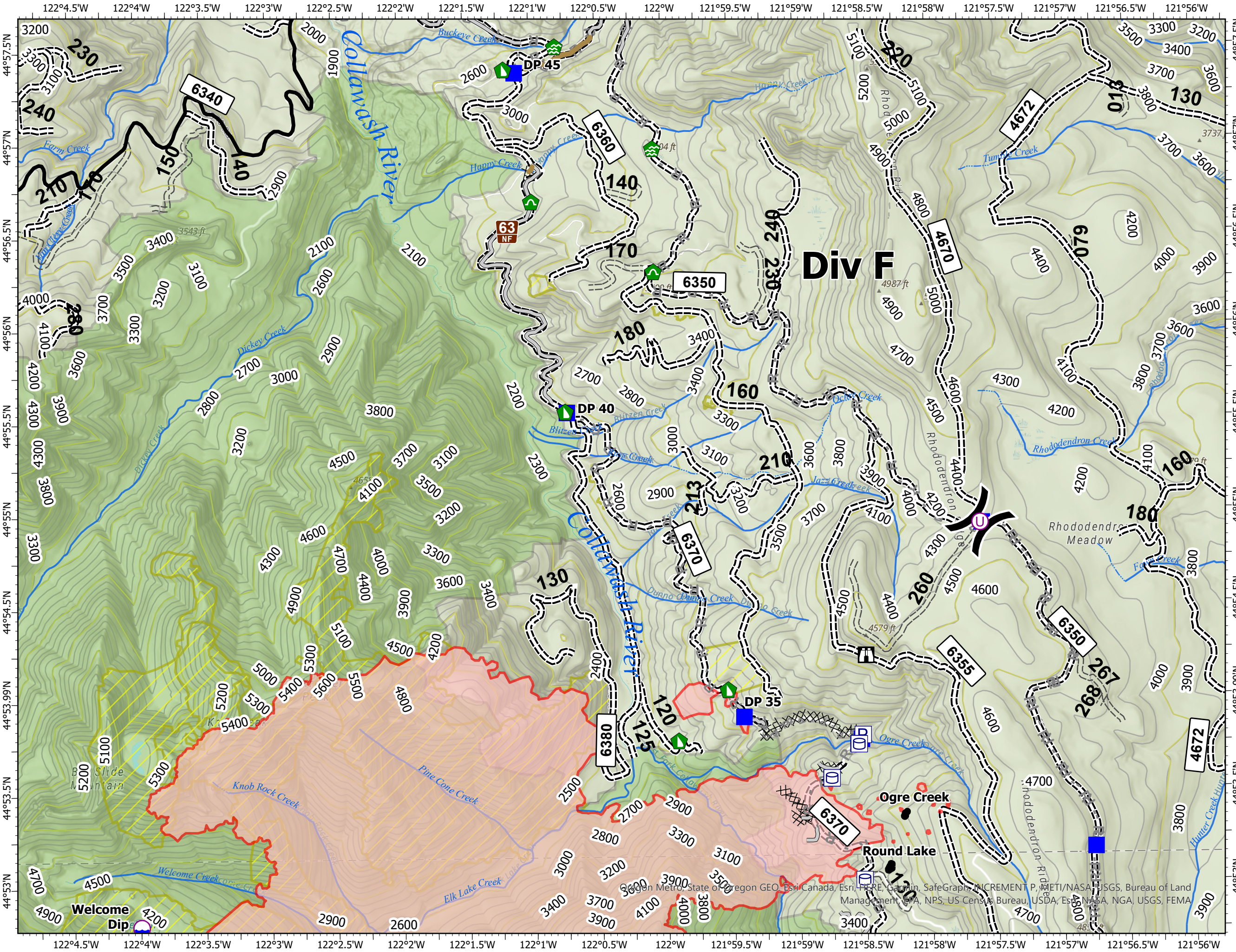
OR-MHF-000753

8/18/2021

Approx 5120 acres at 8/16/2021 2133



- Event Point
 - Dip Site
 - Unimproved Landing Area
 - X Division Break
 - Drop Point
 - ⊠ Closure
 - ⊠ Lookout
 - Hot Spot - Spot Fire
 - Water Development or Draft Site
 - ▲ Dozer Push
 - ▲ Culvert
- Event Polygon
 - Wildfire Daily Fire Perimeter
- Accountable Property
 - Pump
 - Water Tank
- Event Line
 - X Completed Dozer Line
 - H Completed Hand Line
 - P Planned Plow Line
 - R Planned Road as Line
 - Access or Improved Road
 - Repair Line
 - Road Repair
 - Contained Line
- Wilderness
 - Wilderness
- Historic Fire Perimeter
 - Historic Fire Perimeter
- USFS Admin Boundary
 - USFS Admin Boundary
- US Forest Service Roads
 - 1 - Basic Custodial Care (CLOSED)
 - 2 - High Clearance Vehicles
 - 3 - Suitable for Passenger Cars



TCLAPP
8/18/2021 0436
Acres from IR
North American 1983 Datum.
LatLong Grid

© 2021 Esri, DeLorme, State of Oregon GEO, Esri, Canada, Esri, HERE, Garmin, SafeGraph, INCREMENT P, METI/NASA, USGS, Bureau of Land Management, EPA, NPS, US Census Bureau, USDA, Esri, NASA, NGA, USGS, FEMA