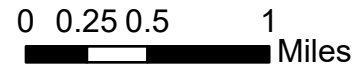


# OPS DIV F

Bull Complex  
OR-MHF-000753  
8/18/2021

Approx 5120 acres at 8/16/2021 2133



- Event Point
  - Dip Site
  - Unimproved Landing Area
  - Division Break
  - Drop Point
  - Closure
  - Lookout
  - Hot Spot - Spot Fire
  - Value at Risk
  - Water Development or Draft Site
  - Dozer Push
  - Culvert
  - Hazard

- Event Polygon
  - Wildfire Daily Fire Perimeter

- Accountable Property
  - Pump
  - Water Tank

- Event Line
  - Completed Dozer Line
  - Completed Hand Line
  - Planned Plow Line
  - Planned Road as Line
  - Access or Improved Road
  - Repair Line
  - Road Repair
  - Contained Line

- USFS Admin Boundary
  - USFS Admin Boundary

- Wilderness
  - Wilderness

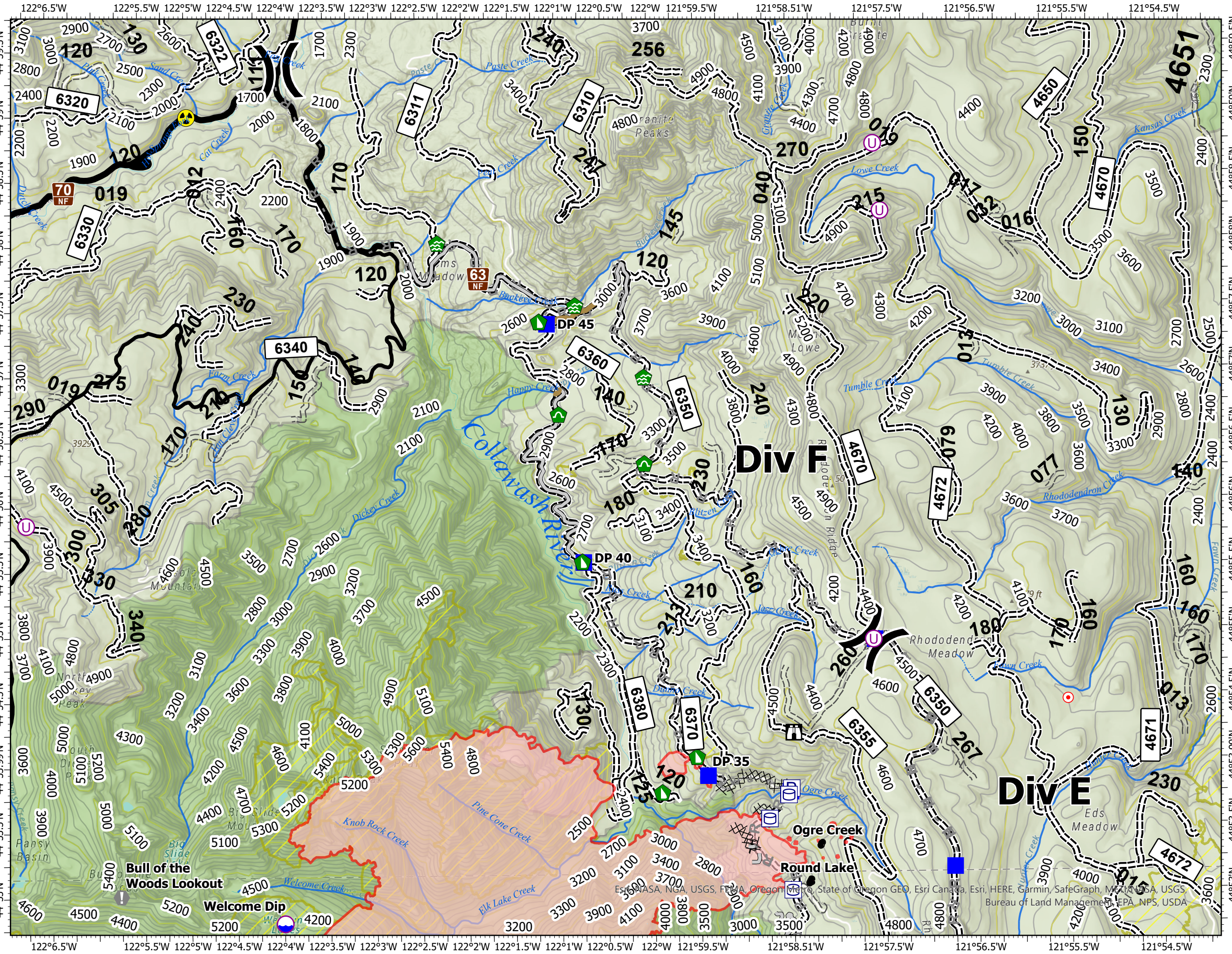
- Historic Fire Perimeter
  - Historic Fire Perimeter

- USFS Admin Boundary
  - USFS Admin Boundary

- US Forest Service Roads
  - 1 - Basic Custodial Care (CLOSED)
  - 2 - High Clearance Vehicles
  - 3 - Suitable for Passenger Cars
  - 4 - Moderate Degree of User Comfort



TCLAPP  
8/18/2021 0438  
Acres from IR  
North American 1983 Datum.  
LatLong Grid



Esri, NASA, NGA, USGS, FEMA, Oregon Metro, State of Oregon GEO, Esri Canada, Esri, HERE, Garmin, SafeGraph, Mapbox, USA, USGS, Bureau of Land Management, EPA, NPS, USDA