

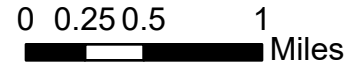
OPS DIV W

Bull Complex

OR-MHF-000753

8/18/2021

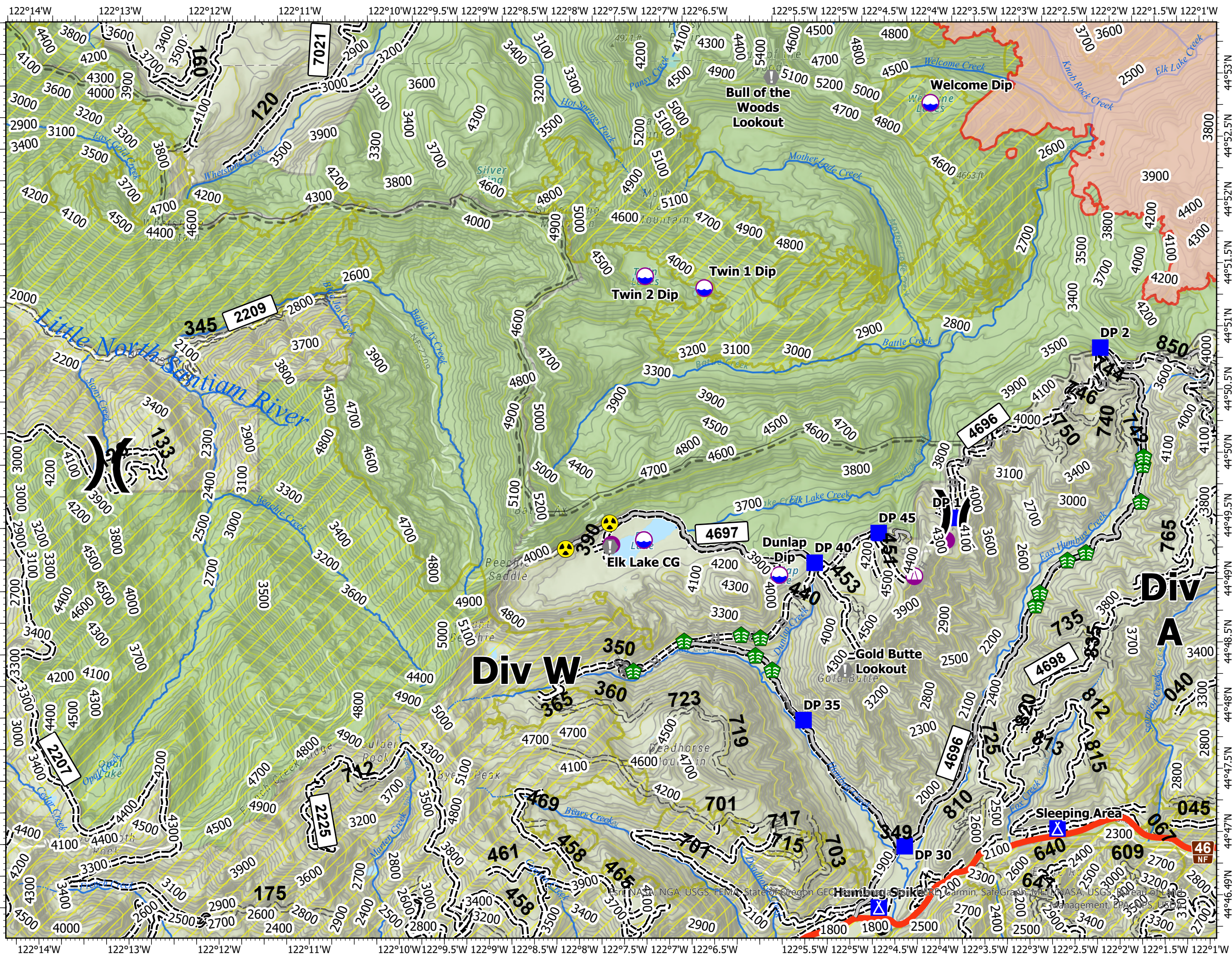
Approx 5120 acres at 8/16/2021 2133



- Event Point**
- Dip Site
 - Helispot
 - Sling Site
 - Division Break
 - Drop Point
 - Camp
 - Value at Risk
 - Stream Crossing
 - Hazard
- Event Polygon**
- Wildfire Daily Fire Perimeter
- Event Line**
- Completed Dozer Line
 - Completed Hand Line
 - Planned Dozer Line
 - Planned Hand Line
 - Planned Road as Line
 - Access or Improved Road
 - Other
- Wilderness**
- Wilderness
- Historic Fire Perimeter**
- Historic Fire Perimeter
- USFS Admin Boundary**
- USFS Admin Boundary
- US Forest Service Roads**
- 1 - Basic Custodial Care (CLOSED)
 - 2 - High Clearance Vehicles
 - 3 - Suitable for Passenger Cars
 - 5 - High Degree of User Comfort



TCLAPP
8/18/2021 0447
Acres from IR
North American 1983 Datum.
LatLong Grid



Map data provided by Esri, NASA, NGA, USGS, FEMA, State of Oregon, GEC, Humboldt State University, Garmin, SafeGraph, METI, NASA, USGS, Bureau of Land Management, EPA, OPS, USFS