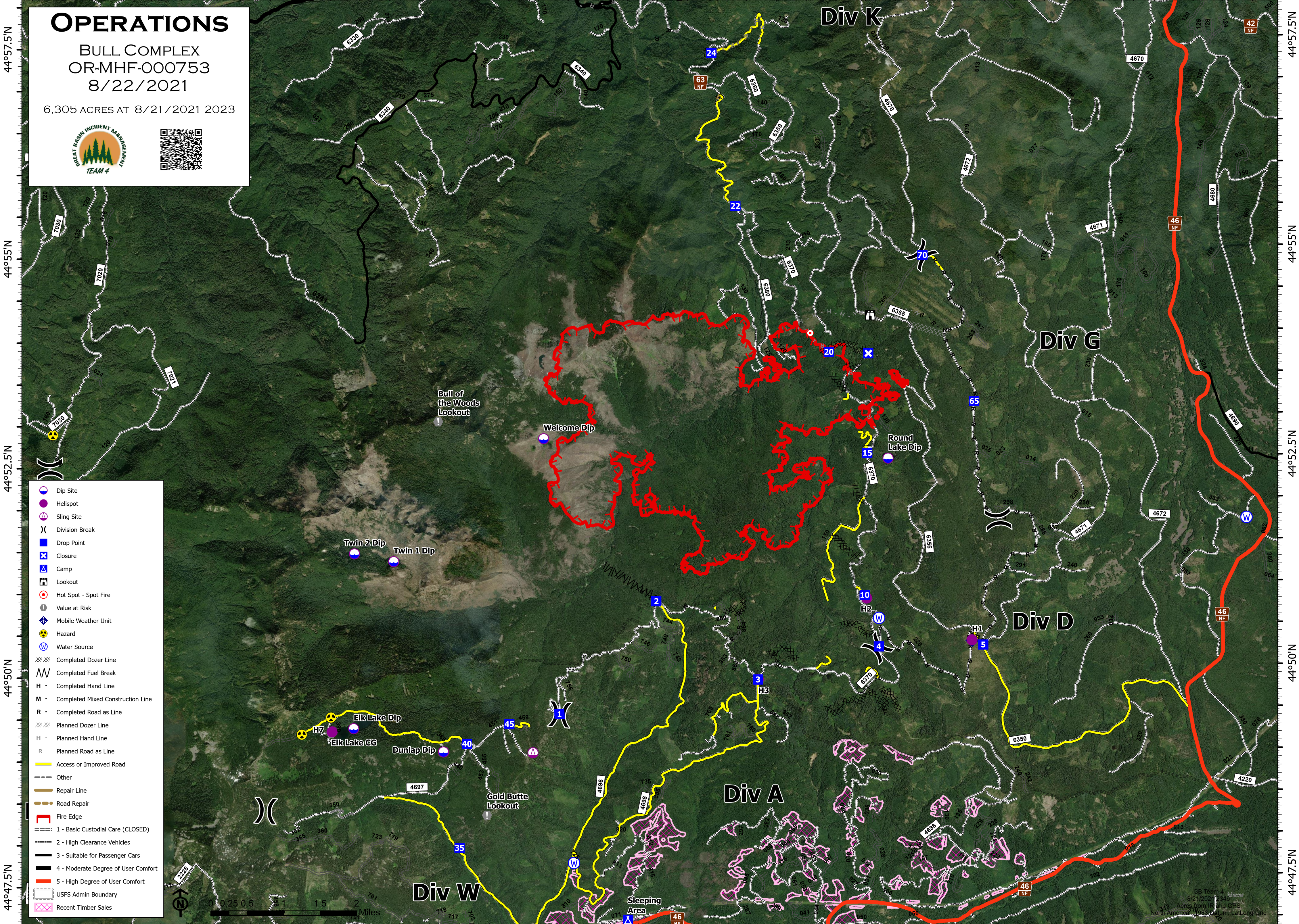


122°12.5'W 122°10'W 122°7.5'W 122°5'W 122°2.5'W 122°W 121°57.5'W 121°55'W 121°52.5'W



# OPERATIONS

BULL COMPLEX  
OR-MHF-000753  
8/22/2021

6,305 ACRES AT 8/21/2021 2023



- Dip Site
- Helispot
- Sling Site
- Division Break
- Drop Point
- Closure
- Camp
- Lookout
- Hot Spot - Spot Fire
- Value at Risk
- Mobile Weather Unit
- Hazard
- Water Source
- Completed Dozer Line
- Completed Fuel Break
- Completed Hand Line
- Completed Mixed Construction Line
- Completed Road as Line
- Planned Dozer Line
- Planned Hand Line
- Planned Road as Line
- Access or Improved Road
- Other
- Repair Line
- Road Repair
- Fire Edge
- 1 - Basic Custodial Care (CLOSED)
- 2 - High Clearance Vehicles
- 3 - Suitable for Passenger Cars
- 4 - Moderate Degree of User Comfort
- 5 - High Degree of User Comfort
- USFS Admin Boundary
- Recent Timber Sales



122°12.5'W 122°10'W 122°7.5'W 122°5'W 122°2.5'W 122°W 121°57.5'W 121°55'W 121°52.5'W

44°57.5'N  
44°55'N  
44°52.5'N  
44°50'N  
44°47.5'N

44°57.5'N  
44°55'N  
44°52.5'N  
44°50'N  
44°47.5'N

Div K

Div G

Div D

Div A

Div W

Bull of the Woods Lookout

Welcome Dip

Round Lake Dip

Twin 2 Dip

Twin 1 Dip

Elk Lake Dip

Elk Lake GG

Dunlap Dip

Gold Butte Lookout

Sleeping Area

GB Team 4  
8/21/2021 2348  
443 Acres from US and GPS  
North American 1983 Datum, Lat/Long Grid