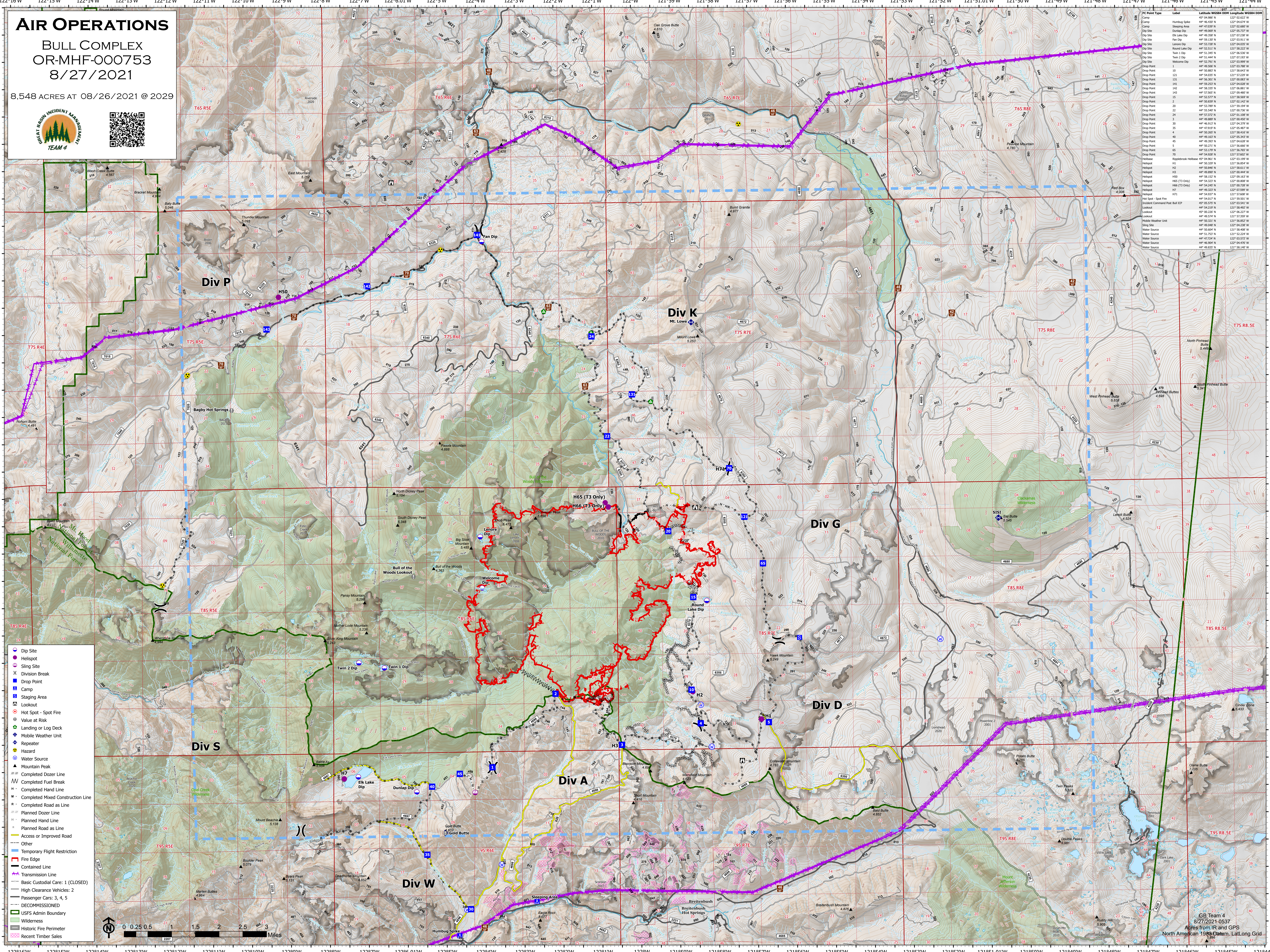


AIR OPERATIONS

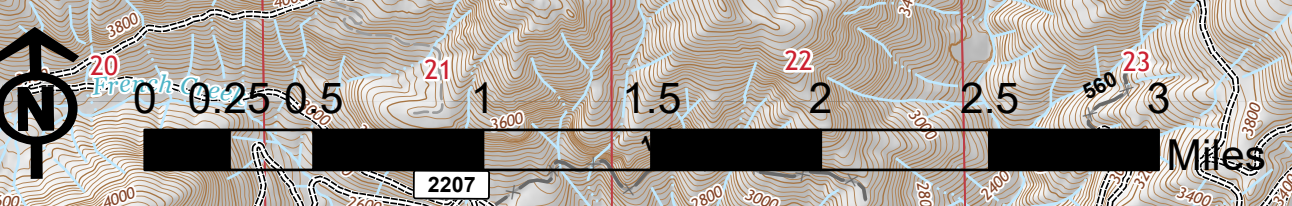
BULL COMPLEX
OR-MHF-000753
8/27/2021

8,548 ACRES AT 08/26/2021 @ 2029



FC Point Type	Label	Latitude	Longitude	Notes
Camp	Humbog Spine	44° 54.937' N	122° 04.614' W	
Camp	Clawson Dip	44° 54.969' N	122° 05.737' W	
Dip Site	Elk Lake Dip	44° 53.200' N	122° 03.381' W	
Dip Site	Paradise Dip	44° 53.726' N	122° 04.833' W	
Dip Site	Round Lake Dip	44° 53.521' N	122° 05.222' W	
Dip Site	Twin 1 Dip	44° 51.945' N	122° 06.536' W	
Dip Site	Twin 2 Dip	44° 51.444' N	122° 07.183' W	
Dip Point	Wellstone Dip	44° 52.729' N	122° 03.999' W	
Dip Point	121	44° 54.031' N	121° 53.229' W	
Dip Point	131	44° 56.301' N	122° 06.887' W	
Dip Point	141	44° 58.325' N	122° 08.881' W	
Dip Point	142	44° 58.325' N	122° 08.881' W	
Dip Point	143	44° 57.568' N	122° 08.487' W	
Dip Point	143	44° 58.859' N	122° 05.142' W	
Dip Point	143	44° 53.726' N	122° 04.833' W	
Dip Point	22	44° 55.440' N	122° 00.736' W	
Dip Point	24	44° 53.722' N	122° 05.108' W	
Dip Point	3	44° 56.889' N	122° 06.882' W	
Dip Point	30	44° 46.817' N	122° 04.379' W	
Dip Point	35	44° 47.913' N	122° 05.222' W	
Dip Point	4	44° 50.803' N	121° 58.416' W	
Dip Point	46	44° 49.167' N	122° 05.347' W	
Dip Point	5	44° 52.711' N	121° 56.666' W	
Dip Point	65	44° 53.729' N	122° 04.833' W	
Dip Point	70	44° 54.828' N	121° 57.602' W	
Helispot	Rabbitbrook Helispot	45° 04.961' N	122° 03.199' W	
Helispot	H1	44° 52.729' N	122° 03.999' W	
Helispot	H2	44° 50.846' N	121° 58.611' W	
Helispot	H3	44° 49.889' N	122° 06.882' W	
Helispot	H100	44° 56.152' N	122° 09.167' W	
Helispot	H65 (T3 Only)	44° 54.327' N	122° 06.887' W	
Helispot	H65 (T3 Only)	44° 53.726' N	122° 04.833' W	
Helispot	H7	44° 49.227' N	122° 07.599' W	
Helispot	H71	44° 54.937' N	122° 03.381' W	
Hot Spot - Spot Fire	H71	44° 54.937' N	122° 03.381' W	
Hot Spot - Spot Fire	Incident Command Post Bull KP	45° 03.575' N	122° 03.541' W	
Lookout	Lookout	45° 03.206' N	121° 06.227' W	
Lookout	Lookout	44° 49.574' N	121° 53.209' W	
Mobile Weather Unit	Mobile Weather Unit	44° 49.048' N	122° 04.238' W	
Slip Site	Slip Site	44° 55.065' N	122° 08.487' W	
Water Source	Water Source	44° 51.753' N	121° 53.224' W	
Water Source	Water Source	44° 47.224' N	122° 03.572' W	
Water Source	Water Source	44° 46.909' N	122° 04.492' W	
Water Source	Water Source	44° 49.833' N	121° 58.149' W	

- Dip Site
- Helispot
- Sling Site
- Division Break
- Drop Point
- Camp
- Staging Area
- Lookout
- Hot Spot - Spot Fire
- Value at Risk
- Landing or Log Deck
- Mobile Weather Unit
- Repeater
- Hazard
- Water Source
- Mountain Peak
- Completed Dozer Line
- Completed Fuel Break
- Completed Hand Line
- Completed Mixed Construction Line
- Completed Road as Line
- Planned Dozer Line
- Planned Hand Line
- Planned Road as Line
- Access or Improved Road
- Other
- Temporary Flight Restriction
- Fire Edge
- Contained Line
- Transmission Line
- Basic Custodial Care: 1 (CLOSED)
- High Clearance Vehicles: 2
- Passenger Cars: 3, 4, 5
- DECOMMISSIONED
- USFS Admin Boundary
- Wilderness
- Historic Fire Perimeter
- Recent Timber Sales



GB Team 4
8/27/2021-0537
Acres from IR and GPS
North American 1983 Datum, Lat/Long Grid