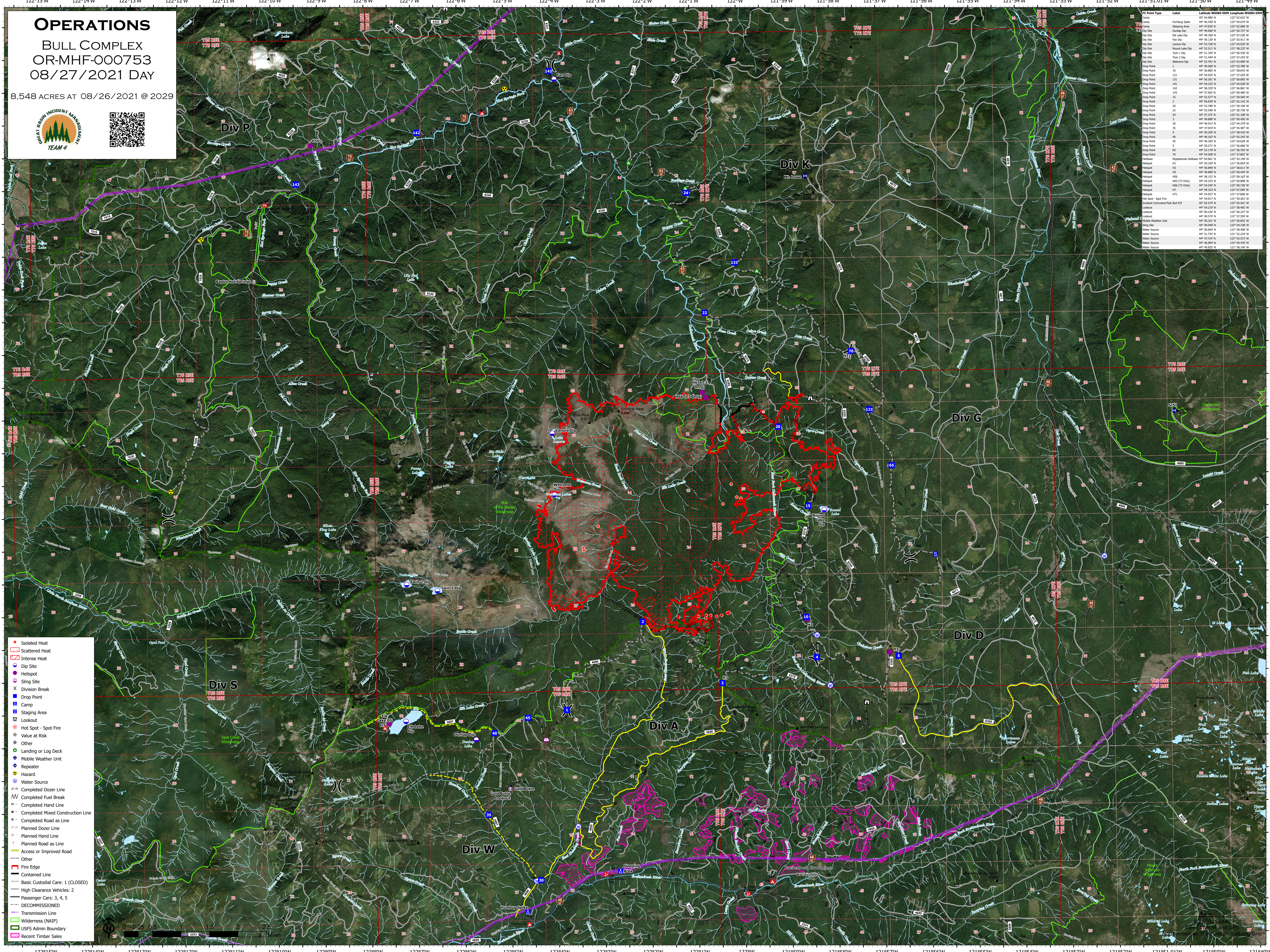


OPERATIONS

BULL COMPLEX
OR-MHF-000753
08/27/2021 DAY

8,548 ACRES AT 08/26/2021 @ 2029



- Isolated Heat
- Scattered Heat
- Intense Heat
- Dip Site
- Helispot
- Sling Site
- Division Break
- Drop Point
- Camp
- Staging Area
- Lookout
- Hot Spot - Spot Fire
- Value at Risk
- Other
- Landing or Log Deck
- Mobile Weather Unit
- Repeater
- Hazard
- Water Source
- Completed Dozer Line
- Completed Fuel Break
- Completed Hand Line
- Completed Mixed Construction Line
- Completed Road as Line
- Planned Dozer Line
- Planned Hand Line
- Planned Road as Line
- Access or Improved Road
- Other
- Fire Edge
- Contained Line
- Basic Custodial Care: 1 (CLOSED)
- High Clearance Vehicles: 2
- Passenger Cars: 3, 4, 5
- DECOMMISSIONED
- Transmission Line
- Wilderness (NAIP)
- USFS Admin Boundary
- Recent Timber Sales

FC Point Type	Label	Latitude WGS84	Longitude WGS84
Camp	Humburg Site	44° 46.537' N	121° 04.614' W
Camp	Staging Area	44° 46.728' N	121° 05.687' W
Dip Site	Dunlap Dip	44° 46.669' N	121° 05.737' W
Dip Site	Elk Lake Dip	44° 46.350' N	121° 03.338' W
Dip Site	Paul Dip	44° 46.329' N	121° 03.811' W
Dip Site	Lenore Dip	44° 45.728' N	121° 04.833' W
Dip Site	Round Lake Dip	44° 45.253' N	121° 03.232' W
Dip Site	Twin 1 Dip	44° 45.145' N	121° 06.536' W
Dip Site	Twin 2 Dip	44° 45.144' N	121° 07.183' W
Dip Site	Welcome Dip	44° 45.270' N	121° 03.999' W
Drop Point	1	44° 45.006' N	121° 03.788' W
Drop Point	10	44° 45.083' N	121° 05.643' W
Drop Point	131	44° 46.361' N	121° 06.883' W
Drop Point	141	44° 46.322' N	121° 06.838' W
Drop Point	142	44° 46.335' N	121° 06.881' W
Drop Point	143	44° 45.706' N	121° 06.402' W
Drop Point	15	44° 45.577' N	121° 08.569' W
Drop Point	2	44° 46.839' N	121° 03.142' W
Drop Point	20	44° 45.728' N	121° 03.194' W
Drop Point	22	44° 45.540' N	121° 06.736' W
Drop Point	24	44° 45.732' N	121° 03.108' W
Drop Point	3	44° 46.869' N	121° 06.402' W
Drop Point	30	44° 46.817' N	121° 04.279' W
Drop Point	32	44° 47.939' N	121° 05.487' W
Drop Point	4	44° 46.265' N	121° 08.416' W
Drop Point	46	44° 46.163' N	121° 05.347' W
Drop Point	5	44° 46.271' N	121° 06.666' W
Drop Point	65	44° 45.278' N	121° 06.262' W
Drop Point	70	44° 44.828' N	121° 07.602' W
Helispot	Helispot	44° 46.322' N	121° 05.199' W
Helispot	H2	44° 46.846' N	121° 05.894' W
Helispot	H3	44° 46.869' N	121° 06.444' W
Helispot	H100	44° 46.152' N	121° 09.163' W
Helispot	H65 (T1 Only)	44° 44.323' N	121° 06.808' W
Helispot	H65 (T2 Only)	44° 44.262' N	121° 06.238' W
Helispot	H7	44° 46.223' N	121° 07.599' W
Helispot	H71	44° 45.927' N	121° 07.183' W
Hot Spot - Spot Fire	H71	44° 45.927' N	121° 09.501' W
Incident Command Post Bull ICP	ICP	44° 45.577' N	121° 03.541' W
Lookout	Lookout	44° 45.278' N	121° 06.262' W
Lookout	Lookout	44° 45.278' N	121° 06.262' W
Lookout	Lookout	44° 45.278' N	121° 06.262' W
Mobile Weather Unit	Mobile Weather Unit	44° 45.577' N	121° 03.541' W
Sling Site	Sling Site	44° 46.048' N	121° 04.238' W
Water Source	Water Source	44° 45.006' N	121° 06.402' W
Water Source	Water Source	44° 47.224' N	121° 03.572' W
Water Source	Water Source	44° 46.909' N	121° 04.492' W
Water Source	Water Source	44° 48.823' N	121° 08.140' W

