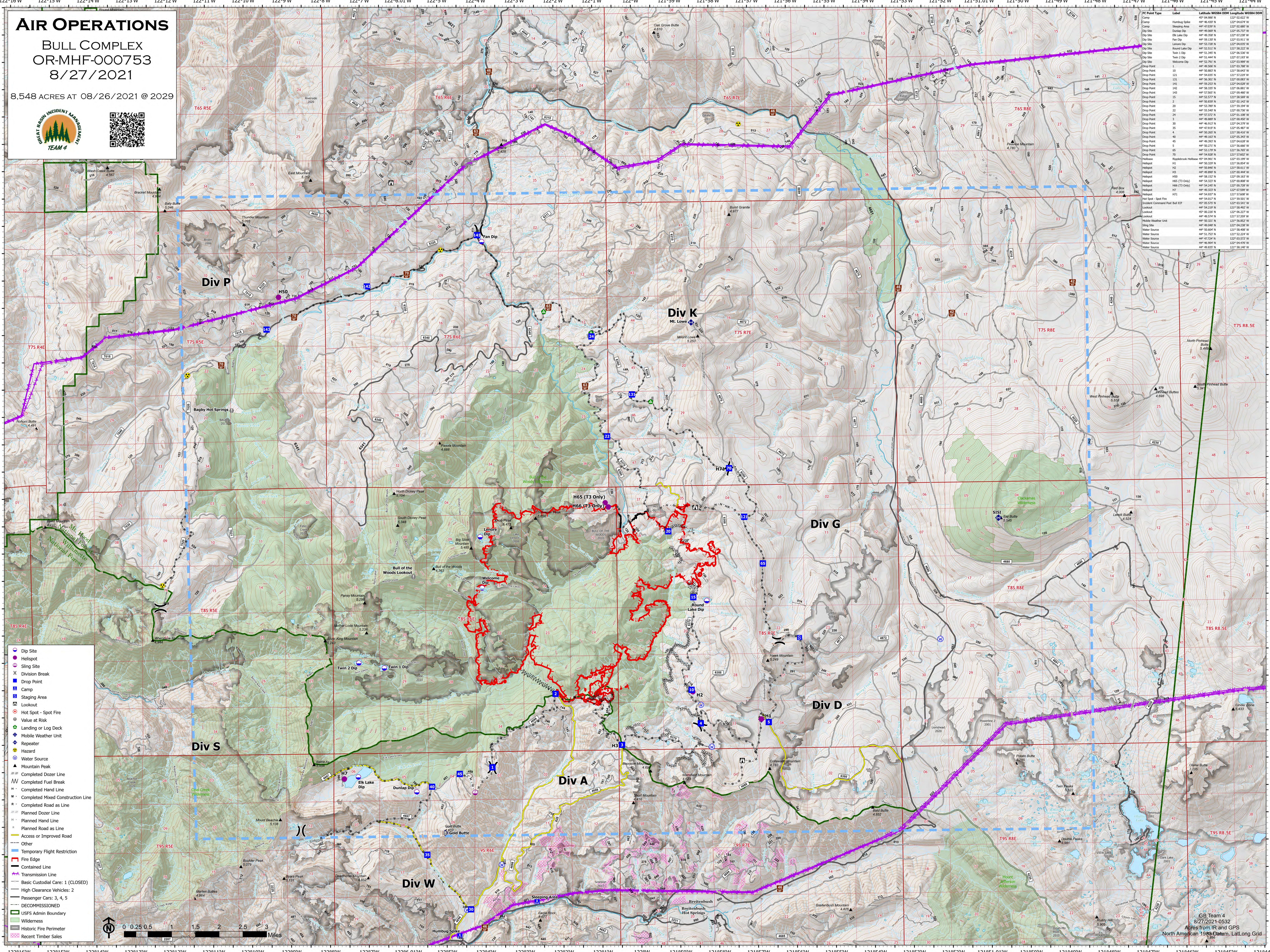


# AIR OPERATIONS

BULL COMPLEX  
OR-MHF-000753  
8/27/2021

8,548 ACRES AT 08/26/2021 @ 2029



| PC Point Type                  | Label          | Latitude      | Longitude      | Notes |
|--------------------------------|----------------|---------------|----------------|-------|
| Camp                           | Humbog Spoke   | 44° 51.937' N | 122° 04.674' W |       |
| Camp                           | Watershed      | 44° 51.937' N | 122° 04.687' W |       |
| Dip Site                       | Dunlap Dip     | 44° 50.609' N | 122° 05.737' W |       |
| Dip Site                       | Elk Lake Dip   | 44° 50.300' N | 122° 03.280' W |       |
| Dip Site                       | Round Lake Dip | 44° 51.720' N | 122° 04.833' W |       |
| Dip Site                       | Round Lake Dip | 44° 51.523' N | 122° 04.222' W |       |
| Dip Site                       | Twin 1 Dip     | 44° 51.345' N | 122° 06.536' W |       |
| Dip Site                       | Twin 2 Dip     | 44° 51.444' N | 122° 07.187' W |       |
| Dip Point                      | Watershed Dip  | 44° 50.500' N | 122° 03.788' W |       |
| Drop Point                     | 1              | 44° 50.500' N | 122° 03.788' W |       |
| Drop Point                     | 121            | 44° 50.503' N | 121° 57.229' W |       |
| Drop Point                     | 131            | 44° 50.300' N | 122° 00.807' W |       |
| Drop Point                     | 141            | 44° 50.300' N | 122° 00.811' W |       |
| Drop Point                     | 142            | 44° 50.300' N | 122° 00.811' W |       |
| Drop Point                     | 143            | 44° 50.300' N | 122° 00.811' W |       |
| Drop Point                     | 2              | 44° 50.800' N | 122° 00.142' W |       |
| Drop Point                     | 20             | 44° 50.800' N | 122° 00.142' W |       |
| Drop Point                     | 22             | 44° 50.800' N | 122° 00.738' W |       |
| Drop Point                     | 24             | 44° 50.800' N | 122° 00.142' W |       |
| Drop Point                     | 25             | 44° 50.800' N | 122° 00.142' W |       |
| Drop Point                     | 30             | 44° 49.817' N | 122° 04.379' W |       |
| Drop Point                     | 32             | 44° 49.817' N | 122° 04.379' W |       |
| Drop Point                     | 4              | 44° 50.200' N | 121° 58.416' W |       |
| Drop Point                     | 40             | 44° 49.100' N | 122° 05.347' W |       |
| Drop Point                     | 45             | 44° 50.200' N | 121° 58.416' W |       |
| Drop Point                     | 5              | 44° 50.200' N | 121° 58.416' W |       |
| Drop Point                     | 65             | 44° 50.200' N | 121° 58.416' W |       |
| Drop Point                     | 70             | 44° 50.200' N | 121° 57.602' W |       |
| Helispot                       | Watershed      | 44° 52.700' N | 122° 03.999' W |       |
| Helispot                       | H2             | 44° 50.900' N | 121° 58.611' W |       |
| Helispot                       | H3             | 44° 50.900' N | 121° 58.611' W |       |
| Helispot                       | H4             | 44° 50.900' N | 121° 58.611' W |       |
| Helispot                       | H5             | 44° 50.900' N | 121° 58.611' W |       |
| Helispot                       | H6 (T3 Only)   | 44° 50.900' N | 121° 58.611' W |       |
| Helispot                       | H6 (T3 Only)   | 44° 50.900' N | 121° 58.611' W |       |
| Helispot                       | H7             | 44° 49.200' N | 122° 07.599' W |       |
| Helispot                       | H8             | 44° 49.200' N | 122° 07.599' W |       |
| Hot Spot - Spot Fire           | H9             | 44° 50.900' N | 121° 57.602' W |       |
| Incident Command Post Bull KCP |                | 44° 50.900' N | 121° 58.611' W |       |
| Lookout                        |                | 44° 00.200' N | 121° 06.227' W |       |
| Lookout                        |                | 44° 49.574' N | 121° 57.309' W |       |
| Mobile Weather Unit            |                | 44° 50.200' N | 121° 58.416' W |       |
| Sling Site                     |                | 44° 49.400' N | 122° 04.238' W |       |
| Water Source                   |                | 44° 50.600' N | 121° 58.400' W |       |
| Water Source                   |                | 44° 51.700' N | 121° 52.244' W |       |
| Water Source                   |                | 44° 47.200' N | 122° 03.572' W |       |
| Water Source                   |                | 44° 46.900' N | 122° 04.490' W |       |
| Water Source                   |                | 44° 48.800' N | 121° 58.140' W |       |

- Dip Site
- Helispot
- Sling Site
- Division Break
- Drop Point
- Camp
- Staging Area
- Lookout
- Hot Spot - Spot Fire
- Value at Risk
- Landing or Log Deck
- Mobile Weather Unit
- Repeater
- Hazard
- Water Source
- Mountain Peak
- Completed Dozer Line
- Completed Fuel Break
- Completed Hand Line
- Completed Mixed Construction Line
- Completed Road as Line
- Planned Dozer Line
- Planned Hand Line
- Planned Road as Line
- Access or Improved Road
- Other
- Temporary Flight Restriction
- Fire Edge
- Contained Line
- Transmission Line
- Basic Custodial Care: 1 (CLOSED)
- High Clearance Vehicles: 2
- Passenger Cars: 3, 4, 5
- DECOMMISSIONED
- USFS Admin Boundary
- Wilderness
- Historic Fire Perimeter
- Recent Timber Sales



GB Team 4  
8/27/2021-0532  
Acres from IR and GPS  
North American 1983 Datum, LatLong Grid