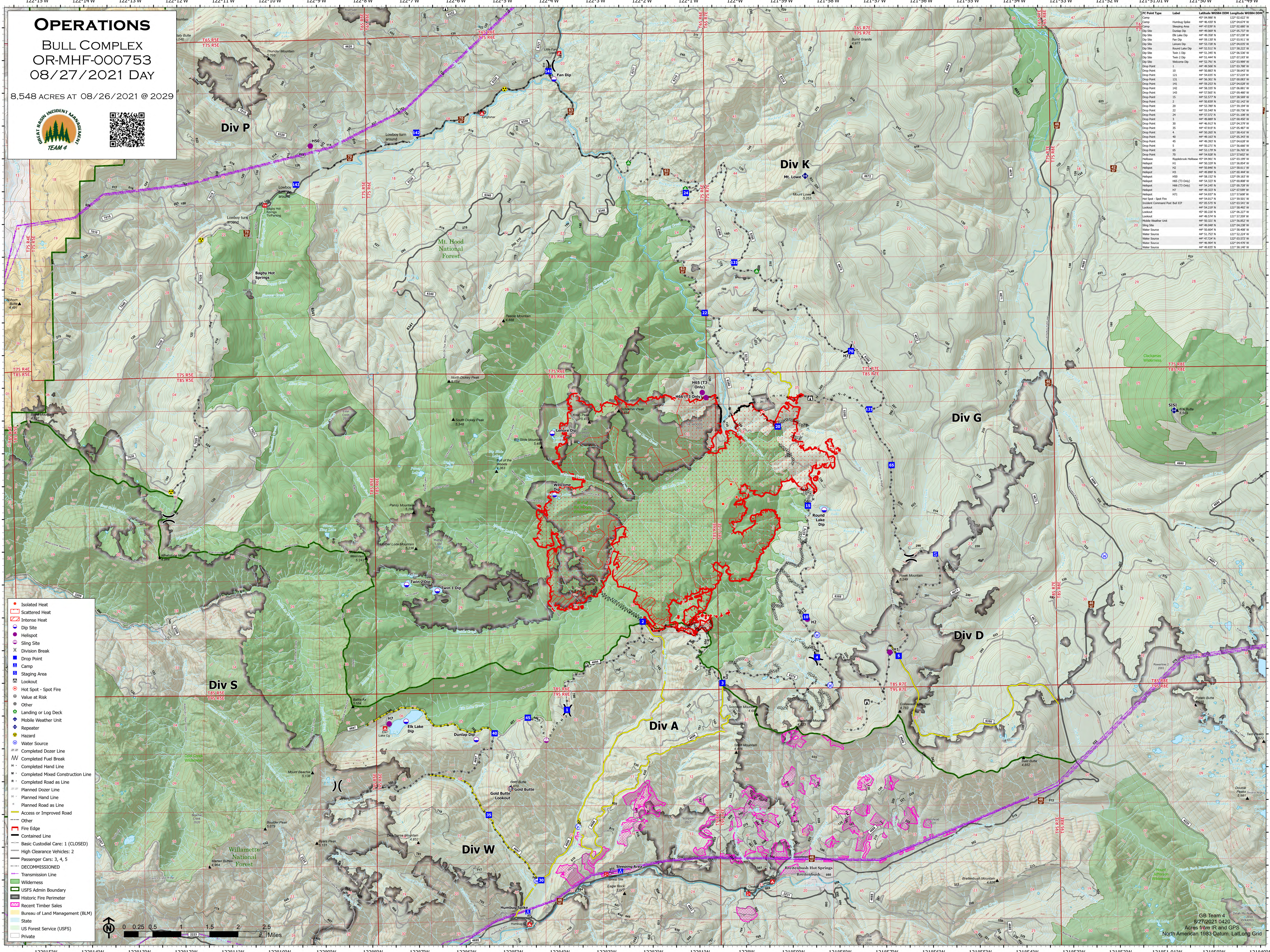


OPERATIONS

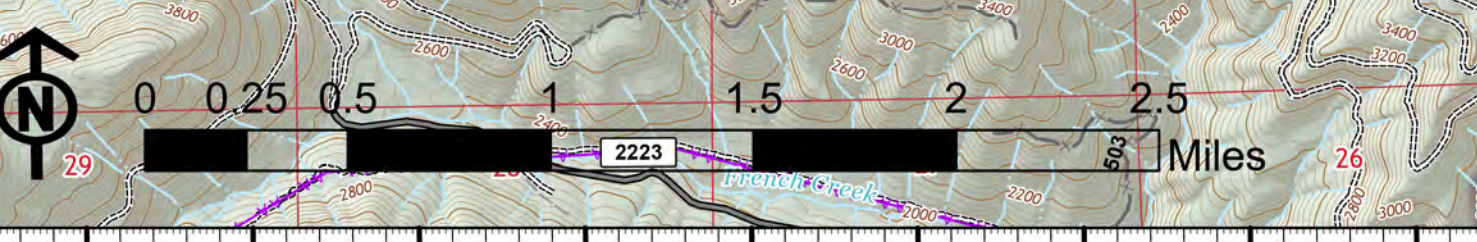
BULL COMPLEX
OR-MHF-000753
08/27/2021 DAY

8,548 ACRES AT 08/26/2021 @ 2029



FC Point Type	Label	Latitude (NAD 83)	Longitude (NAD 83)
Camp	Humbog Spine	44° 46.497' N	122° 04.674' W
Dip Site	Lowboy Dip	44° 46.069' N	122° 05.737' W
Dip Site	Elk Lake Dip	44° 46.350' N	122° 03.287' W
Dip Site	Pat Dip	44° 46.329' N	122° 04.911' W
Dip Site	Lenore Dip	44° 45.726' N	122° 04.035' W
Dip Site	Round Lake Dip	44° 45.523' N	122° 04.222' W
Dip Site	Twin 1 Dip	44° 45.145' N	122° 06.536' W
Dip Site	Twin 2 Dip	44° 45.144' N	122° 07.187' W
Dip Site	Welcome Dip	44° 45.292' N	122° 03.999' W
Drop Point	1	44° 46.506' N	122° 03.789' W
Drop Point	10	44° 46.502' N	122° 04.840' W
Drop Point	11	44° 46.035' N	121° 57.229' W
Drop Point	131	44° 46.301' N	122° 06.087' W
Drop Point	141	44° 46.329' N	122° 04.911' W
Drop Point	142	44° 46.335' N	122° 06.881' W
Drop Point	15	44° 45.706' N	122° 04.480' W
Drop Point	16	44° 45.257' N	122° 08.569' W
Drop Point	2	44° 46.897' N	122° 02.142' W
Drop Point	20	44° 45.726' N	122° 04.035' W
Drop Point	22	44° 46.540' N	122° 00.738' W
Drop Point	24	44° 45.732' N	122° 01.108' W
Drop Point	3	44° 46.869' N	122° 00.405' W
Drop Point	30	44° 46.917' N	122° 04.279' W
Drop Point	32	44° 47.937' N	122° 05.487' W
Drop Point	4	44° 46.265' N	121° 58.416' W
Drop Point	40	44° 46.103' N	122° 05.347' W
Drop Point	45	44° 46.271' N	121° 56.666' W
Drop Point	5	44° 46.271' N	121° 56.666' W
Drop Point	65	44° 45.212' N	122° 04.492' W
Drop Point	70	44° 44.928' N	121° 57.602' W
Helipad	Helipad	44° 46.962' N	122° 05.199' W
Helipad	H2	44° 46.962' N	121° 58.611' W
Helipad	H3	44° 46.962' N	122° 04.840' W
Helipad	H4	44° 46.962' N	122° 04.840' W
Helipad	H5	44° 46.962' N	122° 04.840' W
Helipad	H6	44° 46.962' N	122° 04.840' W
Helipad	H7	44° 46.962' N	122° 04.840' W
Helipad	H8	44° 46.962' N	122° 04.840' W
Helipad	H9	44° 46.962' N	122° 04.840' W
Hot Spot - Spot Fire	H71	44° 46.962' N	122° 04.840' W
Incident Command Post Bull ICP	ICP	44° 45.512' N	122° 03.541' W
Lookout	Lookout	44° 45.212' N	122° 04.492' W
Lookout	Lookout	44° 45.212' N	122° 04.492' W
Lookout	Lookout	44° 45.212' N	122° 04.492' W
Mobile Weather Unit	MW	44° 46.962' N	122° 04.840' W
Slip Site	Slip Site	44° 46.962' N	122° 04.840' W
Water Source	Water Source	44° 46.962' N	122° 04.840' W
Water Source	Water Source	44° 46.962' N	122° 04.840' W
Water Source	Water Source	44° 46.962' N	122° 04.840' W
Water Source	Water Source	44° 46.962' N	122° 04.840' W

- Isolated Heat
- Scattered Heat
- Intense Heat
- Dip Site
- Helipad
- Sling Site
- Division Break
- Drop Point
- Camp
- Staging Area
- Lookout
- Hot Spot - Spot Fire
- Value at Risk
- Other
- Landing or Log Deck
- Mobile Weather Unit
- Repeater
- Hazard
- Water Source
- Completed Dozer Line
- Completed Fuel Break
- Completed Hand Line
- Completed Mixed Construction Line
- Completed Road as Line
- Planned Dozer Line
- Planned Hand Line
- Planned Road as Line
- Access or Improved Road
- Other
- Fire Edge
- Contained Line
- Basic Custodial Care: 1 (CLOSED)
- High Clearance Vehicles: 2
- Passenger Cars: 3, 4, 5
- DECOMMISSIONED
- Transmission Line
- Wilderness
- USFS Admin Boundary
- Historic Fire Perimeter
- Recent Timber Sales
- Bureau of Land Management (BLM)
- State
- US Forest Service (USFS)
- Private



GB Team 4
8/27/2021 0420
Acres from IR and GPS
North American 1983 Datum, LatLong Grid