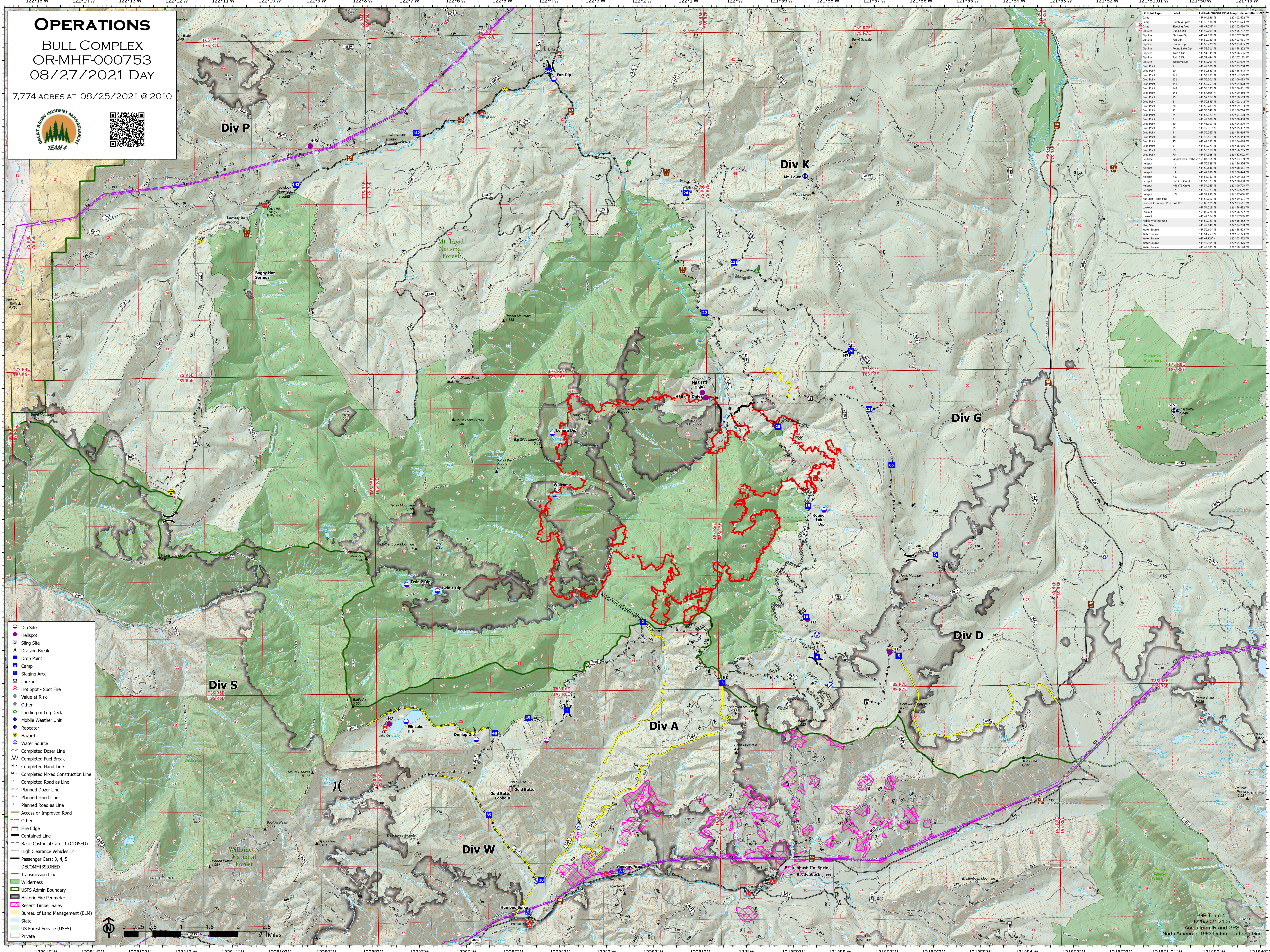


OPERATIONS

BULL COMPLEX OR-MHF-000753 08/27/2021 DAY

7,774 ACRES AT 08/25/2021 @ 2010



FC Point Type	Label	Latitude	Width	DOH	Longitude	Width	DOH
Camp	Humboldt Station	44° 46.430' N	122° 04.614' W		122° 02.027' W		
Camp	Shoshone Area	44° 46.600' N	122° 05.911' W		122° 05.737' W		
Dip Site	Dunlap Dip	44° 46.600' N	122° 05.737' W				
Dip Site	Elk Lake Dip	44° 46.500' N	122° 03.230' W				
Dip Site	Fan Dip	44° 46.500' N	122° 04.833' W				
Dip Site	Lowboy Dip	44° 53.720' N	122° 04.833' W				
Dip Site	Round Lake Dip	44° 53.520' N	122° 04.232' W				
Dip Site	Twin 1 Dip	44° 51.340' N	122° 06.530' W				
Dip Site	Twin 2 Dip	44° 51.440' N	122° 07.133' W				
Drop Point	Wellcome Dip	44° 49.500' N	122° 03.780' W				
Drop Point	10	44° 49.500' N	122° 03.990' W				
Drop Point	121	44° 49.500' N	122° 03.780' W				
Drop Point	10	44° 49.500' N	122° 03.990' W				
Drop Point	141	44° 49.500' N	122° 06.881' W				
Drop Point	142	44° 49.500' N	122° 06.881' W				
Drop Point	143	44° 50.700' N	122° 06.881' W				
Drop Point	15	44° 52.570' N	122° 05.560' W				
Drop Point	2	44° 50.830' N	122° 02.142' W				
Drop Point	20	44° 51.700' N	122° 01.940' W				
Drop Point	22	44° 55.440' N	122° 00.730' W				
Drop Point	24	44° 55.270' N	122° 01.100' W				
Drop Point	3	44° 50.800' N	122° 00.400' W				
Drop Point	30	44° 49.813' N	122° 04.230' W				
Drop Point	35	44° 47.920' N	122° 05.480' W				
Drop Point	4	44° 50.260' N	122° 05.410' W				
Drop Point	40	44° 49.163' N	122° 05.343' W				
Drop Point	45	44° 50.270' N	122° 04.230' W				
Drop Point	46	44° 50.270' N	122° 04.230' W				
Drop Point	70	44° 54.900' N	121° 53.602' W				
Helispot	Wellcome Helispot	44° 49.500' N	122° 03.780' W				
Helispot	H1	44° 49.500' N	122° 03.990' W				
Helispot	H2	44° 50.800' N	121° 53.613' W				
Helispot	H3	44° 49.800' N	122° 03.940' W				
Helispot	H10	44° 50.150' N	122° 09.163' W				
Helispot	H15 (T1 Only)	44° 54.520' N	122° 00.800' W				
Helispot	H15 (T2 Only)	44° 54.520' N	122° 00.730' W				
Helispot	H7	44° 49.320' N	122° 02.590' W				
Helispot	H71	44° 54.920' N	121° 53.600' W				
Lookout	Incident Command Post Bull BCP	44° 51.230' N	122° 03.541' W				
Lookout	40	44° 50.260' N	122° 05.480' W				
Lookout	45	44° 50.260' N	122° 05.410' W				
Mobile Weather Unit	Mobile Weather Unit	44° 49.574' N	122° 03.200' W				
Water Source	40	44° 49.640' N	122° 04.230' W				
Water Source	45	44° 50.260' N	122° 05.480' W				
Water Source	46	44° 50.260' N	122° 05.410' W				
Water Source	47	44° 47.224' N	122° 03.572' W				
Water Source	70	44° 54.900' N	121° 54.470' W				
Water Source	70	44° 49.820' N	121° 53.140' W				

- Dip Site
- Helispot
- Sling Site
- Division Break
- Drop Point
- Camp
- Staging Area
- Lookout
- Hot Spot - Spot Fire
- Value at Risk
- Other
- Landing or Log Deck
- Mobile Weather Unit
- Repeater
- Hazard
- Water Source
- Completed Dozer Line
- Completed Fuel Break
- Completed Hand Line
- Completed Mixed Construction Line
- Completed Road as Line
- Planned Dozer Line
- Planned Hand Line
- Planned Road as Line
- Access or Improved Road
- Other
- Fire Edge
- Contained Line
- Basic Custodial Care: 1 (CLOSED)
- High Clearance Vehicles: 2
- Passenger Cars: 3, 4, 5
- DECOMMISSIONED
- Transmission Line
- Wilderness
- USFS Admin Boundary
- Historic Fire Perimeter
- Recent Timber Sales
- Bureau of Land Management (BLM)
- State
- US Forest Service (USFS)
- Private



GB Team 4
8/26/2021 2106
Acres from IR and GPS
North American 1983 Datum, Lat/Long Grid