

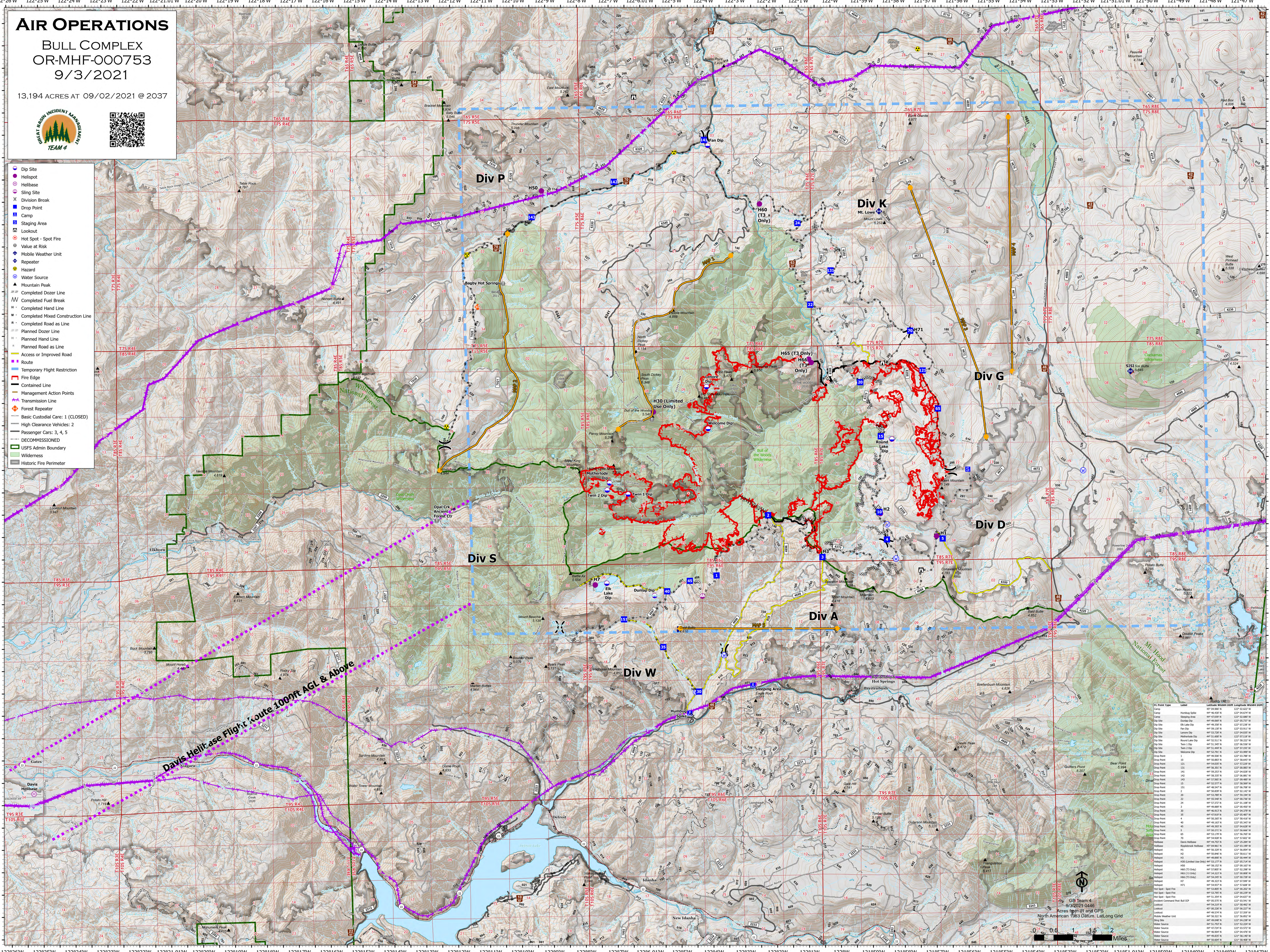
AIR OPERATIONS

BULL COMPLEX
OR-MHF-000753
9/3/2021

13,194 ACRES AT 09/02/2021 @ 2037



- Dip Site
- Helispot
- Helibase
- Sling Site
- Division Break
- Drop Point
- Camp
- Staging Area
- Lookout
- Hot Spot - Spot Fire
- Value at Risk
- Mobile Weather Unit
- Repeater
- Hazard
- Water Source
- Mountain Peak
- Completed Dozer Line
- Completed Fuel Break
- Completed Hand Line
- Completed Mixed Construction Line
- Completed Road as Line
- Planned Dozer Line
- Planned Hand Line
- Planned Road as Line
- Access or Improved Road
- Route
- Temporary Flight Restriction
- Fire Edge
- Contained Line
- Management Action Points
- Transmission Line
- Forest Repeater
- Basic Custodial Care: 1 (CLOSED)
- High Clearance Vehicles: 2
- Passenger Cars: 3, 4, 5
- DECOMMISSIONED
- USFS Admin Boundary
- Wilderness
- Historic Fire Perimeter



Davis Helitase Flight Route 1000ft AGL & Above

IC Point Type	Label	Latitude	Longitude	Uplift	Access	Notes
Camp	Humboldt	44° 44.427' N	122° 04.614' W			
Camp	Staging Area	44° 47.020' N	122° 02.887' W			
Dip Site	Elk Lake Dip	44° 48.800' N	122° 02.720' W			
Dip Site	Lorenz Dip	44° 53.797' N	122° 04.037' W			
Dip Site	Round Lake Dip	44° 53.517' N	122° 04.227' W			
Dip Site	Twin 1 Dip	44° 53.780' N	122° 03.920' W			
Dip Site	Twin 2 Dip	44° 53.487' N	122° 03.192' W			
Dip Site	Wildfire Dip	44° 49.500' N	122° 03.788' W			
Drop Point	1	44° 52.000' N	122° 03.843' W			
Drop Point	11	44° 46.037' N	122° 04.874' W			
Drop Point	12	44° 46.037' N	122° 04.874' W			
Drop Point	13	44° 46.037' N	122° 04.874' W			
Drop Point	14	44° 46.037' N	122° 04.874' W			
Drop Point	15	44° 46.037' N	122° 04.874' W			
Drop Point	16	44° 46.037' N	122° 04.874' W			
Drop Point	17	44° 46.037' N	122° 04.874' W			
Drop Point	18	44° 46.037' N	122° 04.874' W			
Drop Point	19	44° 46.037' N	122° 04.874' W			
Drop Point	20	44° 46.037' N	122° 04.874' W			
Drop Point	21	44° 46.037' N	122° 04.874' W			
Drop Point	22	44° 46.037' N	122° 04.874' W			
Drop Point	23	44° 46.037' N	122° 04.874' W			
Drop Point	24	44° 46.037' N	122° 04.874' W			
Drop Point	25	44° 46.037' N	122° 04.874' W			
Drop Point	26	44° 46.037' N	122° 04.874' W			
Drop Point	27	44° 46.037' N	122° 04.874' W			
Drop Point	28	44° 46.037' N	122° 04.874' W			
Drop Point	29	44° 46.037' N	122° 04.874' W			
Drop Point	30	44° 46.037' N	122° 04.874' W			
Drop Point	31	44° 46.037' N	122° 04.874' W			
Drop Point	32	44° 46.037' N	122° 04.874' W			
Drop Point	33	44° 46.037' N	122° 04.874' W			
Drop Point	34	44° 46.037' N	122° 04.874' W			
Drop Point	35	44° 46.037' N	122° 04.874' W			
Drop Point	36	44° 46.037' N	122° 04.874' W			
Drop Point	37	44° 46.037' N	122° 04.874' W			
Drop Point	38	44° 46.037' N	122° 04.874' W			
Drop Point	39	44° 46.037' N	122° 04.874' W			
Drop Point	40	44° 46.037' N	122° 04.874' W			
Drop Point	41	44° 46.037' N	122° 04.874' W			
Drop Point	42	44° 46.037' N	122° 04.874' W			
Drop Point	43	44° 46.037' N	122° 04.874' W			
Drop Point	44	44° 46.037' N	122° 04.874' W			
Drop Point	45	44° 46.037' N	122° 04.874' W			
Drop Point	46	44° 46.037' N	122° 04.874' W			
Drop Point	47	44° 46.037' N	122° 04.874' W			
Drop Point	48	44° 46.037' N	122° 04.874' W			
Drop Point	49	44° 46.037' N	122° 04.874' W			
Drop Point	50	44° 46.037' N	122° 04.874' W			
Drop Point	51	44° 46.037' N	122° 04.874' W			
Drop Point	52	44° 46.037' N	122° 04.874' W			
Drop Point	53	44° 46.037' N	122° 04.874' W			
Drop Point	54	44° 46.037' N	122° 04.874' W			
Drop Point	55	44° 46.037' N	122° 04.874' W			
Drop Point	56	44° 46.037' N	122° 04.874' W			
Drop Point	57	44° 46.037' N	122° 04.874' W			
Drop Point	58	44° 46.037' N	122° 04.874' W			
Drop Point	59	44° 46.037' N	122° 04.874' W			
Drop Point	60	44° 46.037' N	122° 04.874' W			
Drop Point	61	44° 46.037' N	122° 04.874' W			
Drop Point	62	44° 46.037' N	122° 04.874' W			
Drop Point	63	44° 46.037' N	122° 04.874' W			
Drop Point	64	44° 46.037' N	122° 04.874' W			
Drop Point	65	44° 46.037' N	122° 04.874' W			
Drop Point	66	44° 46.037' N	122° 04.874' W			
Drop Point	67	44° 46.037' N	122° 04.874' W			
Drop Point	68	44° 46.037' N	122° 04.874' W			
Drop Point	69	44° 46.037' N	122° 04.874' W			
Drop Point	70	44° 46.037' N	122° 04.874' W			
Drop Point	71	44° 46.037' N	122° 04.874' W			
Drop Point	72	44° 46.037' N	122° 04.874' W			
Drop Point	73	44° 46.037' N	122° 04.874' W			
Drop Point	74	44° 46.037' N	122° 04.874' W			
Drop Point	75	44° 46.037' N	122° 04.874' W			
Drop Point	76	44° 46.037' N	122° 04.874' W			
Drop Point	77	44° 46.037' N	122° 04.874' W			
Drop Point	78	44° 46.037' N	122° 04.874' W			
Drop Point	79	44° 46.037' N	122° 04.874' W			
Drop Point	80	44° 46.037' N	122° 04.874' W			
Drop Point	81	44° 46.037' N	122° 04.874' W			
Drop Point	82	44° 46.037' N	122° 04.874' W			
Drop Point	83	44° 46.037' N	122° 04.874' W			
Drop Point	84	44° 46.037' N	122° 04.874' W			
Drop Point	85	44° 46.037' N	122° 04.874' W			
Drop Point	86	44° 46.037' N	122° 04.874' W			
Drop Point	87	44° 46.037' N	122° 04.874' W			
Drop Point	88	44° 46.037' N	122° 04.874' W			
Drop Point	89	44° 46.037' N	122° 04.874' W			
Drop Point	90	44° 46.037' N	122° 04.874' W			
Drop Point	91	44° 46.037' N	122° 04.874' W			
Drop Point	92	44° 46.037' N	122° 04.874' W			
Drop Point	93	44° 46.037' N	122° 04.874' W			
Drop Point	94	44° 46.037' N	122° 04.874' W			
Drop Point	95	44° 46.037' N	122° 04.874' W			
Drop Point	96	44° 46.037' N	122° 04.874' W			
Drop Point	97	44° 46.037' N	122° 04.874' W			
Drop Point	98	44° 46.037' N	122° 04.874' W			
Drop Point	99	44° 46.037' N	122° 04.874' W			
Drop Point	100	44° 46.037' N	122° 04.874' W			

GB Team 4
9/3/2021 0446
Acres Ign'd and OPS
North American 1983 Datum, Lat/Long Grid
0 0.5 1 1.5 2 Miles