



**CLOSURE**  
**BULL COMPLEX**  
**OR-MHF-000753**  
**9/3/2021**

13,194 ACRES AT 09/02/2021 @ 2037

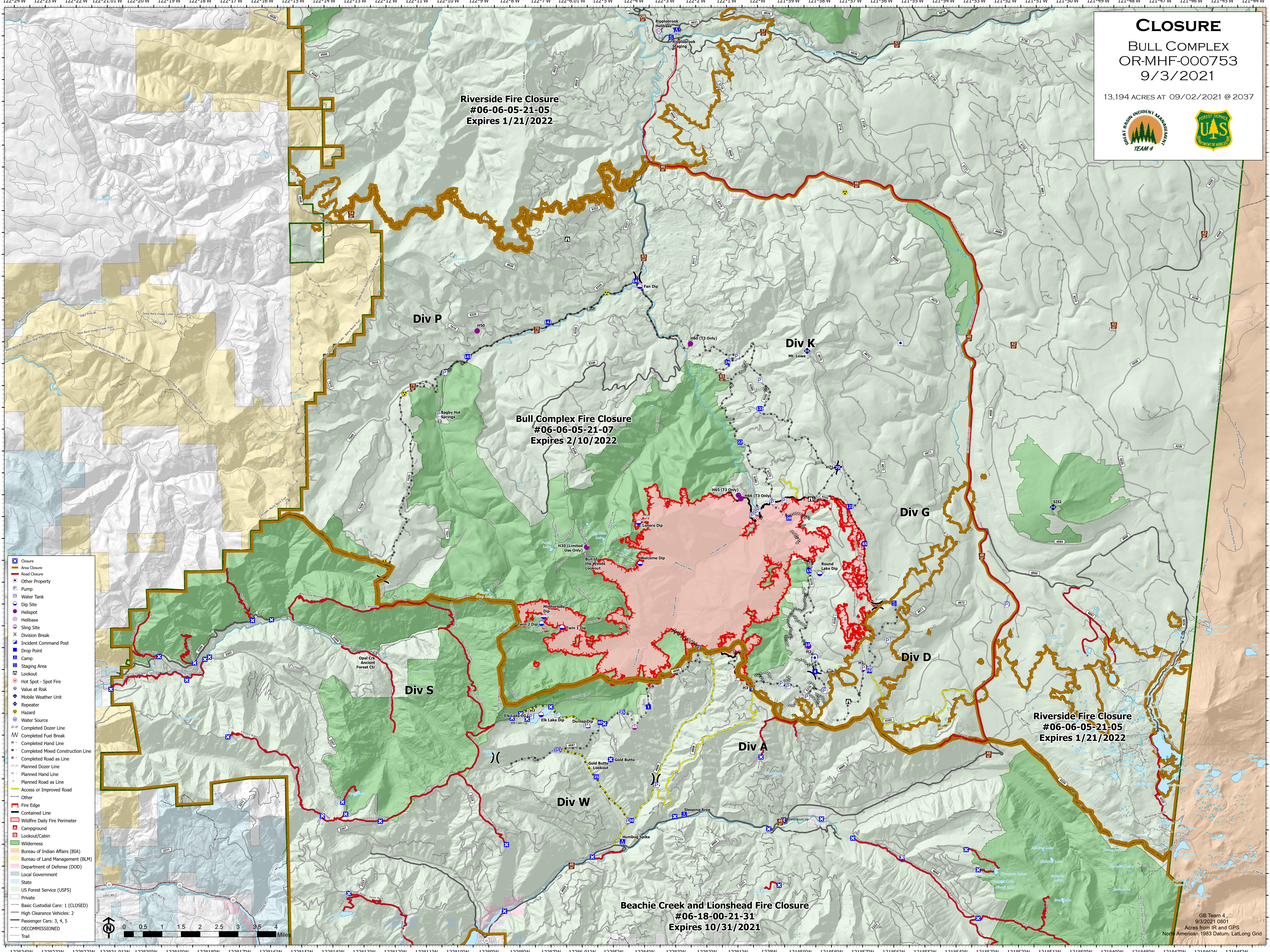



**Riverside Fire Closure**  
**#06-06-05-21-05**  
**Expires 1/21/2022**

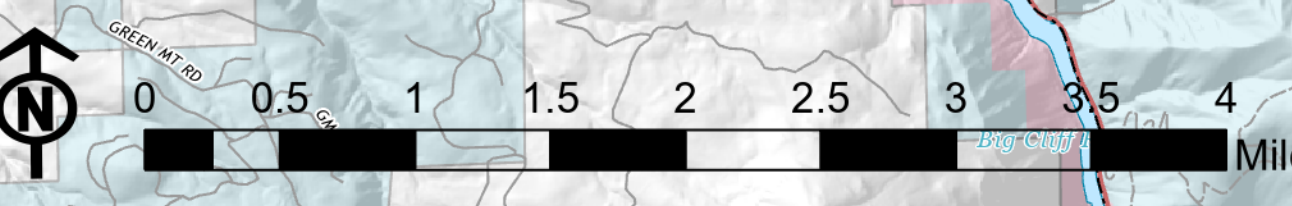
**Bull Complex Fire Closure**  
**#06-06-05-21-07**  
**Expires 2/10/2022**

**Riverside Fire Closure**  
**#06-06-05-21-05**  
**Expires 1/21/2022**

**Beachie Creek and Lionshead Fire Closure**  
**#06-18-00-21-31**  
**Expires 10/31/2021**



- Closure
- Area Closure
- Road Closure
- Other Property
- Pump
- Water Tank
- Dip Site
- Helispot
- Helibase
- Sling Site
- Division Break
- Incident Command Post
- Drop Point
- Camp
- Staging Area
- Lookout
- Hot Spot - Spot Fire
- Value at Risk
- Mobile Weather Unit
- Repeater
- Hazard
- Water Source
- Completed Dozer Line
- Completed Fuel Break
- Completed Hand Line
- Completed Mixed Construction Line
- Completed Road as Line
- Planned Dozer Line
- Planned Hand Line
- Planned Road as Line
- Access or Improved Road
- Other
- Fire Edge
- Contained Line
- Wildfire Daily Fire Perimeter
- Campground
- Lookout/Cabin
- Wilderness
- Bureau of Indian Affairs (BIA)
- Bureau of Land Management (BLM)
- Department of Defense (DOD)
- Local Government
- State
- US Forest Service (USFS)
- Private
- Basic Custodial Care: 1 (CLOSED)
- High Clearance Vehicles: 2
- Passenger Cars: 3, 4, 5
- DECOMMISSIONED
- Trail



GB Team 4  
 9/3/2021 0801  
 Acres from IR and GPS  
 North American 1983 Datum, Lat/Long Grid