

122°15'W

122°12.5'W

122°10'W

122°7.5'W

122°5'W

122°2.5'W

45°N

44°57.5'N

44°55'N

44°52.5'N

44°50'N

44°47.5'N

45°N

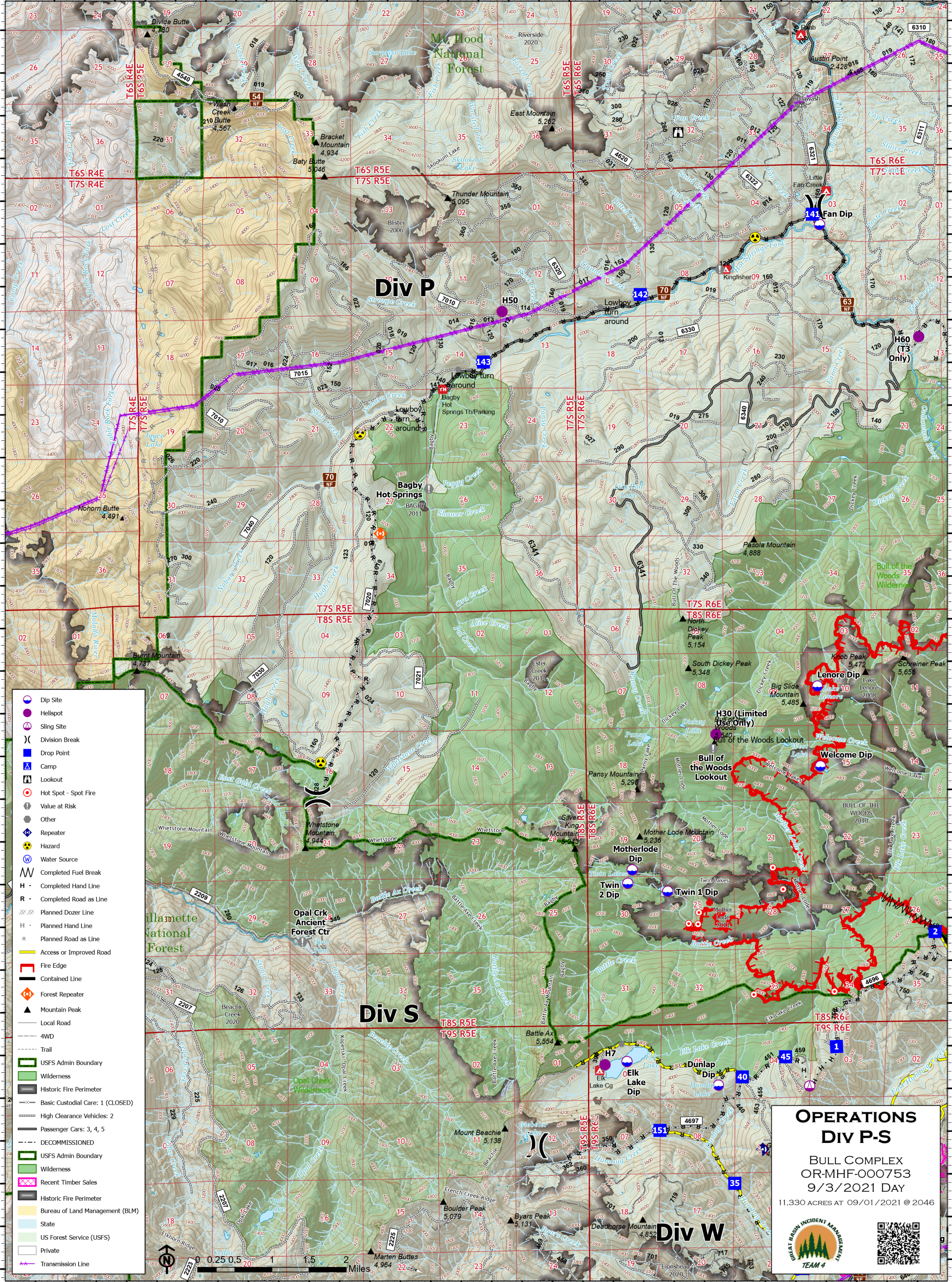
44°57.5'N

44°55'N

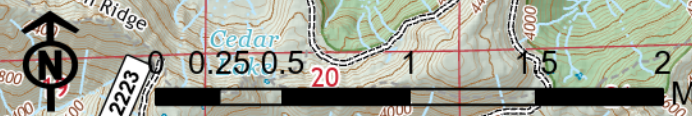
44°52.5'N

44°50'N

44°47.5'N



- Dip Site
- Helispot
- Sling Site
- Division Break
- Drop Point
- Camp
- Lookout
- Hot Spot - Spot Fire
- Value at Risk
- Other
- Repeater
- Hazard
- Water Source
- Completed Fuel Break
- Completed Hand Line
- Completed Road as Line
- Planned Dozer Line
- Planned Hand Line
- Planned Road as Line
- Access or Improved Road
- Fire Edge
- Contained Line
- Forest Repeater
- Mountain Peak
- Local Road
- 4WD
- Trail
- USFS Admin Boundary
- Wilderness
- Historic Fire Perimeter
- Basic Custodial Care: 1 (CLOSED)
- High Clearance Vehicles: 2
- Passenger Cars: 3, 4, 5
- DECOMMISSIONED
- USFS Admin Boundary
- Wilderness
- Recent Timber Sales
- Historic Fire Perimeter
- Bureau of Land Management (BLM)
- State
- US Forest Service (USFS)
- Private
- Transmission Line



**OPERATIONS
DIV P-S**

BULL COMPLEX
OR-MHF-000753
9/3/2021 DAY
11,330 ACRES AT 09/01/2021 © 2046

