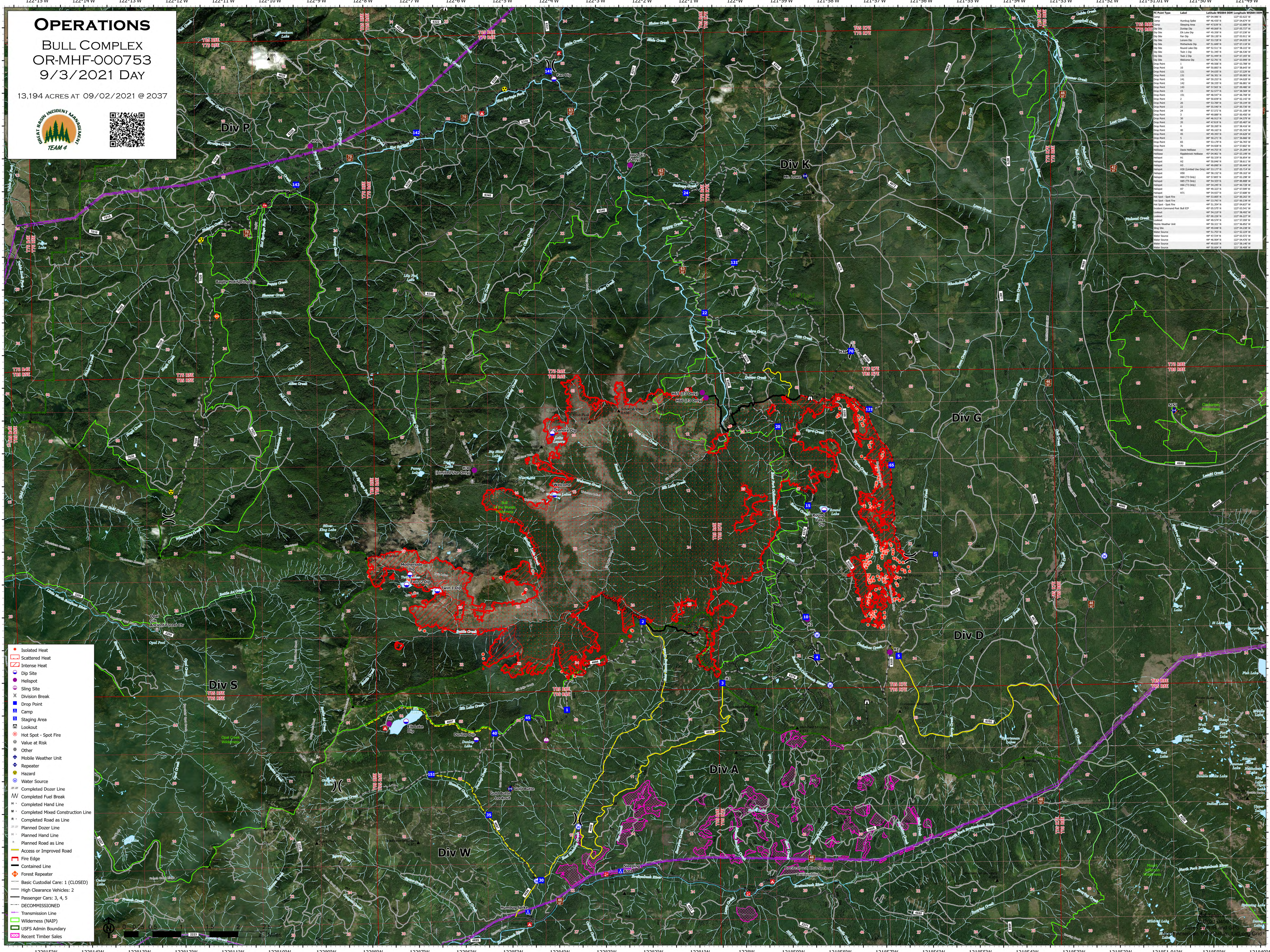


# OPERATIONS

## BULL COMPLEX OR-MHF-000753 9/3/2021 DAY

13,194 ACRES AT 09/02/2021 @ 2037



IC Point Type	Label	Latitude	Longitude	Icon	Color
Camp	131	44° 54.388' N	122° 01.822' W		
Camp	142	44° 54.388' N	122° 01.822' W		
Dip Site	142	44° 54.388' N	122° 01.822' W		
Dip Site	143	44° 54.388' N	122° 01.822' W		
Dip Site	144	44° 54.388' N	122° 01.822' W		
Dip Site	145	44° 54.388' N	122° 01.822' W		
Dip Site	146	44° 54.388' N	122° 01.822' W		
Dip Site	147	44° 54.388' N	122° 01.822' W		
Dip Site	148	44° 54.388' N	122° 01.822' W		
Dip Site	149	44° 54.388' N	122° 01.822' W		
Dip Site	150	44° 54.388' N	122° 01.822' W		
Dip Site	151	44° 54.388' N	122° 01.822' W		
Dip Site	152	44° 54.388' N	122° 01.822' W		
Dip Site	153	44° 54.388' N	122° 01.822' W		
Dip Site	154	44° 54.388' N	122° 01.822' W		
Dip Site	155	44° 54.388' N	122° 01.822' W		
Dip Site	156	44° 54.388' N	122° 01.822' W		
Dip Site	157	44° 54.388' N	122° 01.822' W		
Dip Site	158	44° 54.388' N	122° 01.822' W		
Dip Site	159	44° 54.388' N	122° 01.822' W		
Dip Site	160	44° 54.388' N	122° 01.822' W		
Dip Site	161	44° 54.388' N	122° 01.822' W		
Dip Site	162	44° 54.388' N	122° 01.822' W		
Dip Site	163	44° 54.388' N	122° 01.822' W		
Dip Site	164	44° 54.388' N	122° 01.822' W		
Dip Site	165	44° 54.388' N	122° 01.822' W		
Dip Site	166	44° 54.388' N	122° 01.822' W		
Dip Site	167	44° 54.388' N	122° 01.822' W		
Dip Site	168	44° 54.388' N	122° 01.822' W		
Dip Site	169	44° 54.388' N	122° 01.822' W		
Dip Site	170	44° 54.388' N	122° 01.822' W		
Dip Site	171	44° 54.388' N	122° 01.822' W		
Dip Site	172	44° 54.388' N	122° 01.822' W		
Dip Site	173	44° 54.388' N	122° 01.822' W		
Dip Site	174	44° 54.388' N	122° 01.822' W		
Dip Site	175	44° 54.388' N	122° 01.822' W		
Dip Site	176	44° 54.388' N	122° 01.822' W		
Dip Site	177	44° 54.388' N	122° 01.822' W		
Dip Site	178	44° 54.388' N	122° 01.822' W		
Dip Site	179	44° 54.388' N	122° 01.822' W		
Dip Site	180	44° 54.388' N	122° 01.822' W		
Dip Site	181	44° 54.388' N	122° 01.822' W		
Dip Site	182	44° 54.388' N	122° 01.822' W		
Dip Site	183	44° 54.388' N	122° 01.822' W		
Dip Site	184	44° 54.388' N	122° 01.822' W		
Dip Site	185	44° 54.388' N	122° 01.822' W		
Dip Site	186	44° 54.388' N	122° 01.822' W		
Dip Site	187	44° 54.388' N	122° 01.822' W		
Dip Site	188	44° 54.388' N	122° 01.822' W		
Dip Site	189	44° 54.388' N	122° 01.822' W		
Dip Site	190	44° 54.388' N	122° 01.822' W		
Dip Site	191	44° 54.388' N	122° 01.822' W		
Dip Site	192	44° 54.388' N	122° 01.822' W		
Dip Site	193	44° 54.388' N	122° 01.822' W		
Dip Site	194	44° 54.388' N	122° 01.822' W		
Dip Site	195	44° 54.388' N	122° 01.822' W		
Dip Site	196	44° 54.388' N	122° 01.822' W		
Dip Site	197	44° 54.388' N	122° 01.822' W		
Dip Site	198	44° 54.388' N	122° 01.822' W		
Dip Site	199	44° 54.388' N	122° 01.822' W		
Dip Site	200	44° 54.388' N	122° 01.822' W		

- Isolated Heat
- Scattered Heat
- Intense Heat
- Dip Site
- Helispot
- Sling Site
- Division Break
- Drop Point
- Camp
- Staging Area
- Lookout
- Hot Spot - Spot Fire
- Value at Risk
- Other
- Mobile Weather Unit
- Repeater
- Hazard
- Water Source
- Completed Dozer Line
- Completed Fuel Break
- Completed Hand Line
- Completed Mixed Construction Line
- Completed Road as Line
- Planned Dozer Line
- Planned Hand Line
- Planned Road as Line
- Access or Improved Road
- Fire Edge
- Contained Line
- Forest Repeater
- Basic Custodial Care: 1 (CLOSED)
- High Clearance Vehicles: 2
- Passenger Cars: 3, 4, 5
- DECOMMISSIONED
- Transmission Line
- Wilderness (NAIP)
- USFS Admin Boundary
- Recent Timber Sales

