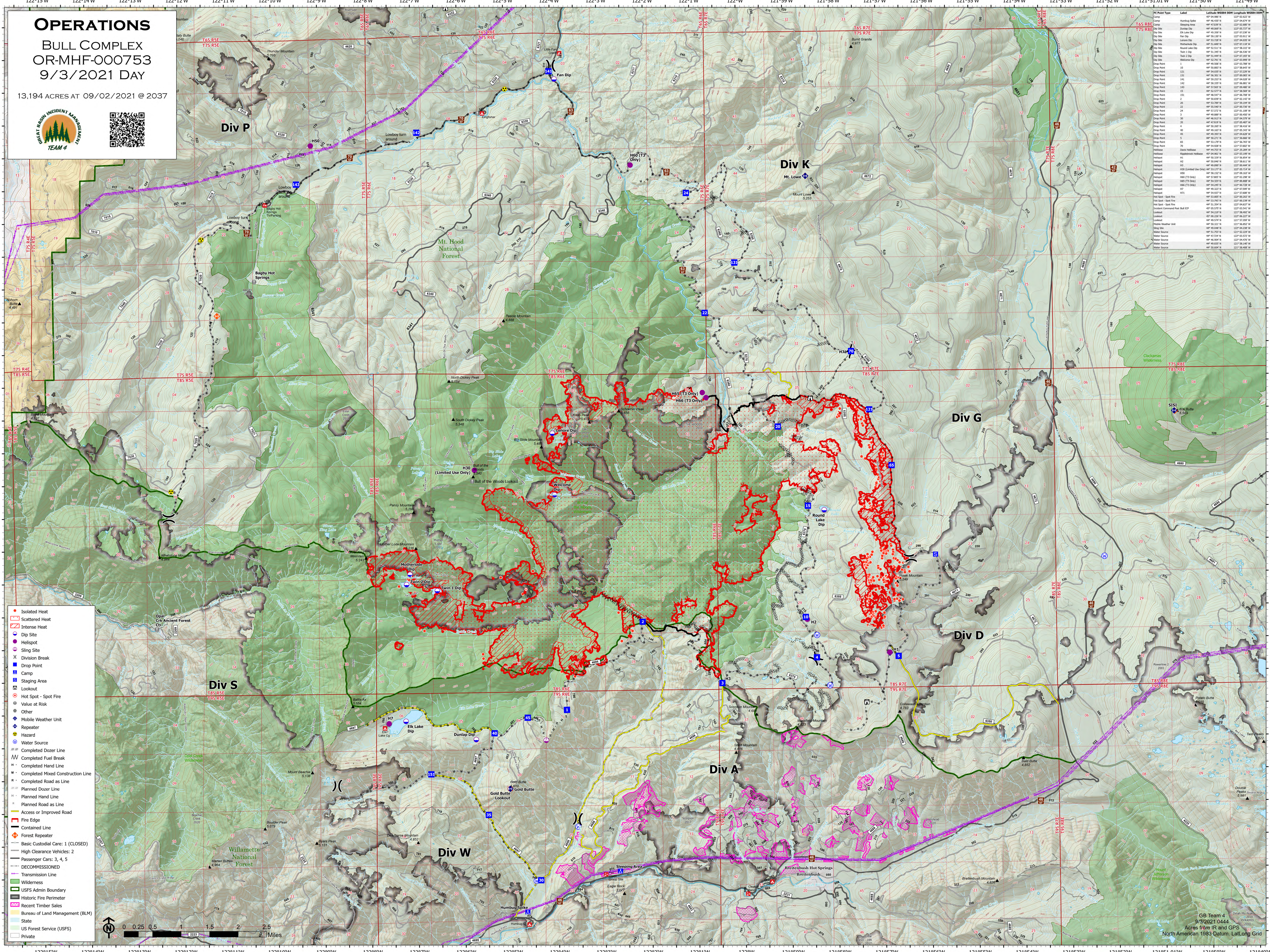


OPERATIONS

BULL COMPLEX
OR-MHF-000753
9/3/2021 DAY

13,194 ACRES AT 09/02/2021 @ 2037



- Isolated Heat
- Scattered Heat
- Intense Heat
- Dip Site
- Helispot
- Sling Site
- Division Break
- Drop Point
- Camp
- Staging Area
- Lookout
- Hot Spot - Spot Fire
- Value at Risk
- Other
- Mobile Weather Unit
- Repeater
- Hazard
- Water Source
- Completed Dozer Line
- Completed Fuel Break
- Completed Hand Line
- Completed Mixed Construction Line
- Completed Road as Line
- Planned Dozer Line
- Planned Hand Line
- Planned Road as Line
- Access or Improved Road
- Fire Edge
- Contained Line
- Forest Repeater
- Basic Custodial Care: 1 (CLOSED)
- High Clearance Vehicles: 2
- Passenger Cars: 3, 4, 5
- DECOMMISSIONED
- Transmission Line
- Wilderness
- USFS Admin Boundary
- Historic Fire Perimeter
- Recent Timber Sales
- Bureau of Land Management (BLM)
- State
- US Forest Service (USFS)
- Private

FC Point Type	Label	Latitude	Longitude	Length	Width	Depth
Camp	447 04 188 W	44° 03' 22" N	122° 02' 22" W			
Camp	447 04 189 W	44° 03' 22" N	122° 02' 22" W			
Camp	447 04 190 W	44° 03' 22" N	122° 02' 22" W			
Camp	447 04 191 W	44° 03' 22" N	122° 02' 22" W			
Camp	447 04 192 W	44° 03' 22" N	122° 02' 22" W			
Camp	447 04 193 W	44° 03' 22" N	122° 02' 22" W			
Camp	447 04 194 W	44° 03' 22" N	122° 02' 22" W			
Camp	447 04 195 W	44° 03' 22" N	122° 02' 22" W			
Camp	447 04 196 W	44° 03' 22" N	122° 02' 22" W			
Camp	447 04 197 W	44° 03' 22" N	122° 02' 22" W			
Camp	447 04 198 W	44° 03' 22" N	122° 02' 22" W			
Camp	447 04 199 W	44° 03' 22" N	122° 02' 22" W			
Camp	447 04 200 W	44° 03' 22" N	122° 02' 22" W			
Camp	447 04 201 W	44° 03' 22" N	122° 02' 22" W			
Camp	447 04 202 W	44° 03' 22" N	122° 02' 22" W			
Camp	447 04 203 W	44° 03' 22" N	122° 02' 22" W			
Camp	447 04 204 W	44° 03' 22" N	122° 02' 22" W			
Camp	447 04 205 W	44° 03' 22" N	122° 02' 22" W			
Camp	447 04 206 W	44° 03' 22" N	122° 02' 22" W			
Camp	447 04 207 W	44° 03' 22" N	122° 02' 22" W			
Camp	447 04 208 W	44° 03' 22" N	122° 02' 22" W			
Camp	447 04 209 W	44° 03' 22" N	122° 02' 22" W			
Camp	447 04 210 W	44° 03' 22" N	122° 02' 22" W			
Camp	447 04 211 W	44° 03' 22" N	122° 02' 22" W			
Camp	447 04 212 W	44° 03' 22" N	122° 02' 22" W			
Camp	447 04 213 W	44° 03' 22" N	122° 02' 22" W			
Camp	447 04 214 W	44° 03' 22" N	122° 02' 22" W			
Camp	447 04 215 W	44° 03' 22" N	122° 02' 22" W			
Camp	447 04 216 W	44° 03' 22" N	122° 02' 22" W			
Camp	447 04 217 W	44° 03' 22" N	122° 02' 22" W			
Camp	447 04 218 W	44° 03' 22" N	122° 02' 22" W			
Camp	447 04 219 W	44° 03' 22" N	122° 02' 22" W			
Camp	447 04 220 W	44° 03' 22" N	122° 02' 22" W			
Camp	447 04 221 W	44° 03' 22" N	122° 02' 22" W			
Camp	447 04 222 W	44° 03' 22" N	122° 02' 22" W			
Camp	447 04 223 W	44° 03' 22" N	122° 02' 22" W			
Camp	447 04 224 W	44° 03' 22" N	122° 02' 22" W			
Camp	447 04 225 W	44° 03' 22" N	122° 02' 22" W			
Camp	447 04 226 W	44° 03' 22" N	122° 02' 22" W			
Camp	447 04 227 W	44° 03' 22" N	122° 02' 22" W			
Camp	447 04 228 W	44° 03' 22" N	122° 02' 22" W			
Camp	447 04 229 W	44° 03' 22" N	122° 02' 22" W			
Camp	447 04 230 W	44° 03' 22" N	122° 02' 22" W			
Camp	447 04 231 W	44° 03' 22" N	122° 02' 22" W			
Camp	447 04 232 W	44° 03' 22" N	122° 02' 22" W			
Camp	447 04 233 W	44° 03' 22" N	122° 02' 22" W			
Camp	447 04 234 W	44° 03' 22" N	122° 02' 22" W			
Camp	447 04 235 W	44° 03' 22" N	122° 02' 22" W			
Camp	447 04 236 W	44° 03' 22" N	122° 02' 22" W			
Camp	447 04 237 W	44° 03' 22" N	122° 02' 22" W			
Camp	447 04 238 W	44° 03' 22" N	122° 02' 22" W			
Camp	447 04 239 W	44° 03' 22" N	122° 02' 22" W			
Camp	447 04 240 W	44° 03' 22" N	122° 02' 22" W			
Camp	447 04 241 W	44° 03' 22" N	122° 02' 22" W			
Camp	447 04 242 W	44° 03' 22" N	122° 02' 22" W			
Camp	447 04 243 W	44° 03' 22" N	122° 02' 22" W			
Camp	447 04 244 W	44° 03' 22" N	122° 02' 22" W			
Camp	447 04 245 W	44° 03' 22" N	122° 02' 22" W			
Camp	447 04 246 W	44° 03' 22" N	122° 02' 22" W			
Camp	447 04 247 W	44° 03' 22" N	122° 02' 22" W			
Camp	447 04 248 W	44° 03' 22" N	122° 02' 22" W			
Camp	447 04 249 W	44° 03' 22" N	122° 02' 22" W			
Camp	447 04 250 W	44° 03' 22" N	122° 02' 22" W			



GB Team 4
9/3/2021 0444
Acres from IR and GPS
North American 1983 Datum, Lat/Long Grid