

122°5'W

122°2.5'W

122°W

121°57.5'W

121°55'W

121°52.5'W

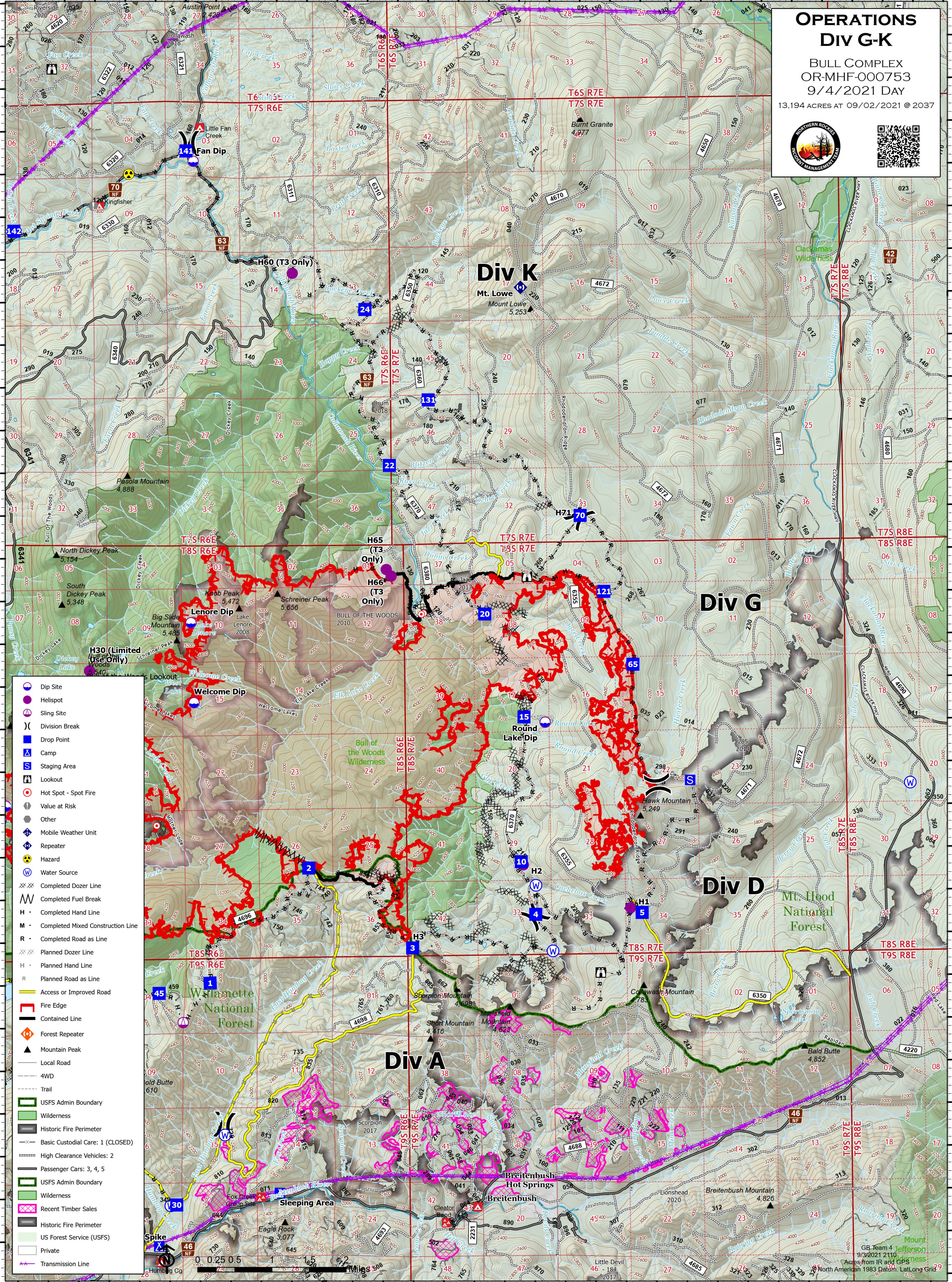
45°N
44°57.5'N
44°55'N
44°52.5'N
44°50'N
44°47.5'N

45°N
44°57.5'N
44°55'N
44°52.5'N
44°50'N
44°47.5'N

OPERATIONS DIV G-K

BULL COMPLEX
OR-MHF-000753
9/4/2021 DAY

13,194 ACRES AT 09/02/2021 © 2037



Div K
Mt. Lowe
Mount Lowe
5,253'

Div G

Div D

Div A

- Dip Site
- Helispot
- Sling Site
- Division Break
- Drop Point
- Camp
- Staging Area
- Lookout
- Hot Spot - Spot Fire
- Value at Risk
- Other
- Mobile Weather Unit
- Repeater
- Hazard
- Water Source
- Completed Dozer Line
- Completed Fuel Break
- Completed Hand Line
- Completed Mixed Construction Line
- Completed Road as Line
- Planned Dozer Line
- Planned Hand Line
- Planned Road as Line
- Access or Improved Road
- Fire Edge
- Contained Line
- Forest Repeater
- Mountain Peak
- Local Road
- 4WD
- Trail
- USFS Admin Boundary
- Wilderness
- Historic Fire Perimeter
- Basic Custodial Care: 1 (CLOSED)
- High Clearance Vehicles: 2
- Passenger Cars: 3, 4, 5
- USFS Admin Boundary
- Wilderness
- Recent Timber Sales
- Historic Fire Perimeter
- US Forest Service (USFS)
- Private
- Transmission Line



GB Team 4 Jefferson
9/3/2021 2110
Acres from IR and GPS
North American 1983 Datum, Lat/Long Crd