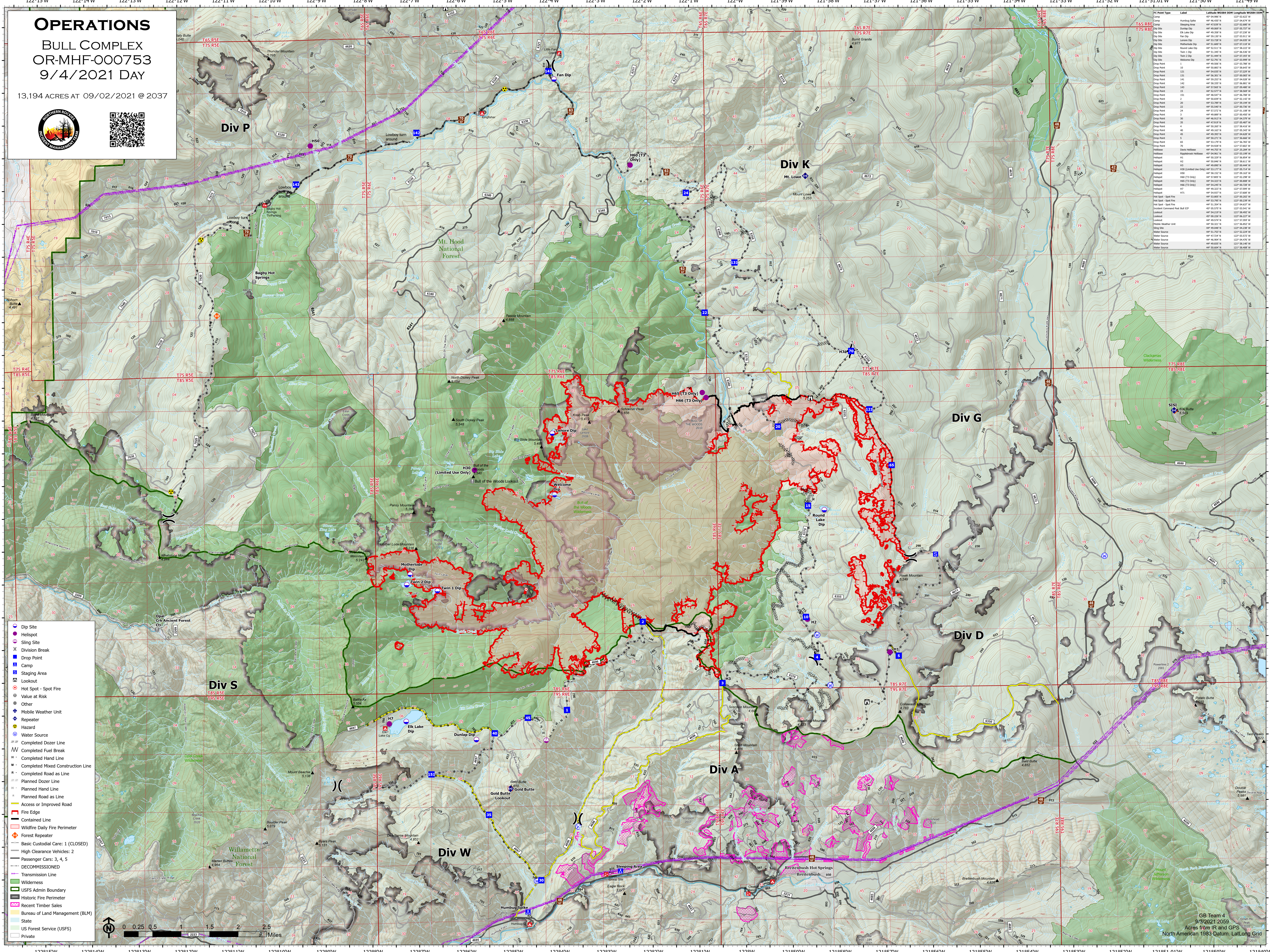


# OPERATIONS

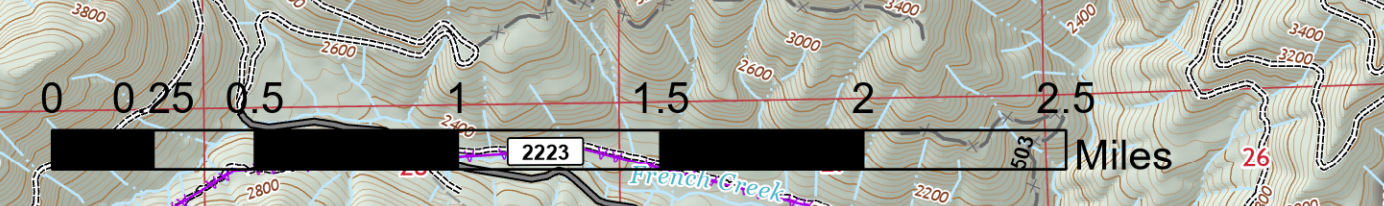
BULL COMPLEX  
OR-MHF-000753  
9/4/2021 DAY

13,194 ACRES AT 09/02/2021 @ 2037



Fire Point Type	Label	Latitude	Longitude	Altitude
Camp	445	44° 54.988' N	122° 01.622' W	1127
Drop Point	446	44° 54.988' N	122° 01.622' W	1127
Drop Point	447	44° 54.988' N	122° 01.622' W	1127
Drop Point	448	44° 54.988' N	122° 01.622' W	1127
Drop Point	449	44° 54.988' N	122° 01.622' W	1127
Drop Point	450	44° 54.988' N	122° 01.622' W	1127
Drop Point	451	44° 54.988' N	122° 01.622' W	1127
Drop Point	452	44° 54.988' N	122° 01.622' W	1127
Drop Point	453	44° 54.988' N	122° 01.622' W	1127
Drop Point	454	44° 54.988' N	122° 01.622' W	1127
Drop Point	455	44° 54.988' N	122° 01.622' W	1127
Drop Point	456	44° 54.988' N	122° 01.622' W	1127
Drop Point	457	44° 54.988' N	122° 01.622' W	1127
Drop Point	458	44° 54.988' N	122° 01.622' W	1127
Drop Point	459	44° 54.988' N	122° 01.622' W	1127
Drop Point	460	44° 54.988' N	122° 01.622' W	1127
Drop Point	461	44° 54.988' N	122° 01.622' W	1127
Drop Point	462	44° 54.988' N	122° 01.622' W	1127
Drop Point	463	44° 54.988' N	122° 01.622' W	1127
Drop Point	464	44° 54.988' N	122° 01.622' W	1127
Drop Point	465	44° 54.988' N	122° 01.622' W	1127
Drop Point	466	44° 54.988' N	122° 01.622' W	1127
Drop Point	467	44° 54.988' N	122° 01.622' W	1127
Drop Point	468	44° 54.988' N	122° 01.622' W	1127
Drop Point	469	44° 54.988' N	122° 01.622' W	1127
Drop Point	470	44° 54.988' N	122° 01.622' W	1127
Drop Point	471	44° 54.988' N	122° 01.622' W	1127
Drop Point	472	44° 54.988' N	122° 01.622' W	1127
Drop Point	473	44° 54.988' N	122° 01.622' W	1127
Drop Point	474	44° 54.988' N	122° 01.622' W	1127
Drop Point	475	44° 54.988' N	122° 01.622' W	1127
Drop Point	476	44° 54.988' N	122° 01.622' W	1127
Drop Point	477	44° 54.988' N	122° 01.622' W	1127
Drop Point	478	44° 54.988' N	122° 01.622' W	1127
Drop Point	479	44° 54.988' N	122° 01.622' W	1127
Drop Point	480	44° 54.988' N	122° 01.622' W	1127
Drop Point	481	44° 54.988' N	122° 01.622' W	1127
Drop Point	482	44° 54.988' N	122° 01.622' W	1127
Drop Point	483	44° 54.988' N	122° 01.622' W	1127
Drop Point	484	44° 54.988' N	122° 01.622' W	1127
Drop Point	485	44° 54.988' N	122° 01.622' W	1127
Drop Point	486	44° 54.988' N	122° 01.622' W	1127
Drop Point	487	44° 54.988' N	122° 01.622' W	1127
Drop Point	488	44° 54.988' N	122° 01.622' W	1127
Drop Point	489	44° 54.988' N	122° 01.622' W	1127
Drop Point	490	44° 54.988' N	122° 01.622' W	1127
Drop Point	491	44° 54.988' N	122° 01.622' W	1127
Drop Point	492	44° 54.988' N	122° 01.622' W	1127
Drop Point	493	44° 54.988' N	122° 01.622' W	1127
Drop Point	494	44° 54.988' N	122° 01.622' W	1127
Drop Point	495	44° 54.988' N	122° 01.622' W	1127
Drop Point	496	44° 54.988' N	122° 01.622' W	1127
Drop Point	497	44° 54.988' N	122° 01.622' W	1127
Drop Point	498	44° 54.988' N	122° 01.622' W	1127
Drop Point	499	44° 54.988' N	122° 01.622' W	1127
Drop Point	500	44° 54.988' N	122° 01.622' W	1127

- Dip Site
- Helispot
- Sling Site
- Division Break
- Drop Point
- Camp
- Staging Area
- Lookout
- Hot Spot - Spot Fire
- Value at Risk
- Other
- Mobile Weather Unit
- Repeater
- Hazard
- Water Source
- Completed Dozer Line
- Completed Fuel Break
- Completed Hand Line
- Completed Mixed Construction Line
- Completed Road as Line
- Planned Dozer Line
- Planned Hand Line
- Planned Road as Line
- Access or Improved Road
- Fire Edge
- Contained Line
- Wildfire Daily Fire Perimeter
- Forest Repeater
- Basic Custodial Care: 1 (CLOSED)
- High Clearance Vehicles: 2
- Passenger Cars: 3, 4, 5
- DECOMMISSIONED
- Transmission Line
- Wilderness
- USFS Admin Boundary
- Historic Fire Perimeter
- Recent Timber Sales
- Bureau of Land Management (BLM)
- State
- US Forest Service (USFS)
- Private



GB Team 4  
9/3/2021 2059  
Acres from IR and GPS  
North American 1983 Datum, LatLong Grid