

122°2.5'W

122°W

121°57.5'W

121°55'W

45°N

45°N

44°57.5'N

44°57.5'N

44°55'N

44°55'N

44°52.5'N

44°52.5'N

44°50'N

44°50'N

# OPERATIONS Div D-G-K

BULL COMPLEX  
OR-MHF-000753  
9/8/2021 DAY

17,962 ACRES AT 9/7/2021 @ 2119

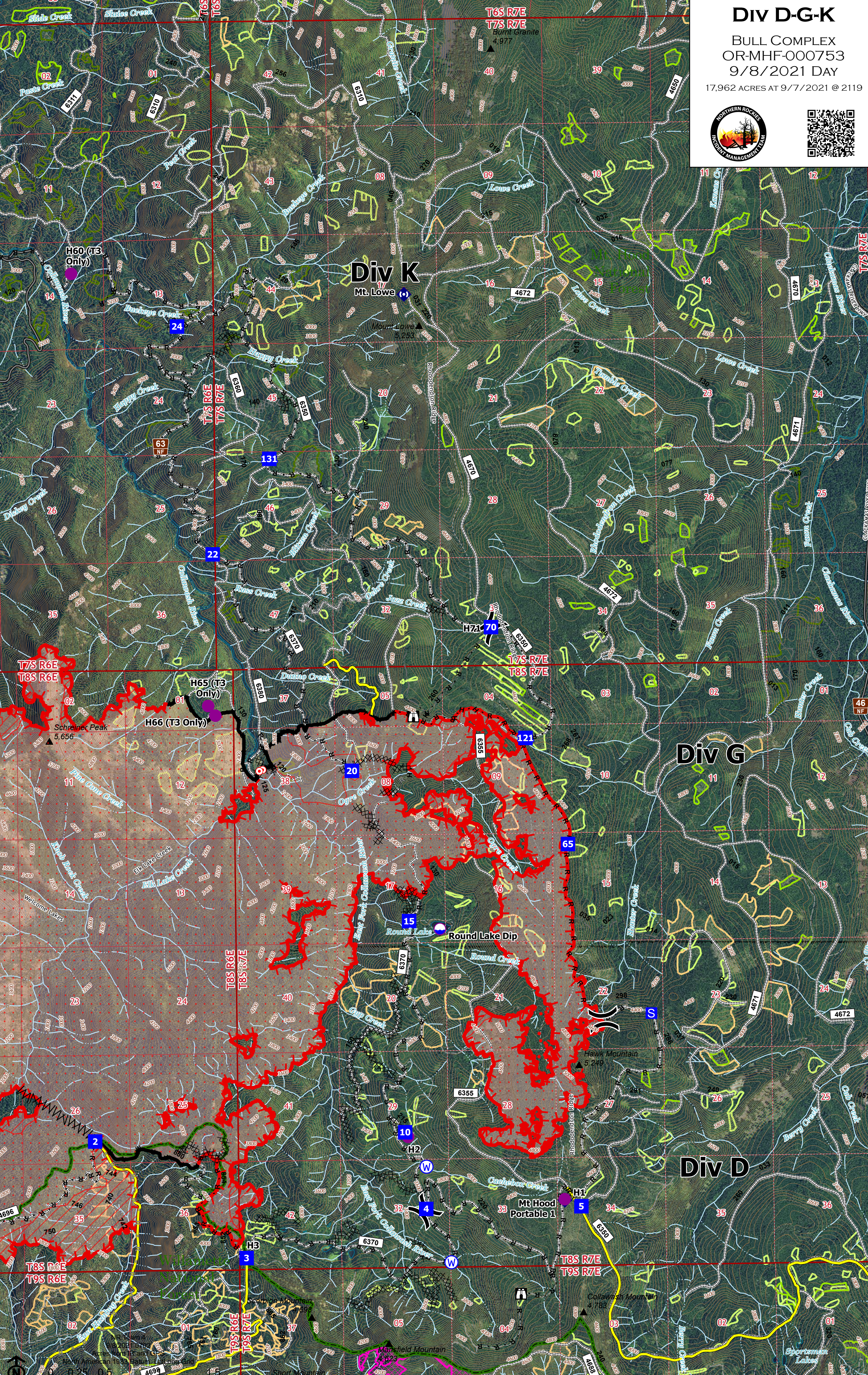


## Div K

Mt. Lowe

## Div G

## Div D



- Dip Site
- Helispot
- Sling Site
- Division Break
- Drop Point
- Staging Area
- Lookout
- Hot Spot - Spot Fire
- Mobile Weather Unit
- Repeater
- Hazard
- Water Source
- IR Isolated Heat Source
- Completed Dozer Line
- Completed Fuel Break
- Completed Hand Line
- Completed Mixed Construction Line
- Completed Road as Line
- Planned Dozer Line
- Planned Hand Line
- Planned Road as Line
- Access or Improved Road
- Fire Edge
- Contained Line
- Wildfire Daily Fire Perimeter
- IR Heat Perimeter
- IR Intense Heat
- IR Scattered Heat
- Forest Repeater
- Mountain Peak
- Trail
- Local Road
- 4WD
- Basic Custodial Care: 1 (CLOSED)
- High Clearance Vehicles: 2
- Passenger Cars: 3, 4, 5
- Transmission Line
- USFS Admin Boundary
- Recent Timber Sales

122°5'W

122°2.5'W

122°W

121°57.5'W

121°55'W