

122°15'W

122°12.5'W

122°10'W

122°7.5'W

122°5'W

45°N

45°N

44°57.5'N

44°57.5'N

44°55'N

44°55'N

44°52.5'N

44°52.5'N

44°50'N

44°50'N

44°50'N

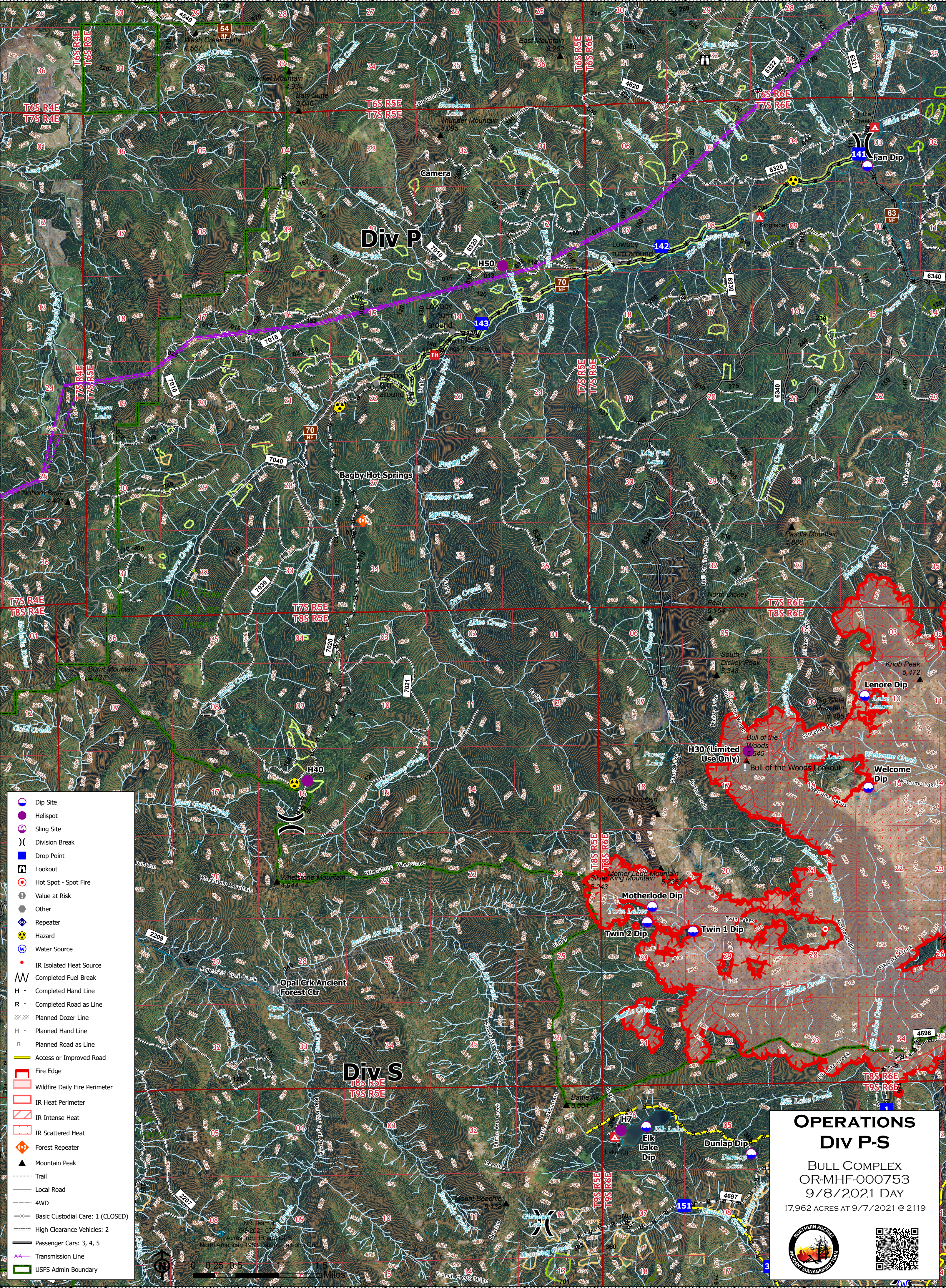
122°15'W

122°12.5'W

122°10'W

122°7.5'W

122°5'W



- Dip Site
- Helispot
- Sling Site
- Division Break
- Drop Point
- Lookout
- Hot Spot - Spot Fire
- Value at Risk
- Other
- Repeater
- Hazard
- Water Source
- IR Isolated Heat Source
- Completed Fuel Break
- Completed Hand Line
- Completed Road as Line
- Planned Dozer Line
- Planned Hand Line
- Planned Road as Line
- Access or Improved Road
- Fire Edge
- Wildfire Daily Fire Perimeter
- IR Heat Perimeter
- IR Intense Heat
- IR Scattered Heat
- Forest Repeater
- Mountain Peak
- Trail
- Local Road
- 4WD
- Basic Custodial Care: 1 (CLOSED)
- High Clearance Vehicles: 2
- Passenger Cars: 3, 4, 5
- Transmission Line
- USFS Admin Boundary

0 0.25 0.5 1 Miles

OPERATIONS
DIV P-S

BULL COMPLEX
OR-MHF-000753
9/8/2021 DAY
17,962 ACRES AT 9/7/2021 @ 2119