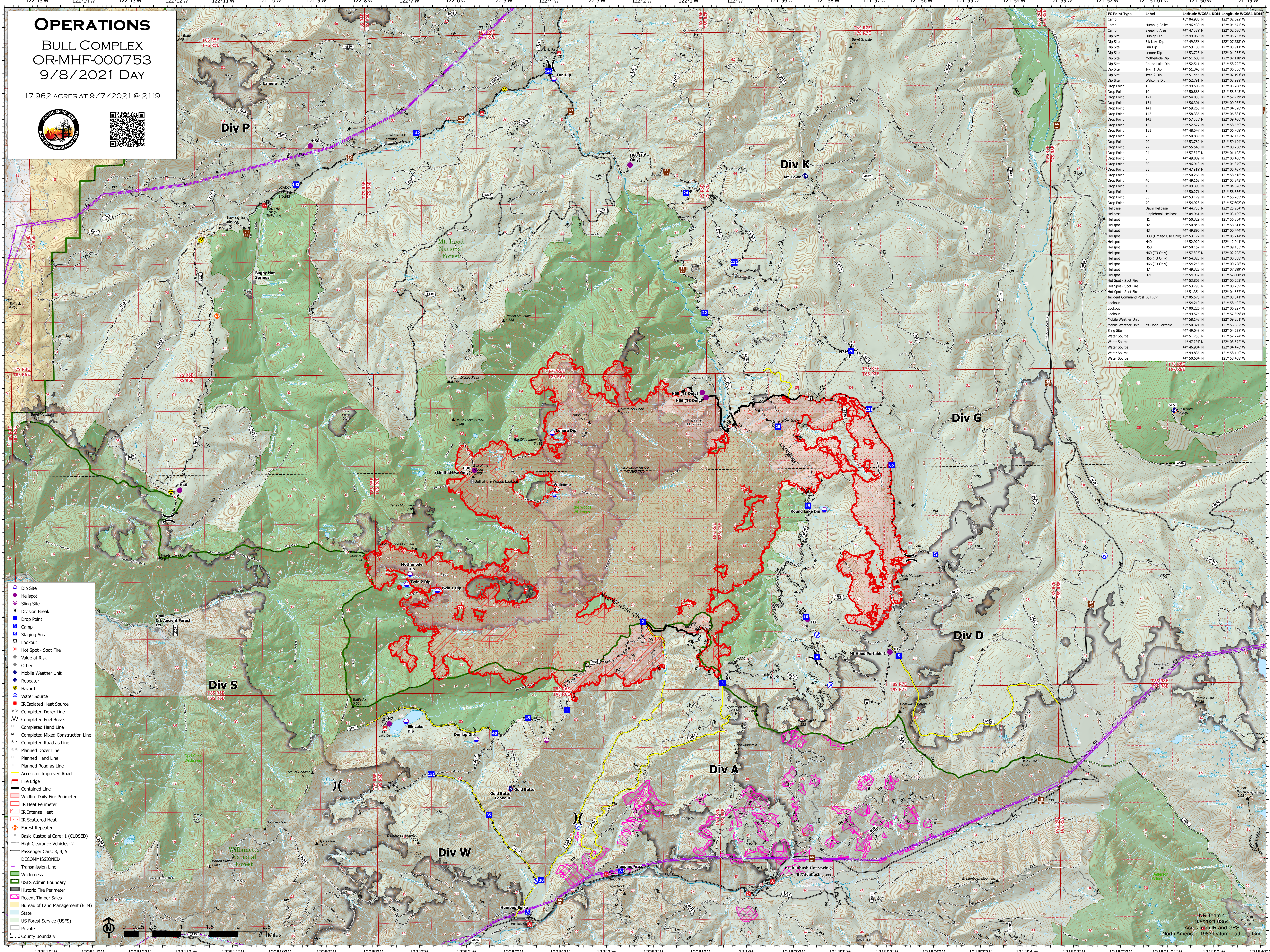


OPERATIONS

BULL COMPLEX
OR-MHF-000753
9/8/2021 DAY

17,962 ACRES AT 9/7/2021 @ 2119



FC Point Type	Label	Latitude WGS84 DDM	Longitude WGS84 DDM
Camp	Humbug Spike	44° 46.430' N	122° 04.674' W
Camp	Sleeping Area	44° 47.039' N	122° 03.680' W
Dip Site	Dunlap Dip	44° 49.069' N	122° 05.737' W
Dip Site	Elk Lake Dip	44° 49.338' N	122° 01.238' W
Dip Site	Fan Dip	44° 59.130' N	122° 03.911' W
Dip Site	Lenore Dip	44° 53.728' N	122° 04.035' W
Dip Site	Motherlode Dip	44° 51.600' N	122° 07.118' W
Dip Site	Round Lake Dip	44° 52.511' N	121° 56.222' W
Dip Site	Twin 1 Dip	44° 51.348' N	122° 06.330' W
Dip Site	Twin 2 Dip	44° 51.444' N	122° 07.193' W
Dip Site	Welcome Dip	44° 52.791' N	122° 03.999' W
Drop Point	1	44° 49.506' N	122° 03.788' W
Drop Point	2	44° 49.338' N	122° 01.147' W
Drop Point	121	44° 54.035' N	121° 57.229' W
Drop Point	131	44° 56.301' N	122° 00.083' W
Drop Point	141	44° 59.253' N	122° 04.028' W
Drop Point	142	44° 49.338' N	122° 01.147' W
Drop Point	143	44° 57.585' N	122° 09.480' W
Drop Point	15	44° 52.577' N	121° 58.569' W
Drop Point	151	44° 48.547' N	122° 06.708' W
Drop Point	2	44° 49.338' N	122° 01.147' W
Drop Point	20	44° 53.789' N	121° 59.194' W
Drop Point	22	44° 55.540' N	122° 00.736' W
Drop Point	24	44° 57.372' N	122° 01.108' W
Drop Point	2	44° 49.889' N	122° 00.400' W
Drop Point	30	44° 48.533' N	122° 04.379' W
Drop Point	35	44° 47.919' N	122° 05.487' W
Drop Point	4	44° 50.265' N	121° 58.416' W
Drop Point	40	44° 49.163' N	122° 05.343' W
Drop Point	45	44° 48.533' N	122° 04.637' W
Drop Point	5	44° 50.271' N	121° 56.666' W
Drop Point	65	44° 53.179' N	121° 56.765' W
Drop Point	70	44° 54.938' N	121° 57.602' W
Helibase	David Hillbase	44° 48.389' N	122° 02.266' W
Helibase	Rippabrook Helibase	45° 04.961' N	122° 03.199' W
Helispot	H1	44° 50.329' N	121° 56.854' W
Helispot	H2	44° 50.846' N	121° 56.611' W
Helispot	H3	44° 49.889' N	122° 00.444' W
Helispot	H30 (Limited Use Only)	44° 53.177' N	122° 05.714' W
Helispot	H40	44° 52.920' N	122° 12.041' W
Helispot	H50	44° 58.152' N	122° 09.163' W
Helispot	H60 (T3 Only)	44° 57.805' N	122° 02.298' W
Helispot	H65 (T3 Only)	44° 54.323' N	122° 00.889' W
Helispot	H66 (T3 Only)	44° 54.245' N	122° 00.728' W
Helispot	H7	44° 49.323' N	122° 07.599' W
Helispot	H71	44° 54.937' N	121° 57.608' W
Hot Spot - Spot Fire	Hot Spot - Spot Fire	44° 53.898' N	122° 00.203' W
Hot Spot - Spot Fire	Hot Spot - Spot Fire	44° 53.795' N	122° 00.239' W
Hot Spot - Spot Fire	Hot Spot - Spot Fire	44° 51.354' N	122° 04.637' W
Incident Command Post BCP	Incident Command Post BCP	45° 05.575' N	122° 03.541' W
Lookout	Lookout	44° 53.898' N	122° 00.203' W
Lookout	Lookout	45° 00.238' N	122° 06.227' W
Lookout	Lookout	44° 49.574' N	121° 57.359' W
Mobile Weather Unit	Mobile Weather Unit	44° 58.148' N	122° 09.201' W
Mobile Weather Unit	Mt Hood Portable 1	44° 50.321' N	121° 56.852' W
Sling Site	Sling Site	44° 49.348' N	122° 04.238' W
Water Source	Water Source	44° 51.753' N	121° 52.224' W
Water Source	Water Source	44° 47.724' N	122° 03.572' W
Water Source	Water Source	44° 46.904' N	122° 04.476' W
Water Source	Water Source	44° 48.835' N	121° 58.140' W
Water Source	Water Source	44° 50.694' N	121° 58.408' W

- Dip Site
- Helispot
- Sling Site
- Division Break
- Drop Point
- Camp
- Staging Area
- Lookout
- Hot Spot - Spot Fire
- Value at Risk
- Other
- Mobile Weather Unit
- Repeater
- Hazard
- Water Source
- IR Isolated Heat Source
- Completed Dozer Line
- Completed Fuel Break
- Completed Hand Line
- Completed Mixed Construction Line
- Completed Road as Line
- Planned Dozer Line
- Planned Hand Line
- Planned Road as Line
- Access or Improved Road
- Fire Edge
- Contained Fire
- Wildfire Daily Fire Perimeter
- IR Heat Perimeter
- IR Intense Heat
- IR Scattered Heat
- Forest Repeater
- Basic Custodial Care: 1 (CLOSED)
- High Clearance Vehicles: 2
- Passenger Cars: 3, 4, 5
- DECOMMISSIONED
- Transmission Line
- Wilderness
- USFS Admin Boundary
- Historic Fire Perimeter
- Recent Timber Sales
- Bureau of Land Management (BLM)
- State
- US Forest Service (USFS)
- Private
- County Boundary



NR Team 4
9/8/2021 0354
Acres from IR and GPS
North American 1983 Datum, Lat/Long Grid