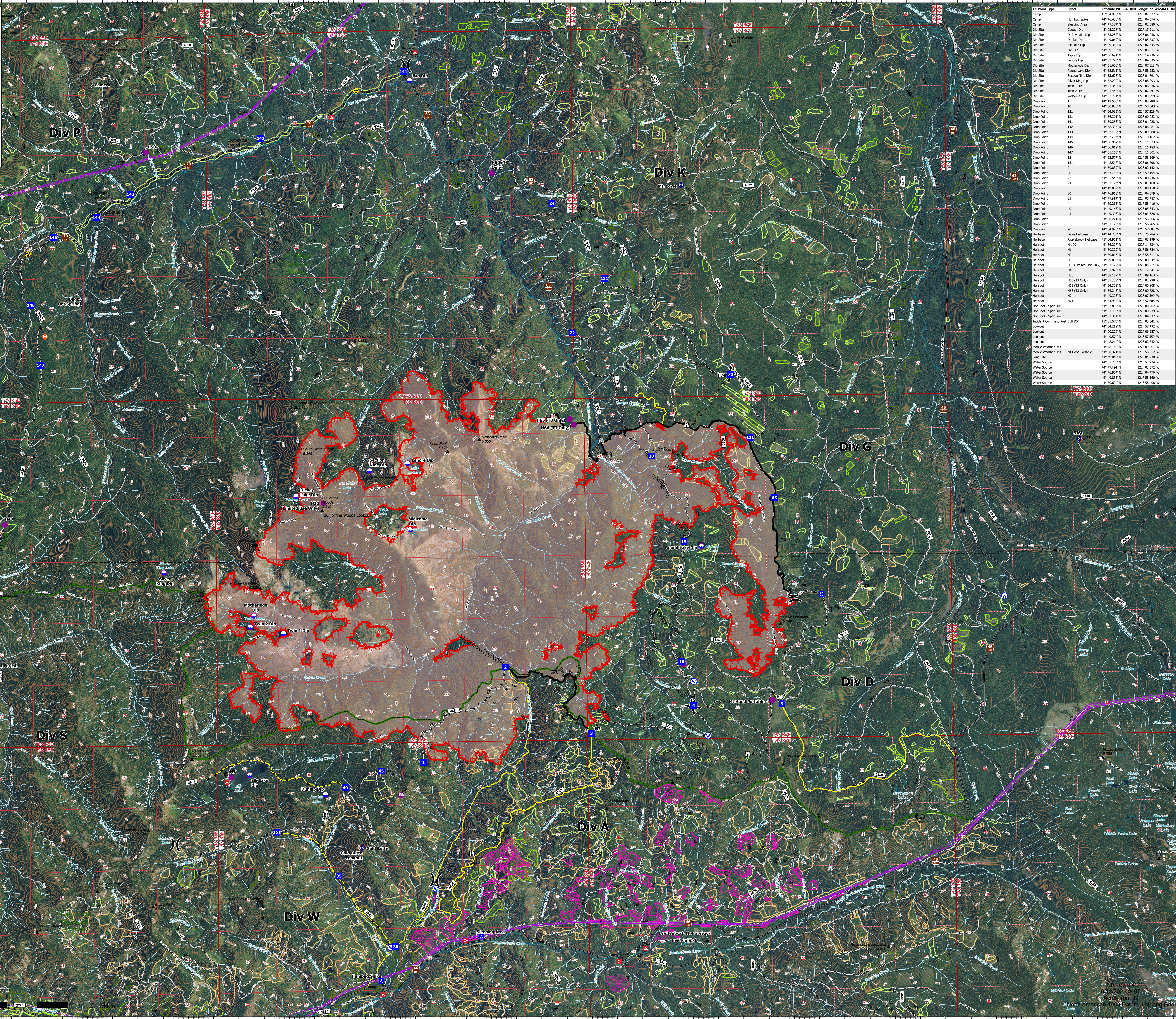


OPERATIONS

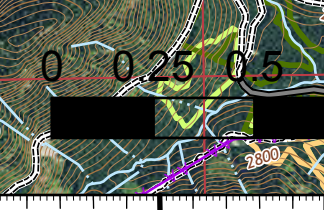
BULL COMPLEX
OR-MHF-000753
9/12/2021 DAY

19,349 ACRES AT 9/8/2021 @ 2131



FC Point Type	Label	Latitude WGS84 DOM	Longitude WGS84 DOM
Camp	Humbog Spike	44° 46.430' N	122° 04.624' W
Camp	Staging Area	44° 53.228' N	122° 02.607' W
Dip Site	Cooper Dip	45° 02.228' N	122° 15.911' W
Dip Site	Dickey Lake Dip	44° 53.282' N	122° 06.258' W
Dip Site	Dunlap Dip	44° 49.889' N	122° 05.517' W
Dip Site	Elk Lake Dip	44° 49.358' N	122° 07.236' W
Dip Site	Fan Dip	44° 59.139' N	122° 03.911' W
Dip Site	Jones Dip	44° 56.096' N	122° 04.018' W
Dip Site	Lenore Dip	44° 53.728' N	122° 04.635' W
Dip Site	Motherlode Dip	44° 51.600' N	122° 07.118' W
Dip Site	Round Lake Dip	44° 52.511' N	122° 08.222' W
Dip Site	Section Nine Dip	44° 53.628' N	122° 04.791' W
Dip Site	Silver King Dip	44° 52.220' N	122° 08.893' W
Dip Site	Twin 1 Dip	44° 52.945' N	122° 02.288' W
Dip Site	Twin 2 Dip	44° 51.444' N	122° 07.193' W
Dip Site	Welcome Dip	44° 52.791' N	122° 03.999' W
Drop Point	10	44° 50.883' N	121° 58.643' W
Drop Point	121	44° 54.035' N	121° 57.229' W
Drop Point	131	44° 52.201' N	122° 08.801' W
Drop Point	141	44° 59.253' N	122° 04.628' W
Drop Point	142	44° 58.303' N	122° 06.881' W
Drop Point	143	44° 57.965' N	122° 11.823' W
Drop Point	144	44° 57.242' N	122° 10.162' W
Drop Point	145	44° 56.867' N	122° 11.023' W
Drop Point	146	44° 55.577' N	122° 11.807' W
Drop Point	147	44° 55.185' N	122° 11.301' W
Drop Point	15	44° 52.577' N	122° 08.288' W
Drop Point	151	44° 48.547' N	122° 06.508' W
Drop Point	2	44° 50.839' N	122° 03.142' W
Drop Point	24	44° 57.372' N	122° 01.108' W
Drop Point	25	44° 50.889' N	122° 01.487' W
Drop Point	26	44° 55.940' N	122° 00.730' W
Drop Point	28	44° 57.372' N	122° 03.142' W
Drop Point	30	44° 46.913' N	122° 04.379' W
Drop Point	35	44° 47.919' N	122° 05.467' W
Drop Point	4	44° 50.285' N	121° 58.616' W
Drop Point	40	44° 49.163' N	122° 05.343' W
Drop Point	45	44° 49.397' N	122° 04.628' W
Drop Point	5	44° 50.271' N	121° 56.646' W
Drop Point	65	44° 53.179' N	121° 56.765' W
Drop Point	70	44° 54.528' N	121° 57.602' W
Helibase	Davis Helibase	44° 46.723' N	122° 02.288' W
Helibase	Rippledock Helibase	45° 04.961' N	122° 03.199' W
Helipod	H-100	44° 56.227' N	122° 14.634' W
Helipod	H1	44° 50.237' N	121° 56.954' W
Helipod	H2	44° 50.846' N	121° 58.611' W
Helipod	H3 (Limited Use Only)	44° 53.177' N	122° 08.444' W
Helipod	H4	44° 49.997' N	122° 08.444' W
Helipod	H5	44° 52.920' N	122° 12.041' W
Helipod	H55	44° 58.152' N	122° 09.383' W
Helipod	H56 (T3 Only)	44° 57.892' N	122° 02.288' W
Helipod	H56 (T3 Only)	44° 54.323' N	122° 08.808' W
Helipod	H56 (T3 Only)	44° 54.285' N	122° 03.288' W
Helipod	H7	44° 49.323' N	122° 05.999' W
Helipod	H7L	44° 54.937' N	121° 57.608' W
Hot Spot - Spot Fire	Hot Spot - Spot Fire	44° 53.895' N	122° 08.202' W
Hot Spot - Spot Fire	Hot Spot - Spot Fire	44° 53.795' N	122° 00.239' W
Hot Spot - Spot Fire	Hot Spot - Spot Fire	44° 51.354' N	122° 04.637' W
Lookout	Lookout Command Post, Bus ICP	45° 05.278' N	122° 03.241' W
Lookout	Lookout	44° 54.219' N	121° 58.492' W
Lookout	Lookout	45° 05.220' N	122° 05.227' W
Lookout	Lookout	44° 49.219' N	121° 57.288' W
Lookout	Lookout	44° 48.214' N	122° 03.482' W
Mobile Weather Unit	Mobile Weather Unit	44° 58.149' N	122° 09.201' W
Mobile Weather Unit	Mobile Weather Unit	44° 50.237' N	121° 56.816' W
Slip Site	Slip Site	44° 49.048' N	122° 04.238' W
Water Source	Water Source	44° 51.723' N	121° 52.224' W
Water Source	Water Source	44° 47.214' N	122° 03.512' W
Water Source	Water Source	44° 46.904' N	122° 04.476' W
Water Source	Water Source	44° 49.033' N	121° 58.140' W
Water Source	Water Source	44° 50.604' N	121° 58.208' W

- Dip Site
- Helispot
- Slip Site
- Division Break
- Drop Point
- Camp
- Staging Area
- Lookout
- Hot Spot - Spot Fire
- Value at Risk
- Other
- Mobile Weather Unit
- Repeater
- Hazard
- Water Source
- Completed Dozer Line
- Completed Fuel Break
- Completed Hand Line
- Completed Mixed Construction Line
- Planned Dozer Line
- Planned Hand Line
- Planned Road as Line
- Access or Improved Road
- Fire Edge
- Contained Line
- Wildfire Daily Fire Perimeter
- Forest Repeater
- Basic Custodial Care: 1 (CLOSED)
- High Clearance Vehicles: 2
- Passenger Cars: 3, 4, 5
- DECOMMISSIONED
- Transmission Line
- USFS Admin Boundary
- Recent Timber Sales



NR Team 1
9/12/2021 0407
Acres from IR
North American 1983 Datum, Lat/Long Grid