

122°15'W

122°12.5'W

122°10'W

122°7.5'W

122°5'W

45°N

45°N

44°57.5'N

44°57.5'N

44°55'N

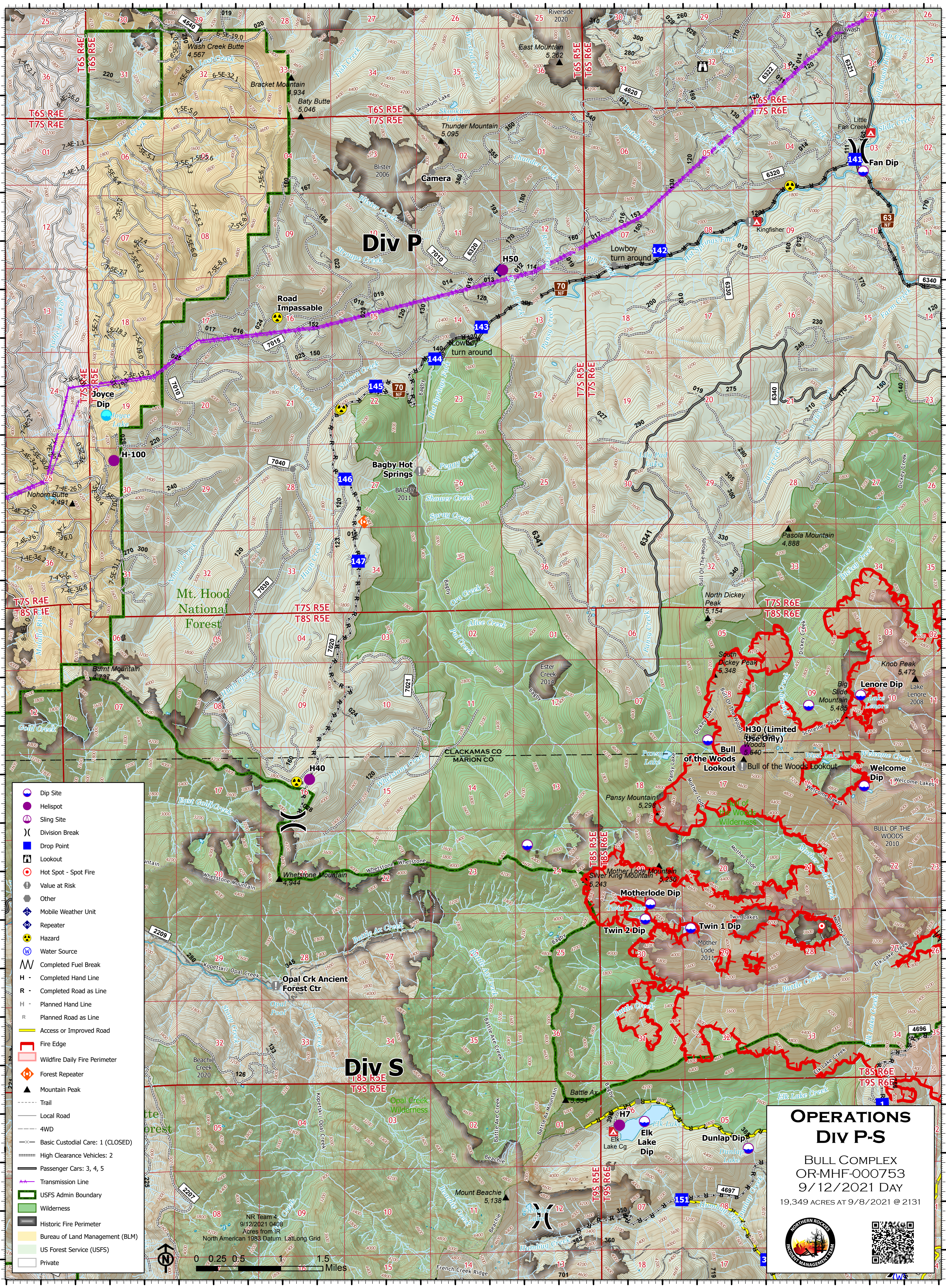
44°55'N

44°52.5'N

44°52.5'N

44°50'N

44°50'N



- Dip Site
- Helispot
- Sling Site
- Division Break
- Drop Point
- Lookout
- Hot Spot - Spot Fire
- Value at Risk
- Other
- Mobile Weather Unit
- Repeater
- Hazard
- Water Source
- Completed Fuel Break
- Completed Hand Line
- Completed Road as Line
- Planned Hand Line
- Planned Road as Line
- Access or Improved Road
- Fire Edge
- Wildfire Daily Fire Perimeter
- Forest Repeater
- Mountain Peak
- Trail
- Local Road
- 4WD
- Basic Custodial Care: 1 (CLOSED)
- High Clearance Vehicles: 2
- Passenger Cars: 3, 4, 5
- Transmission Line
- USFS Admin Boundary
- Wilderness
- Historic Fire Perimeter
- Bureau of Land Management (BLM)
- US Forest Service (USFS)
- Private

NR Team 4
9/12/2021 0408
Acres from IR
North American 1983 Datum, Lat/Long Grid



OPERATIONS DIV P-S

BULL COMPLEX
OR-MHF-000753
9/12/2021 DAY
19,349 ACRES AT 9/8/2021 @ 2131