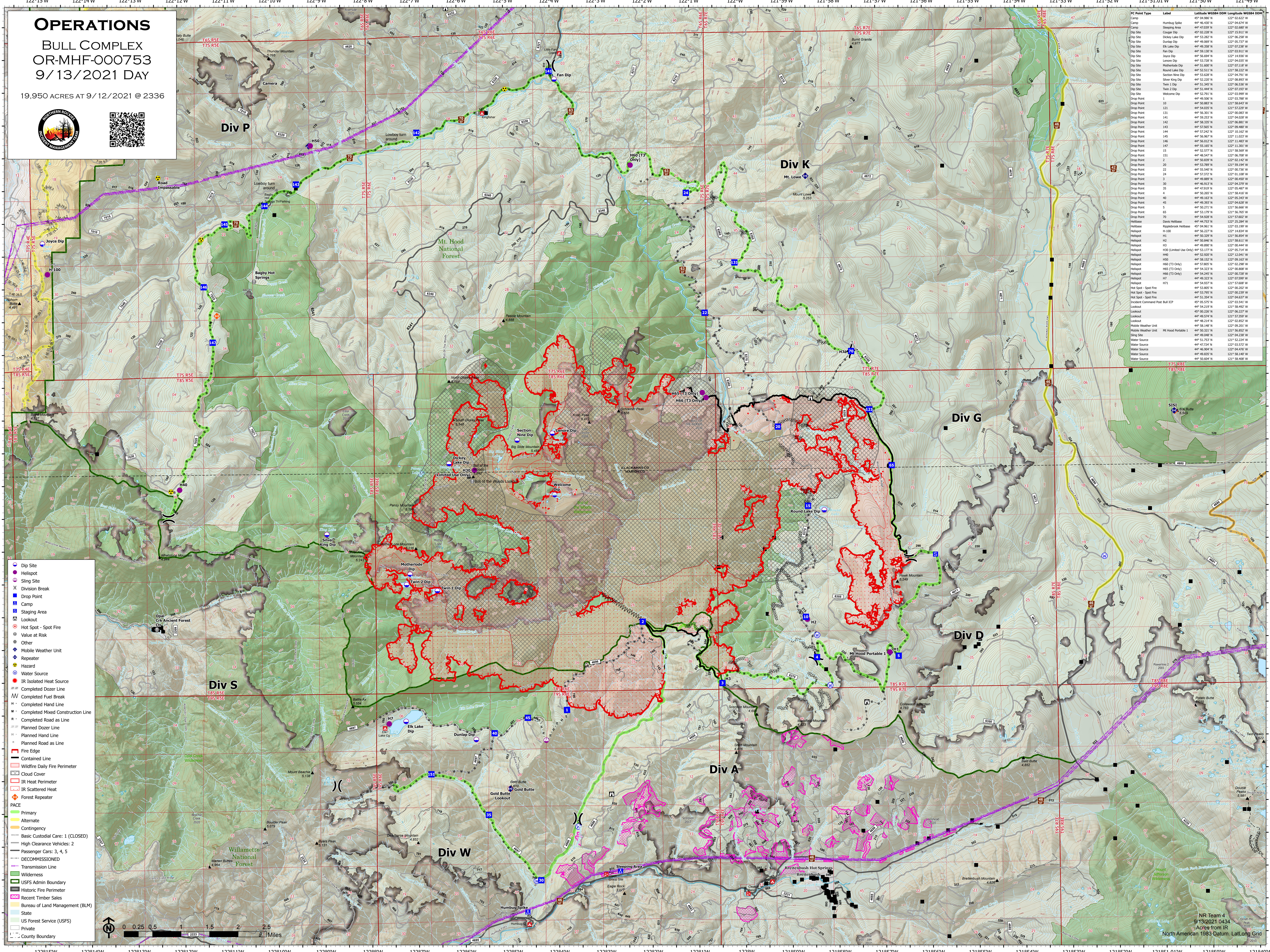


# OPERATIONS

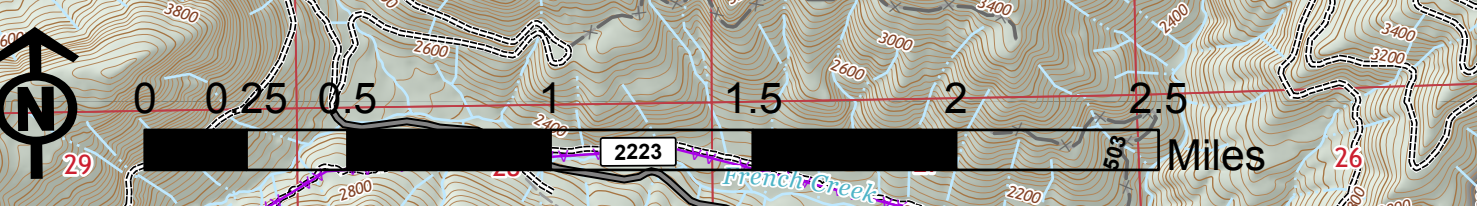
## BULL COMPLEX OR-MHF-000753 9/13/2021 DAY

19,950 ACRES AT 9/12/2021 @ 2336



- Dip Site
- Helispot
- Sling Site
- Division Break
- Drop Point
- Camp
- Staging Area
- Lookout
- Hot Spot - Spot Fire
- Value at Risk
- Other
- Mobile Weather Unit
- Repeater
- Hazard
- Water Source
- IR Isolated Heat Source
- Completed Dozer Line
- Completed Fuel Break
- Completed Hand Line
- Completed Mixed Construction Line
- Planned Dozer Line
- Planned Hand Line
- Planned Road as Line
- Fire Edge
- Contained Line
- Wildfire Daily Fire Perimeter
- Cloud Cover
- IR Heat Perimeter
- IR Scattered Heat
- Forest Repeater
- PACE
  - Primary
  - Alternate
  - Contingency
- Basic Custodial Care: 1 (CLOSED)
- High Clearance Vehicles: 2
- Passenger Cars: 3, 4, 5
- DECOMMISSIONED
- Transmission Line
- Wilderness
- USFS Admin Boundary
- Historic Fire Perimeter
- Recent Timber Sales
- Bureau of Land Management (BLM)
- State
- US Forest Service (USFS)
- Private
- County Boundary

PC Point Type	Label	Latitude WGS84 DEM	Longitude WGS84 DEM
Camp	Humburg Spike	44° 46.430' N	122° 04.624' W
Camp	Sleeping Area	44° 51.961' N	122° 02.204' W
Drop Site	Cooper Dip	44° 02.228' N	122° 15.911' W
Drop Site	Dickey Lake Dip	44° 53.282' N	122° 06.258' W
Drop Site	Dunlap Dip	44° 49.889' N	122° 05.377' W
Drop Site	Elk Lake Dip	44° 49.398' N	122° 02.936' W
Drop Site	Fan Dip	44° 59.130' N	122° 03.911' W
Drop Site	Joyce Dip	44° 52.279' N	122° 14.520' W
Drop Site	Lenore Dip	44° 53.728' N	122° 04.635' W
Drop Site	Motherlode Dip	44° 51.600' N	122° 07.118' W
Drop Site	Round Lake Dip	44° 53.628' N	122° 11.822' W
Drop Site	Section Nine Dip	44° 53.628' N	122° 04.791' W
Drop Site	Silver King Dip	44° 52.202' N	122° 08.893' W
Drop Site	Twin 1 Dip	44° 49.398' N	122° 06.258' W
Drop Site	Twin 2 Dip	44° 51.444' N	122° 07.593' W
Drop Site	Welcome Dip	44° 52.791' N	122° 03.999' W
Drop Point	10	44° 50.883' N	121° 58.643' W
Drop Point	121	44° 54.033' N	121° 57.229' W
Drop Point	131	44° 53.279' N	122° 05.914' W
Drop Point	141	44° 59.253' N	122° 04.028' W
Drop Point	142	44° 58.303' N	122° 06.881' W
Drop Point	143	44° 52.565' N	122° 09.907' W
Drop Point	144	44° 57.242' N	122° 10.162' W
Drop Point	145	44° 56.967' N	122° 11.623' W
Drop Point	146	44° 52.565' N	122° 11.822' W
Drop Point	147	44° 55.185' N	122° 11.301' W
Drop Point	15	44° 52.579' N	122° 11.822' W
Drop Point	151	44° 48.547' N	122° 06.508' W
Drop Point	2	44° 50.839' N	122° 03.142' W
Drop Point	24	44° 57.372' N	122° 01.108' W
Drop Point	3	44° 52.579' N	122° 11.822' W
Drop Point	30	44° 46.913' N	122° 00.730' W
Drop Point	35	44° 57.372' N	122° 05.467' W
Drop Point	4	44° 50.205' N	121° 58.509' W
Drop Point	40	44° 49.163' N	122° 05.343' W
Drop Point	45	44° 49.397' N	122° 04.628' W
Drop Point	5	44° 50.205' N	121° 58.509' W
Drop Point	65	44° 53.179' N	121° 56.765' W
Drop Point	70	44° 54.538' N	121° 57.602' W
Helibase	Davis Helibase	44° 46.212' N	122° 02.887' W
Helibase	Rippledock Helibase	44° 04.961' N	122° 03.199' W
Helispot	H-100	44° 56.227' N	122° 14.634' W
Helispot	H1	44° 50.232' N	121° 58.504' W
Helispot	H2	44° 50.840' N	121° 58.611' W
Helispot	H3	44° 49.897' N	122° 00.444' W
Helispot	H30 (Limited Use Only)	44° 53.177' N	122° 05.514' W
Helispot	H40	44° 52.930' N	122° 12.041' W
Helispot	H50	44° 58.120' N	122° 09.383' W
Helispot	H55 (T3 Only)	44° 57.802' N	122° 02.208' W
Helispot	H60 (T3 Only)	44° 54.323' N	122° 00.808' W
Helispot	H65 (T3 Only)	44° 54.285' N	122° 00.708' W
Helispot	H7	44° 49.323' N	122° 05.599' W
Helispot	H71	44° 54.937' N	121° 57.608' W
Hot Spot - Spot Fire	Hot Spot - Spot Fire	44° 53.975' N	122° 00.239' W
Hot Spot - Spot Fire	Hot Spot - Spot Fire	44° 51.354' N	122° 04.637' W
Lookout	Lookout Command Post, Bull ICP	44° 54.219' N	121° 58.492' W
Lookout	Lookout	44° 00.220' N	122° 06.327' W
Lookout	Lookout	44° 49.578' N	122° 12.309' W
Lookout	Lookout	44° 48.214' N	122° 02.852' W
Mobile Weather Unit	Mobile Weather Unit	44° 58.148' N	122° 09.201' W
Mobile Weather Unit	Mobile Weather Unit	44° 50.232' N	121° 58.504' W
Slip Site	Slip Site	44° 49.048' N	122° 04.238' W
Water Source	Water Source	44° 51.723' N	121° 52.224' W
Water Source	Water Source	44° 47.214' N	122° 03.372' W
Water Source	Water Source	44° 46.904' N	122° 04.476' W
Water Source	Water Source	44° 49.833' N	121° 58.140' W
Water Source	Water Source	44° 50.804' N	121° 58.208' W



NR Team 4  
9/13/2021 0434  
Acres from IR  
North American 1983 Datum, Lat/Long Grid