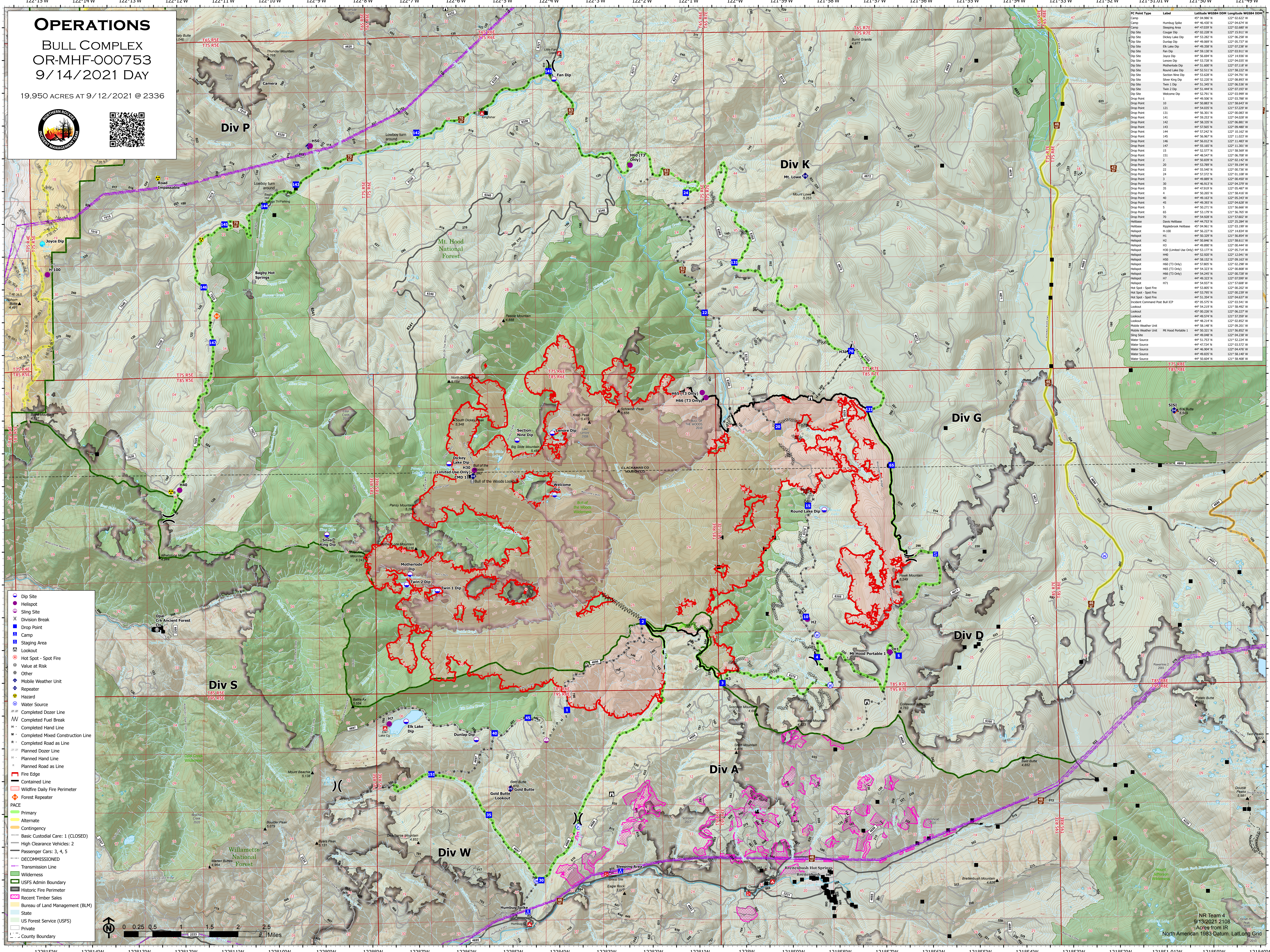


OPERATIONS

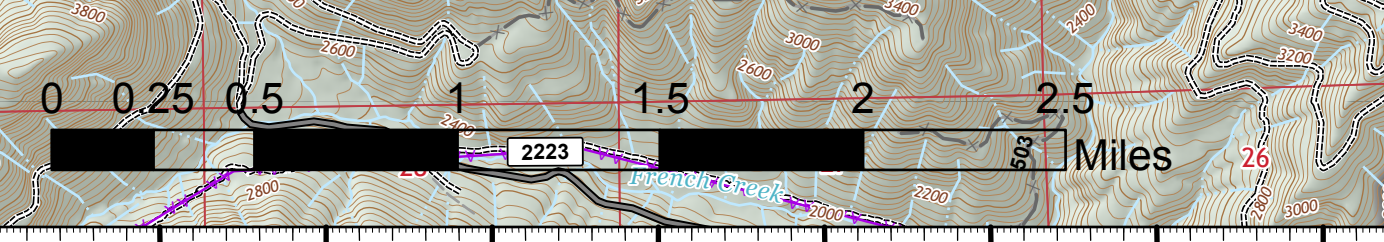
BULL COMPLEX OR-MHF-000753 9/14/2021 DAY

19,950 ACRES AT 9/12/2021 @ 2336



| PC Point Type | Label | Latitude WGS84 DOM | Longitude WGS84 DOM |
|----------------------|--------------------------------|--------------------|---------------------|
| Camp | Humbog Spike | 44° 46.430' N | 122° 04.274' W |
| Staging Area | Staging Area | 44° 52.228' N | 122° 02.228' W |
| Dip Site | Dickey Lake Dip | 44° 53.282' N | 122° 06.258' W |
| Dip Site | Dunlap Dip | 44° 49.889' N | 122° 05.277' W |
| Dip Site | Elk Lake Dip | 44° 49.398' N | 122° 02.236' W |
| Dip Site | Fan Dip | 44° 59.139' N | 122° 03.911' W |
| Dip Site | Joyce Dip | 44° 52.228' N | 122° 04.635' W |
| Dip Site | Lenore Dip | 44° 53.728' N | 122° 04.635' W |
| Dip Site | Motherlode Dip | 44° 51.600' N | 122° 07.118' W |
| Dip Site | Round Lake Dip | 44° 53.628' N | 122° 08.222' W |
| Dip Site | Section Nine Dip | 44° 53.628' N | 122° 04.791' W |
| Dip Site | Silver King Dip | 44° 52.220' N | 122° 08.893' W |
| Dip Site | Twin 1 Dip | 44° 51.444' N | 122° 06.208' W |
| Dip Site | Twin 2 Dip | 44° 51.444' N | 122° 07.593' W |
| Dip Site | Welcome Dip | 44° 52.791' N | 122° 03.999' W |
| Drop Point | 10 | 44° 50.883' N | 121° 58.643' W |
| Drop Point | 121 | 44° 54.033' N | 121° 57.229' W |
| Drop Point | 131 | 44° 52.228' N | 122° 02.228' W |
| Drop Point | 141 | 44° 59.253' N | 122° 04.635' W |
| Drop Point | 142 | 44° 58.303' N | 122° 06.881' W |
| Drop Point | 143 | 44° 52.228' N | 122° 08.222' W |
| Drop Point | 144 | 44° 57.242' N | 122° 10.162' W |
| Drop Point | 145 | 44° 56.867' N | 122° 11.623' W |
| Drop Point | 146 | 44° 52.228' N | 122° 11.623' W |
| Drop Point | 147 | 44° 55.185' N | 122° 11.301' W |
| Drop Point | 15 | 44° 52.228' N | 122° 08.222' W |
| Drop Point | 151 | 44° 48.547' N | 122° 06.208' W |
| Drop Point | 2 | 44° 50.839' N | 122° 03.142' W |
| Drop Point | 24 | 44° 57.372' N | 122° 01.108' W |
| Drop Point | 3 | 44° 52.228' N | 122° 05.467' W |
| Drop Point | 30 | 44° 46.913' N | 122° 04.379' W |
| Drop Point | 35 | 44° 47.919' N | 122° 05.467' W |
| Drop Point | 4 | 44° 50.205' N | 121° 58.643' W |
| Drop Point | 40 | 44° 49.163' N | 122° 05.343' W |
| Drop Point | 45 | 44° 49.397' N | 122° 04.635' W |
| Drop Point | 5 | 44° 52.228' N | 121° 58.643' W |
| Drop Point | 65 | 44° 53.179' N | 121° 56.765' W |
| Drop Point | 70 | 44° 54.538' N | 121° 57.602' W |
| Helibase | Davis Helibase | 44° 46.212' N | 122° 02.228' W |
| Helibase | Rippledock Helibase | 44° 46.961' N | 122° 03.199' W |
| Helispot | H-100 | 44° 56.227' N | 122° 14.634' W |
| Helispot | H1 | 44° 50.228' N | 121° 58.643' W |
| Helispot | H2 | 44° 50.840' N | 121° 58.611' W |
| Helispot | H3 | 44° 49.897' N | 122° 00.444' W |
| Helispot | H30 (Limited Use Only) | 44° 53.177' N | 122° 05.214' W |
| Helispot | H40 | 44° 52.930' N | 122° 12.041' W |
| Helispot | H50 | 44° 58.120' N | 122° 09.382' W |
| Helispot | H60 (T3 Only) | 44° 57.802' N | 122° 02.208' W |
| Helispot | H65 (T3 Only) | 44° 54.323' N | 122° 03.808' W |
| Helispot | H66 (T3 Only) | 44° 54.285' N | 122° 03.208' W |
| Helispot | H7 | 44° 49.323' N | 122° 03.599' W |
| Helispot | H71 | 44° 54.937' N | 121° 57.608' W |
| Hot Spot - Spot Fire | Hot Spot - Spot Fire | 44° 53.577' N | 122° 02.236' W |
| Hot Spot - Spot Fire | Hot Spot - Spot Fire | 44° 53.795' N | 122° 00.239' W |
| Hot Spot - Spot Fire | Hot Spot - Spot Fire | 44° 51.354' N | 122° 04.637' W |
| Lookout | Lookout Command Post, Bull ICP | 44° 52.228' N | 122° 03.911' W |
| Lookout | Lookout | 44° 54.219' N | 121° 58.492' W |
| Lookout | Lookout | 44° 50.220' N | 122° 05.327' W |
| Lookout | Lookout | 44° 49.219' N | 122° 03.208' W |
| Lookout | Lookout | 44° 48.214' N | 122° 03.852' W |
| Mobile Weather Unit | Mobile Weather Unit | 44° 58.148' N | 122° 09.201' W |
| Mobile Weather Unit | Mobile Weather Unit | 44° 50.228' N | 121° 58.643' W |
| Slip Site | Slip Site | 44° 49.048' N | 122° 04.238' W |
| Water Source | Water Source | 44° 51.723' N | 121° 52.224' W |
| Water Source | Water Source | 44° 47.214' N | 122° 03.327' W |
| Water Source | Water Source | 44° 46.904' N | 122° 04.476' W |
| Water Source | Water Source | 44° 49.833' N | 121° 58.340' W |
| Water Source | Water Source | 44° 50.840' N | 121° 58.408' W |

- Dip Site
- Helispot
- Slip Site
- Division Break
- Drop Point
- Camp
- Staging Area
- Lookout
- Hot Spot - Spot Fire
- Value at Risk
- Other
- Mobile Weather Unit
- Repeater
- Hazard
- Water Source
- Completed Dozer Line
- Completed Fuel Break
- Completed Hand Line
- Completed Mixed Construction Line
- Completed Road as Line
- Planned Dozer Line
- Planned Hand Line
- Planned Road as Line
- Fire Edge
- Contained Line
- Wildfire Daily Fire Perimeter
- Forest Repeater
- PACE
- Primary
- Alternate
- Contingency
- Basic Custodial Care: 1 (CLOSED)
- High Clearance Vehicles: 2
- Passenger Cars: 3, 4, 5
- DECOMMISSIONED
- Transmission Line
- Wilderness
- USFS Admin Boundary
- Historic Fire Perimeter
- Recent Timber Sales
- Bureau of Land Management (BLM)
- State
- US Forest Service (USFS)
- Private
- County Boundary



NR Team 4
9/13/2021 2108
Acres from IR
North American 1983 Datum, LatLong Grid