

122°2.5'W

122°W

121°57.5'W

121°55'W

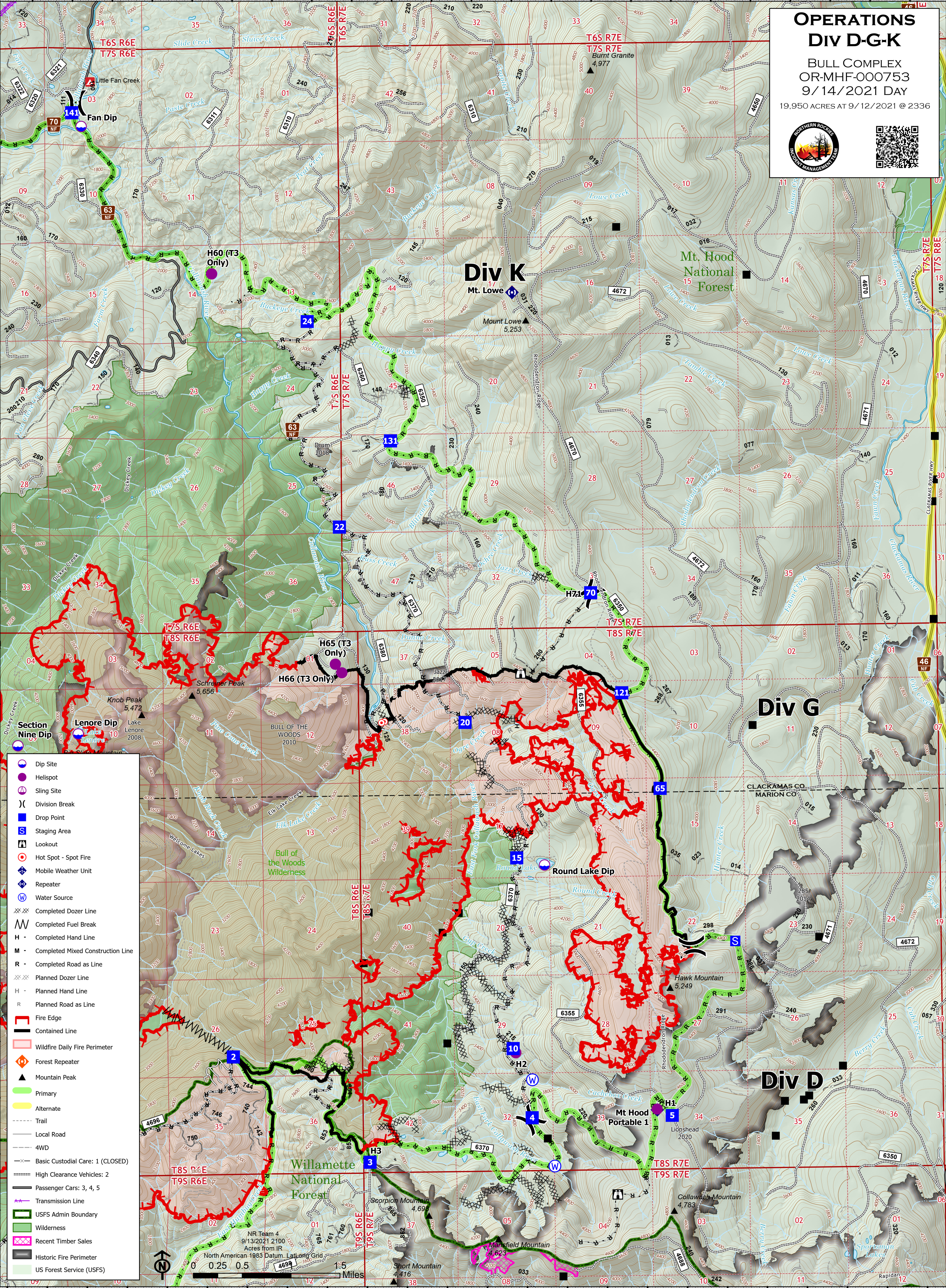
45°N
44°57.5'N
44°55'N
44°52.5'N
44°50'N

45°N
44°57.5'N
44°55'N
44°52.5'N
44°50'N

OPERATIONS Div D-G-K

BULL COMPLEX
OR-MHF-000753
9/14/2021 DAY

19,950 ACRES AT 9/12/2021 @ 2336



- Dip Site
- Helispot
- Sling Site
- Division Break
- Drop Point
- Staging Area
- Lookout
- Hot Spot - Spot Fire
- Mobile Weather Unit
- Repeater
- Water Source
- Completed Dozer Line
- Completed Fuel Break
- Completed Hand Line
- Completed Mixed Construction Line
- Completed Road as Line
- Planned Dozer Line
- Planned Hand Line
- Planned Road as Line
- Fire Edge
- Contained Line
- Wildfire Daily Fire Perimeter
- Forest Repeater
- Mountain Peak
- Primary
- Alternate
- Trail
- Local Road
- 4WD
- Basic Custodial Care: 1 (CLOSED)
- High Clearance Vehicles: 2
- Passenger Cars: 3, 4, 5
- Transmission Line
- USFS Admin Boundary
- Wilderness
- Recent Timber Sales
- Historic Fire Perimeter
- US Forest Service (USFS)

NR Team 4
9/13/2021 2100
Acres from IR
North American 1983 Datum, Laidlaw Grid

0.25 0.5 1.5 Miles

