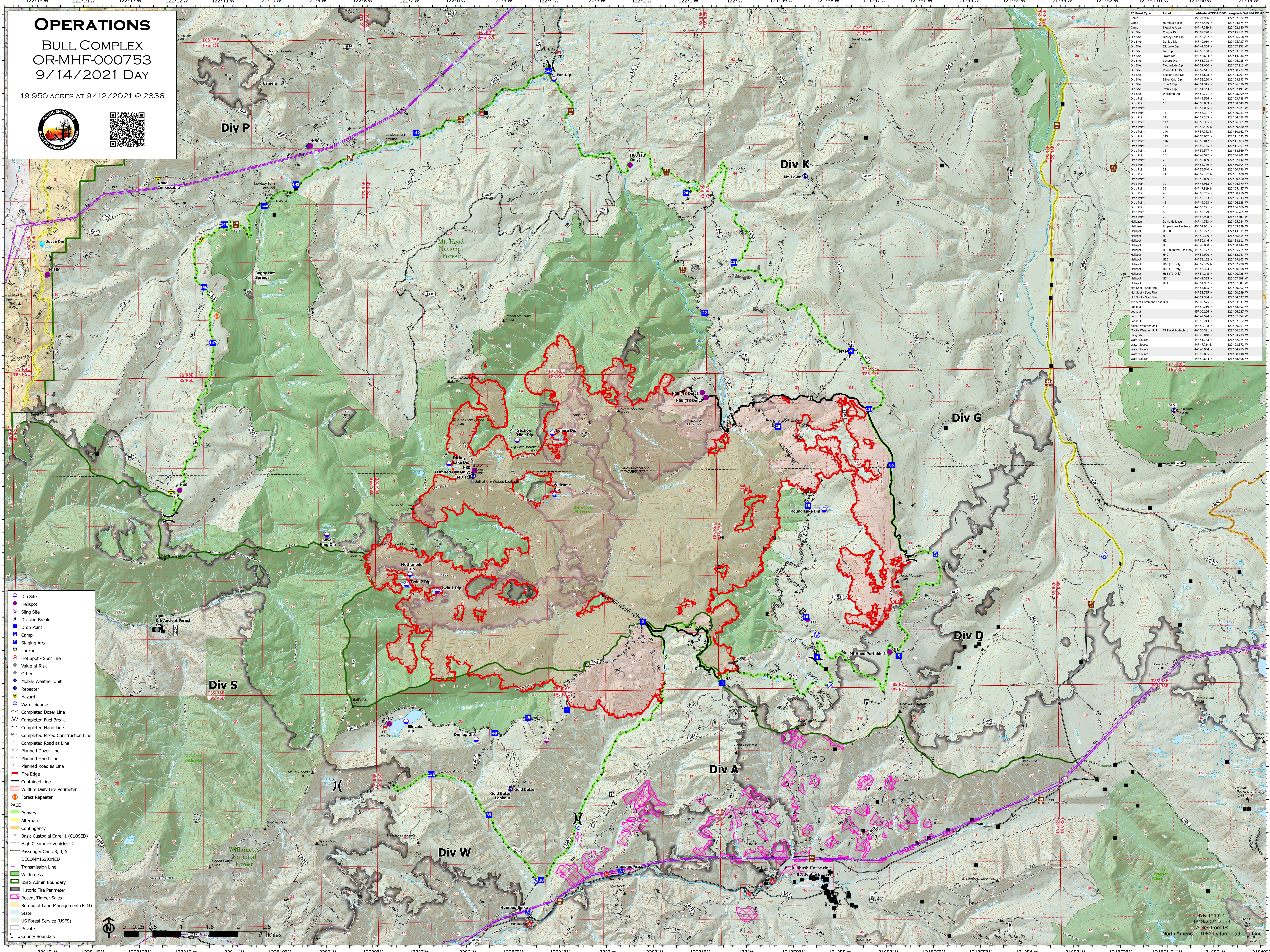


OPERATIONS

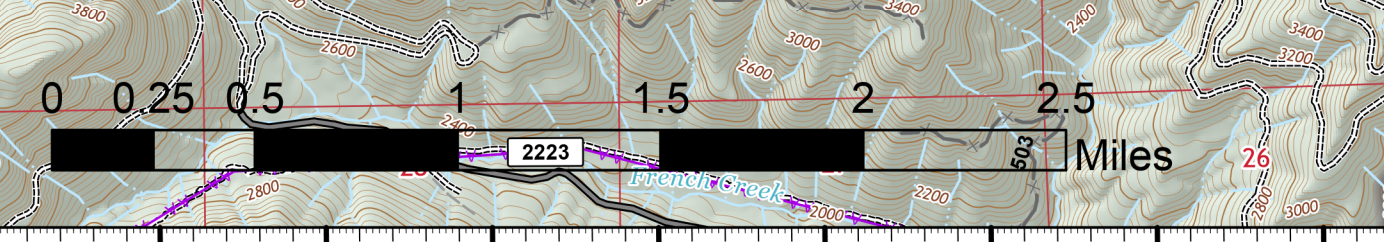
BULL COMPLEX OR-MHF-000753 9/14/2021 DAY

19,950 ACRES AT 9/12/2021 @ 2336



PC Point Type	Label	Latitude WGS84 DOM	Longitude WGS84 DOM
Camp	Humburg Spike	44° 46.430' N	122° 04.234' W
Staging Area	Staging Area	44° 52.280' N	122° 02.280' W
Dip Site	Cooper Dip	44° 02.280' N	122° 15.911' W
Dip Site	Dickey Lake Dip	44° 53.280' N	122° 06.258' W
Dip Site	Dunlap Dip	44° 49.889' N	122° 05.717' W
Dip Site	Elk Lake Dip	44° 49.358' N	122° 02.236' W
Dip Site	Fan Dip	44° 59.130' N	122° 03.911' W
Dip Site	Joyce Dip	44° 52.279' N	122° 14.910' W
Dip Site	Lemore Dip	44° 53.728' N	122° 04.635' W
Dip Site	Motherlode Dip	44° 51.600' N	122° 02.118' W
Dip Site	Round Lake Dip	44° 52.511' N	122° 05.212' W
Dip Site	Section Nine Dip	44° 53.628' N	122° 04.791' W
Dip Site	Silver King Dip	44° 52.202' N	122° 08.893' W
Dip Site	Twin 2 Dip	44° 51.444' N	122° 02.193' W
Dip Site	Twin 1 Dip	44° 51.444' N	122° 02.193' W
Dip Site	Welcome Dip	44° 52.791' N	122° 03.999' W
Drop Point	10	44° 50.883' N	122° 02.280' W
Drop Point	11	44° 54.033' N	122° 02.220' W
Drop Point	12	44° 52.280' N	122° 02.280' W
Drop Point	13	44° 52.280' N	122° 02.280' W
Drop Point	14	44° 52.280' N	122° 02.280' W
Drop Point	15	44° 52.280' N	122° 02.280' W
Drop Point	16	44° 52.280' N	122° 02.280' W
Drop Point	17	44° 52.280' N	122° 02.280' W
Drop Point	18	44° 52.280' N	122° 02.280' W
Drop Point	19	44° 52.280' N	122° 02.280' W
Drop Point	20	44° 52.280' N	122° 02.280' W
Drop Point	21	44° 52.280' N	122° 02.280' W
Drop Point	22	44° 52.280' N	122° 02.280' W
Drop Point	23	44° 52.280' N	122° 02.280' W
Drop Point	24	44° 52.280' N	122° 02.280' W
Drop Point	25	44° 52.280' N	122° 02.280' W
Drop Point	26	44° 52.280' N	122° 02.280' W
Drop Point	27	44° 52.280' N	122° 02.280' W
Drop Point	28	44° 52.280' N	122° 02.280' W
Drop Point	29	44° 52.280' N	122° 02.280' W
Drop Point	30	44° 52.280' N	122° 02.280' W
Drop Point	31	44° 52.280' N	122° 02.280' W
Drop Point	32	44° 52.280' N	122° 02.280' W
Drop Point	33	44° 52.280' N	122° 02.280' W
Drop Point	34	44° 52.280' N	122° 02.280' W
Drop Point	35	44° 52.280' N	122° 02.280' W
Drop Point	36	44° 52.280' N	122° 02.280' W
Drop Point	37	44° 52.280' N	122° 02.280' W
Drop Point	38	44° 52.280' N	122° 02.280' W
Drop Point	39	44° 52.280' N	122° 02.280' W
Drop Point	40	44° 52.280' N	122° 02.280' W
Drop Point	41	44° 52.280' N	122° 02.280' W
Drop Point	42	44° 52.280' N	122° 02.280' W
Drop Point	43	44° 52.280' N	122° 02.280' W
Drop Point	44	44° 52.280' N	122° 02.280' W
Drop Point	45	44° 52.280' N	122° 02.280' W
Drop Point	46	44° 52.280' N	122° 02.280' W
Drop Point	47	44° 52.280' N	122° 02.280' W
Drop Point	48	44° 52.280' N	122° 02.280' W
Drop Point	49	44° 52.280' N	122° 02.280' W
Drop Point	50	44° 52.280' N	122° 02.280' W
Drop Point	51	44° 52.280' N	122° 02.280' W
Drop Point	52	44° 52.280' N	122° 02.280' W
Drop Point	53	44° 52.280' N	122° 02.280' W
Drop Point	54	44° 52.280' N	122° 02.280' W
Drop Point	55	44° 52.280' N	122° 02.280' W
Drop Point	56	44° 52.280' N	122° 02.280' W
Drop Point	57	44° 52.280' N	122° 02.280' W
Drop Point	58	44° 52.280' N	122° 02.280' W
Drop Point	59	44° 52.280' N	122° 02.280' W
Drop Point	60	44° 52.280' N	122° 02.280' W
Drop Point	61	44° 52.280' N	122° 02.280' W
Drop Point	62	44° 52.280' N	122° 02.280' W
Drop Point	63	44° 52.280' N	122° 02.280' W
Drop Point	64	44° 52.280' N	122° 02.280' W
Drop Point	65	44° 52.280' N	122° 02.280' W
Drop Point	66	44° 52.280' N	122° 02.280' W
Drop Point	67	44° 52.280' N	122° 02.280' W
Drop Point	68	44° 52.280' N	122° 02.280' W
Drop Point	69	44° 52.280' N	122° 02.280' W
Drop Point	70	44° 52.280' N	122° 02.280' W
Drop Point	71	44° 52.280' N	122° 02.280' W
Drop Point	72	44° 52.280' N	122° 02.280' W
Drop Point	73	44° 52.280' N	122° 02.280' W
Drop Point	74	44° 52.280' N	122° 02.280' W
Drop Point	75	44° 52.280' N	122° 02.280' W
Drop Point	76	44° 52.280' N	122° 02.280' W
Drop Point	77	44° 52.280' N	122° 02.280' W
Drop Point	78	44° 52.280' N	122° 02.280' W
Drop Point	79	44° 52.280' N	122° 02.280' W
Drop Point	80	44° 52.280' N	122° 02.280' W
Drop Point	81	44° 52.280' N	122° 02.280' W
Drop Point	82	44° 52.280' N	122° 02.280' W
Drop Point	83	44° 52.280' N	122° 02.280' W
Drop Point	84	44° 52.280' N	122° 02.280' W
Drop Point	85	44° 52.280' N	122° 02.280' W
Drop Point	86	44° 52.280' N	122° 02.280' W
Drop Point	87	44° 52.280' N	122° 02.280' W
Drop Point	88	44° 52.280' N	122° 02.280' W
Drop Point	89	44° 52.280' N	122° 02.280' W
Drop Point	90	44° 52.280' N	122° 02.280' W
Drop Point	91	44° 52.280' N	122° 02.280' W
Drop Point	92	44° 52.280' N	122° 02.280' W
Drop Point	93	44° 52.280' N	122° 02.280' W
Drop Point	94	44° 52.280' N	122° 02.280' W
Drop Point	95	44° 52.280' N	122° 02.280' W
Drop Point	96	44° 52.280' N	122° 02.280' W
Drop Point	97	44° 52.280' N	122° 02.280' W
Drop Point	98	44° 52.280' N	122° 02.280' W
Drop Point	99	44° 52.280' N	122° 02.280' W
Drop Point	100	44° 52.280' N	122° 02.280' W

- Dip Site
- Helispot
- Sling Site
- Division Break
- Drop Point
- Camp
- Staging Area
- Lookout
- Hot Spot - Spot Fire
- Value at Risk
- Other
- Mobile Weather Unit
- Repeater
- Hazard
- Water Source
- Completed Dozer Line
- Completed Fuel Break
- Completed Hand Line
- Completed Mixed Construction Line
- Completed Road as Line
- Planned Dozer Line
- Planned Hand Line
- Planned Road as Line
- Fire Edge
- Contained Line
- Wildfire Daily Fire Perimeter
- Forest Repeater
- PACE
- Primary
- Alternate
- Contingency
- Basic Custodial Care: 1 (CLOSED)
- High Clearance Vehicles: 2
- Passenger Cars: 3, 4, 5
- DECOMMISSIONED
- Transmission Line
- Wilderness
- USFS Admin Boundary
- Historic Fire Perimeter
- Recent Timber Sales
- Bureau of Land Management (BLM)
- State
- US Forest Service (USFS)
- Private
- County Boundary



NR Team 4
9/13/2021 2053
Acres from IR
North American 1983 Datum, LatLong Grid