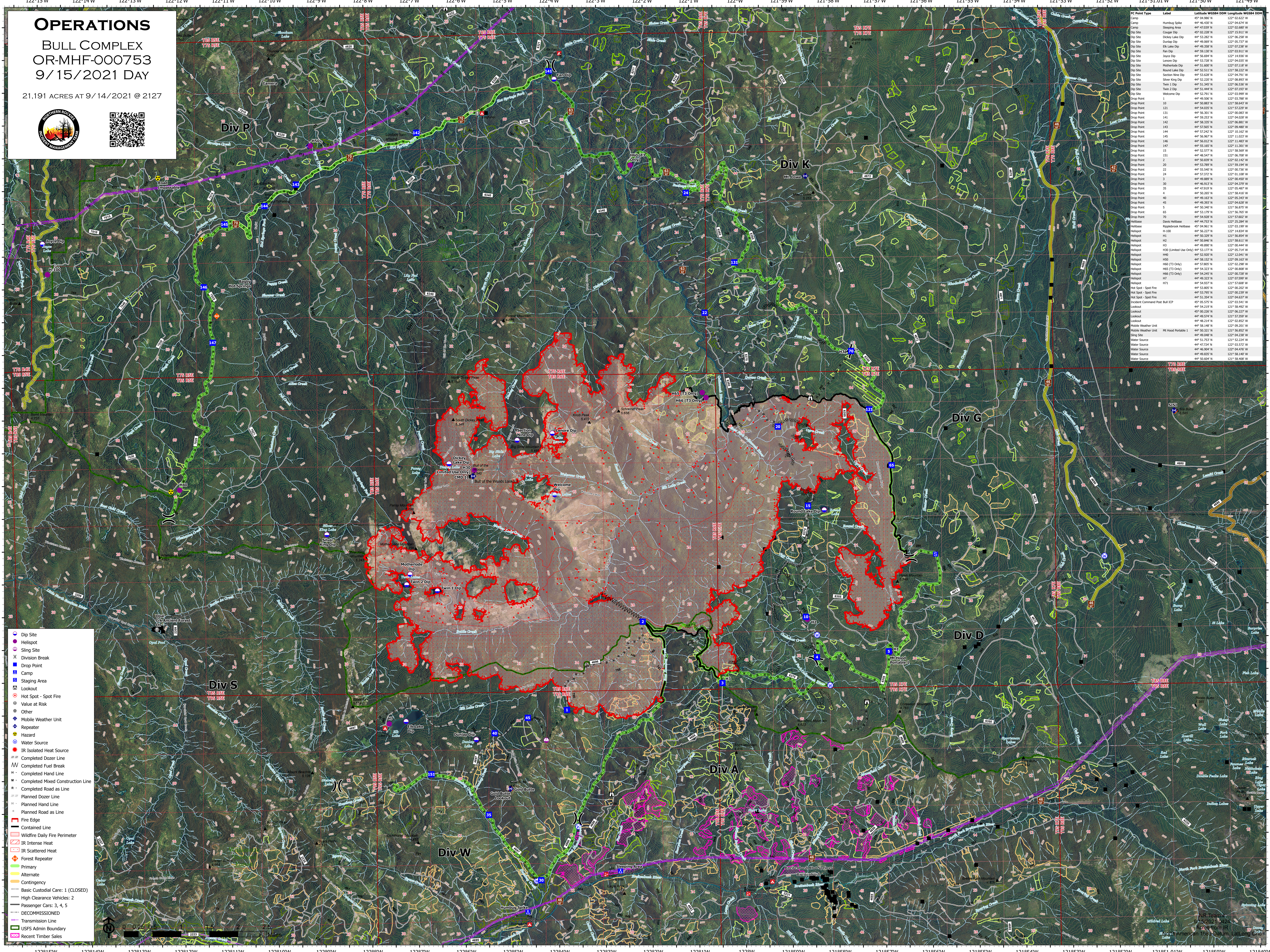


OPERATIONS

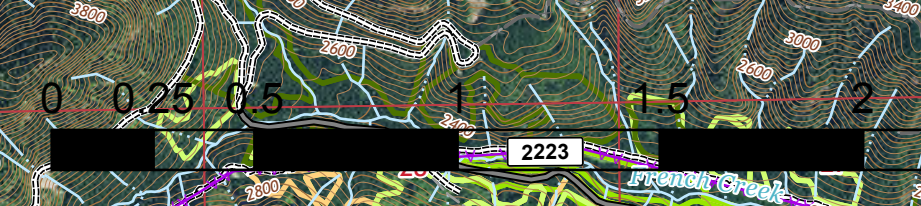
BULL COMPLEX
OR-MHF-000753
9/15/2021 DAY

21,191 ACRES AT 9/14/2021 @ 2127



| FC Point Type | Label | Latitude WGS84 DOM | Longitude WGS84 DOM |
|----------------------|--------------------------------|--------------------|---------------------|
| Camp | Humburg Spike | 44° 46.430' N | 122° 04.624' W |
| Camp | Staging Area | 44° 53.289' N | 122° 09.607' W |
| Camp | Cooper Dip | 45° 02.228' N | 122° 15.911' W |
| Dip Site | Dickey Lake Dip | 44° 53.282' N | 122° 06.258' W |
| Dip Site | Dunlap Dip | 44° 49.889' N | 122° 05.577' W |
| Dip Site | Elk Lake Dip | 44° 49.398' N | 122° 07.236' W |
| Dip Site | Fan Dip | 44° 59.130' N | 122° 03.911' W |
| Dip Site | Jones Dip | 44° 56.096' N | 122° 14.807' W |
| Dip Site | Lenore Dip | 44° 53.728' N | 122° 04.635' W |
| Dip Site | Motherlode Dip | 44° 51.600' N | 122° 07.118' W |
| Dip Site | Round Lake Dip | 44° 52.511' N | 122° 11.822' W |
| Dip Site | Section Nine Dip | 44° 53.628' N | 122° 04.791' W |
| Dip Site | Silver King Dip | 44° 52.220' N | 122° 08.893' W |
| Dip Site | Twin 1 Dip | 44° 51.940' N | 122° 09.208' W |
| Dip Site | Twin 2 Dip | 44° 51.444' N | 122° 07.193' W |
| Dip Site | Welcome Dip | 44° 52.791' N | 122° 03.999' W |
| Drop Point | 10 | 44° 50.883' N | 121° 58.643' W |
| Drop Point | 121 | 44° 54.035' N | 121° 57.229' W |
| Drop Point | 131 | 44° 56.201' N | 122° 08.918' W |
| Drop Point | 141 | 44° 59.253' N | 122° 04.628' W |
| Drop Point | 142 | 44° 58.303' N | 122° 06.881' W |
| Drop Point | 143 | 44° 57.242' N | 122° 10.162' W |
| Drop Point | 144 | 44° 57.242' N | 122° 10.162' W |
| Drop Point | 145 | 44° 56.967' N | 122° 11.023' W |
| Drop Point | 146 | 44° 55.577' N | 122° 11.807' W |
| Drop Point | 147 | 44° 55.185' N | 122° 11.301' W |
| Drop Point | 15 | 44° 52.577' N | 122° 10.509' W |
| Drop Point | 151 | 44° 48.547' N | 122° 06.508' W |
| Drop Point | 2 | 44° 50.839' N | 122° 03.142' W |
| Drop Point | 24 | 44° 57.372' N | 122° 01.108' W |
| Drop Point | 25 | 44° 56.889' N | 122° 01.487' W |
| Drop Point | 26 | 44° 55.940' N | 122° 00.730' W |
| Drop Point | 27 | 44° 57.372' N | 122° 01.108' W |
| Drop Point | 30 | 44° 46.913' N | 122° 04.379' W |
| Drop Point | 35 | 44° 47.919' N | 122° 05.467' W |
| Drop Point | 4 | 44° 50.205' N | 121° 58.616' W |
| Drop Point | 40 | 44° 49.163' N | 122° 05.343' W |
| Drop Point | 45 | 44° 49.393' N | 122° 04.628' W |
| Drop Point | 5 | 44° 50.205' N | 121° 58.616' W |
| Drop Point | 65 | 44° 53.179' N | 121° 56.765' W |
| Drop Point | 70 | 44° 54.528' N | 121° 57.602' W |
| Helibase | Davis Helibase | 44° 46.723' N | 122° 02.587' W |
| Helibase | Rippledock Helibase | 45° 04.961' N | 122° 03.199' W |
| Helipod | H-100 | 44° 56.227' N | 122° 14.634' W |
| Helipod | H1 | 44° 50.232' N | 121° 58.616' W |
| Helipod | H2 | 44° 50.846' N | 121° 58.611' W |
| Helipod | H3 (Limited Use Only) | 44° 53.177' N | 122° 05.214' W |
| Helipod | H4 | 44° 49.990' N | 122° 08.448' W |
| Helipod | H5 | 44° 52.920' N | 122° 12.041' W |
| Helipod | H55 | 44° 58.152' N | 122° 09.383' W |
| Helipod | H56 (T3 Only) | 44° 57.802' N | 122° 02.208' W |
| Helipod | H56 (T3 Only) | 44° 54.323' N | 122° 00.808' W |
| Helipod | H56 (T3 Only) | 44° 54.285' N | 122° 00.708' W |
| Helipod | H7 | 44° 49.323' N | 122° 05.599' W |
| Helipod | H7L | 44° 54.937' N | 121° 57.608' W |
| Hot Spot - Spot Fire | Hot Spot - Spot Fire | 44° 53.895' N | 122° 00.207' W |
| Hot Spot - Spot Fire | Hot Spot - Spot Fire | 44° 53.795' N | 122° 00.239' W |
| Hot Spot - Spot Fire | Hot Spot - Spot Fire | 44° 51.354' N | 122° 04.637' W |
| Lookout | Lookout Command Post, Bull ICP | 45° 05.278' N | 122° 03.041' W |
| Lookout | Lookout | 44° 54.219' N | 121° 58.492' W |
| Lookout | Lookout | 45° 00.220' N | 122° 06.227' W |
| Lookout | Lookout | 44° 49.218' N | 121° 57.208' W |
| Lookout | Lookout | 44° 48.214' N | 122° 02.452' W |
| Mobile Weather Unit | Mobile Weather Unit | 44° 58.149' N | 122° 09.201' W |
| Mobile Weather Unit | Mobile Weather Unit | 44° 50.232' N | 121° 58.616' W |
| Slip Site | Slip Site | 44° 49.048' N | 122° 04.238' W |
| Water Source | Water Source | 44° 51.723' N | 121° 52.224' W |
| Water Source | Water Source | 44° 47.214' N | 122° 03.512' W |
| Water Source | Water Source | 44° 46.904' N | 122° 04.476' W |
| Water Source | Water Source | 44° 49.033' N | 121° 58.140' W |
| Water Source | Water Source | 44° 50.604' N | 121° 58.208' W |

- Dip Site
- Helipod
- Slip Site
- Division Break
- Drop Point
- Camp
- Staging Area
- Lookout
- Hot Spot - Spot Fire
- Value at Risk
- Other
- Mobile Weather Unit
- Repeater
- Hazard
- Water Source
- IR Isolated Heat Source
- Completed Dozer Line
- Completed Fuel Break
- Completed Hand Line
- Completed Mixed Construction Line
- Completed Road as Line
- Planned Dozer Line
- Planned Hand Line
- Planned Road as Line
- Fire Edge
- Contained Line
- Wildfire Daily Fire Perimeter
- IR Intense Heat
- IR Scattered Heat
- Forest Repeater
- Primary
- Alternate
- Contingency
- Basic Custodial Care: 1 (CLOSED)
- High Clearance Vehicles: 2
- Passenger Cars: 3, 4, 5
- DECOMMISSIONED
- Transmission Line
- USFS Admin Boundary
- Recent Timber Sales



NR Team 1
9/15/2021 0424
Acres from IR
North American 1983 Datum, Lat/Long Grid