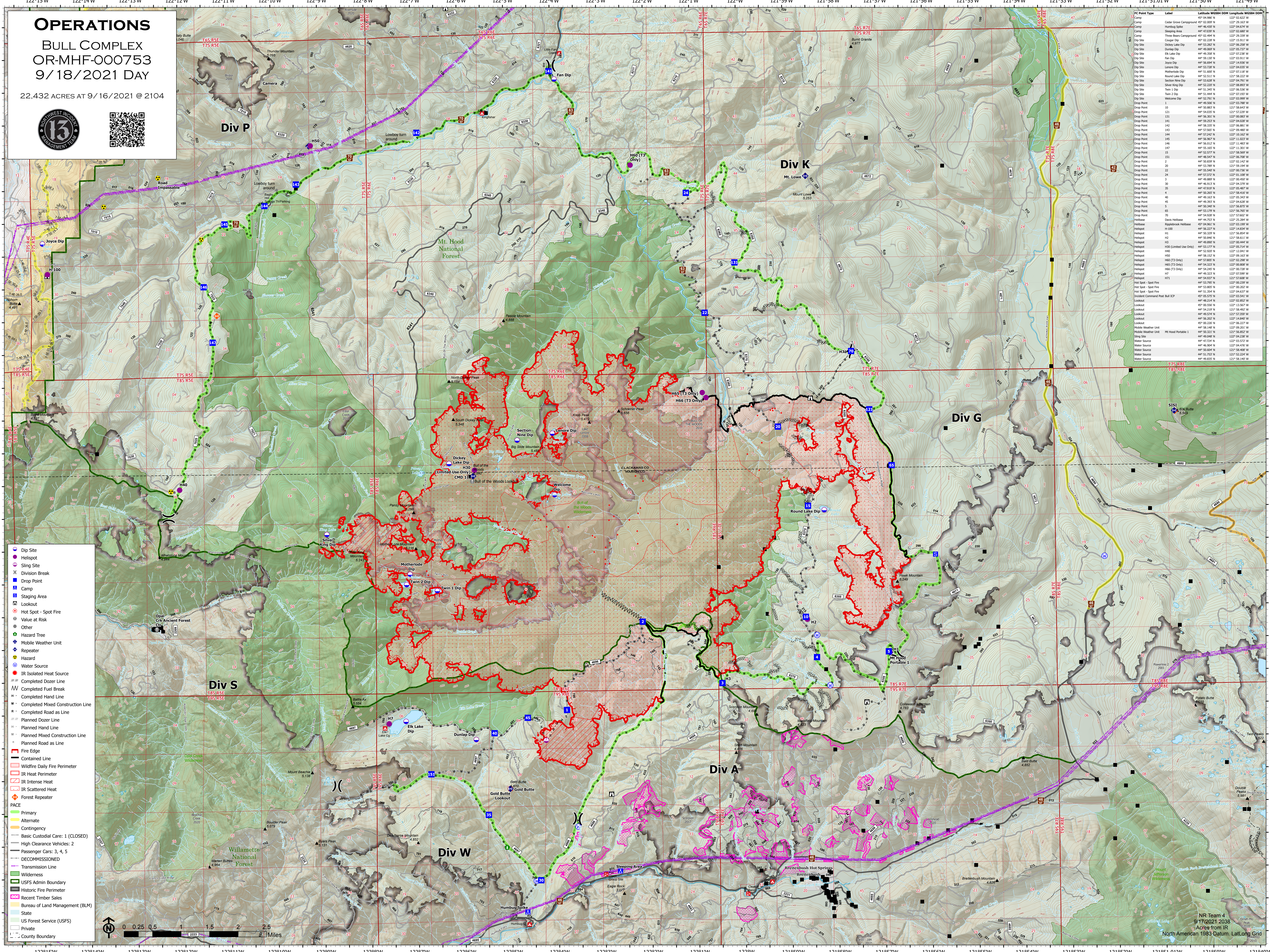


# OPERATIONS

## BULL COMPLEX OR-MHF-000753 9/18/2021 DAY

22,432 ACRES AT 9/16/2021 @ 2104



| IC Point Type                  | Label                  | Latitude WGS84 | DOH            | Longitude WGS84 | DOH |
|--------------------------------|------------------------|----------------|----------------|-----------------|-----|
| Camp                           | Cedar Grove Campground | 43° 52.000' N  | 122° 29.163' W |                 |     |
| Camp                           | Hunting Station        | 44° 46.039' N  | 122° 02.607' W |                 |     |
| Camp                           | Slawing Area           | 44° 47.039' N  | 122° 02.607' W |                 |     |
| Camp                           | Three Bars Campground  | 43° 52.494' N  | 122° 29.139' W |                 |     |
| Dip Site                       | Cassiar Dip            | 43° 53.382' N  | 122° 05.237' W |                 |     |
| Dip Site                       | Diskey Lake Dip        | 44° 49.069' N  | 122° 05.237' W |                 |     |
| Dip Site                       | Elk Lake Dip           | 44° 49.300' N  | 122° 07.236' W |                 |     |
| Dip Site                       | Fan Dip                | 44° 50.130' N  | 122° 03.911' W |                 |     |
| Dip Site                       | Joyce Dip              | 44° 50.849' N  | 122° 14.936' W |                 |     |
| Dip Site                       | Lenore Dip             | 44° 53.728' N  | 122° 04.035' W |                 |     |
| Dip Site                       | Motherlode Dip         | 44° 51.000' N  | 122° 02.118' W |                 |     |
| Dip Site                       | Round Lake Dip         | 44° 53.321' N  | 122° 02.227' W |                 |     |
| Dip Site                       | Section Nine Dip       | 44° 53.628' N  | 122° 04.791' W |                 |     |
| Dip Site                       | Silver King Dip        | 44° 52.228' N  | 122° 06.892' W |                 |     |
| Dip Site                       | Twin 1 Dip             | 44° 51.345' N  | 122° 06.136' W |                 |     |
| Dip Site                       | Twin 2 Dip             | 44° 51.444' N  | 122° 07.137' W |                 |     |
| Dip Site                       | Wellstone Dip          | 44° 52.748' N  | 122° 03.999' W |                 |     |
| Drop Point                     | 1                      | 44° 49.500' N  | 122° 03.788' W |                 |     |
| Drop Point                     | 10                     | 44° 50.887' N  | 122° 18.847' W |                 |     |
| Drop Point                     | 121                    | 44° 54.029' N  | 122° 02.227' W |                 |     |
| Drop Point                     | 131                    | 44° 56.301' N  | 122° 06.083' W |                 |     |
| Drop Point                     | 141                    | 44° 56.223' N  | 122° 04.035' W |                 |     |
| Drop Point                     | 142                    | 44° 58.337' N  | 122° 06.881' W |                 |     |
| Drop Point                     | 143                    | 44° 57.565' N  | 122° 09.487' W |                 |     |
| Drop Point                     | 144                    | 44° 52.242' N  | 122° 03.999' W |                 |     |
| Drop Point                     | 145                    | 44° 56.967' N  | 122° 11.023' W |                 |     |
| Drop Point                     | 146                    | 44° 56.012' N  | 122° 11.403' W |                 |     |
| Drop Point                     | 147                    | 44° 55.165' N  | 122° 11.301' W |                 |     |
| Drop Point                     | 15                     | 44° 52.577' N  | 122° 18.569' W |                 |     |
| Drop Point                     | 151                    | 44° 56.949' N  | 122° 06.700' W |                 |     |
| Drop Point                     | 2                      | 44° 50.839' N  | 122° 02.142' W |                 |     |
| Drop Point                     | 20                     | 44° 53.799' N  | 122° 18.847' W |                 |     |
| Drop Point                     | 24                     | 44° 53.372' N  | 122° 01.108' W |                 |     |
| Drop Point                     | 28                     | 44° 49.300' N  | 122° 05.816' W |                 |     |
| Drop Point                     | 30                     | 44° 46.913' N  | 122° 04.379' W |                 |     |
| Drop Point                     | 35                     | 44° 47.939' N  | 122° 05.467' W |                 |     |
| Drop Point                     | 4                      | 44° 50.202' N  | 122° 02.607' W |                 |     |
| Drop Point                     | 5                      | 44° 56.346' N  | 122° 06.892' W |                 |     |
| Drop Point                     | 65                     | 44° 53.379' N  | 122° 18.569' W |                 |     |
| Drop Point                     | 70                     | 44° 56.608' N  | 122° 13.602' W |                 |     |
| Habitat                        | Davis Hellbore         | 44° 44.752' N  | 122° 25.284' W |                 |     |
| Habitat                        | Registook Hellbore     | 44° 54.962' N  | 122° 03.199' W |                 |     |
| Habitat                        | H-100                  | 44° 50.202' N  | 122° 14.890' W |                 |     |
| Habitat                        | H1                     | 44° 50.329' N  | 122° 16.854' W |                 |     |
| Habitat                        | H2                     | 44° 50.846' N  | 122° 08.611' W |                 |     |
| Habitat                        | H3                     | 44° 49.869' N  | 122° 08.444' W |                 |     |
| Habitat                        | H30 (Limited Use Only) | 44° 53.177' N  | 122° 05.714' W |                 |     |
| Habitat                        | H31                    | 44° 53.300' N  | 122° 12.041' W |                 |     |
| Habitat                        | H50                    | 44° 56.152' N  | 122° 09.163' W |                 |     |
| Habitat                        | H60 (T3 Only)          | 44° 53.809' N  | 122° 02.269' W |                 |     |
| Habitat                        | H61 (T3 Only)          | 44° 54.321' N  | 122° 09.800' W |                 |     |
| Habitat                        | H66 (T3 Only)          | 44° 54.247' N  | 122° 09.718' W |                 |     |
| Habitat                        | H7                     | 44° 50.212' N  | 122° 07.599' W |                 |     |
| Habitat                        | H71                    | 44° 54.937' N  | 122° 17.696' W |                 |     |
| Hot Spot - Spot Fire           |                        | 44° 53.799' N  | 122° 09.239' W |                 |     |
| Hot Spot - Spot Fire           |                        | 44° 51.843' N  | 122° 01.202' W |                 |     |
| Hot Spot - Spot Fire           |                        | 44° 51.354' N  | 122° 04.617' W |                 |     |
| Incident Command Post Bull ICP |                        | 44° 53.579' N  | 122° 03.541' W |                 |     |
| Lookout                        |                        | 44° 54.247' N  | 122° 13.567' W |                 |     |
| Lookout                        |                        | 44° 54.219' N  | 122° 18.402' W |                 |     |
| Lookout                        |                        | 44° 49.574' N  | 122° 17.339' W |                 |     |
| Lookout                        |                        | 44° 50.202' N  | 122° 14.890' W |                 |     |
| Mobile Weather Unit            |                        | 44° 50.202' N  | 122° 06.227' W |                 |     |
| Mobile Weather Unit            | MR Hood Portable 1     | 44° 58.148' N  | 122° 09.201' W |                 |     |
| Mobile Weather Unit            |                        | 44° 50.202' N  | 122° 18.855' W |                 |     |
| Slip Site                      |                        | 44° 49.048' N  | 122° 04.238' W |                 |     |
| Water Source                   |                        | 44° 47.724' N  | 122° 03.572' W |                 |     |
| Water Source                   |                        | 44° 46.808' N  | 122° 04.426' W |                 |     |
| Water Source                   |                        | 44° 50.604' N  | 122° 18.408' W |                 |     |
| Water Source                   |                        | 44° 51.752' N  | 122° 18.224' W |                 |     |
| Water Source                   |                        | 44° 48.835' N  | 122° 16.140' W |                 |     |

- Dip Site
- Helispot
- Sling Site
- Division Break
- Drop Point
- Camp
- Staging Area
- Lookout
- Hot Spot - Spot Fire
- Value at Risk
- Other
- Hazard Tree
- Mobile Weather Unit
- Repeater
- Water Source
- IR Isolated Heat Source
- Completed Dozer Line
- Completed Fuel Break
- Completed Hand Line
- Completed Mixed Construction Line
- Completed Road as Line
- Planned Dozer Line
- Planned Hand Line
- Planned Mixed Construction Line
- Planned Road as Line
- Fire Edge
- Contained Line
- Wildfire Daily Fire Perimeter
- IR Heat Perimeter
- IR Intense Heat
- IR Scattered Heat
- Forest Repeater
- PACE
- Primary
- Alternate
- Contingency
- Basic Custodial Care: 1 (CLOSED)
- High Clearance Vehicles: 2
- Passenger Cars: 3, 4, 5
- DECOMMISSIONED
- Transmission Line
- Wilderness
- USFS Admin Boundary
- Historic Fire Perimeter
- Recent Timber Sales
- Bureau of Land Management (BLM)
- State
- US Forest Service (USFS)
- Private
- County Boundary



NR Team 4  
9/17/2021 2038  
Acres from IR  
North American 1983 Datum, Lat/Long Grid