

122°10'W

122°5'W

122°W

44°50'N

44°50'N

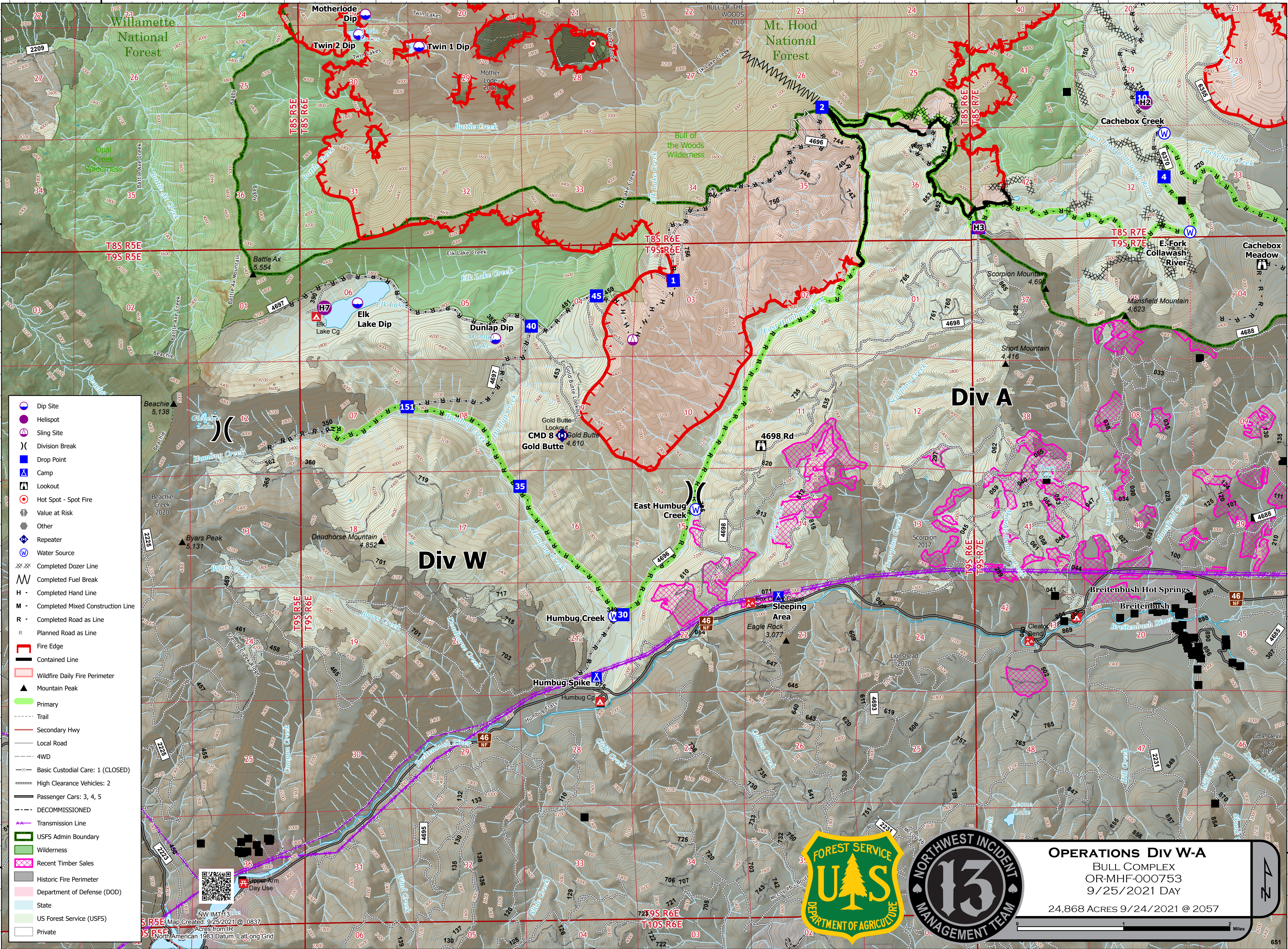
44°45'N

44°45'N

122°10'W

122°5'W

122°W



- Dip Site
- Helispot
- Sling Site
- Division Break
- Drop Point
- Camp
- Lookout
- Hot Spot - Spot Fire
- Value at Risk
- Other
- Repeater
- Water Source
- Completed Dozer Line
- Completed Fuel Break
- Completed Hand Line
- Completed Mixed Construction Line
- Completed Road as Line
- Planned Road as Line
- Fire Edge
- Contained Line
- Wildfire Daily Fire Perimeter
- Mountain Peak
- Primary
- Trail
- Secondary Hwy
- Local Road
- 4WD
- Basic Custodial Care: 1 (CLOSED)
- High Clearance Vehicles: 2
- Passenger Cars: 3, 4, 5
- DECOMMISSIONED
- Transmission Line
- USFS Admin Boundary
- Wilderness
- Recent Timber Sales
- Historic Fire Perimeter
- Department of Defense (DOD)
- State
- US Forest Service (USFS)
- Private

NW IMT 13
 Map Created: 9/25/2021 @ 0837
 Acres from IR
 North American 1983 Datum, Lat/Long Grid



OPERATIONS DIV W-A
 BULL COMPLEX
 OR-MHF-000753
 9/25/2021 DAY
 24,868 ACRES 9/24/2021 @ 2057